

Welcome to the Two Rivers Open House

Please sign in at the front desk and provide your contact information if you would like to receive Project updates.

We invite you to walk around and look at the displays. If you have questions or comments, please ask one of our representatives.

Thank you for attending!



Clearway

Welcome to the Two Rivers Open House

Please sign in at the front desk and provide your contact information if you would like to receive Project updates.

We invite you to walk around and look at the displays. If you have questions or comments, please ask one of our representatives.

Thank you for attending!



Clearway

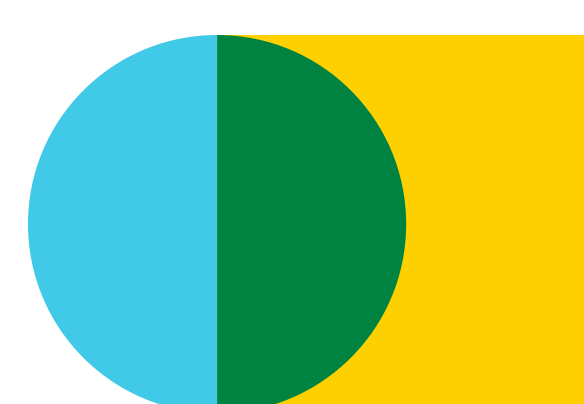
Two Rivers Wind Project

Project Background

Development work has been underway on the Two Rivers Wind Project since 2017.

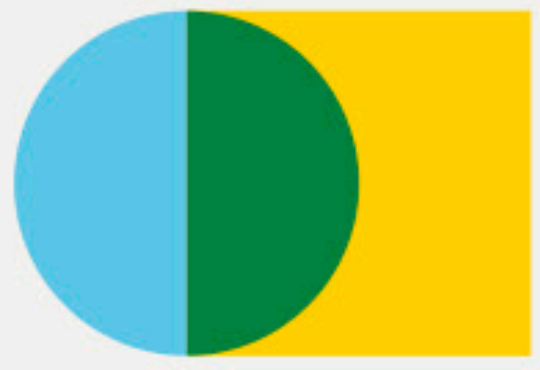
BluEarth Renewables first began outreach efforts in 2018 after acquiring the project. Over the last year, we have conducted pre-construction wildlife surveys that are consistent with the U.S. Fish and Wildlife Service Land-based Wind Energy Guidelines and Wyoming Game & Fish recommendations. We have also been meeting with the Wyoming Game and Fish Department and U.S. Fish and Wildlife Service to determine the level of baseline survey information needed. The Project is currently engaged in a NEPA Environmental Assessment with the U.S. Department of Interior Bureau of Land Management.

The project is a joint venture partnership between BluEarth Renewables US LLC and Clearway Energy Group LLC.



Clearway

The Project is being developed by Two Rivers Wind LLC, a joint venture partnership between BluEarth Renewables US LLC and Clearway Energy Group LLC.



Clearway

Our Vision

Clearway's vision is a world powered by clean energy. Our 800+ employees work every day to make that vision possible – operating solar and wind projects in 26 states and developing new projects across many more. Together with our customers, affiliates, and partners, we are leading the way to a clean energy future at an accelerating pace.

Our Mission

Our Mission is to make clean, competitive, and reliable energy, to do good by our customers, our communities, our environment, and our people, and to be an enduring company that makes these things – and even more – possible.

Stats

10 GW
under Operations
Nationwide

100+
PPA Customers
Nationwide

30 GW
in Development &
Construction

\$15 BN
in Capital Raised for
Project Financings

Our Portfolio



Wind



Energy Storage



Solar



Natural Gas

Who We Are

Clearway is one of the top 5 largest renewable energy companies in the United States. We are creating clean energy jobs, investing in communities where we work and live, and producing domestic, reliable and affordable power.

Our Renewable Portfolio

Clearway's 8 GW of wind, solar, and energy storage assets – one of the largest renewable energy fleets in the country – generates enough electricity to power over 2 million homes.



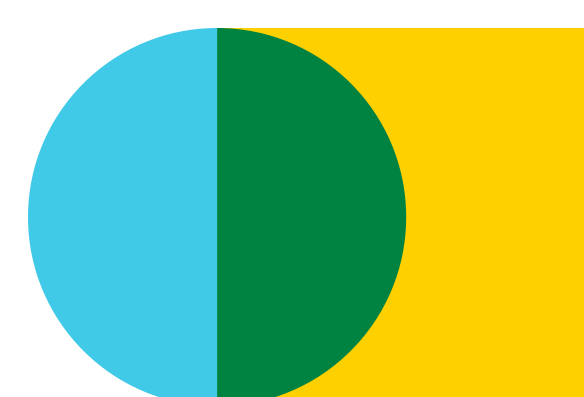
Two Rivers Wind Project

Project Description

We are planning to submit local and state permit applications required to construct and operate the Two Rivers Wind Project across a private ranch in Carbon County, Wyoming. Permits required for the project include a Conditional Use Permit from the County and a Industrial Siting Council (ISC) Permit from the Wyoming Department of Environmental Quality.

Project Details	
Location	North of Highway 30 and Medicine Bow
Point of Interconnection	Freezeout substation
Project Area	Approximately 15,600 acres
Expected Capacity	Up to 280 MW
Preliminary Site Plan	Up to 38 wind turbines on Two Rivers Ranch

*Estimated



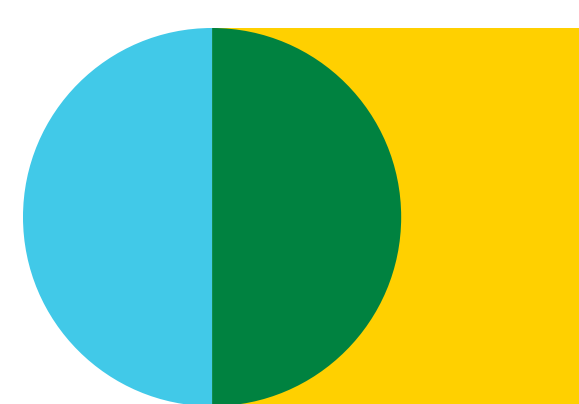
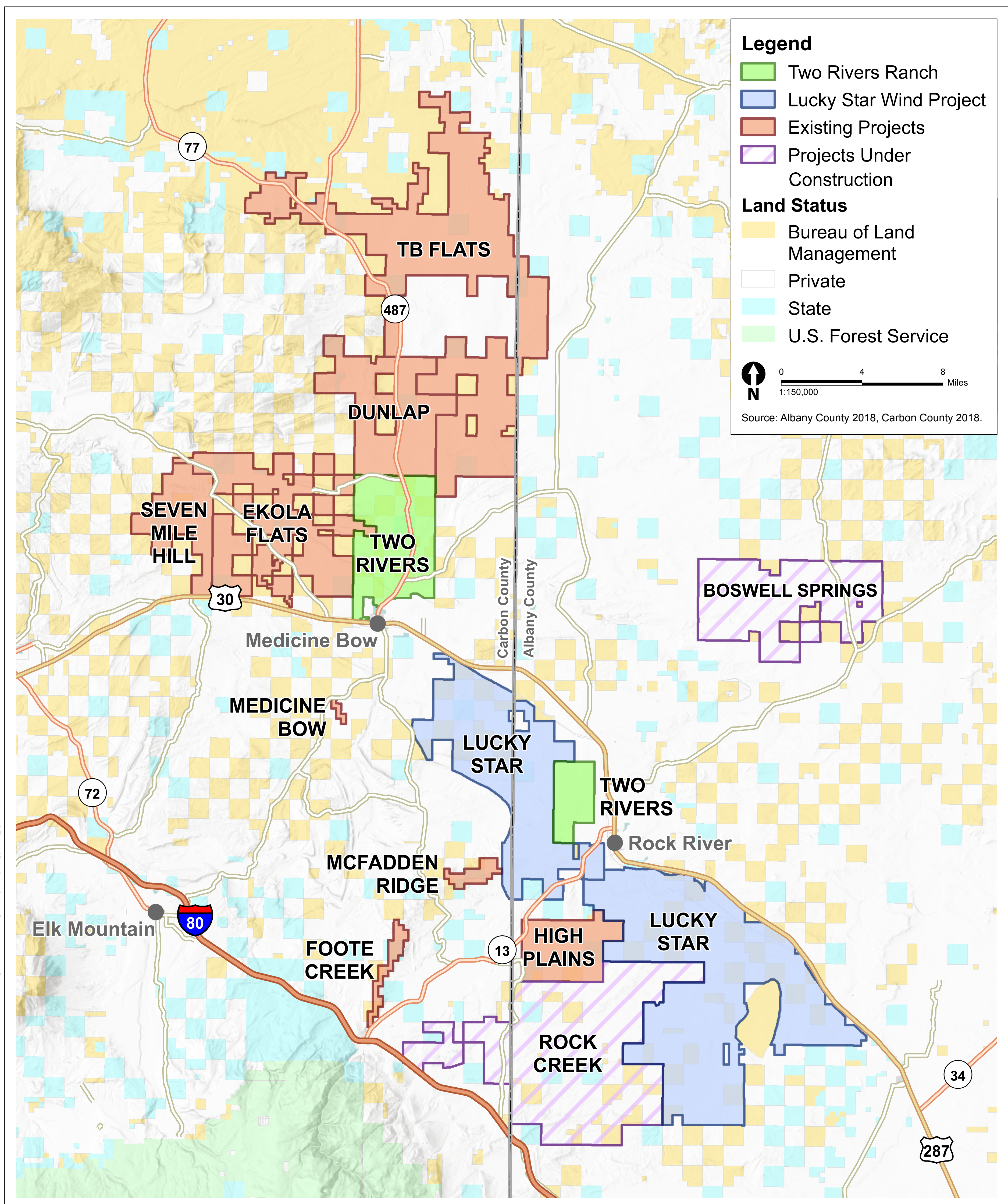
Clearway

The Project is being developed by Two Rivers Wind LLC, a joint venture partnership between BluEarth Renewables US LLC and Clearway Energy Group LLC.

Two Rivers Wind Project

Regional Overview

An overview of existing and proposed wind energy projects in the region.

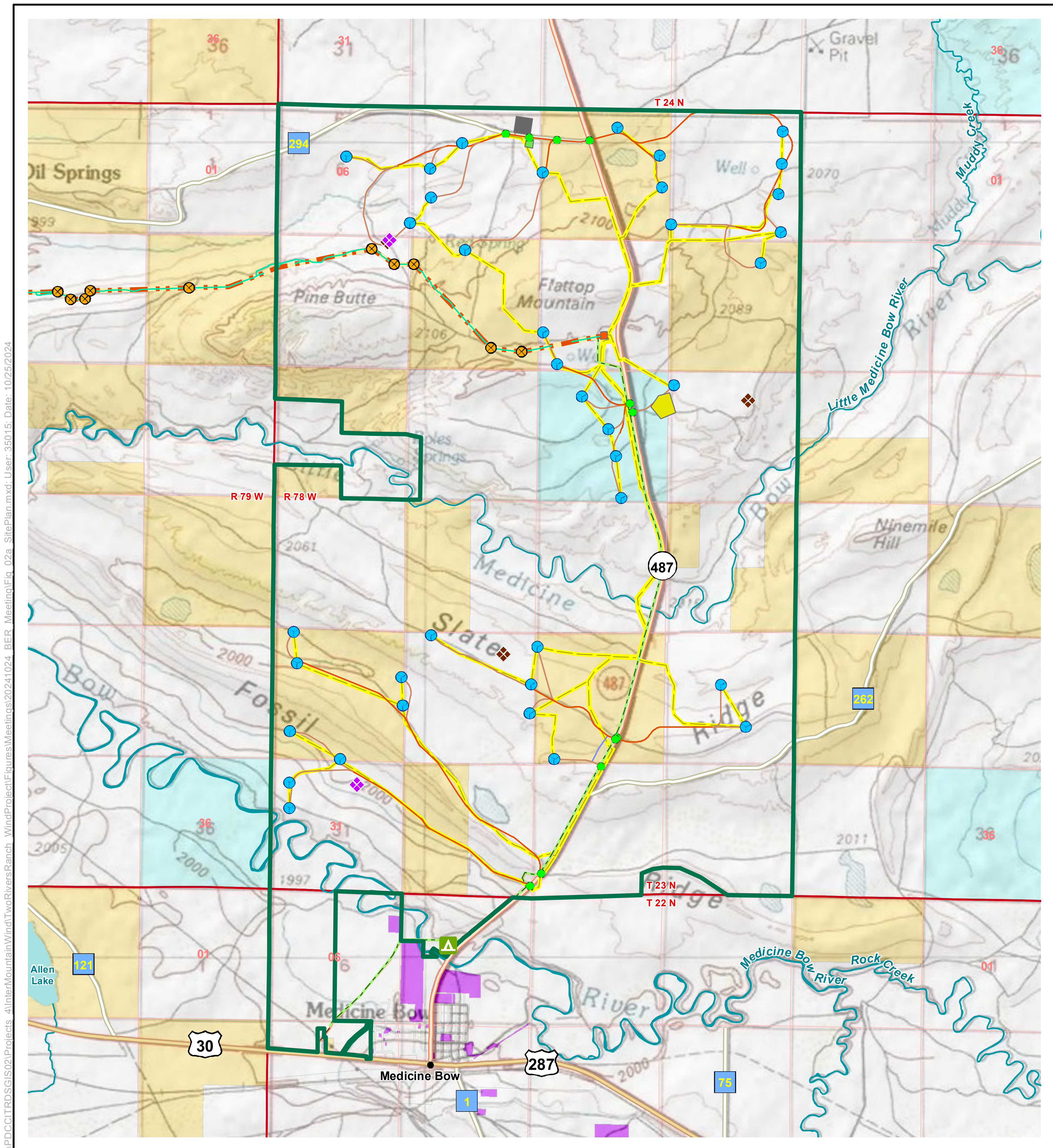


Clearway

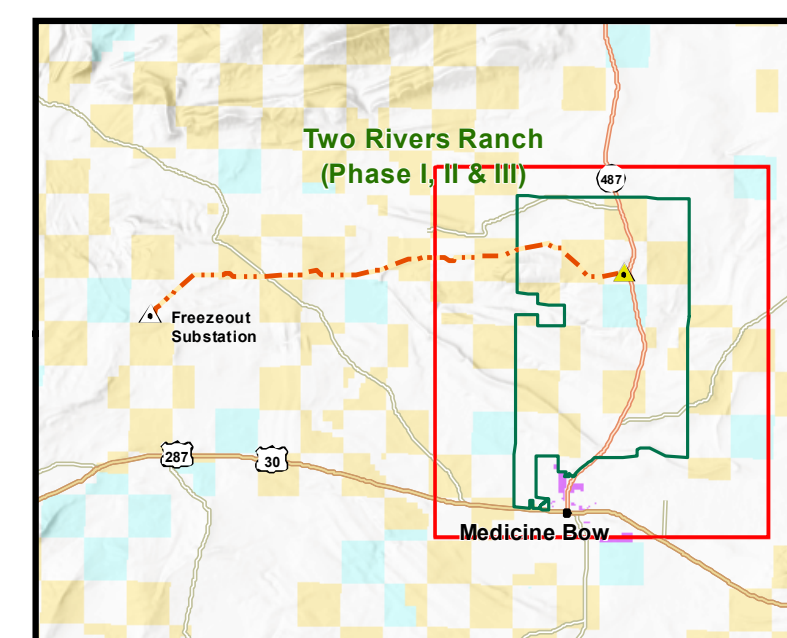
The Project is being developed by Two Rivers Wind LLC, a joint venture partnership between BluEarth Renewables US LLC and Clearway Energy Group LLC.

Two Rivers Wind Project

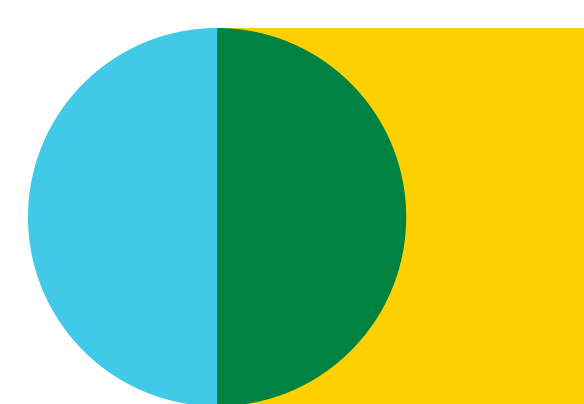
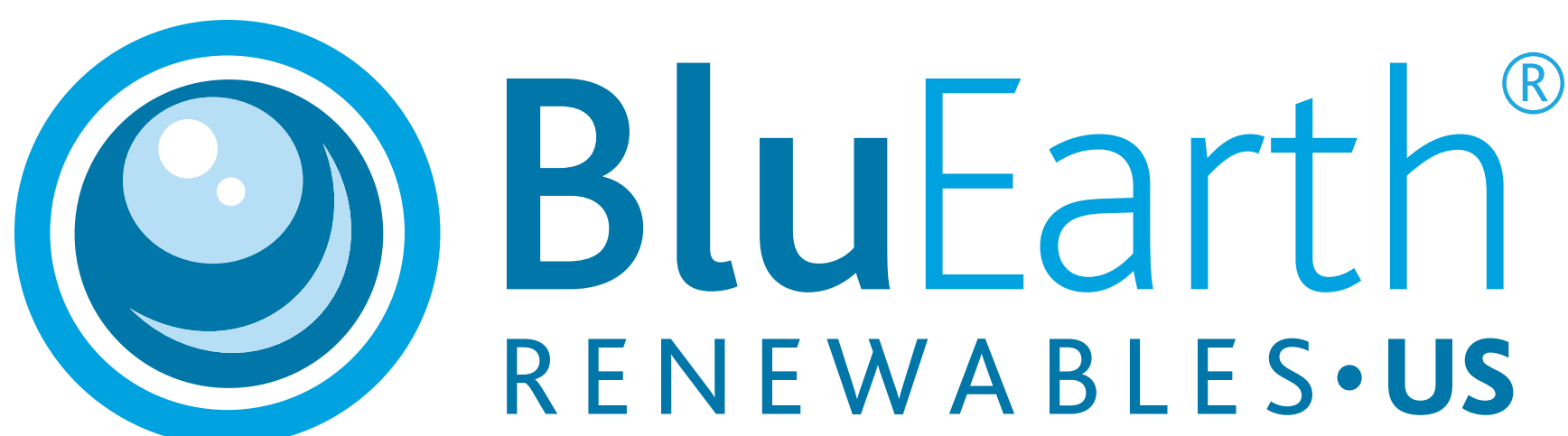
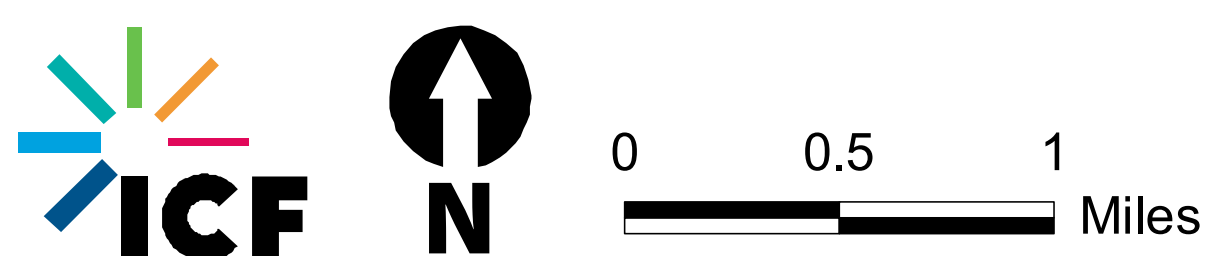
Project Plan



- | | | |
|------------------------------------|----------------------|--|
| Project Boundary | Met Tower (Existing) | Distribution Line |
| Wind Turbine | Met Tower (Proposed) | Fiber Optic Line |
| Two Rivers Substation to Freezeout | Access Point | Access/Arterial Road (Perm) |
| Communication/Collection Line | Worker Camp | Turbine/Facility/Structure Road (Perm) |
| Pulling/Tensioning Site | Construction Yard | Transmission Road (Perm) |
| | O&M Facility | Crane Path (Temp-Overland) |
| | Marshalling Yard | |
| | Substation | |
| | | Land Ownership |
| | | Bureau of Land Management |
| | | Local Government |
| | | Private |
| | | State |



Source: Carbon County 2018.

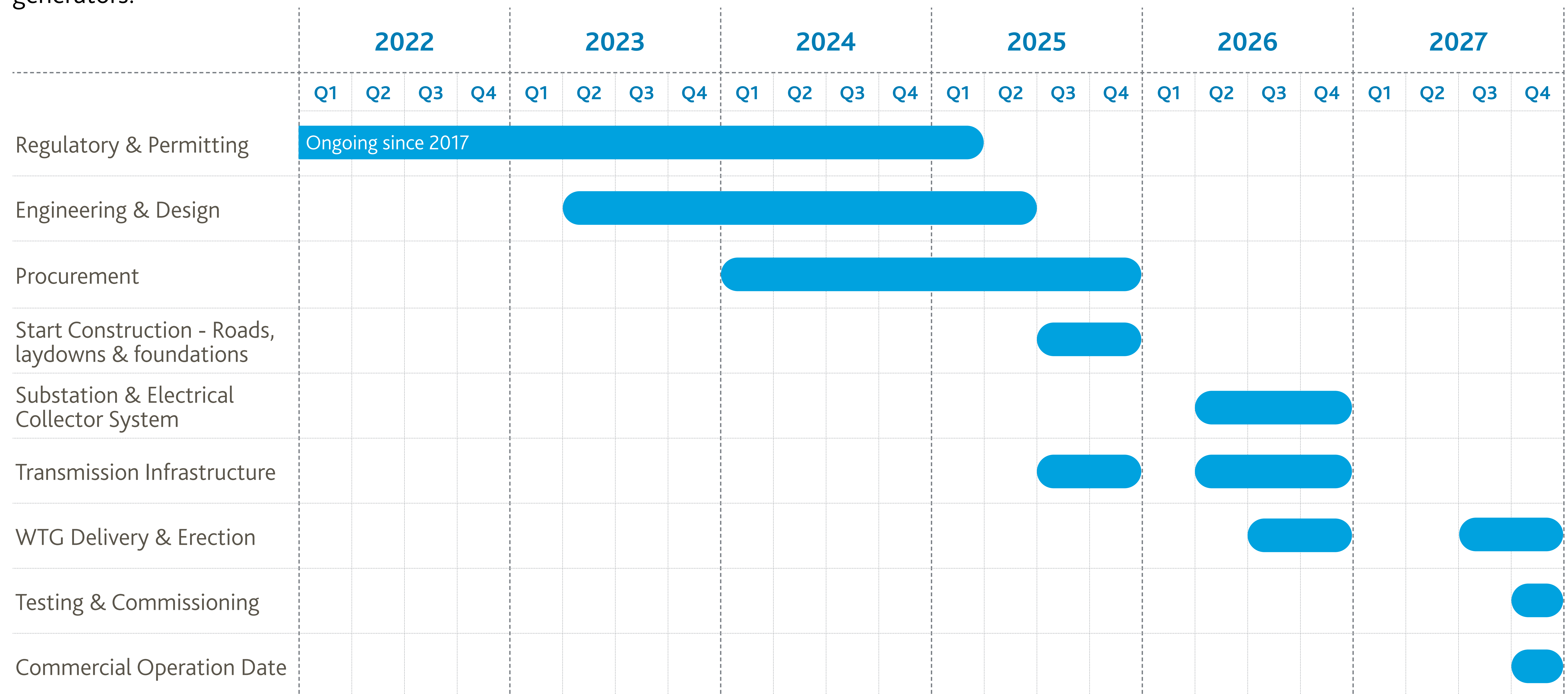


Clearway

The Project is being developed by Two Rivers Wind LLC, a joint venture partnership between BluEarth Renewables US LLC and Clearway Energy Group LLC.

Construction Schedule

The Two Rivers Wind Project will involve one substation, electrical collection systems and access roads, and a 230 kv transmission line to the point of interconnection. In addition, project construction would include road improvements, road construction, and geotechnical investigations and would be followed by construction of foundations, the electrical collection systems, and installation of wind turbine generators.



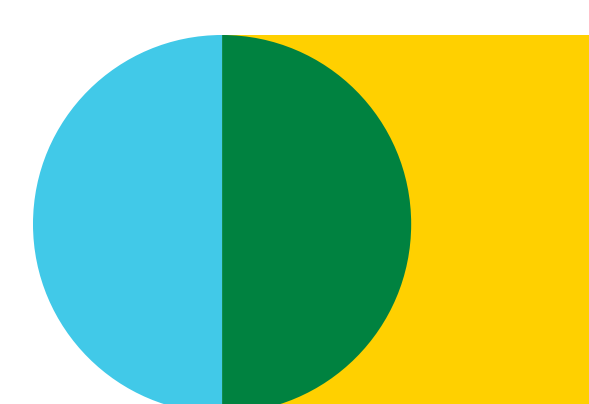
Two Rivers Wind Project

Community Benefits

The Two Rivers Wind Project will benefit the local community through additional long-term tax revenue, employment during construction and operations, and boosts to the local economy with the procurements of goods and services.

	Two Rivers Wind Project
Fiscal Benefits & Tax Revenue	
Cost of Construction	\$649 million*
Material Cost	\$275 million
Local & State Sales Taxes	\$16 million*
Lifetime Wind Tax <small>Lifetime Property Tax & Wind Energy Production Tax</small>	\$111 million* <small>over 30-year project life</small>
Employment Benefits	
Construction Employment	Up to 170
Average Monthly Wage (Construction)	\$3,800 / worker
Operations Employment	Up to 10
Average Monthly Wage (Operations)	\$3,360 / worker

* To be revised based on final regulatory approval



Clearway

The Project is being developed by Two Rivers Wind LLC, a joint venture partnership between BluEarth Renewables US LLC and Clearway Energy Group LLC.

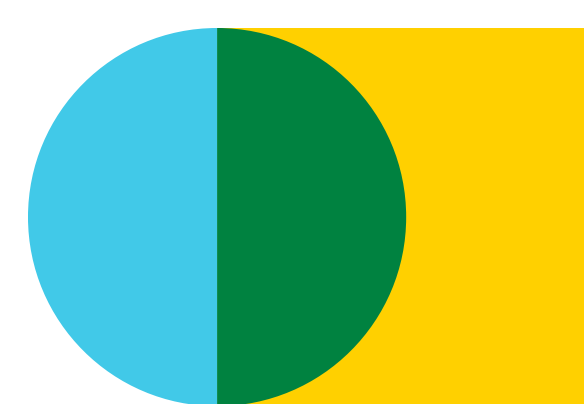
Two Rivers Wind Project

Permits & Coordination

We are actively coordinating with local, state, and federal authorities to minimize any environmental impact that may come as a result of construction and operation of the Project, to obtain the appropriate environmental permits, and to develop species-specific survey and conservation plans, as necessary.

Some of the following items are required, and some are voluntary commitments worked on in coordination with federal, state, and local authorities:

- Carbon County Conditional Use Permit for a Wind Energy Conversion System and Transmission Line
- County Road Use Agreements
- Wyoming Department of Environmental Quality, Industrial Siting Council Section 109 Permit
- Monitoring Plan for Wyoming Game and Fish Department
- Bird and Bat Conservation Strategy
- Pre-Construction Permits (e.g. Wyoming Department of Environmental Quality Large Construction General Permit)
- Eagle Conservation Plan and Eagle Take Permit from U.S. Fish and Wildlife Service
- US Army Corps of Engineers Clean Water Act Section 404 Permit
- Bureau of Land Management - Statutory Right of Way Grant



Clearway

The Project is being developed by Two Rivers Wind LLC, a joint venture partnership between BluEarth Renewables US LLC and Clearway Energy Group LLC.

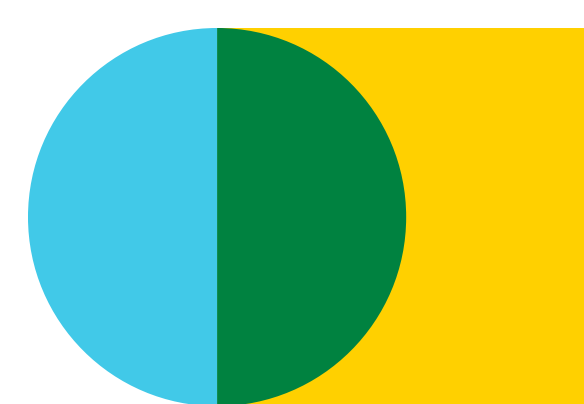
Two Rivers Wind Project

Environmental Studies

Pre-construction wildlife surveys have been conducted consistent with the U.S. Fish and Wildlife Service Land-based Wind Energy Guidelines. We are coordinating extensively with state and federal environmental agencies to gather all necessary baseline data to permit the project. Meetings with the Wyoming Game and Fish Department and U.S. Fish and Wildlife Service have been initiated to determine the level of baseline survey information needed and coordination will continue.

The following environmental studies have been completed, are currently underway, or are planned to be completed for the Project:

- Site Characterization – completed 2018
- Ecological Site Description Mapping – completed 2018
- Sensitive Wildlife Species Surveys – completed 2019
- White Tailed Prairie Dog Colony Mapping – completed 2019
- Avian Use/Eagle Point Count Surveys – completed 2020
- Eagle Activity/Flight Path – completed 2020
- Bat Acoustic Monitoring – completed 2020
- Big Game Fixed Routes – completed 2020
- Erosion Potential Assessment – completed 2018, updated 2022
- Wetland/Waters of the U.S. Delineations – completed 2023
- Raptor Nest Surveys – completed 2020, updated 2024
- Sage Grouse Lek Surveys – completed 2020, updated 2024
- Cultural Resource Surveys – completed 2024



Clearway

The Project is being developed by Two Rivers Wind LLC, a joint venture partnership between BluEarth Renewables US LLC and Clearway Energy Group LLC.

Two Rivers Wind Project

Project Decommissioning

At the end of the Project life, the site will be decommissioned and reclaimed based on industry standards and best practices.

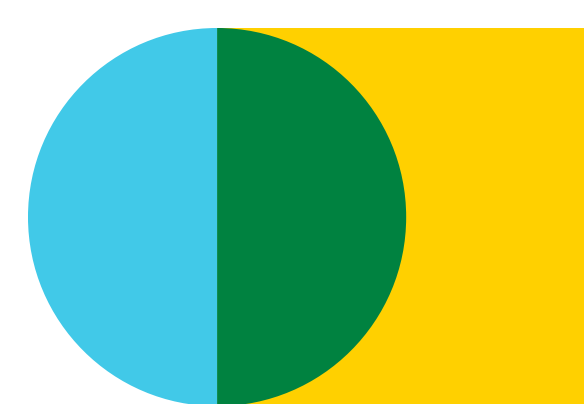
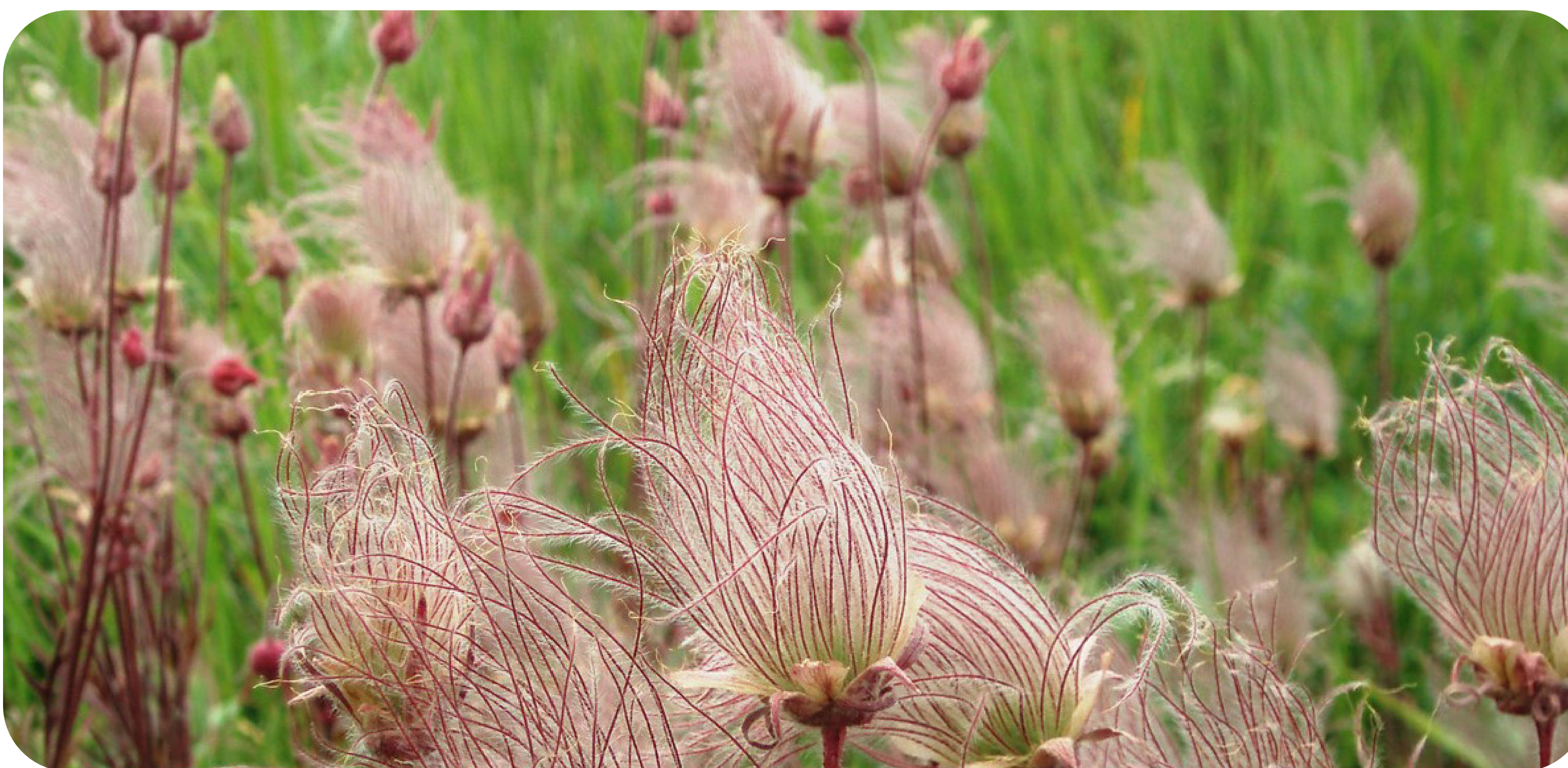
Decommissioning

- Wind turbines disconnected, dismantled and removed from site
- Substation components disconnected, dismantled and removed from site
- Concrete foundations (wind turbine pads, crane pads, substation) removed
- Overhead electrical cables and support structures removed and taken off site
- Underground cables removed
- Roads to be decommissioned and gravel removed*
- Operations and maintenance building to be removed*
- Gates and cattle guards to be removed, fence replacement*

Reclamation

- Roads, turnarounds, crane pads and foundations
- Decompaction of soil
- Filling voids and excavations
- Contouring of land to match pre-construction landscape
- Reseeding with appropriate seed mix as defined by appropriate governing body

* Unless requested by landowner to be left in place



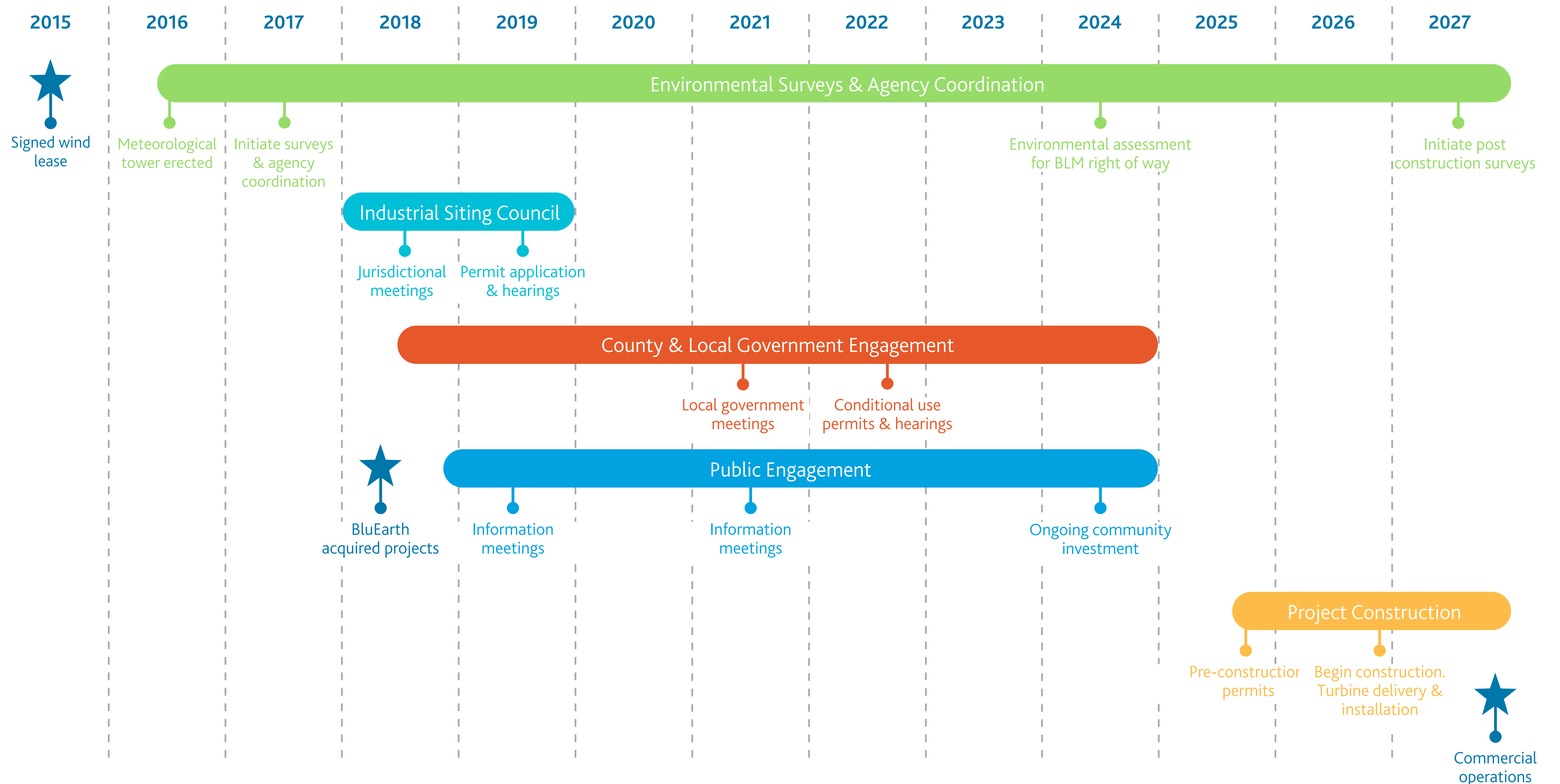
Clearway

The Project is being developed by Two Rivers Wind LLC, a joint venture partnership between BluEarth Renewables US LLC and Clearway Energy Group LLC.

Two Rivers Wind Project



Project Timeline





Thank you for attending!

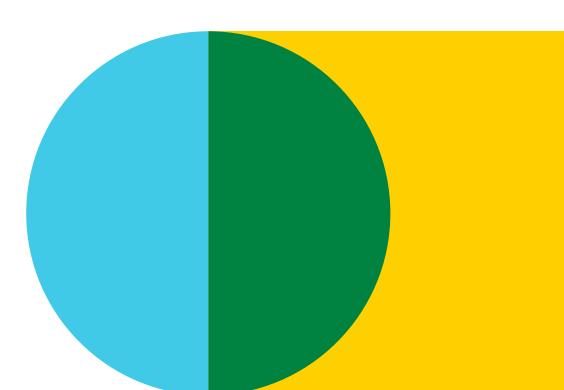
Please fill out a comment form and provide your feedback on the Two Rivers Wind Project.

If you would like to receive updates, please provide us with your name and contact information.

bluearthrenewables.com/two-rivers/

projects@bluearthrenewables.com

1.844.214.2578



Clearway