

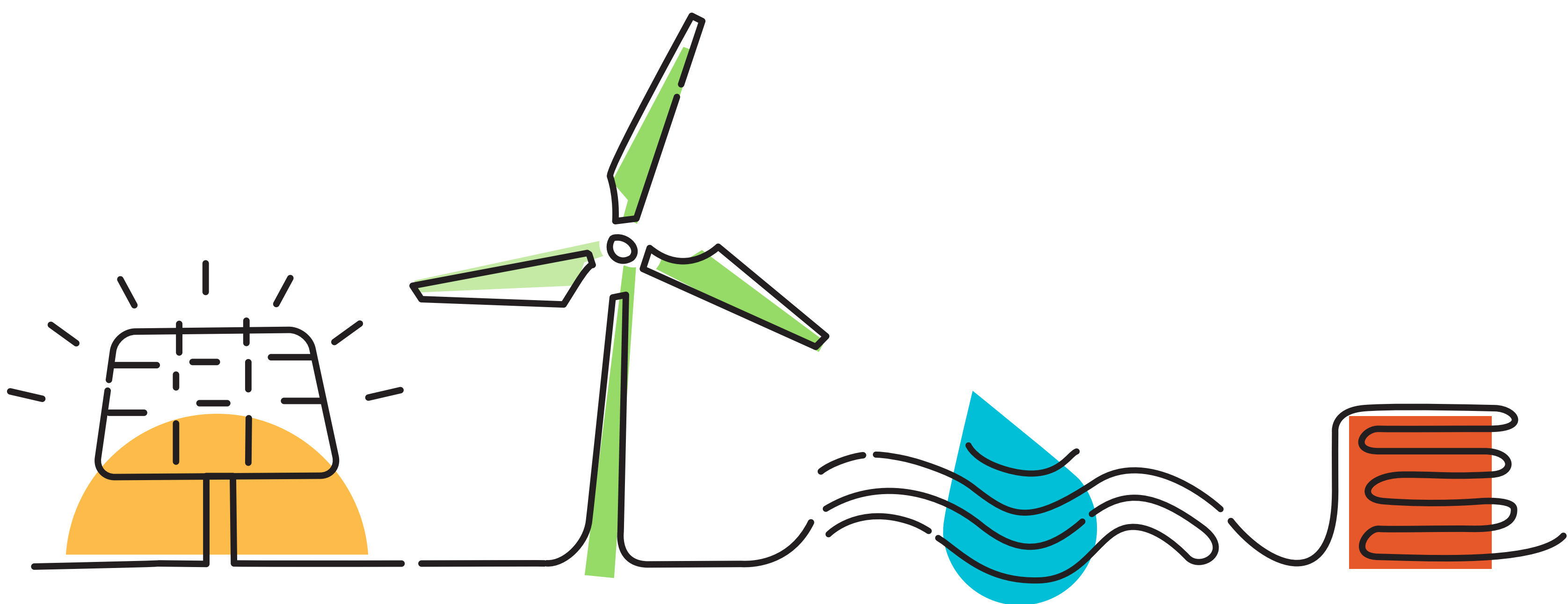
WELCOME TO THE

# Papermill Wind Project Open House

Please sign in at the front and provide your contact information if you would like to receive Project updates

We invite you to walk around and look at the displays. If you have questions or comments, please ask one of our representatives.

*Thank you for attending!*



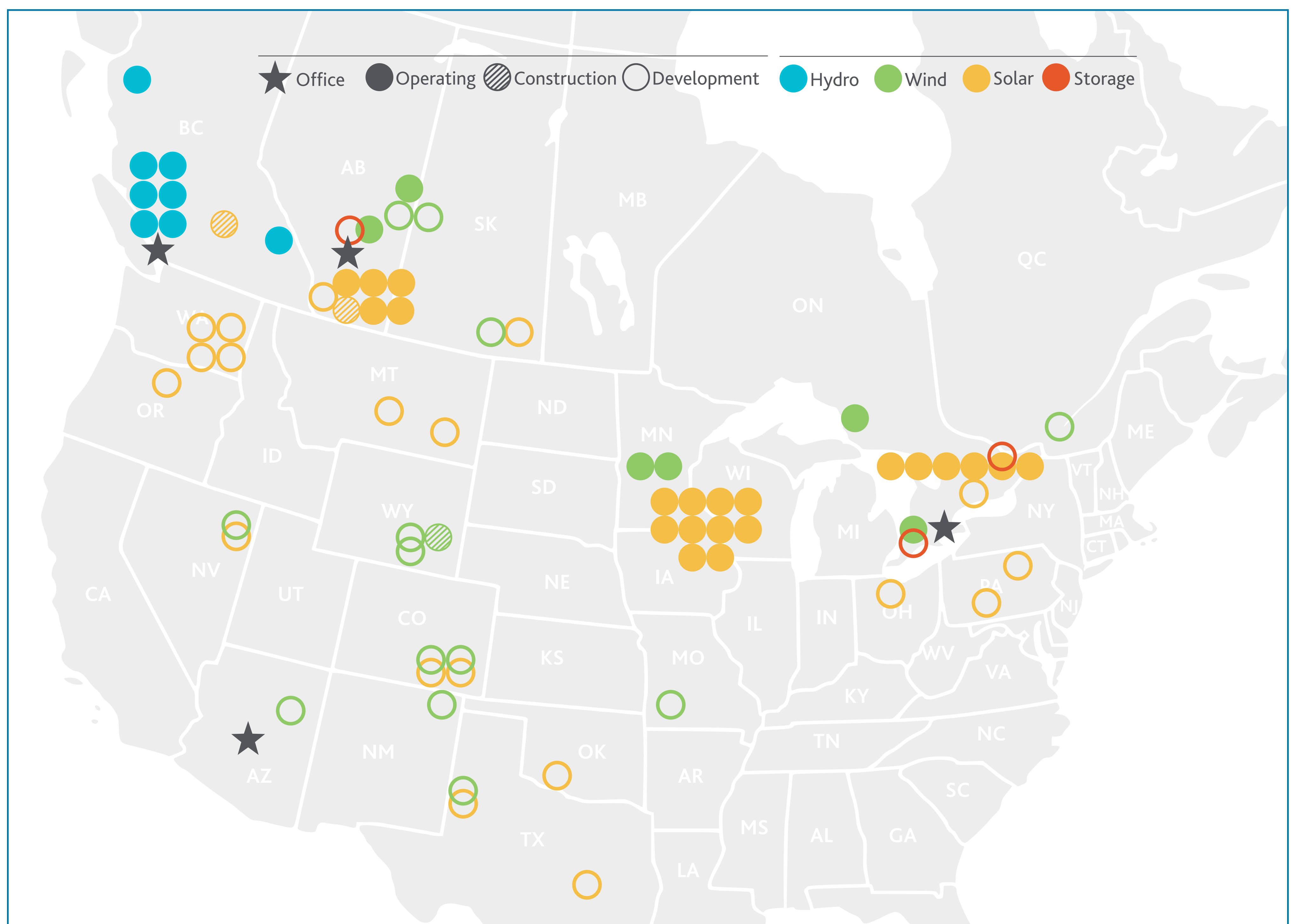


# About BluEarth Renewables

BluEarth Renewables brings together extraordinary people with the power to change the future™ by delivering renewable energy to the power grid every day. We are a leading, independent, power producer that acquires, develops, builds, owns, and operates wind, hydro, solar and storage facilities across North America. Our portfolio includes 1 GW<sub>AC</sub> (gross) in operation, under construction and contracted pre-construction and over 7 GW of high quality development projects that are actively being advanced.

For more information, visit [blueearthrenewables.com](http://blueearthrenewables.com)

## Our Portfolio



BluEarth Renewables US LLC is the US affiliate of BluEarth Renewables Inc.

Power to Change THE FUTURE™

# Project Overview

Development work has been underway on the Papermill Wind Project since 2021.

Over the last two years, we have conducted pre-construction wildlife surveys that are consistent with the U.S. Fish and Wildlife Service Land-based Wind Energy Guidelines and Arizona Game & Fish Department recommendations.

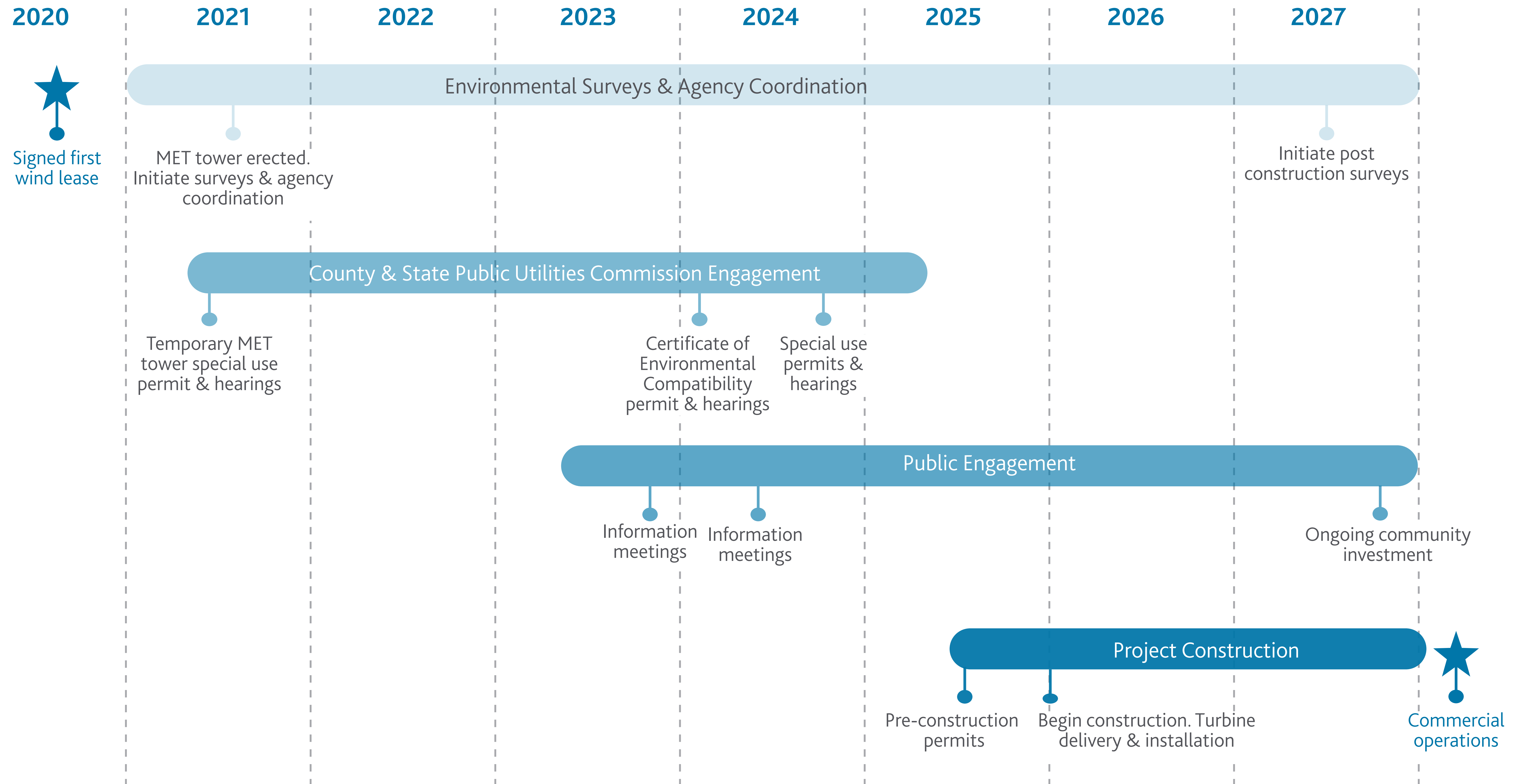
We are planning to submit local and state permit applications required to construct and operate the Papermill Wind Project across private and Arizona State lands in Navajo County, Arizona. In addition, the project is required to obtain a Special Use Permit from the County and a Certificate of Environmental Compatibility from the Arizona Public Utilities Commission.

Project Details	
Location	Near Heber-Overgaard North of Hwy 377 and South of Holbrook
Point of Interconnection	To be determined
Project Area	Approximately 42,000 acres
Expected Capacity	340 MW
Preliminary Site Plan	Up to 80 wind turbines

\*Estimated



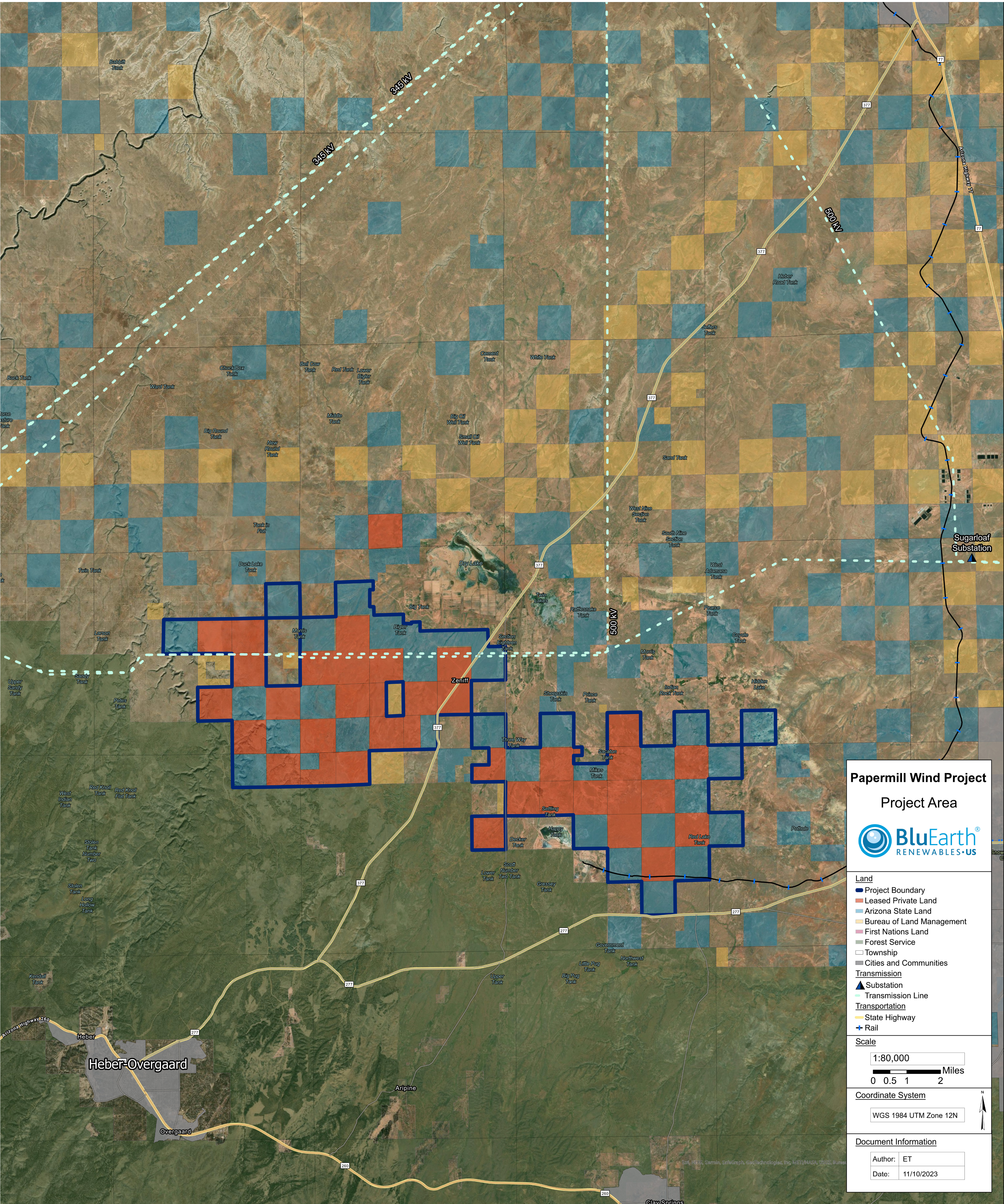
## Project Timeline



# Papermill Wind Project

## Project Location

The Papermill Wind Project is proposed on approximately 42,000 acres of both privately owned and Arizona State lands in Navajo County, near Heber-Overgaard.



# Papermill Wind Project

## Community Benefits

The Papermill Wind Project will benefit the local community through additional long-term tax revenue, employment during construction and operations, and boosts to the local economy with the procurement of goods and services.

Papermill Wind Project	
Fiscal Benefits & Tax Revenue	
Cost of Construction	\$667 million
Local & State Sales Taxes	\$4 million
Lifetime Property Tax	\$38 million
Employment Benefits	
Construction Employment	Up to 170
Average Monthly Wage (Construction)	\$4,500 / worker
Operations Employment	Up to 10
Average Monthly Wage (Operations)	\$4,000 / worker

We are committed to strengthening the local economies where we live, work and operate by investing in and giving back to the local community for decades to come. In addition to the above benefits, we will establish a Community Project Fund to provide annual support to local programs and initiatives, as well as provide local workforce training and upgrades to county roads used for transportation of construction equipment.

Submit a Funding Request at  
[bluearthrenewables.com/funding](http://bluearthrenewables.com/funding)

## Permits & Coordination

We are actively coordinating with local, state, and federal authorities to minimize any environmental impact that may come as a result of construction and operation of the Project, to obtain the appropriate environmental permits, and to develop species-specific survey and conservation plans, as necessary.

Some of the following items are required, and some are voluntary commitments worked on in coordination with federal, state, and local authorities:

- Navajo County Special Use Permit for Wind Energy Generation Facilities
- County Road Use Agreements
- Certificate of Environmental Compatibility issued by the Arizona Powerplant and Transmission Line Siting Committee
- Bird and Bat Conservation Strategy
- Pre-Construction Permits (Multiple Arizona State and Navajo County-level permits required prior to construction, depending on the final site plans and construction methods.)
- Eagle Conservation Plan and Eagle Take Permit from U.S. Fish and Wildlife Service
- US Army Corps of Engineers Clean Water Act Section 404 Permit



# Papermill Wind Project

## Environmental Studies

Pre-construction wildlife surveys have been conducted consistent with the U.S. Fish and Wildlife Service Land-based Wind Energy Guidelines. We are coordinating extensively with state and federal environmental agencies to gather all necessary baseline data to permit the project. Meetings with the Arizona Game and Fish Department and U.S. Fish and Wildlife Service have been initiated to determine the level of baseline survey information needed and coordination will continue.

The following environmental studies have been completed, are currently underway, or are planned to be completed for the Project:

- Site Characterization – Completed 2021
- Ecological Site Description Mapping – Completed 2023
- Cultural Resource Surveys – Completed 2023
- Wetland/Waters of the U.S. Delineations – Completed 2023
- Sensitive Wildlife Species Surveys – Completed 2023
- Avian Use/Eagle Point Count Surveys – Completed 2023
- Raptor Nest Surveys – Completed 2023
- Eagle Activity/Flight Path – Completed 2023
- Bat Acoustic Monitoring – Completed 2023
- Erosion Potential Assessment – Anticipated Completion 2024



## Project Decommissioning

At the end of the Project life, the site will be decommissioned and reclaimed based on industry standards and best practices.

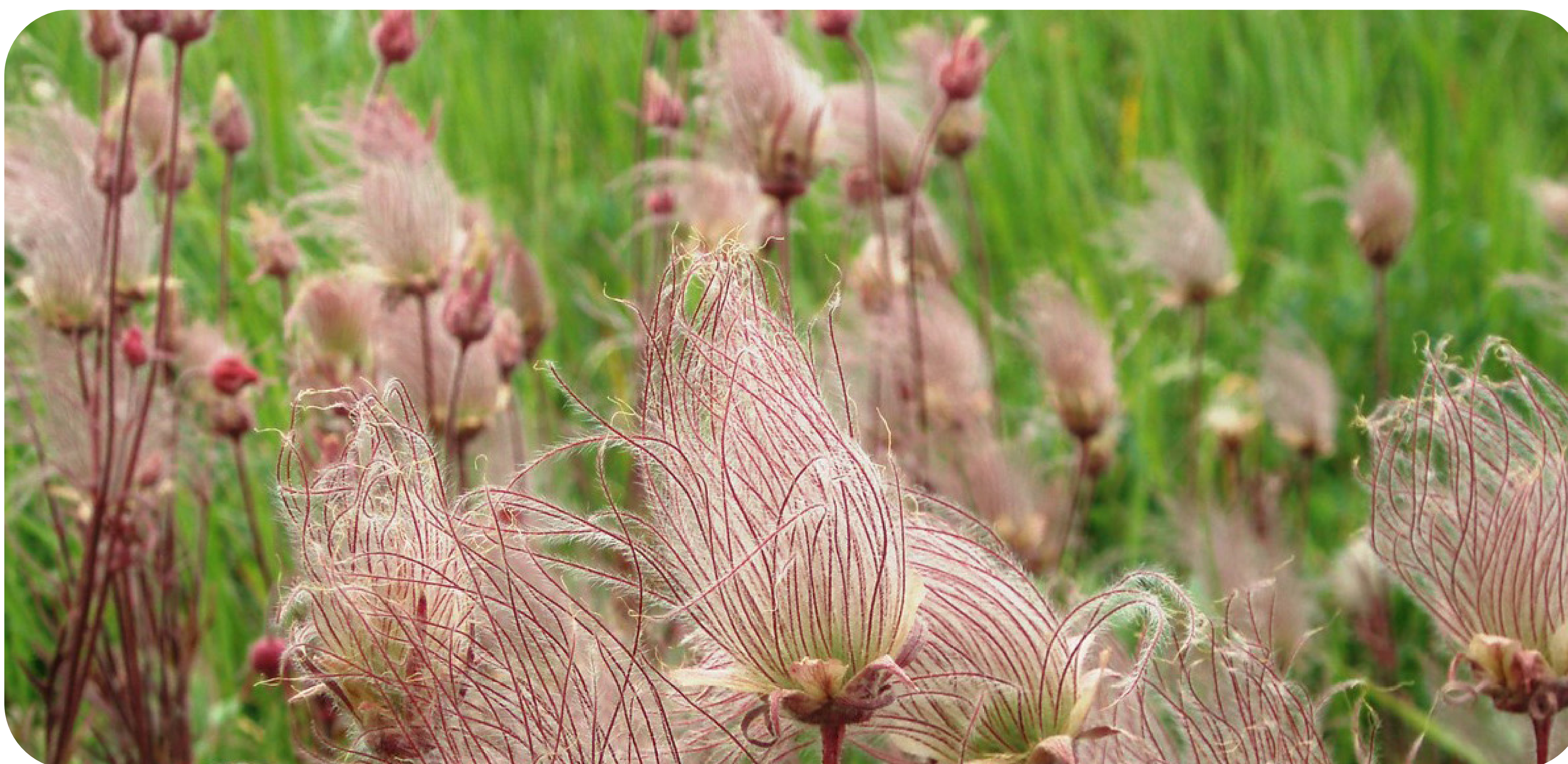
### Decommissioning

- Wind turbine removal - disconnected, dismantled and removed from site
- Substation removal - components disconnected, dismantled and removed from site
- Concrete foundations (wind turbine pads, crane pads, substation) removed
- Overhead electrical cables and support structures removed and taken off site
- Underground cables removed
- Roads to be decommissioned and gravel removed\*
- Operations and maintenance building to be removed\*
- Gates and cattle guards to be removed, fence replacement\*

### Reclamation

- Roads, turnarounds, crane pads and foundations
- Decompaction of soil
- Filling voids and excavations
- Contouring of land to match pre-construction landscape
- Reseeding with appropriate seed mix as defined by appropriate governing body

\* Unless requested by landowner to be left in place



# Thank you for attending!

We appreciate the opportunity to share more information with you about the Papermill Wind Project.

We look forward to working with you to strengthen the local economy by investing in and giving back to the community for decades to come.

**Visit:** [blueearthrenewables.com/papermill](http://blueearthrenewables.com/papermill)

**Email:** [projects@blueearth.ca](mailto:projects@blueearth.ca)

**Phone:** 1.844.214.2578

