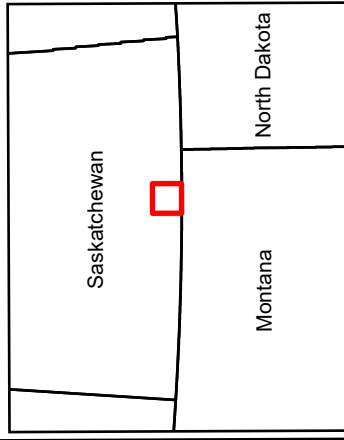


Outlaw Trail Wind



 Project Area



Scale

1:250,000

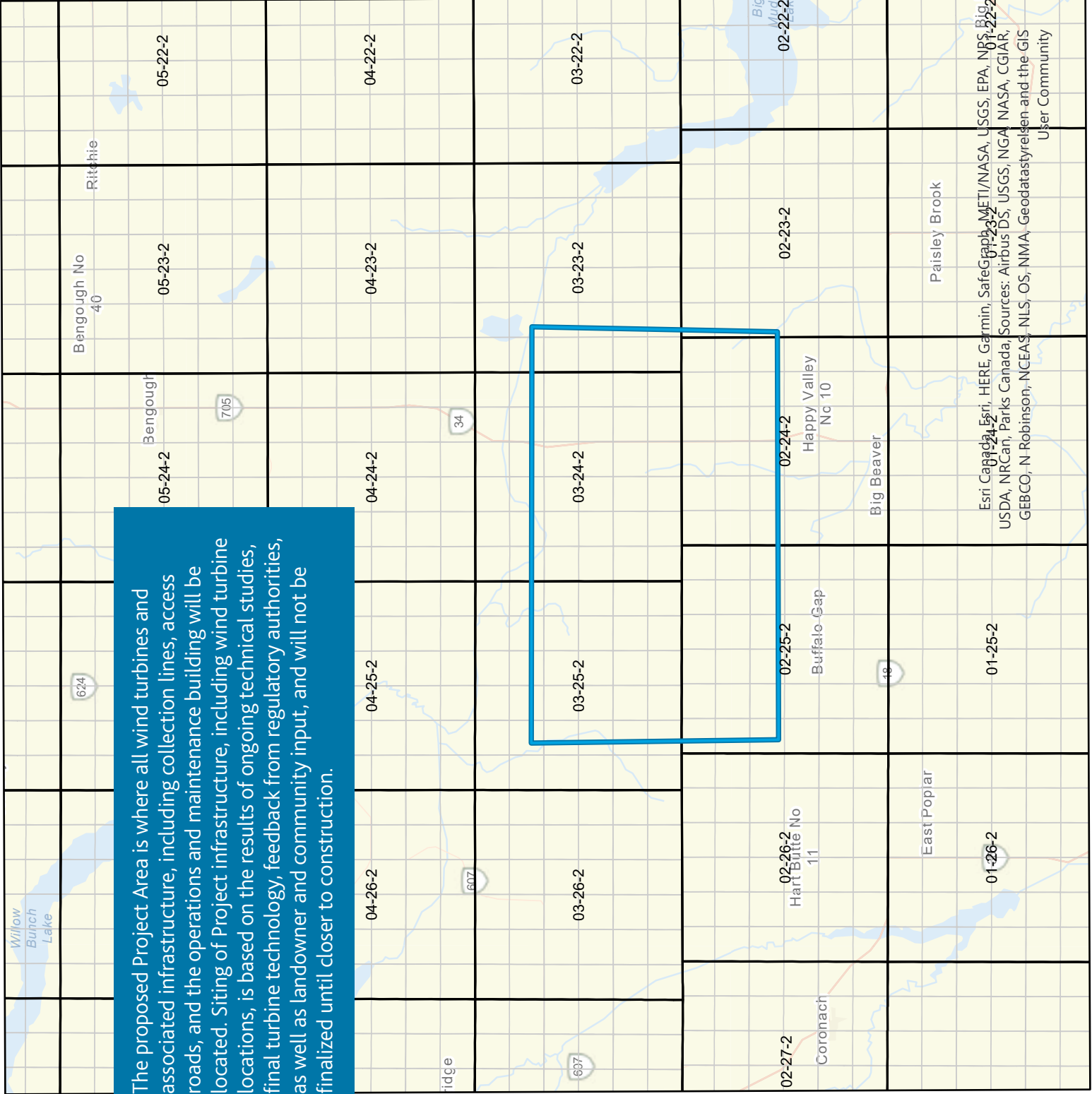


Coordinate System

WGS 1984 UTM Zone 13N

Document Information

Author:	RD
Date:	10/30/2023



The proposed Project Area is where all wind turbines and associated infrastructure, including collection lines, access roads, and the operations and maintenance building will be located. Siting of Project infrastructure, including wind turbine locations, is based on the results of ongoing technical studies, final turbine technology, feedback from regulatory authorities, as well as landowner and community input, and will not be finalized until closer to construction.

Esri Canada, Esri, HERE, Garmin, SafeGraph, METI/NASA, USGS, EPA, NPS, Big
 Ogea, 01-23-2, 01-22-2
 USDA, NRCAN, Parks Canada, Sources: Airbus DS, USGS, NGA, NASA, CGIAR,
 GEBCO, N Robinson, NCEAS, NLS, OS, NMA, Geodatastyrelsen and the GIS
 User Community