

Appendix G

Emergency Response Plan

TWO RIVERS WIND PROJECT EMERGENCY RESPONSE PLAN

PREPARED FOR:

Two Rivers Wind LLC
c/o Cogency Global
850 New Burton Road, Suite 201
Dover, Delaware 19004 USA
Contact: Glenn Isaac, Director of Regulatory and Environment, BluEarth
glenn@bluearth.ca

PREPARED BY:



3665 John F. Kennedy Parkway, Building 1, Suite 300
Fort Collins, CO 80525

December 2022

Contents

| | |
|--|-----------|
| Tables | ii |
| Figures | ii |
| Chapter 1 Objective..... | 1 |
| Chapter 2 Project Overview..... | 2 |
| 2.1 Project Definition..... | 2 |
| 2.2 Project Schedule..... | 5 |
| Chapter 3 Health and Safety Measures | 7 |
| Chapter 4 Primary Emergency Response Team..... | 8 |
| 4.1 ERP Coordination Team..... | 8 |
| 4.2 On-Site Emergency Response Safety Coordinator | 9 |
| 4.3 Carbon County Office of Emergency Management..... | 9 |
| 4.3.1 Carbon County Emergency Operations Center (C4:EOC) | 9 |
| 4.4 South Central Wyoming EMS Joint Powers Board | 10 |
| 4.5 Carbon County Sheriff’s Department | 10 |
| 4.6 Carbon County Fire Department | 10 |
| 4.7 Carbon County Hospitals | 10 |
| Chapter 5 Other Emergency Response Support | 12 |
| 5.1 Police, Fire, and Emergency Service Departments..... | 12 |
| 5.2 Hospitals and Health Clinics..... | 12 |
| 5.2.1 Medicine Bow Health Clinic | 12 |
| 5.2.2 Energy Basin Clinic | 13 |
| 5.3 Wyoming Regional Emergency Response Team..... | 13 |
| Chapter 6 Emergency Response Provider Locations..... | 14 |
| 6.1 Emergency Services in Project Area | 14 |
| 6.2 Memorial Hospital of Carbon County..... | 16 |
| 6.3 Wyoming Medical Center..... | 17 |
| Chapter 7 Evaluation of Site and Activity Risks | 18 |
| 7.1 Site Safety and Security Controls..... | 18 |
| 7.2 Occupational Hazards..... | 19 |
| 7.3 Site Risks | 20 |
| 7.4 Activity Risks | 20 |
| 7.4.1 Pre-Construction Activities | 20 |
| 7.4.2 Construction Activities..... | 20 |

| | |
|--|-----------|
| Chapter 8 On-Site Emergency Response Requirements | 21 |
| 8.1 Staffing..... | 21 |
| 8.2 Equipment | 21 |
| 8.3 Training..... | 22 |
| 8.4 Transportation..... | 22 |
| Chapter 9 Communications | 23 |
| 9.1 Signage..... | 23 |
| 9.2 Project Radio, Landline Telephones, and Cell Phones..... | 23 |
| 9.3 General Emergency Response Protocol | 23 |
| 9.4 Response Plans | 23 |
| 9.4.1 Medical Emergencies..... | 24 |
| 9.4.2 Fire or Hazardous Materials Release | 24 |
| 9.4.3 Severe Weather and Catastrophic Events | 24 |
| Chapter 10 References | 25 |

Tables

| | |
|--|---|
| Table 1. Two Rivers Wind Project Construction Schedule | 6 |
| Table 2. Emergency Response Plan Coordination Team Members | 8 |

Figures

| | |
|---|----|
| Figure 1 Project Location Map | 3 |
| Figure 2 Preliminary Site Plan (1 of 2)..... | 4 |
| Figure 4 Emergency Responder Service Provider Locations | 15 |
| Figure 5 Location of Memorial Hospital..... | 16 |

Attachment 1 Emergency Response Forms and Checklists

Acronyms and Abbreviations

| | |
|-----------------|---|
| CFR | Code of Federal Regulations |
| EMS JPB | Emergency Medical Services Joint Powers Board |
| EMT | Emergency Medical Technician |
| ERP | Emergency Response Plan |
| IMHAC | Iverson Memorial Hospital of Albany County |
| kV | kilovolt |
| MHCC | Memorial Hospital of Carbon County |
| MW | Megawatt |
| O&M | Operations and Maintenance |
| OSHA | Occupational Safety and Health Administration |
| Project | Two Rivers Wind Project |
| PSAP | Public-Safety Answering Point |
| SCADA | Supervisory Control and Data Acquisition |
| Two Rivers Wind | Two Rivers Wind LLC |
| USC | United States Code |
| WMC | Wyoming Medical Center |
| WTG | Wind Turbine Generator |

Chapter 1

Objective

Two Rivers Wind LLC (“Two Rivers Wind”) has developed this Emergency Response Plan (ERP or the “Plan”) for the Two Rivers Wind Project (the “Project”) to document the coordinated approach for responses to emergencies that may occur on the Project site. This ERP evaluates potential risks and emergencies associated with the Project, describes the roles and responsibilities for Two Rivers Wind employees, contractors, vendors, and regional emergency service providers, and details response protocols.

It is assumed that Two Rivers Wind will provide on-site resources for the initial response to most emergencies during the construction, operations, and decommissioning phases of the Project. Emergency response resources and capabilities on-site will align with the risk associated with each stage of the Project. For emergencies requiring outside resources, Two Rivers Wind will request assistance from local emergency response agencies.

This ERP will be updated periodically as Project construction, operations and decommissioning activities evolve. Two Rivers Wind will coordinate with local and regional emergency response service providers to maintain adequate resources and communication throughout the life of the Project. This version of the ERP has been developed based on current pre-construction information and does not yet include information from contractor safety plans or turbine vendor data. This ERP will be modified accordingly as the schedule and plans are finalized, contractors are hired, and equipment is selected.

This section of the ERP briefly describes the components of the Project, as well as the Project location and schedule. It will continue to be updated throughout the life of the Project. A detailed summary of the Project's design and components can be found in the Project's Conditional Use Permit Application.

2.1 Project Definition

The Project is located in Carbon County immediately to the north of the Town of Medicine Bow. The Project area can be accessed from WY 487 (northern site) and US 30/287 (southern site).

The number and generation capacity of wind turbine generators has not yet been finalized; however, preliminary plans for the proposed facility include up to 60 wind turbine generators (WTGs). Ancillary facilities would include an operations and maintenance building, a concrete batch plant, internal project road network, an internal 34.5 kilovolt (kV) electrical collection system, one substation, and a Supervisory Control and Data Acquisition (SCADA) system. Figure 1, Figure 2, below show the general location and preliminary site plan for the Project.

Figure 1 Project Location Map

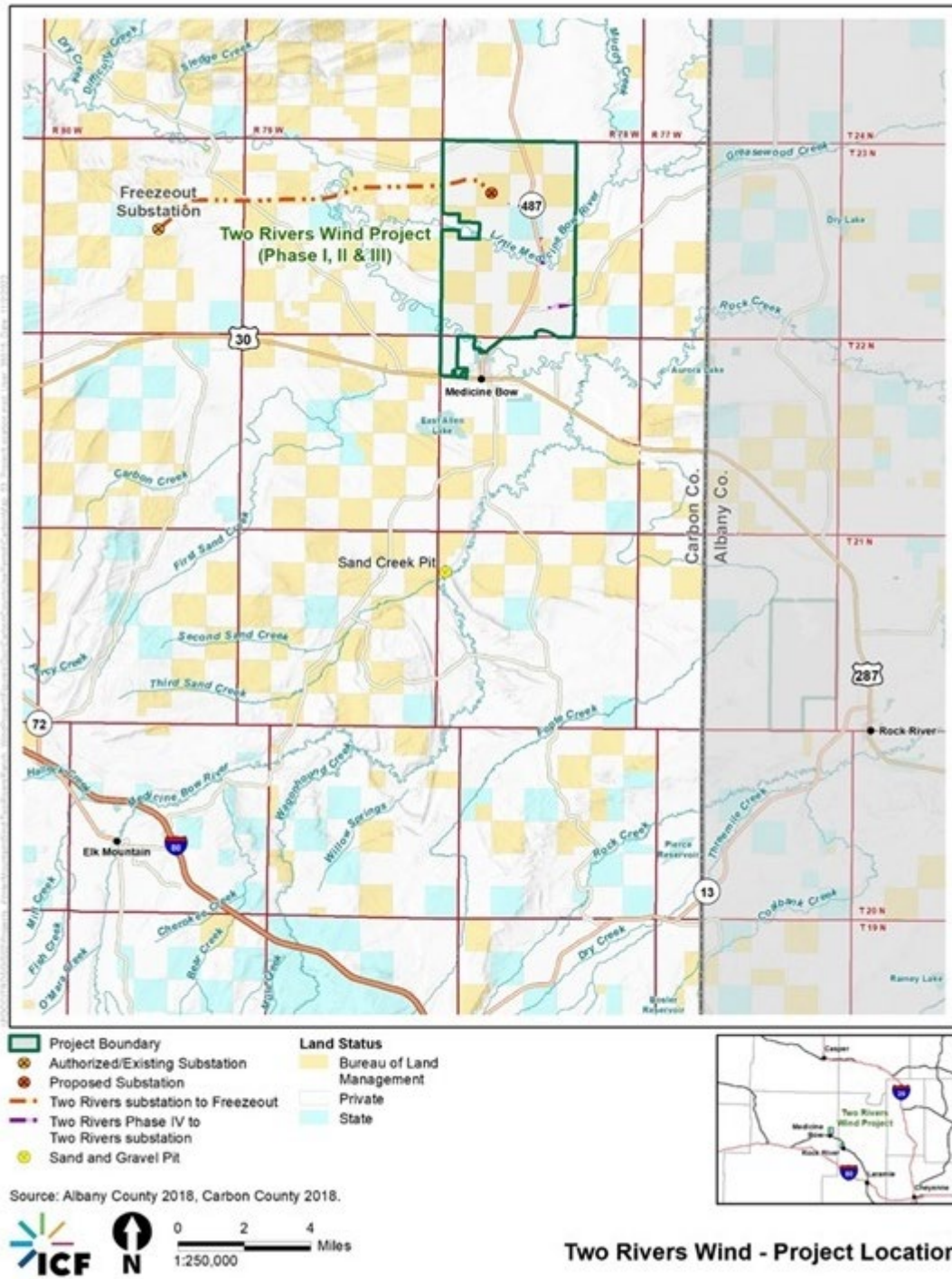
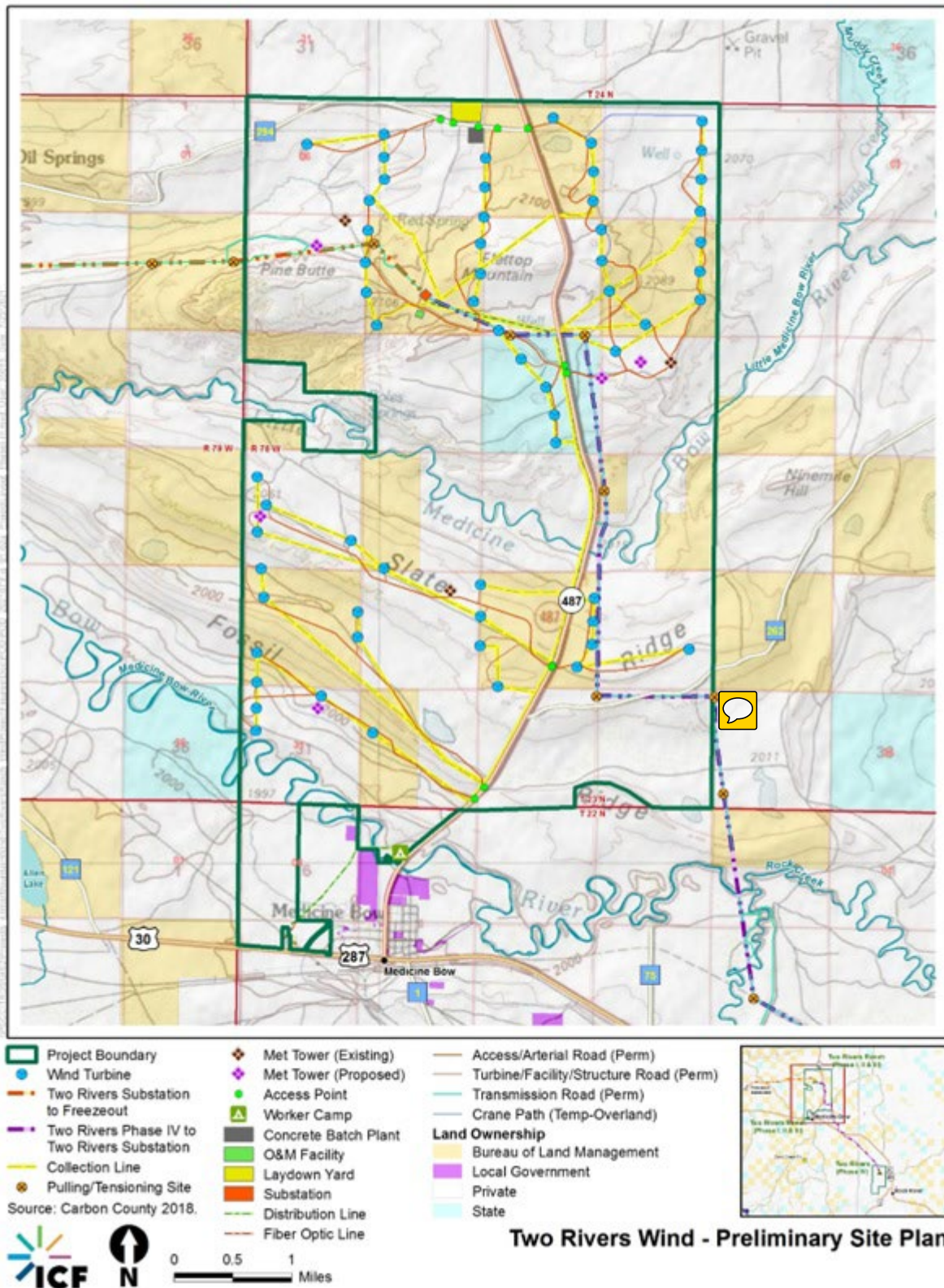


Figure 2 Preliminary Site Plan (1 of 2)



2.2 Project Schedule

The Project is anticipated to be constructed over three construction seasons, once authorized. A schedule for construction sequencing of primary Project components is indicated in **Table 1** below.

Table 1. Two Rivers Wind Project Construction Schedule

| Construction Task | 2023 | | | | | | | | | | | | 2024 | | | | | | | | 2025 | | | | | | |
|--|------|---|---|---|---|---|---|---|---|---|---|---|------|---|---|---|---|---|---|---|------|---|---|---|---|---|---|
| | J | F | M | A | M | J | J | A | S | O | N | D | J | F | M | A | M | J | J | A | S | O | N | D | J | F | M |
| Mobilization & Site Preparation | | | | ■ | ■ | ■ | ■ | ■ | ■ | ■ | ■ | ■ | | | | ■ | ■ | ■ | ■ | ■ | ■ | ■ | ■ | | | | |
| Geotech & Site Engineering | | | | ■ | ■ | ■ | ■ | ■ | ■ | ■ | ■ | ■ | | | | ■ | ■ | ■ | ■ | ■ | ■ | ■ | ■ | ■ | | | |
| Road Improvements | | | | | ■ | ■ | ■ | | | | | | | | | ■ | ■ | ■ | | | | | | | | | |
| Road Construction & Culvert Installation | | | | | | ■ | ■ | ■ | ■ | | | | | | | ■ | ■ | ■ | ■ | | | | | | | | |
| Foundation Construction | | | | | | | | | ■ | ■ | | | | | | ■ | ■ | ■ | ■ | | | | | | | | |
| Collection System Construction | | | | | | | | | | | | | | | | ■ | ■ | ■ | ■ | ■ | | | | | | | |
| WTG Installation and Wiring | | | | | | | | | | | | | | | | | ■ | ■ | ■ | ■ | | | | | | | |
| Transmission Line Construction | | | | | | | | | | | | | | | | | ■ | ■ | ■ | ■ | ■ | | | | | | |
| WTG Completion & Commissioning | | | | | | | | | | | | | | | | | | | ■ | ■ | | | | | | | |
| Site Reclamation | | | | | | | | | | | | | | | | | | | ■ | ■ | ■ | ■ | | | | | |
| Electrical Commissioning | | | | | | | | | | | | | | | | | | | | | | ■ | ■ | ■ | ■ | ■ | ■ |
| Commercial Operation | | | | | | | | | | | | | | | | | | | | | | | ■ | ■ | ■ | ■ | ■ |

Chapter 3

Health and Safety Measures

Two Rivers Wind, including their contractor(s) and operations and maintenance (O&M) staff, is committed to a safe and healthy workplace that promotes a zero-accident culture. Two Rivers Wind and its partners are committed to continuous improvements to identify and control risks so that company safety metrics and performance meets the goal of zero incidents. To meet this commitment, the Projects' health and safety policies will:

- Provide workers and work vehicles with a copy of emergency contact numbers and procedures to be easily accessed.
- Provide all workers with the locations of muster points for emergency situations.
- Ensure all employees are involved in the health and safety program with appropriate training to work safely and responsibly.
- Facilitate the reviewing the contents of the Plan with all personnel to ensure familiarity with established responsibilities.
- Enable real-time communication on-site through the installation and use of a two-way radio system that would be employed throughout construction and during operations of the facility.
- Amending the Plan, as necessary, throughout the life of the Project.

Employees will be trained in the proper response and actions to be taken in the event of an explosion, fire, chemical release, severe weather (major lightning storms or tornadoes) or medical emergency. Employees will be trained to notify the proper personnel or emergency service provider, assist in controlling the situation (if safe to do so), and proceed to a designated muster point until the situation is under control.

It is anticipated that spills will be contained and cleaned up by an appropriate contractor. Additionally, all spills will be reported to the Wyoming Department of Environmental Quality, as required by the Wyoming Environmental Quality Act. Any spills occurring on BLM-administered land will also be directly reported to the BLM Rawlins Field Office.

Employees responsible for documenting an emergency situation will be trained in the proper reporting procedures in compliance with county, state, and federal regulations.

Chapter 4

Primary Emergency Response Team

This section identifies the primary on-site, local and regional emergency response service providers, and provides a description of their roles and responsibilities, available resources, and contact information.

4.1 ERP Coordination Team

An ERP Coordination Team, including members representing the Project and local and regional emergency service providers, has been created to assist in the development and implementation of the Project’s ERP. Table 2 below provides the names and contact information of the current ERP Coordination Team members, which may need to be updated closer to Project construction.

Table 2. Emergency Response Plan Coordination Team Members

| Agency/Corporation | Name | Role | Phone/email | Address |
|--|--------------------------|---------------------------|--|--|
| Construction Contractor | <i>To be determined.</i> | | | |
| Carbon County Emergency Management Director | Lenny Layman | EM Coordinator | 307-328-2680 lennylayman@carbonwy.com | 215 W. Buffalo St. Rawlins, WY 82301 |
| South Central Wyoming EMS Joint Powers Board | Stayton Mosbey | Regional EMS Coordination | 307-710-7559 | P.O. Box 1192 Saratoga, WY 82331 |
| Carbon County Sheriff's Department | Alex Bakken | County Sheriff | 307-920-1883 alexbakken@carbonwy.com | P.O. Box 190 415 West Pine Street Rawlins, WY 82301 |
| Wyoming Highway Patrol | Caleb Hobbs | Division P Supervisor | 307-348-7770 | 5300 Bishop Blvd. Cheyenne, WY 82009 |
| Carbon County Fire Department | John Rutherford | Fire Warden | 307-320-7964 johnrutherford@carbonwy.com | P.O. Box 754 2712 East Murray Street Rawlins, WY 82301 |
| Rock River Volunteer Fire Department | Rick Stricklin | Fire Chief | 307-460-8752 | PO BOX 94 Rock River, WY 82083 |
| Memorial Hospital of Carbon County | Tiffany Gruetzmacher | ER Manager | 307-321-6420 (Cell) 307-324-8227 (Home) | 2221 West Elm Street Rawlins, WY 82301 |

| Agency/Corporation | Name | Role | Phone/email | Address |
|--|---------------|------------------------------------|--------------|--|
| Wyoming Medical Center and Wyoming Life Flight | | | 800-822-7201 | 1233 East Second Street Casper, WY 82601 |
| Carbon County Public Health | Emily Kaluzny | Public Health Response Coordinator | 307-320-5902 | P.O. Box 39, 201 S. River St., Saratoga, WY 82331 |
| Public-Safety Answering Point (PSAP) Test (911 Test Call)* | | | 307-324-2776 | |

*Notify Carbon Sheriff prior to conducting 911 Test Call

4.2 On-Site Emergency Response Safety Coordinator

Two Rivers Wind will have emergency response staff with first-responder training on-site during construction activities to provide immediate response to emergencies. Two Rivers Wind will designate a Safety Coordinator who would be responsible for emergency responses on-site, including fire related emergencies. Emergency response resources and capabilities on-site will align with the risk associated with each stage of the Project.

4.3 Carbon County Office of Emergency Management

Carbon County's population is 14,971 and covers an area of 7,964 square miles. Within its borders are 11 separate jurisdictions, one city, nine towns, a large unincorporated portion of the county, five Fire Agencies in coordination with BLM and Forest Service, seven Law Enforcement Agencies, seven Emergency Medical Services, multiple Road and Bridge/Public Works Agencies, one Hospital, ten Clinics, 32 Critical Facilities identified in the 2019 Wyoming Region 3 Hazard Mitigation Plan, and 124 Tier II submissions via the 2019 Wyoming Tier II portal. Carbon County's Emergency Response agencies are staffed with a combination of paid and volunteer staff, with the volunteer staff making up the majority. Multiple jurisdictions have an all-volunteer emergency response agency. Carbon County is bordered by five other Wyoming counties, each having multiple response agencies, and shares over 80 miles of border with Colorado. The Carbon County Office of Emergency Management works in all five Mission Areas, Prevention, Protection, Mitigation, Response, and Recovery through all levels of Planning, Organizing, Equipping, Training, and Exercising.

4.3.1 Carbon County Emergency Operations Center (C4:EOC)

The C4:EOC Activates in a Support & Coordination role with the Incident Commander. The C4:EOC is the Chain of Authority to the Elected Official (Policy Group). The C4:EOC Activates during All-Hazard events. The C4:EOC is under the authority of the Carbon County Office of Emergency Management. The C4:EOC Manager works under the authority of the Carbon County Emergency Management Director. The C4:EOC has multiple workstation (C4Manager, C4Logistics, C4Finance, C4Planning, C4Operations, C4ESF, C4GIS, C4Comms, C4PIO, and C4CallCenter) and activates to three separate

levels; Level 3-Monitor Only, Level 2-Partial, and Level 1-Full Activation. The Carbon County Emergency Management Director, along with the Board of County Commissioners, will determine appropriate Activation Level.

4.4 South Central Wyoming EMS Joint Powers Board

The South Central Wyoming Emergency Medical Services Joint Powers Board (EMS JPB), based out of Saratoga, provides emergency medical services (including basic and advanced life support services) to the towns of Medicine Bow, Hanna, Elk Mountain, and the surrounding unincorporated areas. They jointly share the fire stations located in those towns and, depending on staffing, have two ambulances stationed in Hanna, one ambulance stationed in Elk Mountain, and one ambulance stationed in Medicine Bow. The purpose of the EMS JPB is to provide unified planning and coordination of emergency medical service systems in South Central Wyoming, and provide, by working with participating agencies and Carbon County, for the necessary ongoing operation and management of emergency medical services and ensure efficient utilization of equipment, facilities, and service. In this capacity, the South Central Wyoming EMS JPB is participating as a primary emergency response provider for the Project.

4.5 Carbon County Sheriff's Department

The Carbon County Sheriff's Department provides law enforcement services for Carbon County outside the jurisdiction of municipalities with local police departments and outside Interstate 80, which is under the jurisdiction of the Wyoming Highway Patrol. The Medicine Bow Police department also contracts through the Carbon County Sheriff's Department. Law enforcement in the Project area is under the jurisdiction of the Carbon County Sheriff's Departments, and in this capacity, they are participating as a primary emergency response provider for the Project.

4.6 Carbon County Fire Department

The Carbon County Fire Department would be the designated fire protection service provider for the Project site. The Carbon County Fire Department, located in Rawlins, has one station with 27 paid volunteers and 4 basic Emergency Medical Technicians (EMTs) that serve 3,500 square miles and a population of 18,000 (Wyoming State Fire Marshal 2015). The Carbon County Fire Department has four divisions: Hanna Division, Rock Creek Division, Rawlins Division, and Ryan Park Division. The Hanna Division of the Carbon County Fire Department is the closest in proximity to the Project and has one station with 11 volunteer fire-fighters. Because the Project is outside the boundaries of the surrounding communities, it is within the jurisdiction of the Carbon County Fire Departments, and in this capacity, they are participating as primary emergency response provider for the Project.

4.7 Carbon County Hospitals

The Memorial Hospital of Carbon County (MHCC) is the primary hospital in Carbon County and is located approximately one hour from the Project site in Rawlins. It maintains a 24-hour trauma-

rated emergency room and a 25-bed critical care facility. MHCC provides emergency services to roughly 14,000 square miles of Carbon County.

The hospital operates three four-wheel drive ambulances and one two-wheel drive ambulance, which may be available to respond to a Project-related emergency. The hospital partners with Global Air Rescue to provide flight-for-life air ambulance service. In this capacity, the hospital's Emergency Medical Services coordinator has been invited to participate with the ERP Coordination Team.

Chapter 5

Other Emergency Response Support

Two Rivers Wind will meet with and provide copies of the ERP to other emergency service providers in the region, as requested. While Two Rivers Wind is not expecting that additional agencies will need to respond to an emergency at the Project site, it remains a possibility and therefore, if requested by Carbon County, additional agencies will be kept up to date on the Project and ERP.

5.1 Police, Fire, and Emergency Service Departments

Additional law enforcement services in the vicinity of the Project area include the following organizations:

- Town of Hanna Police Department;
- Rawlins Police Department; and
- Wyoming Highway Patrol.

Additional fire protection services in the vicinity of the Project area include the following organizations:

- Elk Mountain Volunteer Fire Department;
- Rawlins Fire Department;
- Encampment/Riverside Fire Department;
- Ryan Park Volunteer Fire Department in Saratoga;
- Saratoga Volunteer Fire Department; and
- Sinclair Refinery Volunteer Emergency Response Team in Sinclair.

Carbon County is also contracted with Medicine Bow Fire and Baggs Fire to provide services on an as-needed basis.

5.2 Hospitals and Health Clinics

Additional health services in the Project area include the following organizations:

- Medicine Bow Health Clinic in Medicine Bow; and
- Energy Basin Clinic in Hanna.

5.2.1 Medicine Bow Health Clinic

The Medicine Bow Health Center is located in close proximity to the Project site in the Town of Medicine Bow, WY. The clinic is open Tuesday through Friday from 8 a.m. to 5 p.m. They have a Physician's Assistant on staff and a Supervising Physician that is on-call and available by

appointment. The Medicine Bow Health Center provides non-critical care/family medicine. The clinic's service area includes Medicine Bow, Hanna, Elk Mountain, Rock River, and unincorporated areas of Albany County and Carbon County. Because of their close proximity to the Project site and because they serve unincorporated areas of Carbon County, they have been invited to participate in the development of this ERP.

5.2.2 Energy Basin Clinic

The Energy Basin Clinic is located in Hanna and is open from 9:00 a.m. to 4:00 p.m. on Thursdays and many Tuesdays. A Physician's Assistant is available to attend to family practice (Town of Hanna 2019).

5.3 Wyoming Regional Emergency Response Team

The Wyoming Emergency Response Act (35-9-151) established eight Regional Emergency Response Teams under the authority of the Wyoming Office of Homeland Security. Carbon County is located within Region 3. The teams are intended to support local first responders in major hazardous material and weapons of mass destruction incidents.

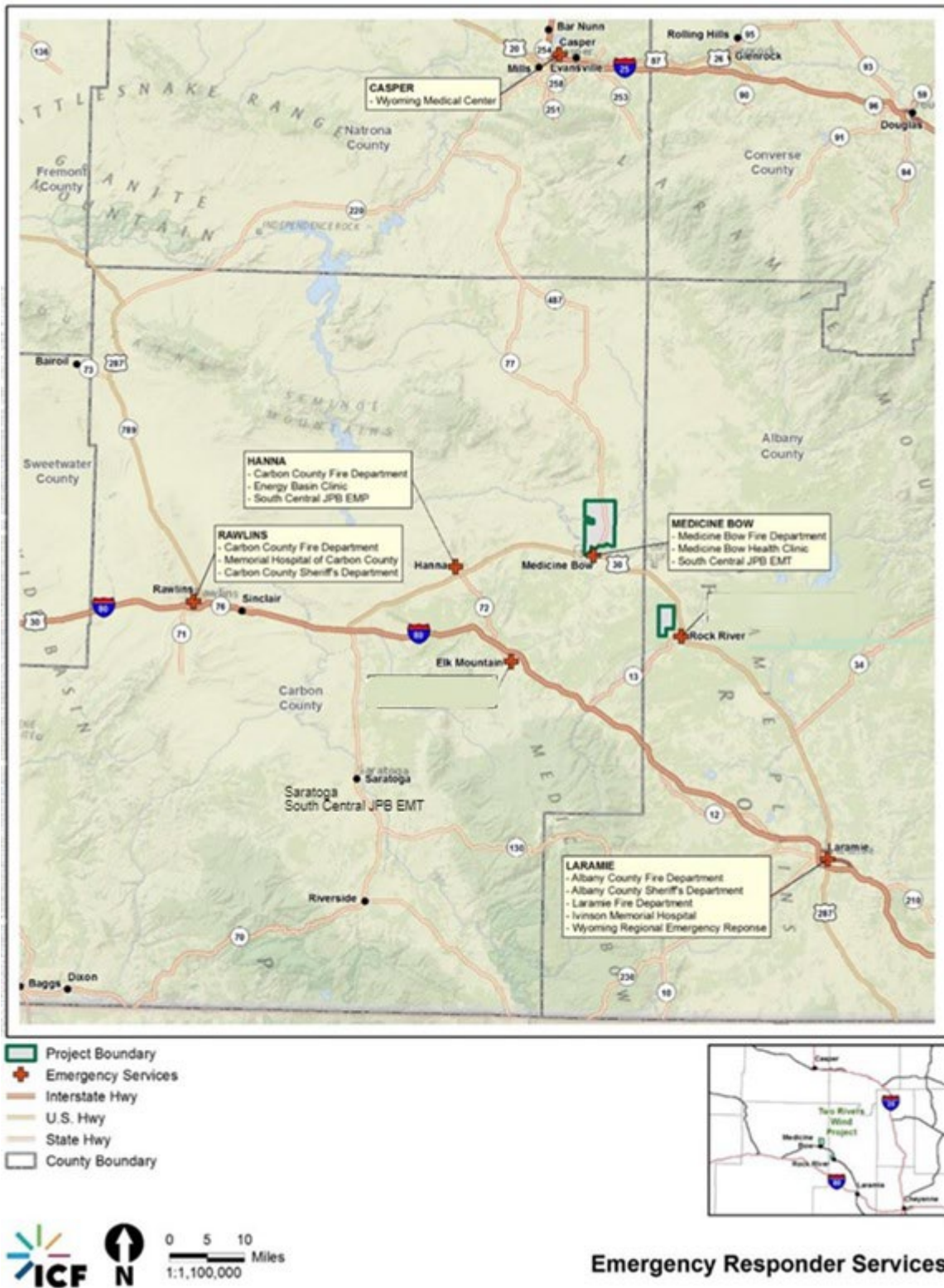
Chapter 6

Emergency Response Provider Locations

6.1 Emergency Services in Project Area

Figure 4 below shows locations of hospitals, health clinics, fire departments, ambulance services, and law enforcement providers in relation to the Project site.

Figure 4 Emergency Responder Service Provider Locations

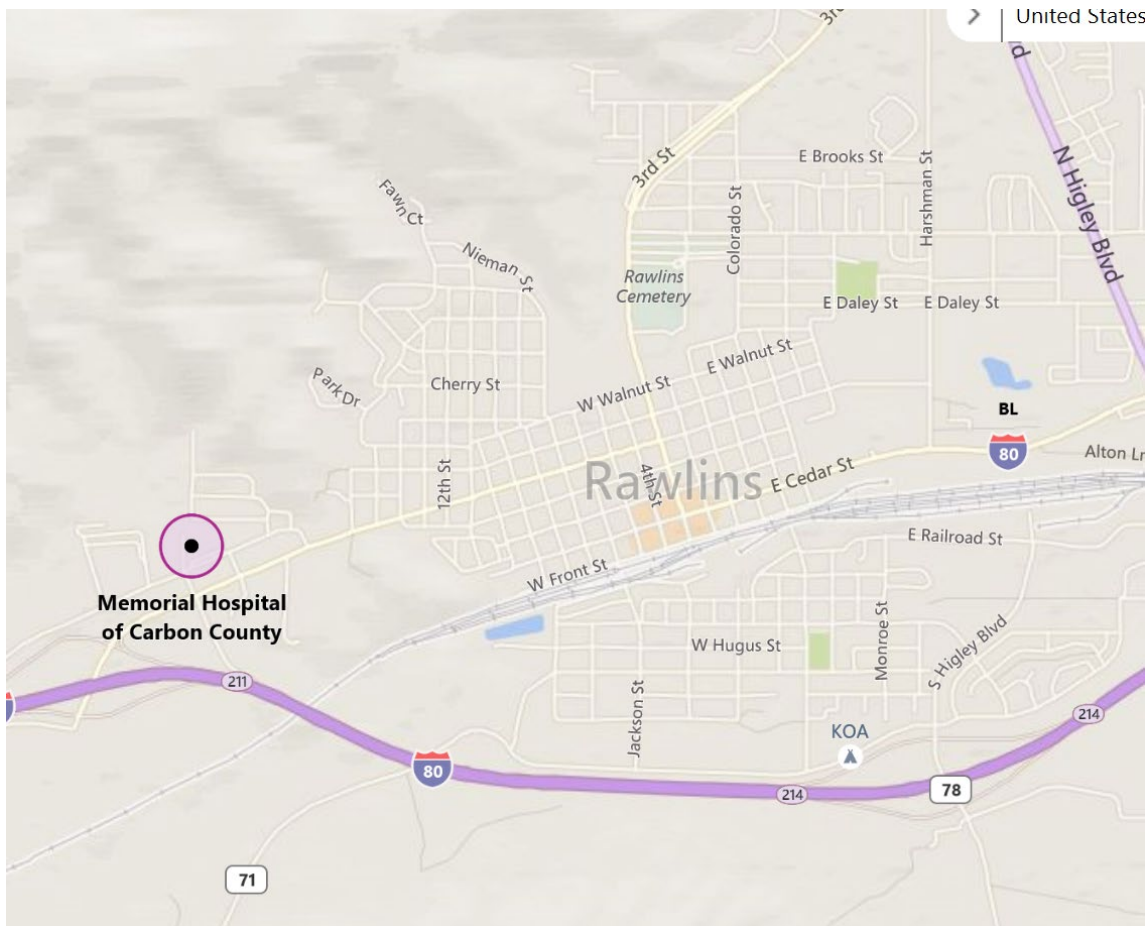


6.2 Memorial Hospital of Carbon County

The Memorial Hospital of Carbon County is located in Rawlins approximately 1 hour from the Project site.

| Hospital | Address | Emergency Hours | Phone |
|------------------------------------|--------------------------------|----------------------|----------------|
| Memorial Hospital of Carbon County | 2221 Elm St, Rawlins, WY 82301 | 24 hrs/7 days a week | (307) 324-2221 |

Figure 5 Location of Memorial Hospital



6.3 Wyoming Medical Center

Wyoming Medical Center (WMC) is located in Casper approximately 1.5 hours from the Project Site.

| Hospital | Address | Emergency Hours | Phone |
|------------------------|---------------------------------|----------------------|----------------|
| Wyoming Medical Center | 1233 E 2nd St, Casper, WY 82601 | 24 hrs/7 days a week | (800) 822-7201 |

Chapter 7

Evaluation of Site and Activity Risks

This section of the ERP outlines potential risks associated with the Project, as well as current and near-term activities. It will continue to be updated throughout the life of the Project.

7.1 Site Safety and Security Controls

The Carbon County Zoning Resolution includes health and safety standards related to the design, installation, color, signage, visibility, scenic landscapes, warnings, and exterior climb prevention for wind energy facilities. In an effort to prevent injury and damage to the environment and public and private property, conditions or actions that may put workers, the environment, or the facility at risk have been identified. Two Rivers Wind has taken measures to avoid these conditions, actions to minimize the potential for an incident to occur, and developed procedures to effectively address incidents in a timely manner. Preliminary site planning has considered measures to protect both workers and the general public during construction and operation of the facility, such as fencing and signage.

Throughout the Project site, appropriate signage will be placed in high visibility areas to warn employees and visitors of all potential hazards. Signage locations will include access roads, entrances, roadway intersections, excavation sites, maintenance buildings, and trenches. Additional signage will be placed at the base of all pad-mounted transformers and collector substations to warn of high voltage hazards. Signs would include emergency contact information and direction for emergency aid workers to help in locating specific turbines and facilities. Two Rivers Wind will consult with Carbon County regarding the need for additional signage and specific design standards or restrictions to prohibit impacts to scenic viewsheds.

Additional safety measures will include fencing surrounding excavated foundation holes, electrical collection trenches, unfinished turbine bases, excavations, and other hazards. The fencing will likely be heavy-duty, high-visibility plastic mesh. Security guards, cameras, and/or additional fencing could be used as necessary to protect public health and safety as well as Project facilities. Inspections will be conducted by the Wyoming Occupational Safety and Health Administration (OSHA) department for compliance with federal and state OSHA requirements. The exteriors of all turbines will be unclimbable by design or protected by anti-climbing devices. Any guy wires on land with public access will have visible, reflective tape, flags, or reflectors placed on the anchor points and along the wires up to 15 feet in accordance with Section 5.9 of the Carbon County Zoning Resolution, Section 6.2. BLM also requires that bird diverters be installed on any guy wires located on public land. The following requirements would apply to the installation of diverters on BLM land:

- Diverters must display movement in at least 5 mph wind and must be able to withstand winds above 20 mph;
- Diverters must reflect sunlight;
- Diverters must have 10 hours of luminescence at night;
- Diverters must incorporate UV reflection for fog and lowlight conditions; and

- Diverters must have at least 18-square inches per single diverter design.

In addition, guy wire anchor points and the base of the structure will be fenced to preclude big game and the public from getting entangled. Options include fencing each area separately of fencing the entire area.

7.2 Occupational Hazards

As with any construction project, construction and operations workers are subject to risk of injury or fatality from physical hazards. Such hazards can be minimized when workers adhere to safety standards as set by the U.S. Department of Labor's OSHA. Occupational health and safety is regulated at the federal level through OSHA (29 U.S. Code [USC] 651 *et seq.*). Wyoming has additional statutes and regulations that build on the federal law including the Wyoming Safety Act. The State of Wyoming cannot enact standards that are stricter than those regulations set forth by OSHA under federal regulations; however, they can adopt standards for industries not covered by OSHA (OSHA 2014).

Some of the occupational hazards associated with wind energy projects are similar to those of the heavy construction and electric power industries, while others are unique to wind energy projects such as rotating/spinning equipment. In particular, the hazards of installing and repairing WTGs can be similar to those of buildings, bridges, telephone poles, and other tall structures. The WTG manufacturer will provide an O&M manual and hands-on training sessions that will review system safe operating limits and descriptions, startup and shutdown procedures, alarm response actions, and an emergency procedures plan. On-site training is also available upon request through the State of Wyoming through a free on-site consultation program.

Two Rivers Wind and its contractors will comply with all applicable federal, state, and local safety, health, and environmental laws, ordinances, regulations, and standards. These include the following:

- Occupational Safety and Health Act of 1970 (29 USC 651 *et seq.*) and 29 Code of Federal Regulations (CFR) 1910, Occupational Safety and Health Standards;
- Americans with Disabilities Act for accessibility at the O&M building;
- Uniform Fire Code Standards;
- Uniform Building Code;
- National Fire Protection Association, which provides design standards for the requirements of fire protection systems;
- National Institute for Occupational Safety and Health, which requires that safety equipment carry markings, numbers, or certificates of approval for stated standards;
- National Electric Safety Code;
- American Concrete Institute Standards;
- American Institute of Steel Construction Standards;
- American Society for Testing and Materials, and
- National Electric Code.

7.3 Site Risks

Risks associated with the Project (independent of activities) include:

- High altitude;
- Extreme wind and cold temperatures and exposure in winter;
- Hot desert climate in summer;
- Access to remote areas of the Project;
- Limited cell phone coverage; and
- Potential area wildlife interaction.

7.4 Activity Risks

7.4.1 Pre-Construction Activities

The Project is currently completing the final pre-construction design and permitting activities, which include:

- Use of 4-wheel drive vehicles;
- Work in remote areas; and
- Work on-site by personnel who may not be familiar with the Project area.

7.4.2 Construction Activities

Activities associated with construction that will require response planning include:

- Excavation equipment delivery;
- Clearing and grading;
- Road compaction and widening;
- High angle equipment installation;
- Aggregate placement; and
- Access road connections.

Chapter 8

On-Site Emergency Response Requirements

This section describes the resources necessary for the Project to provide immediate on-site response to emergencies. The information provided below considers current and immediately foreseeable activities for the Project and will continue to be updated throughout the life of the Project.

8.1 Staffing

To provide immediate on-site response to emergencies, Two Rivers Wind will have emergency response staff with first-responder training on-site during construction activities and will consider the addition of Emergency Medical Technicians, if necessary. Two Rivers Wind will designate a Safety Coordinator who would be responsible for emergency responses on-site including fire and electrical related emergencies and high angle rescues. The Safety Coordinator will provide training to staff and implement Two Rivers Wind's safety policies included in the Employee Safety Manual. The number of staff and their locations will be identified as the construction work plan is developed and will be adjusted based on the size of the workforce and the type of activities being performed. Current estimates have the construction workforce at 170 workers during peak construction.

Per discussions that took place on November 16, 2022 in Carbon County with emergency response staff, Two Rivers Wind has agreed to providing periodic updates of workforce numbers throughout the construction of the Project to the Carbon County Emergency Management Coordinator.

8.2 Equipment

Rescue and first aid equipment along with automated external defibrillators will be assigned to the appropriate emergency response staff and/or the Safety Coordinator, as well as placed throughout the Project site. All equipment will be easily accessible and clearly marked. Additional safety measures will include fencing surrounding excavated foundation holes, electrical collection trenches, unfinished turbine bases, excavations, and other hazards. The fencing will likely be heavy-duty, high-visibility plastic mesh. Security guards, cameras, and/or additional fencing could be used as necessary to protect public health and safety as well as Project facilities.

Project vehicles will contain the following items in the emergency kit:

- First aid kit;
- Flashlight with extra batteries;
- Sand, salt, or non-clumping cat litter;
- Basic tool kit;
- Tow rope;
- Jumper cables;

- Fire extinguisher; and
- Warning lights or road flares.

8.3 Training

The Safety Coordinator will provide construction staff with basic safety training including first aid and CPR as appropriate. Additional and refresher training on rescue techniques and procedures will be given, as needed, to maintain adequate on-site response measures appropriate to the level of site activity. Two Rivers Wind will also identify opportunities for coordination and training with Carbon County emergency service providers, including high angle rescue training designed specifically for wind turbine rescues.

8.4 Transportation

One emergency helipad will be constructed for the Project, with a preliminary location of latitude 41.973021, longitude -106.185239. The helipad will be located on private land and in a central point in the site to allow for easy access to the pad. The helipad will be approximately 246 by 114 feet and graveled.

This section reviews the communication methods and protocols available that may be used for emergency response. Two Rivers Wind will provide additional detailed information prior to construction.

9.1 Signage

Throughout the Project site, appropriate signage will be placed in high visibility areas to warn employees and visitors of all potential hazards. Locations will include access roads, roadway intersections, excavation sites, maintenance buildings, and trenches. Signs will include emergency contact information and direction for emergency aid workers to help in locating specific turbines and facilities. Inspections will be conducted by the Wyoming OSHA department for compliances with federal and state OSHA requirements. Two Rivers Wind will also install appropriate signage to alert recreation visitors to the potential for increased construction traffic on access routes.

9.2 Project Radio, Landline Telephones, and Cell Phones

Cellphone service in the Project area may be unreliable or limited to specific local carriers. Thus, contractor(s) crews may need to carry or have ready access to satellite phones or have access to a landline phone to ensure that emergency calls (i.e., 911) or other critical calls can be made from the Project site. Crews and individuals not carrying satellite phones will have two-way radio contact with those that do.

9.3 General Emergency Response Protocol

Project staff will alert on-site emergency response personnel immediately in the event of an emergency. Emergency response staff and/or the Safety Coordinator will promptly initiate the appropriate response plan and notify local emergency services if necessary.

9.4 Response Plans

Two Rivers Wind and its Contractor(s) and vendor(s) will develop response plans for potential emergency situations. Plans will be provided to local emergency response agencies upon request and will be updated throughout the life of the Project. Copies of the response plan(s) will be available at multiple locations throughout the Project site. In the event of an emergency, a post-incident review of the plan will be conducted.

9.4.1 Medical Emergencies

Response plans for staff medical emergencies will include, but not limited to, items such as:

- Work-related and nonwork-related injuries;
- Existing medical conditions;
- Terrain and wildlife related emergencies; and
- Weather-related injuries.

9.4.2 Fire or Hazardous Materials Release

Response plans for staff medical emergencies will include, but not limited to, items such as:

- Construction equipment fires;
- Structure fires;
- Wildfires; and
- Hazardous material spills.

9.4.3 Severe Weather and Catastrophic Events

Response plans for staff medical emergencies will include, but not limited to, items such as:

- Severe winter storms and cold temperatures;
- Extreme high temperatures;
- Severe thunderstorm;
- Tornado; and
- Uncontrolled release or explosion from nearby chemical source.

Chapter 10 References

Carbon County. 2015. Carbon County Zoning Resolution of 2015. October 6, 2015.

City of Laramie. 2019. Fire Department. Available: <https://www.cityoflaramie.org/93/Fire>. Accessed February 19, 2019.

Occupational Health and Safety and Health Administration (OSHA). 2019. Wyoming State Plan. Available: <https://www.osha.gov/dcsp/osp/stateprogs/wyoming.html>. Accessed February 19, 2019.

Town of Hanna. 2019. Energy Basin Clinic. Available: <http://hannaheadlight.com/>. Accessed February 19, 2019.

United States Code. 2006. Occupational Safety and Health. Supplement 5, Title 29 - Labor.

Wyoming State Fire Marshal. 2015. Wyoming Fire Service Directory. Available: <http://wsfm.wyo.gov/training/fire-service-directory/wyoming-fire-service-directory>. Accessed January 14, 2016.

Wyoming Statute. 2011. Wyoming Emergency Response Act Title §35-9-151.

Attachment 1

Emergency Response Forms and Checklists

Emergency Action Plan Contacts (template)

Applicable forms and checklists will be developed and distributed by the construction Contractor prior to commencement of construction

*TEMPLATE TO BE UPDATED AND DISTRIBUTED PRIOR TO CONSTRUCTION***TWO RIVERS WIND ENERGY PROJECT**

Field Office: _____ (307) _____

EMERGENCY ACTION PLAN PRIMARY CONTACTS

All incidents and accidents MUST be reported to the Site Foreman or Supervisor immediately!

They will notify the following personnel of the incident:

**FOR A SERIOUS INJURY, ACCIDENT NEEDING EMERGENCY MEDICAL, EXTRACTION, OR LIFE FLIGHT
CALL 911 IMMEDIATELY!****REMEMBER TO COORDINATE ACCESS AND ARRANGE FOR ESCORT FOR EMERGENCY RESPONSE VEHICLES!
BE FAMILIAR WITH THE HELIPAD LOCATIONS AND EMERGENCY MAP!**

| | | |
|-----------------------------------|--|--|
| Onsite Safety Coordinator: | | |
| Onsite First Responder: | | |
| TBD Safety Director: | | |

| Non-Emergency Contacts (M-F 8:00 A.M. - 4:30 P.M.) | | |
|--|---|--|
| Type of Emergency | Public Service Unit | Contact Information |
| Medical Treatment | Memorial Hospital of Carbon County 2221 West Elm Street Rawlins, WY 82301 | 307-324-2221 |
| | Wyoming Medical Center Life Flight 1233 East Second Street Casper, WY 82601 | 800-822-7201 |
| | Classic Air Medical 1300 Airport Rd, Rawlins, WY 82301, United States | 800-444-9220 |
| Police Services and Protection County Sheriff | Sheriff of Carbon County P.O. Box 190 415 West Pine Street Rawlins, WY 82301 | Alex Bakken 307-920-1883 (Cell) 307-328-7714 (Office) |
| Highway Safety Division P Supervisor – Caleb Hobbs | Wyoming Highway Patrol 5300 Bishop Blvd. Cheyenne, WY 82009 | 307-348-7770 |
| Fire Response and Protection | Carbon County Fire Department Fire Warden P.O. Box 754 2712 Murray Street Rawlins, WY 82301 | John Rutherford 307-320-7964 (Cell) |
| Emergency Medical Services Regional EMS Coordination | South Central Wyoming EMS Joint Powers Board Saratoga, WY | Stayton Mosbey 307-710-7559 |
| Hazardous and Explosive Materials Carbon County Fire Department | Carbon County Fire Department Fire Warden P.O. Box 754 2712 Murray Street Rawlins, WY 82301 | John Rutherford 307-320-7964 (Cell) |
| Non-Emergency Contact Carbon County Office of Emergency Management | Carbon County Office of Emergency Management 215 W. Buffalo St. Rawlins, WY 82301 | Lenny Layman 307-328-2680 lennylayman@carbonwy.com |
| Emergency Contact | Carbon County Emergency Operations Center (C4:EOC) | 307-328-7770 C4manager@carbonwy.com |

| | | |
|---|--|--------------|
| Carbon County Emergency Operations Center (C4:EOC) | C4: 1016 West Hugus St. Rawlins, WY 82301 | |
| Public-safety answering point (PSAP) Test (911 Test call) | Notify Carbon, Albany, and Natrona County Sheriffs prior to conducting 911 Test call | 307-324-2776 |

| Construction Management Team Contacts | | | |
|--|---------------------|--------------|--------------|
| Name | Organization | Phone | Title |
| | | | |
| | | | |
| | | | |
| | | | |
| | | | |
| | | | |
| | | | |
| | | | |
| | | | |
| | | | |