

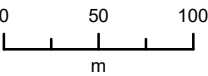
BER Wheatcrest Solar LP
Wheatcrest Solar Facility Connection Project

Proposed Transmission Connection

- Proposed Transmission Connection
- Proposed Substation Site Boundary
- AltaLink 138 kV Transmission Line
- Solar Facility Road Edge
- Surveyed Parcel Boundary
- Unpaved Road



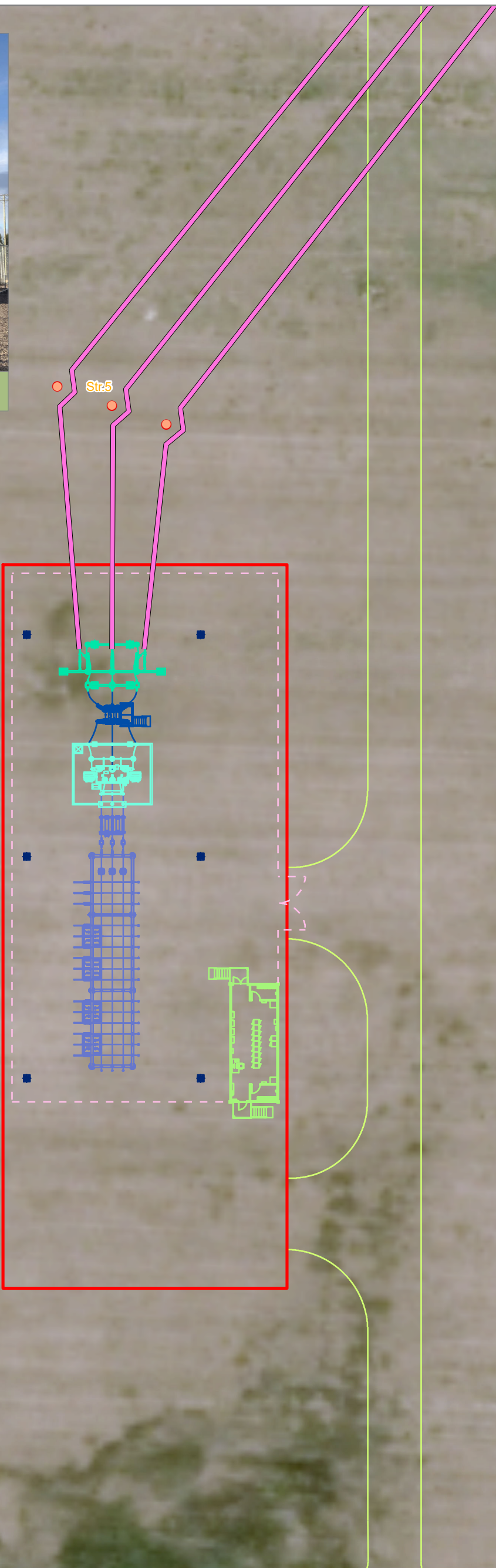
MASKWA ENVIRONMENTAL CONSULTING



1:4,000



Produced For: BER Wheatcrest Solar LP.	Map Creator: C. Jackson
Map Date: November 23, 2021	Map #: BLU20030-005 Rev. 0
<small>This document is created solely for the use of BER Wheatcrest Solar LP. Maskwa Environmental Consulting Ltd. assumes no liability to any other third party for any representations contained in this drawing. Although there is no reason to believe that there are any errors associated with the data used to create this map product, users of this data are advised that errors may be present. Scale of the map is 1:4,000, when printed at 11" by 17". Coordinate System: NAD 1983 UTM Zone 12N Path: S:\Client\Blu\Earth\BLU20030_Wheatcrest\003_Mapping\20211112_NewsletterMaps\</small>	





Substation Components

- 138 kV/34.5 kV Transformer T1
- A-Frame Structure
- Circuit Breaker
- Collector System Feeders F1 to F5
- Control Building
- Disconnect Switch
- Fence
- Shield Wire Tower

BER Wheatcrest Solar LP

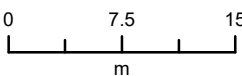
Wheatcrest Solar Facility Connection Project

Proposed Substation Layout

-  Proposed Transmission Structure Location (subject to change)
- Proposed Transmission Conductor Alignment
-  Proposed Substation Site Boundary
- Solar Facility Road Edge



**MASKWA
ENVIRONMENTAL
CONSULTING**



1:500



Produced For: BER Wheatcrest Solar LP.	Map Creator: C. Jackson
Map Date: November 23, 2021	Map #: BLU20030-006 Rev. 0

This document is created solely for the use of BER Wheatcrest Solar LP. Maskwa Environmental Consulting Ltd. assumes no liability to any third party for any inaccuracies contained in this drawing. Although there is no reason to believe that there are any errors associated with the data used to create this map product, users of this data are advised that errors may be present. Scale of the map is 1:500, when printed at 11" by 17". Coordinate System: NAD 1983 UTM Zone 12N

Path: S:\Client\BtuEarth\BLU20030_Wheatcrest003_Mapping\20211112_NewLetter\Maps\