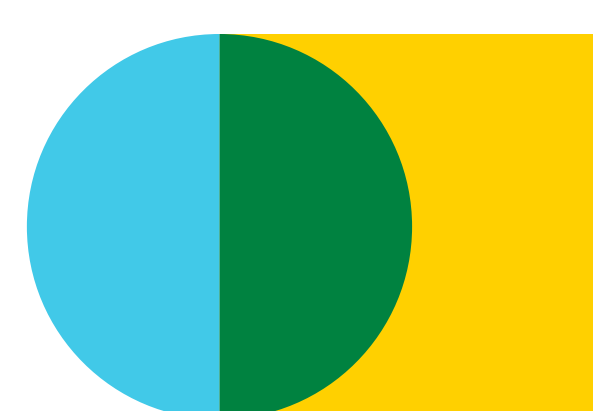


# Welcome to the Two Rivers Open House

Please sign in at the front desk and provide your contact information if you would like to receive Project updates.

We invite you to walk around and look at the displays.  
If you have questions or comments, please ask one of our representatives.

*Thank you for attending!*



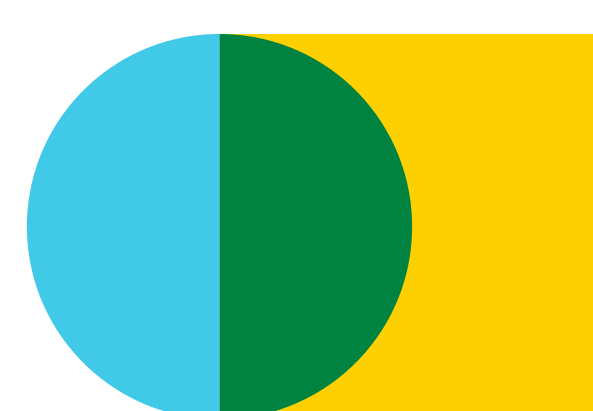
Clearway

# Welcome to the Two Rivers Open House

Please sign in at the front desk and provide your contact information if you would like to receive Project updates.

We invite you to walk around and look at the displays.  
If you have questions or comments, please ask one of our representatives.

*Thank you for attending!*



Clearway

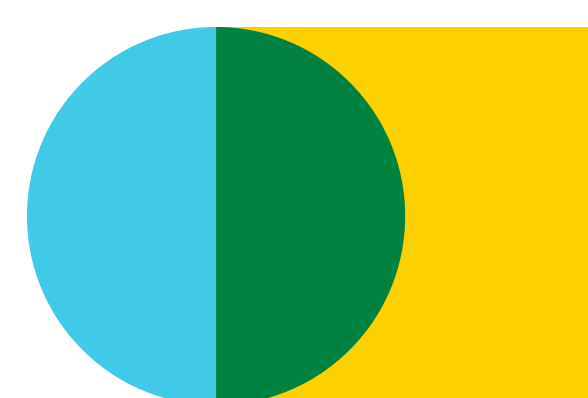
## Two Rivers Wind Project

# Project Background

Development work has been underway on the Two Rivers Wind Project since 2017.

BluEarth Renewables first began outreach efforts on this Project in 2018, after acquiring the project. Over the last year, we have conducted pre-construction wildlife surveys that are consistent with the U.S. Fish and Wildlife Service Land-based Wind Energy Guidelines and Wyoming Game & Fish recommendations. We have also been meeting with the Wyoming Game and Fish Department and U.S. Fish and Wildlife Service to determine the level of baseline survey information needed. The Project is currently engaged in a NEPA Environmental Assessment with the U.S. Department of Interior Bureau of Land Management.

The project is a joint venture partnership between BluEarth Renewables US LLC and Clearway Energy Group LLC.



# Clearway

The Project is being developed by Two Rivers Wind LLC, a joint venture partnership between BluEarth Renewables US LLC and Clearway Energy Group LLC.

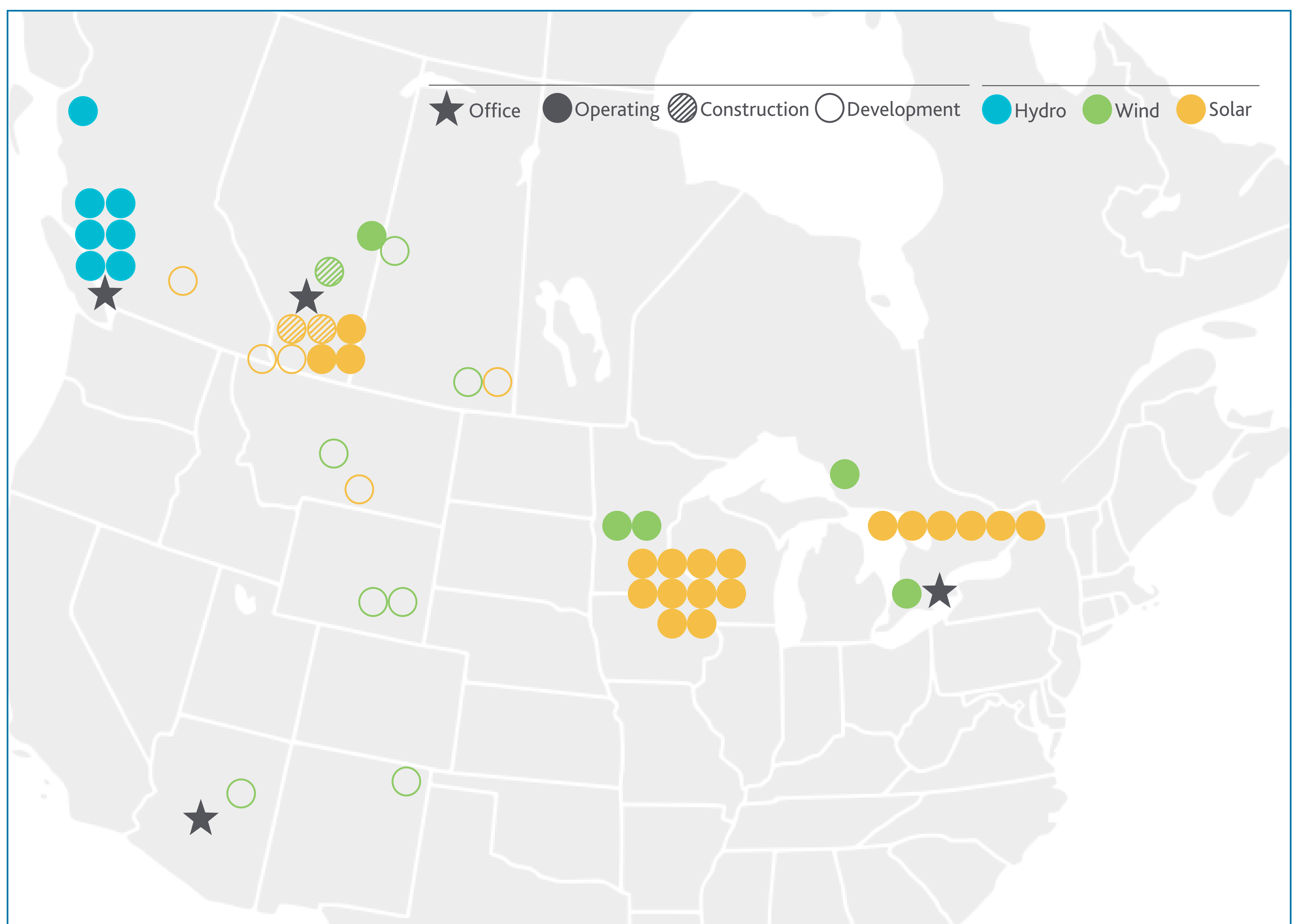


# About BluEarth Renewables

BluEarth Renewables brings together extraordinary people with the power to change the future™ by delivering renewable energy to the power grid every day. We are a leading, independent, power producer that acquires, develops, builds, owns, and operates wind, hydro and solar facilities across North America. Our portfolio includes 658 MW (556 MW net) of nameplate capacity in operation, under construction and contracted pre-construction and over 2.5 GW under development.

For more information, visit [blueearthrenewables.com](http://blueearthrenewables.com)

## Our Portfolio



BluEarth Renewables US LLC is the US affiliate of BluEarth Renewables Inc.

*Power to Change* THE FUTURE™



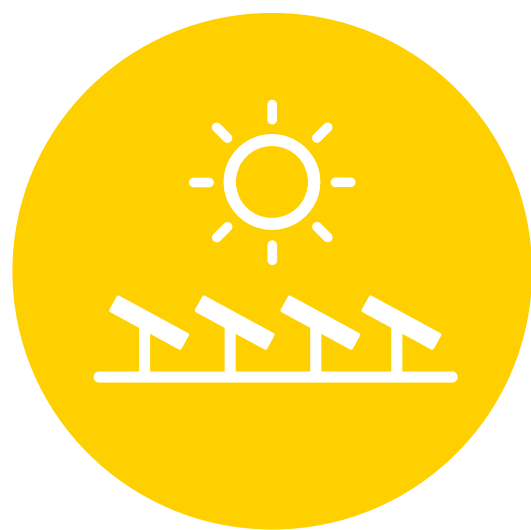
# About Clearway Energy Group

Clearway Energy Group LLC (“Clearway”) is leading the transition to a world powered by clean energy. Along with our public affiliate Clearway Energy, Inc., we own and operate over 7.5 gigawatts of renewable and conventional energy assets across the country. As we develop a nationwide pipeline of new renewable energy projects for the future, Clearway’s 5 gigawatts of wind, solar, and energy storage assets offset the equivalent of nearly 8.8 million metric tons of carbon emissions for our customers today. Clearway Energy Group is headquartered in San Francisco, CA with offices in Carlsbad, CA; Scottsdale, AZ; Houston, TX; and Princeton, NJ. For more information, visit [clearwayenergygroup.com](https://clearwayenergygroup.com).

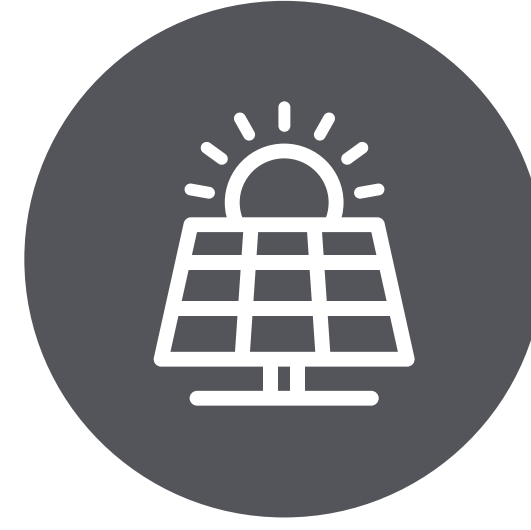
## Our Footprint



3.5 GW Wind



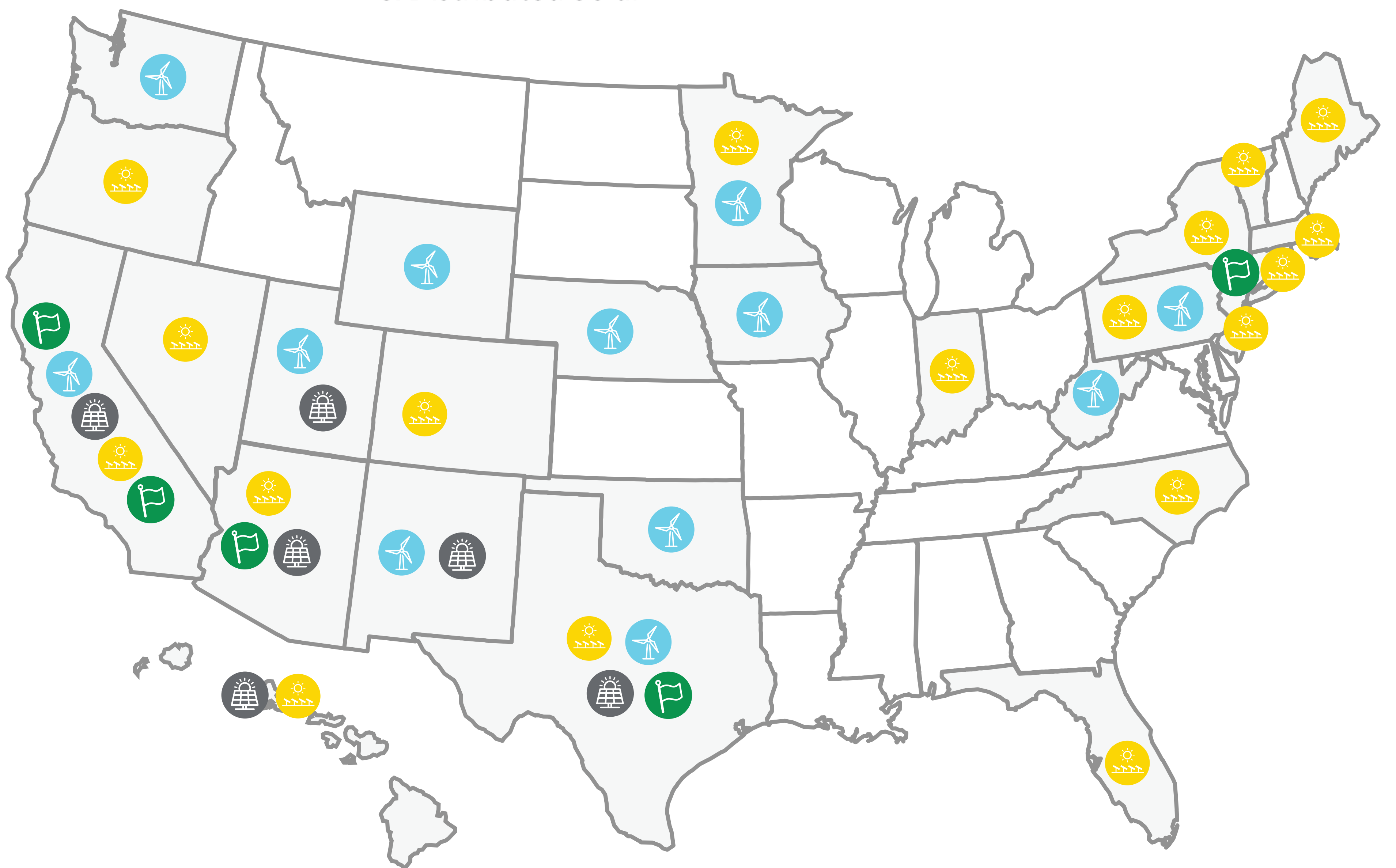
300 MW Community  
& Distributed Solar



1.3 GW Solar



5 Main Offices





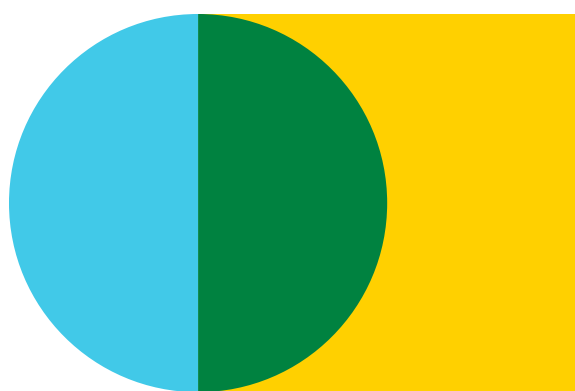
# Two Rivers Wind Project

## Project Description

We are planning to submit local and state permit applications required to construct and operate the Two Rivers Wind Project across a private ranch in Carbon County, Wyoming. Permits required for the project include a Conditional Use Permit from the County and a Industrial Siting Council (ISC) Permit from the Wyoming Department of Environmental Quality.

Project Details	
Location	North of Highway 30 and Medicine Bow
Point of Interconnection	Freezeout substation
Project Area	Approximately 15,600 acres
Expected Capacity	280 MW
Preliminary Site Plan	Up to 61 wind turbines on Two Rivers Ranch

\*Estimated



Clearway

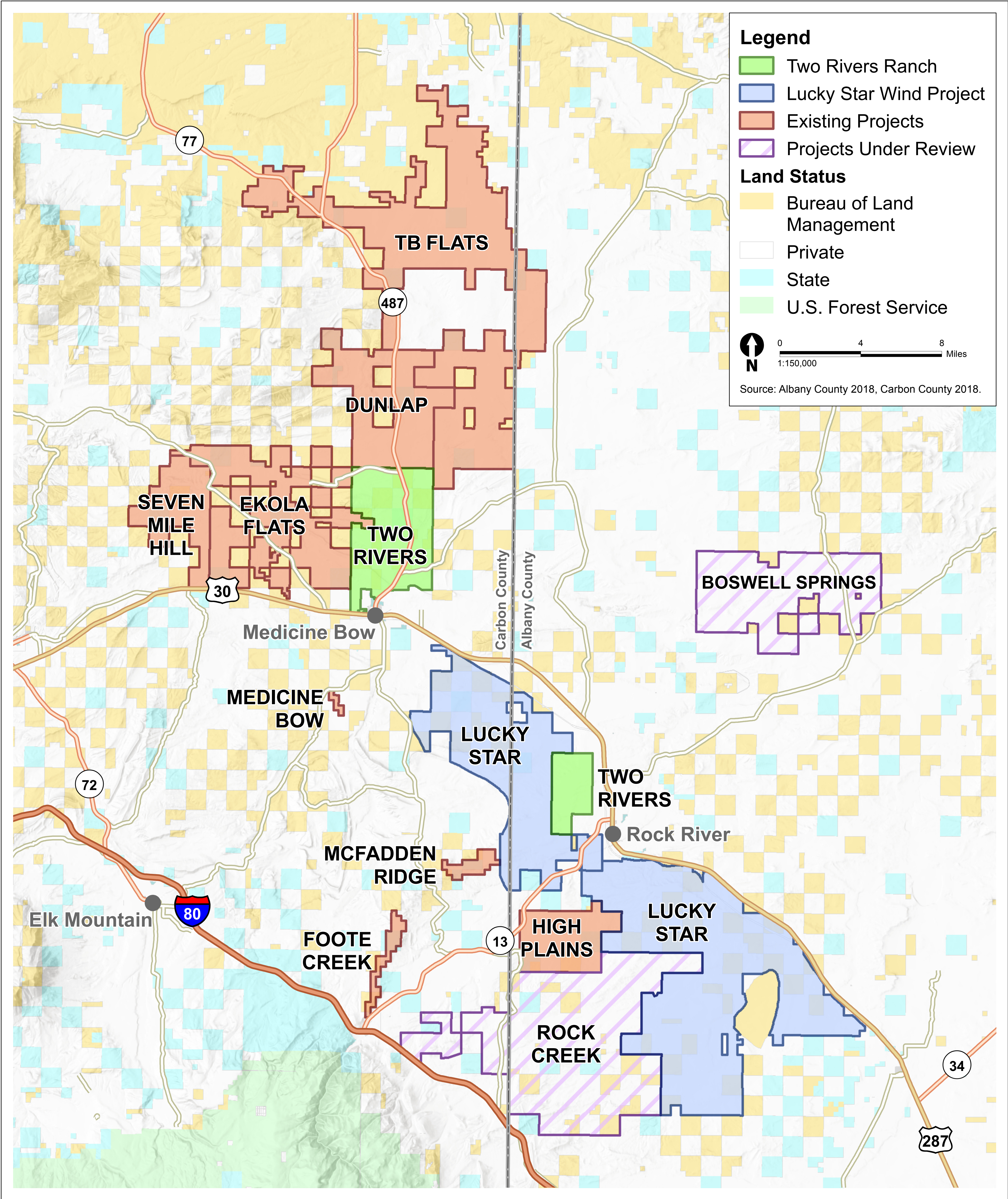
The Project is being developed by Two Rivers Wind LLC, a joint venture partnership between BluEarth Renewables US LLC and Clearway Energy Group LLC.



# Regional Overview

An overview of existing and proposed wind energy projects in the region.

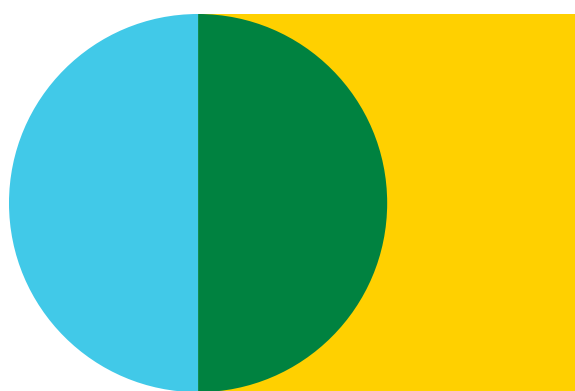
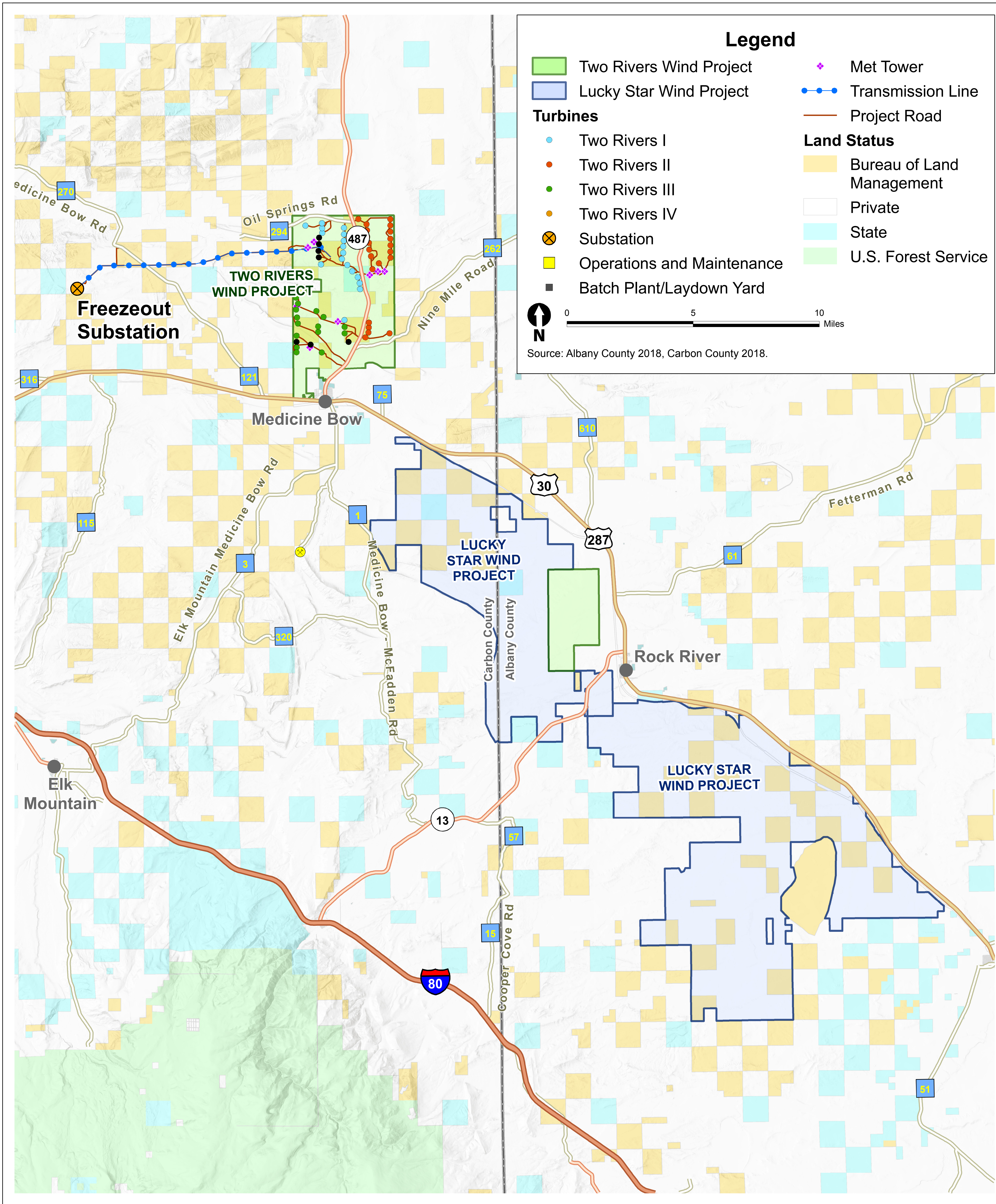
An overview of existing and proposed wind energy projects in the region.





# Two Rivers Wind Project

## Project Plans



# Clearway

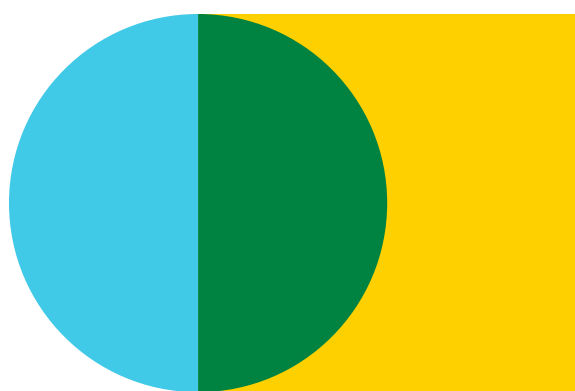
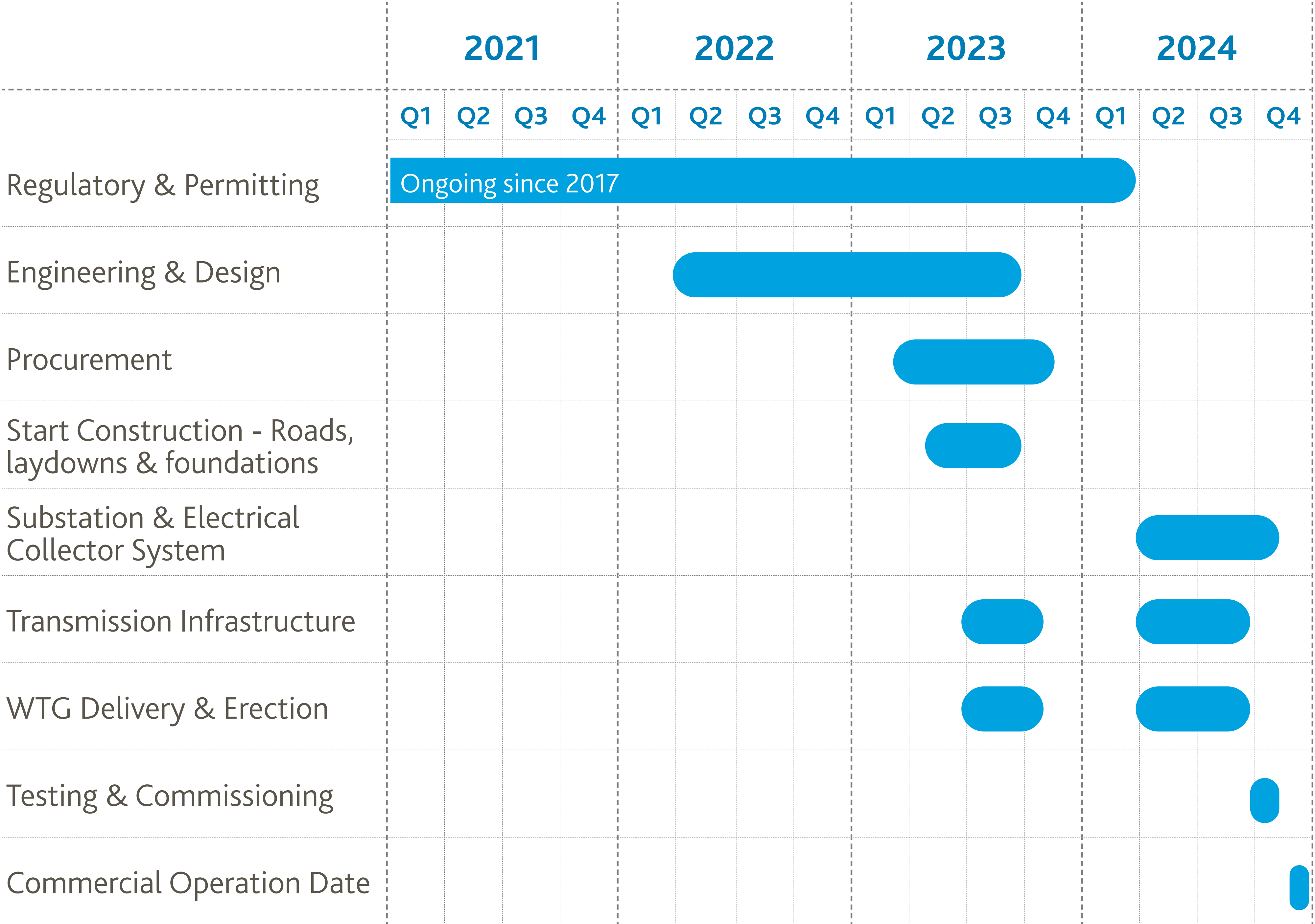
The Project is being developed by Two Rivers Wind LLC, a joint venture partnership between BluEarth Renewables US LLC and Clearway Energy Group LLC.



# Two Rivers Wind Project

## Construction Schedule

Construction would begin with road improvements, road construction, and geotechnical investigations and would be followed by construction of foundations, the electric collection systems, and installation of wind turbine generators. The preliminary site plan consists of two substations, electrical collector systems and roads, and a 230-345 kv transmission line to the point of interconnection.



Clearway

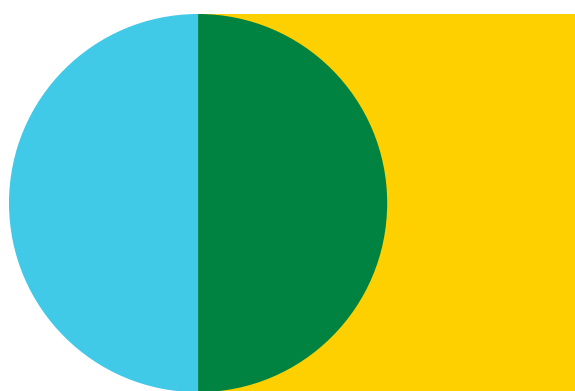
The Project is being developed by Two Rivers Wind LLC, a joint venture partnership between BluEarth Renewables US LLC and Clearway Energy Group LLC.

# Two Rivers Wind Project

## Community Benefits

The Two Rivers Wind Project will benefit the local community through additional long-term tax revenue, employment during construction and operations, and boosts to the local economy with the procurements of goods and services.

	Two Rivers Wind Project
Fiscal Benefits & Tax Revenue	
Cost of Construction	\$485 million
Material Cost	\$275 million
Local & State Sales Taxes	\$14 million
Lifetime Property Tax	\$61 million
Wind Energy Production Tax	\$30 million over 30-year project life
Employment Benefits	
Construction Employment	Up to 170
Average Monthly Wage (Construction)	\$3,800 / worker
Operations Employment	Up to 10
Average Monthly Wage (Operations)	\$3,360 / worker



Clearway

The Project is being developed by Two Rivers Wind LLC, a joint venture partnership between BluEarth Renewables US LLC and Clearway Energy Group LLC.



# Two Rivers Wind Project

## Permits & Coordination

We are actively coordinating with local, state, and federal authorities to minimize any environmental impact that may come as a result of construction and operation of the Project, to obtain the appropriate environmental permits, and to develop species-specific survey and conservation plans, as necessary.

Some of the following items are required, and some are voluntary commitments worked on in coordination with federal, state, and local authorities:

- Carbon County Conditional Use Permit for a Wind Energy Conversion System
- County Road Use Agreements
- Wyoming Department of Environmental Quality, Industrial Siting Council Section 109 Permit
- Monitoring Plan for Wyoming Game and Fish Department
- Bird and Bat Conservation Strategy
- Pre-Construction Permits (e.g. Wyoming Department of Environmental Quality Large Construction General Permit)
- Eagle Conservation Plan and Eagle Take Permit from U.S. Fish and Wildlife Service
- US Army Corps of Engineers Clean Water Act Section 404 Permit
- Bureau of Land Management - Statutory Right of Way Grant



# Clearway

The Project is being developed by Two Rivers Wind LLC, a joint venture partnership between BluEarth Renewables US LLC and Clearway Energy Group LLC.



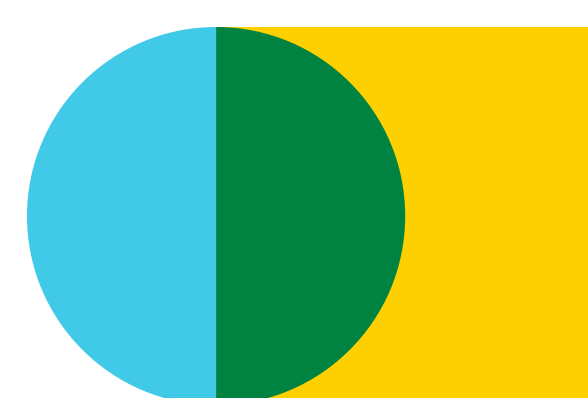
# Two Rivers Wind Project

## Environmental Studies

Pre-construction wildlife surveys have been conducted consistent with the U.S. Fish and Wildlife Service Land-based Wind Energy Guidelines. We are coordinating extensively with state and federal environmental agencies to gather all necessary baseline data to permit the project. Meetings with the Wyoming Game and Fish Department and U.S. Fish and Wildlife Service have been initiated to determine the level of baseline survey information needed and coordination will continue.

The following environmental studies have been completed, are currently underway, or are planned to be completed for the Project:

- Site Characterization – Completed November 2018
- Ecological Site Description Mapping – Completed 2018
- Cultural Resource Surveys – Completed 2019
- White Tailed Prairie Dog Colony Mapping – Completed 2019
- Wetland/Waters of the U.S. Delineations – Completed 2019
- Sensitive Wildlife Species Surveys – Completed 2019
- Avian Use/Eagle Point Count Surveys – Completed 2020
- Raptor Nest Surveys – Completed 2020
- Eagle Activity/Flight Path – Completed 2020
- Sage Grouse Lek Surveys – Completed 2020
- Bat Acoustic Monitoring – Completed 2020
- Big Game Fixed Routes – Completed 2020
- Erosion Potential Assessment – anticipated completion 2022



# Clearway

The Project is being developed by Two Rivers Wind LLC, a joint venture partnership between BluEarth Renewables US LLC and Clearway Energy Group LLC.



## Project Decommissioning

At the end of the Project life, the site will be decommissioned and reclaimed based on industry standards and best practices.

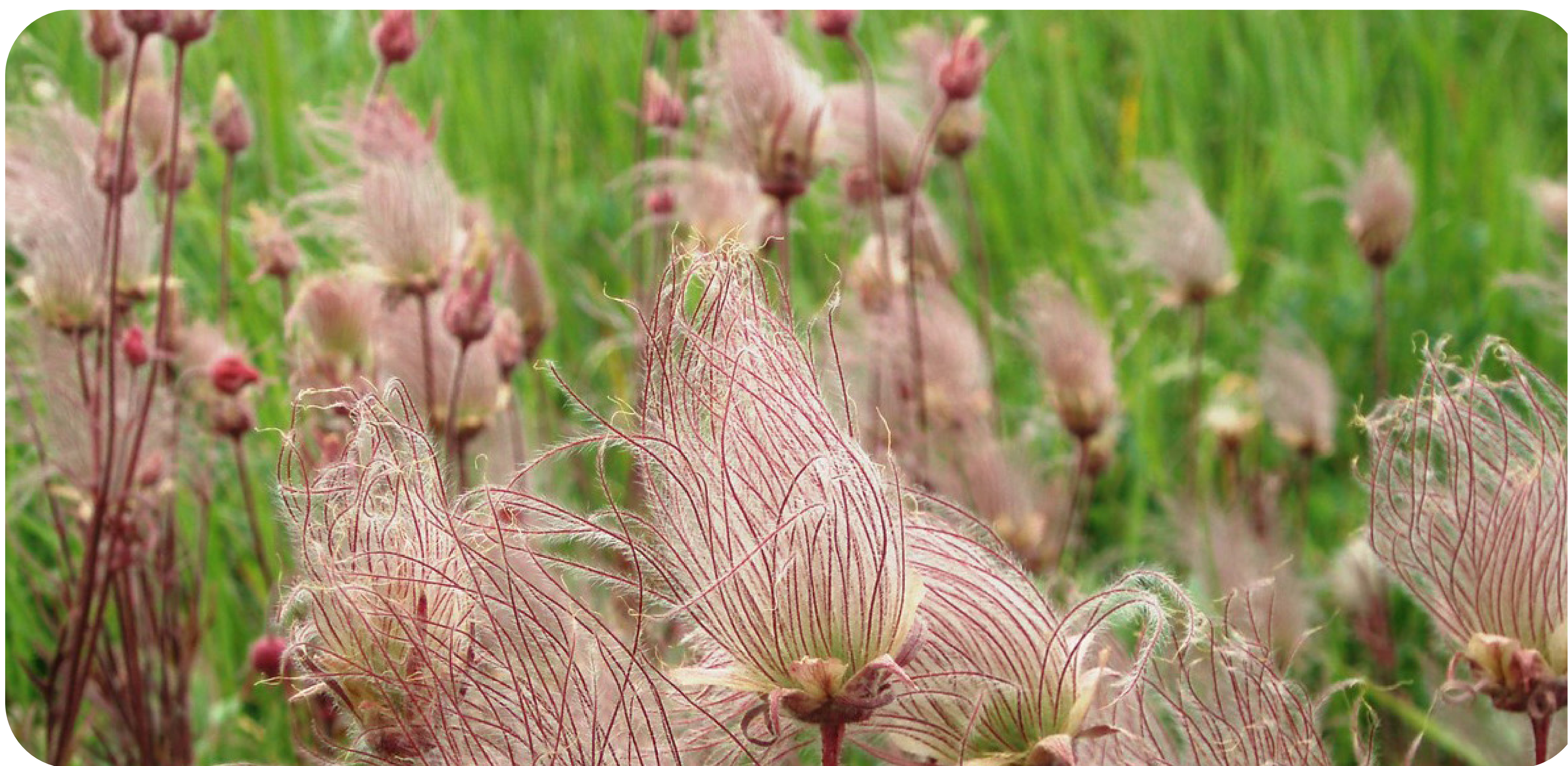
### Decommissioning

- Wind turbine removal - disconnected, dismantled and removed from site
- Substation removal - components disconnected, dismantled and removed from site
- Concrete foundations (wind turbine pads, crane pads, substation) removed
- Overhead electrical cables and support structures removed and taken off site
- Underground cables removed
- Roads to be decommissioned and gravel removed\*
- Operations and maintenance building to be removed\*
- Gates and cattle guards to be removed, fence replacement\*

### Reclamation

- Roads, turnarounds, crane pads and foundations
- Decompaction of soil
- Filling voids and excavations
- Contouring of land to match pre-construction landscape
- Reseeding with appropriate seed mix as defined by appropriate governing body

\* Unless requested by landowner to be left in place

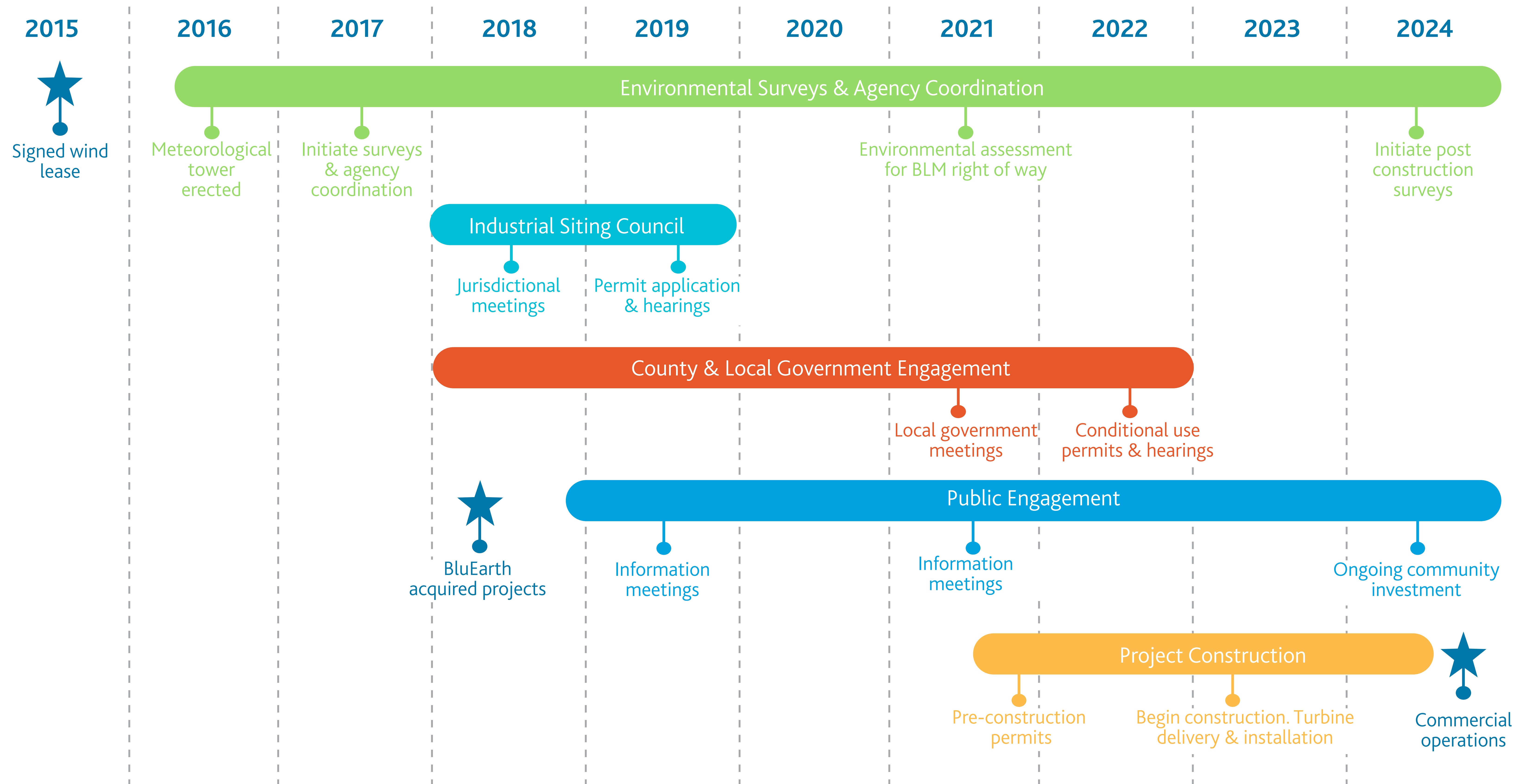


# Clearway

The Project is being developed by Two Rivers Wind LLC, a joint venture partnership between BluEarth Renewables US LLC and Clearway Energy Group LLC.



## Project Timeline





# *Thank you for attending!*

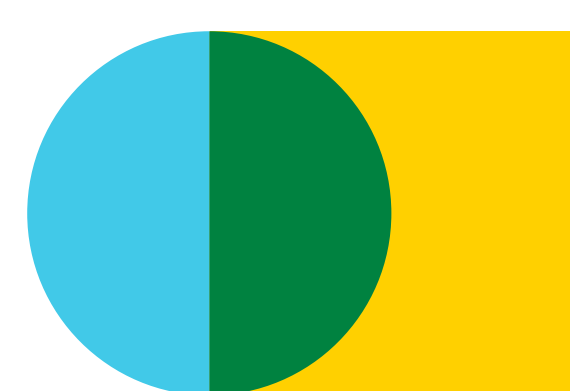
Please fill out a comment form and provide your feedback on the proposed projects.

If you would like to receive updates, please provide us with your name and contact information.

[bluearthrenewables.com/tworivers](http://bluearthrenewables.com/tworivers)

[projects@bluearth.ca](mailto:projects@bluearth.ca)

1.844.214.2578



Clearway