

# **BER** **Hand Hills Wind LP** Hand Hills Wind Project Connection

## **Detail Map Series Index**

### **Legend**

- Approved Hand Hills Wind Project Substation Location
- Preferred Transmission Line
- Alternate Transmission Line
- Detail Map Sheet Frame
- Retired Detail Map Sheet Frame
- - - Existing ATCO 72 kV Transmission Line
- - - Existing ATCO 144 kV Transmission Line

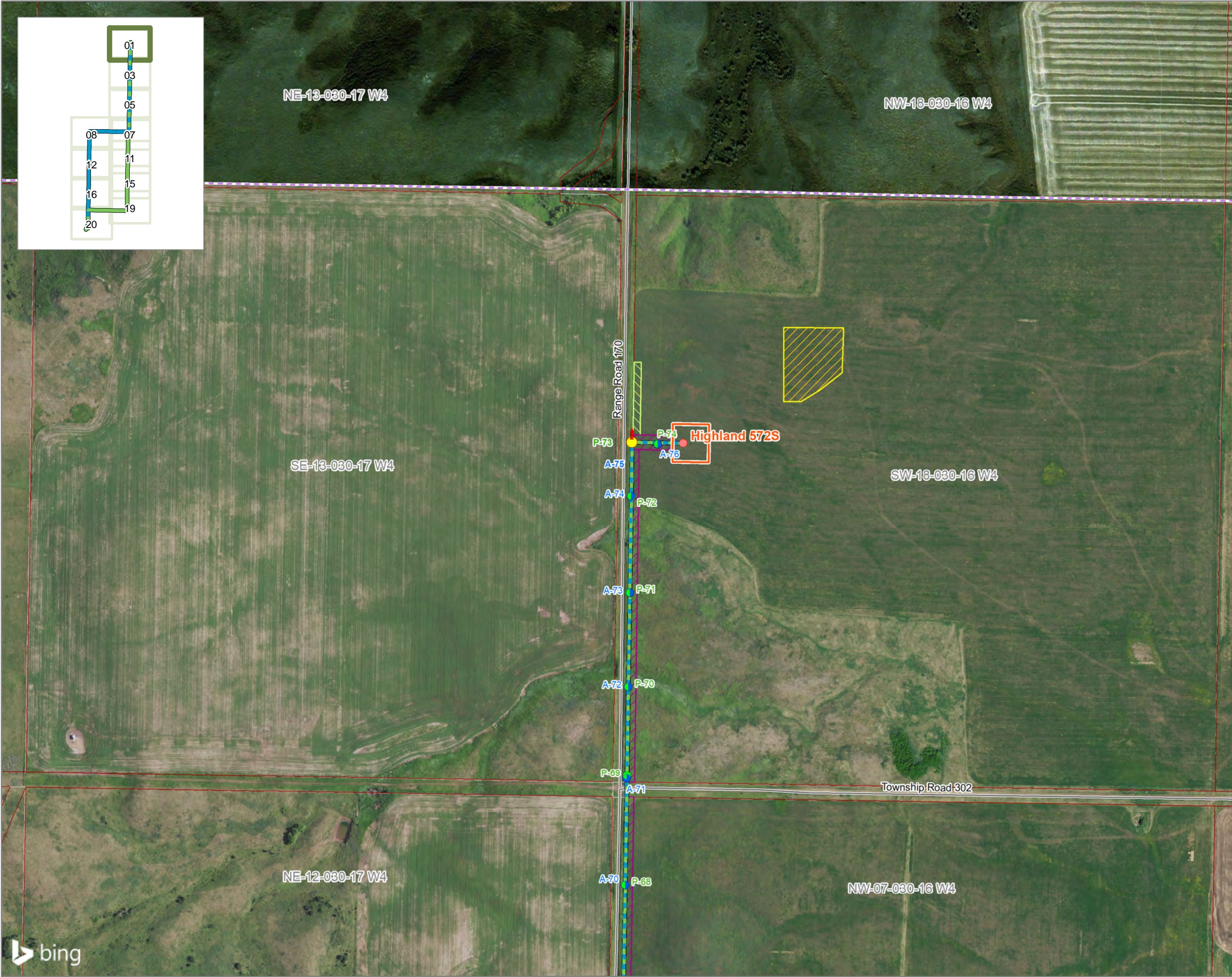
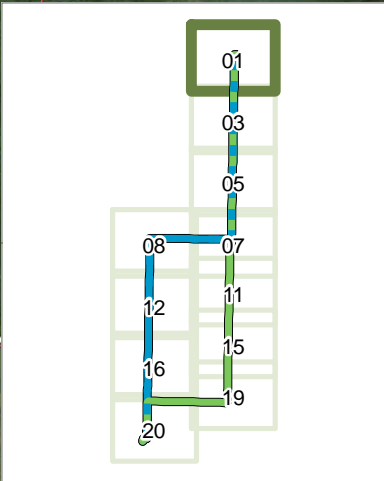


**MASKWA  
 ENVIRONMENTAL  
 CONSULTING**

0 0.5 1  
 km 1:50,000 N

Produced For: BER Hand Hills Wind LP  
 Produced By: Maskwa Environmental Consulting Ltd.  
 Map Date: August 25, 2021  
 Revision #: 0  
 Map Creator: W. Meinen  
 Map #: BLU20021-020  
This document is created solely for the use of BER Hand Hills Wind LP. Maskwa Environmental Consulting Ltd. assumes no liability to any other third party for any representations contained in this drawing. Although there is no reason to believe that there are any errors associated with the data used to create this map product, users of this data are advised that errors may be present. Scale of the map is 1:50,000, when printed at 8.5" by 11". Coordinate System: NAD 1983 UTM Zone 12N  
 Document Path:  
 C:\Client\BLU\BLU20021\_HandHills\003\_Mapping\20210805\_EngagementMapping\_R20





**BER**  
**Hand Hills Wind LP**

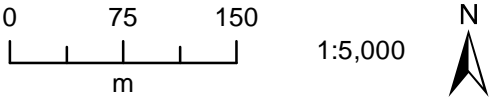
Hand Hills Wind Connection Project

**Potential Route**  
**Alignment Details**  
**Sheet 01**

- Legend**
- Preferred Transmission Line
  - Alternate Transmission Line
  - Tangent Structure - Preferred Route
  - Tangent Structure - Alternate Route
  - A-Frame
  - Dead-end Structure
  - Guy Anchor
  - Approved Hand Hills Wind Project Substation Boundary
  - Laydown Area
  - Permanent Easement
  - Temporary Workspace
  - ATCO 72 kV Transmission Line
  - Unpaved Road
  - Parcel Boundary

**Note:**  
Only one transmission line would be constructed. Temporary and permanent easements will be refined as routing decisions are made.

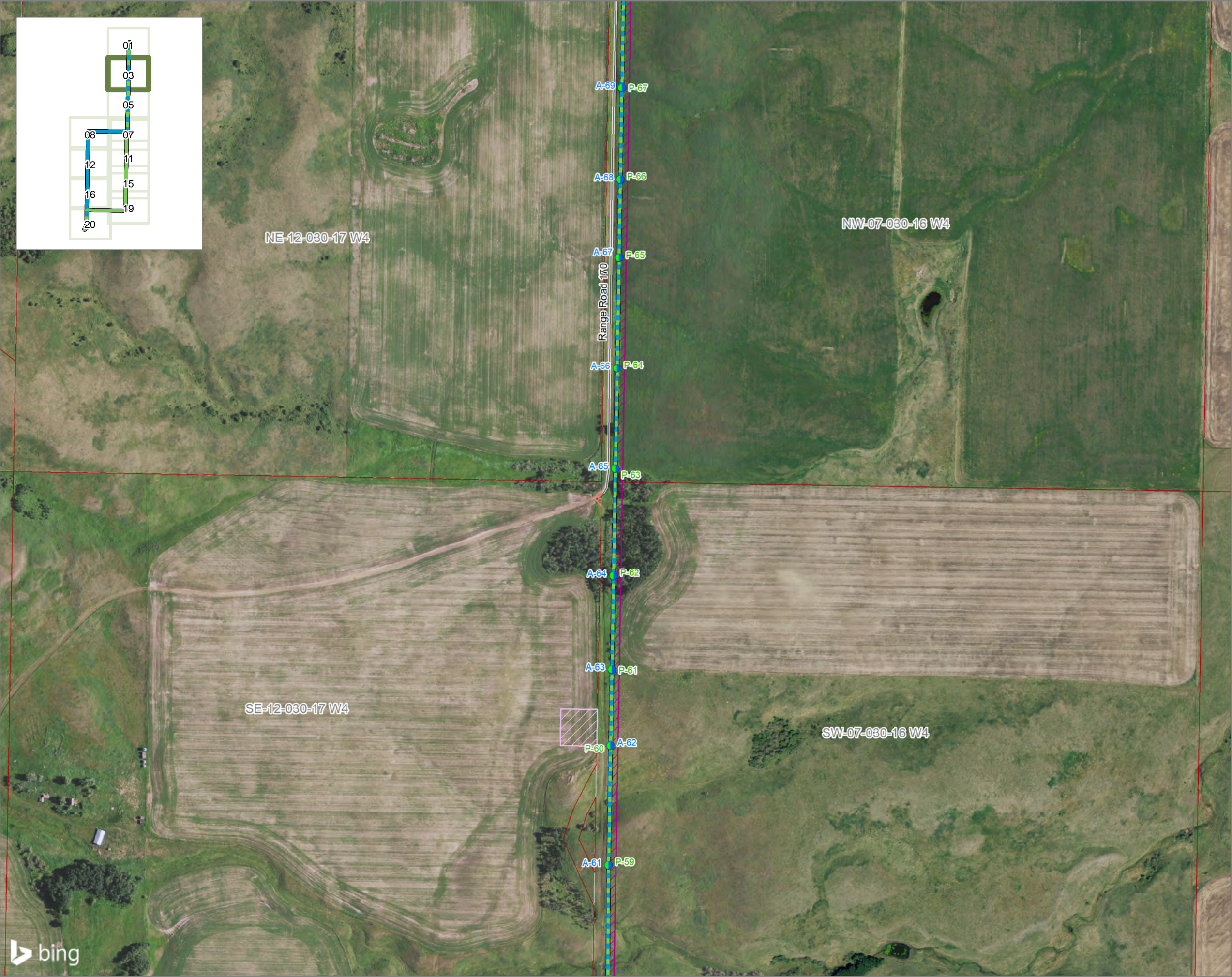
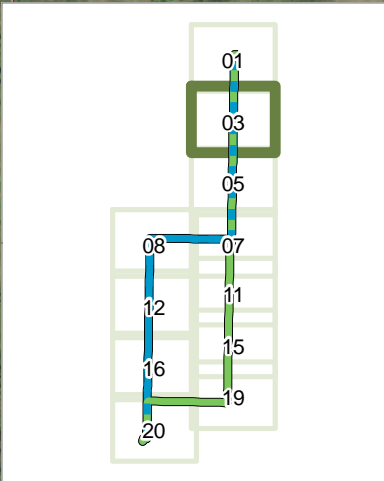
Substation location has shifted south approximately 50 m to reflect more detailed engineering design.



Produced For: BER Hand Hills Wind LP	Revision #: 0
Produced By: Maskwa Environmental Consulting Ltd.	Map Creator: W. Meinen
Map Date: August 30, 2021	Map #: BLU20021-018

This document is created solely for the use of BER Hand Hills Wind LP. Maskwa Environmental Consulting Ltd. assumes no liability to any other third party for any representations contained in this drawing. Although there is no reason to believe that there are any errors associated with the data used to create this map product, users of this data are advised that errors may be present. Scale of the map is 1:5,000, when printed at 11" by 17".  
Coordinate System: NAD 1983 UTM Zone 12N Path:  
S:\Client\BLU\Earth\BLU20021\_HandHills\003\_Mapping\20210805\_EngagementMapping\_R21





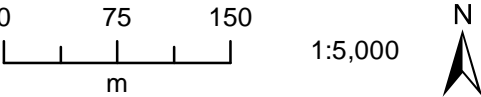
**BER**  
**Hand Hills Wind LP**

Hand Hills Wind Connection Project

**Potential Route**  
**Alignment Details**  
**Sheet 03**

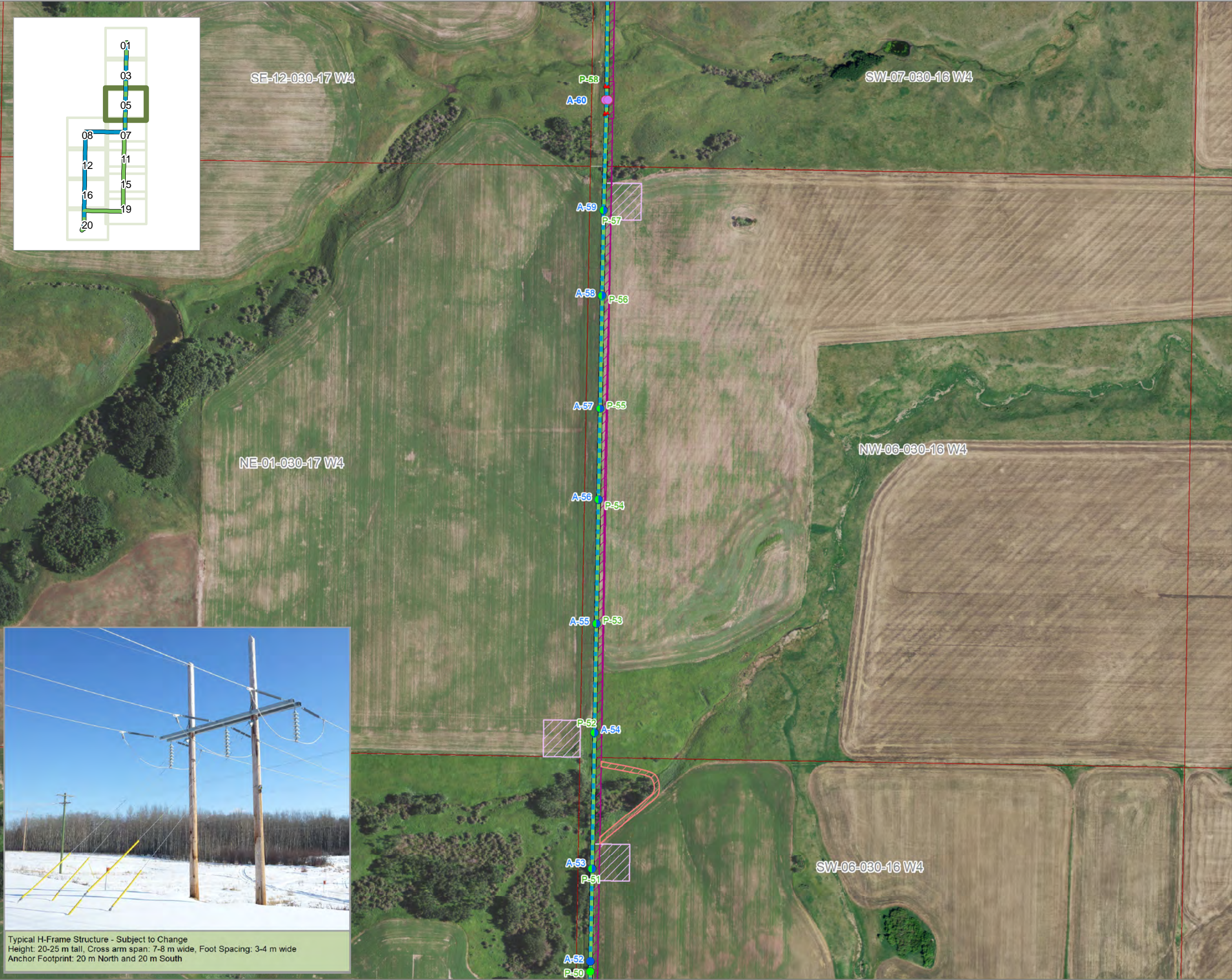
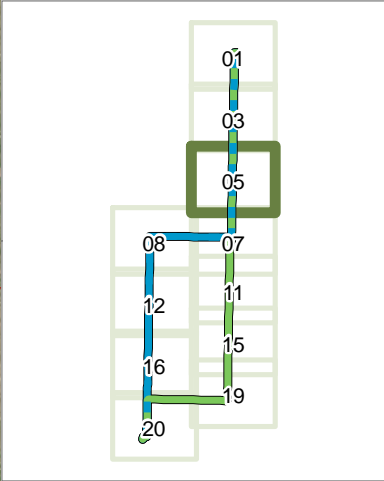
- Legend**
- Preferred Transmission Line
  - Alternate Transmission Line
  - Tangent Structure - Preferred Route
  - Tangent Structure - Alternate Route
  - Off-ROW Access
  - Permanent Easement
  - Turn-around Area
  - Unpaved Road
  - Parcel Boundary

**Note:**  
Only one transmission line would be constructed. Temporary and permanent easements will be refined as routing decisions are made.



Produced For: BER Hand Hills Wind LP	Revision #: 0
Produced By: Maskwa Environmental Consulting Ltd.	Map Creator: W. Meinen
Map Date: August 27, 2021	Map #: BLU20021-018
<small>This document is created solely for the use of BER Hand Hills Wind LP. Maskwa Environmental Consulting Ltd. assumes no liability to any other third party for any representations contained in this drawing. Although there is no reason to believe that there are any errors associated with the data used to create this map product, users of this data are advised that errors may be present. Scale of the map is 1:5,000, when printed at 11" by 17".</small>	
<small>Coordinate System: NAD 1983 UTM Zone 12N Path: S:\Client\BLU\Earth\BLU20021_HandHills\003_Mapping\20210805_EngagementMapping_R2\</small>	
Sheet 03	





Typical H-Frame Structure - Subject to Change  
Height: 20-25 m tall, Cross arm span: 7-8 m wide, Foot Spacing: 3-4 m wide  
Anchor Footprint: 20 m North and 20 m South

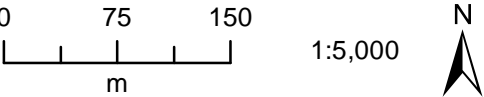
# BER Hand Hills Wind LP

Hand Hills Wind Connection Project

## Potential Route Alignment Details Sheet 05

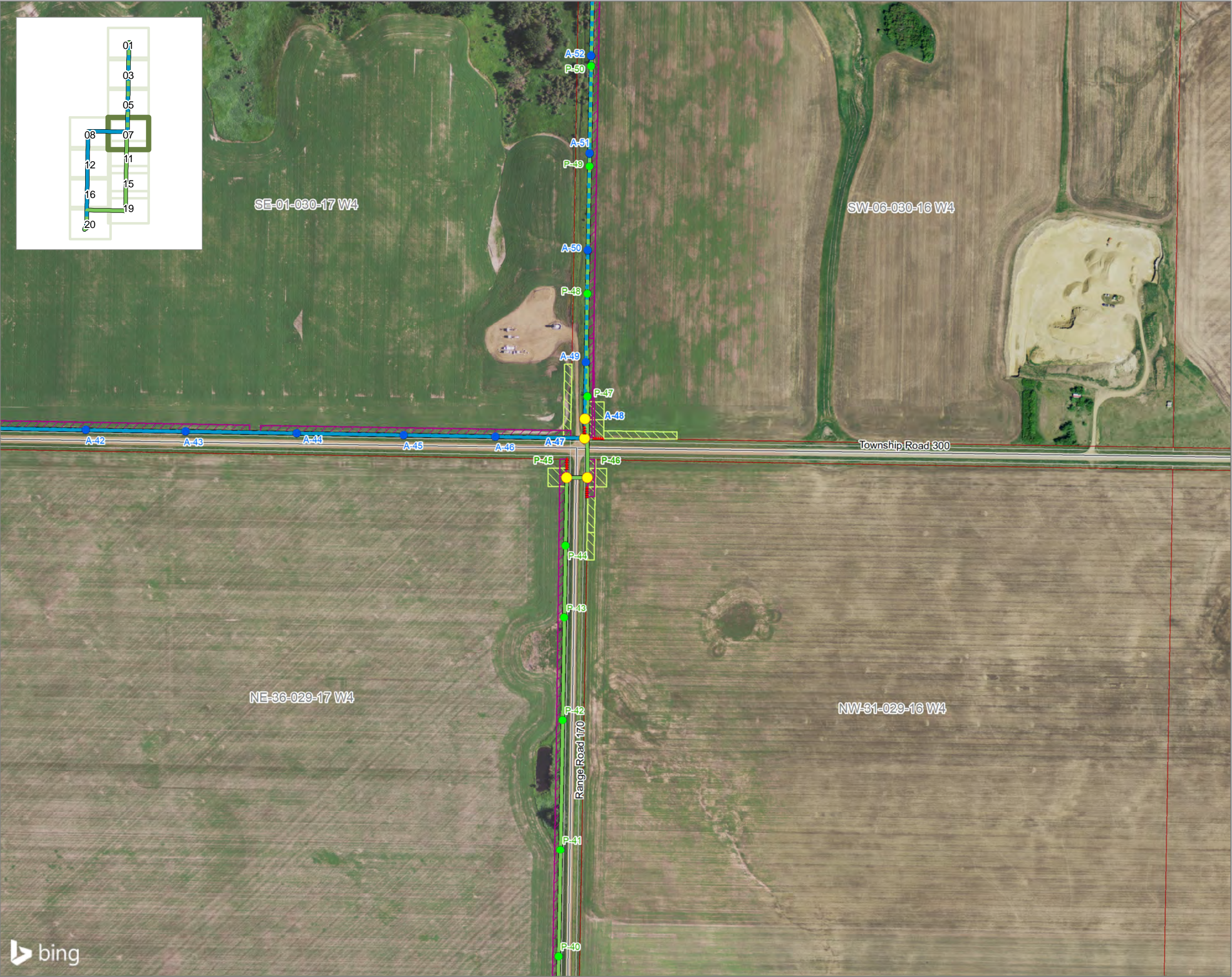
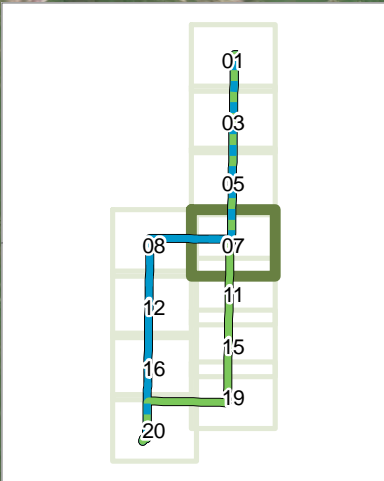
- Legend**
- Preferred Transmission Line
  - Alternate Transmission Line
  - Tangent Structure - Preferred Route
  - Tangent Structure - Alternate Route
  - H-Frame Structure
  - Guy Anchor
  - Off-ROW Access
  - Permanent Easement
  - Turn-around Area
  - Parcel Boundary

**Note:**  
Only one transmission line would be constructed. Temporary and permanent easements will be refined as routing decisions are made.



Produced For: BER Hand Hills Wind LP	Revision #: 0
Produced By: Maskwa Environmental Consulting Ltd.	Map Creator: W. Meinen
Map Date: August 27, 2021	Map #: BLU20021-018
This document is created solely for the use of BER Hand Hills Wind LP. Maskwa Environmental Consulting Ltd. assumes no liability to any other third party for any representations contained in this drawing. Although there is no reason to believe that there are any errors associated with the data used to create this map product, users of this data are advised that errors may be present. Scale of the map is 1:5,000, when printed at 11" by 17". Coordinate System: NAD 1983 UTM Zone 12N Path: S:\Client\BLU\Earth\BLU20021_HandHills\003_Mapping\20210805_EngagementMapping_R2\	
Sheet 05	





# BER Hand Hills Wind LP

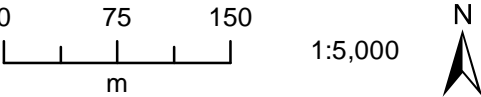
Hand Hills Wind Connection Project

## Potential Route Alignment Details Sheet 07

- Legend**
- Preferred Transmission Line
  - Alternate Transmission Line
  - Tangent Structure - Preferred Route
  - Tangent Structure - Alternate Route
  - Dead-end Structure
  - Guy Anchor
  - Permanent Easement
  - Temporary Workspace
  - Unpaved Road
  - Parcel Boundary

**Note:**  
Only one transmission line would be constructed. Temporary and permanent easements will be refined as routing decisions are made.

Workspace required near the intersection of Township Road 300 and Range Road 170 will vary depending on which route is selected.



Produced For: BER Hand Hills Wind LP	Revision #: 0
Produced By: Maskwa Environmental Consulting Ltd.	Map Creator: W. Meinen
Map Date: August 27, 2021	Map #: BLU20021-018
This document is created solely for the use of BER Hand Hills Wind LP. Maskwa Environmental Consulting Ltd. assumes no liability to any other third party for any representations contained in this drawing. Although there is no reason to believe that there are any errors associated with the data used to create this map product, users of this data are advised that errors may be present. Scale of the map is 1:5,000, when printed at 11" by 17". Coordinate System: NAD 1983 UTM Zone 12N Path: S:\Client\BLU\Earth\BLU20021_HandHills\003_Mapping\20210805_EngagementMapping_R21	
Sheet 07	





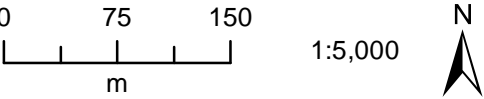
**BER**  
**Hand Hills Wind LP**

Hand Hills Wind Connection Project

**Potential Route**  
**Alignment Details**  
**Sheet 08**

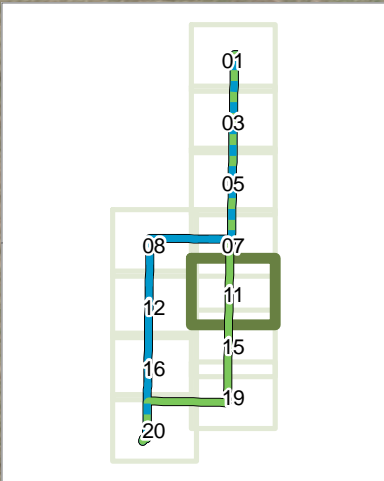
- Legend**
- Alternate Transmission Line
  - Tangent Structure - Alternate Route
  - Dead-end Structure
  - Guy Anchor
  - Permanent Easement
  - Temporary Workspace
  - Unpaved Road
  - Parcel Boundary

**Note:**  
Only one transmission line would be constructed. Temporary and permanent easements will be refined as routing decisions are made.



Produced For: BER Hand Hills Wind LP	Revision #: 0
Produced By: Maskwa Environmental Consulting Ltd.	Map Creator: W. Meinen
Map Date: August 27, 2021	Map #: BLU20021-018
<small>This document is created solely for the use of BER Hand Hills Wind LP. Maskwa Environmental Consulting Ltd. assumes no liability to any other third party for any representations contained in this drawing. Although there is no reason to believe that there are any errors associated with the data used to create this map product, users of this data are advised that errors may be present. Scale of the map is 1:5,000, when printed at 11" by 17". Coordinate System: NAD 1983 UTM Zone 12N Path: S:\Client\BLU\Earth\BLU20021_HandHills\003_Mapping\20210805_EngagementMapping_R2\</small>	
Sheet 08	





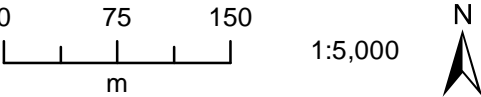
**BER**  
**Hand Hills Wind LP**

Hand Hills Wind Connection Project

**Potential Route**  
**Alignment Details**  
**Sheet 11**

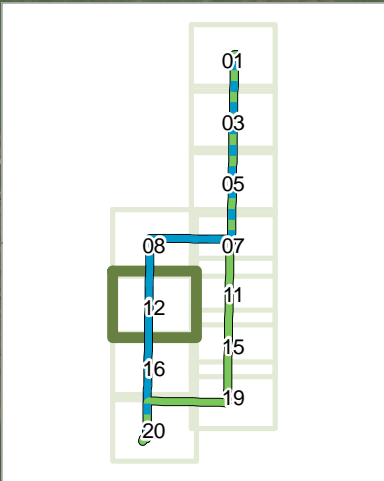
- Legend**
- Preferred Transmission Line
  - Tangent Structure - Preferred Route
  - Permanent Easement
  - Unpaved Road
  - Parcel Boundary

**Note:**  
Only one transmission line would be constructed. Temporary and permanent easements will be refined as routing decisions are made.



Produced For: BER Hand Hills Wind LP	Revision #: 0
Produced By: Maskwa Environmental Consulting Ltd.	Map Creator: W. Meinen
Map Date: August 27, 2021	Map #: BLU20021-018
<small>This document is created solely for the use of BER Hand Hills Wind LP. Maskwa Environmental Consulting Ltd. assumes no liability to any other third party for any representations contained in this drawing. Although there is no reason to believe that there are any errors associated with the data used to create this map product, users of this data are advised that errors may be present. Scale of the map is 1:5,000, when printed at 11" by 17". Coordinate System: NAD 1983 UTM Zone 12N Path: S:\Client\BiuEarth\BLU20021_HandHills\003_Mapping\20210805_EngagementMapping_R21</small>	
Sheet 11	





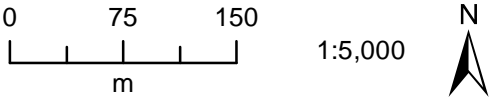
**BER  
Hand Hills Wind LP**

Hand Hills Wind Connection Project

**Potential Route  
Alignment Details  
Sheet 12**

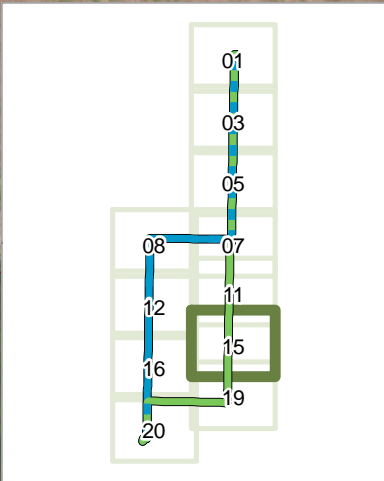
- Legend**
- Alternate Transmission Line
  - Tangent Structure - Alternate Route
  - Permanent Easement
  - Turn-around
  - Unpaved Road
  - Parcel Boundary

**Note:**  
Only one transmission line would be constructed. Temporary and permanent easements will be refined as routing decisions are made.



Produced For: BER Hand Hills Wind LP	Revision #: 0
Produced By: Maskwa Environmental Consulting Ltd.	Map Creator: W. Meinen
Map Date: August 27, 2021	Map #: BLU20021-018





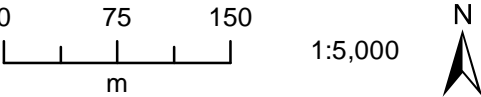
**BER**  
**Hand Hills Wind LP**

Hand Hills Wind Connection Project

**Potential Route**  
**Alignment Details**  
**Sheet 15**

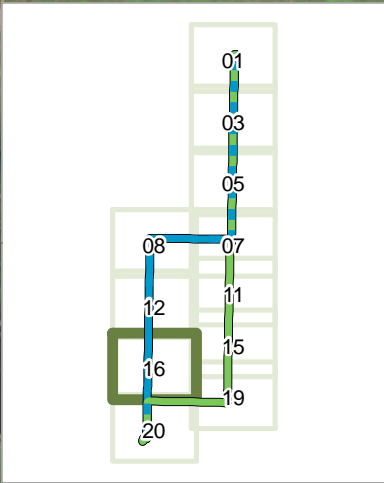
- Legend**
- Preferred Transmission Line
  - Tangent Structure - Preferred Route
  - Permanent Easement
  - Unpaved Road
  - Parcel Boundary

**Note:**  
Only one transmission line would be constructed. Temporary and permanent easements will be refined as routing decisions are made.



Produced For: BER Hand Hills Wind LP	Revision #: 0
Produced By: Maskwa Environmental Consulting Ltd.	Map Creator: W. Meinen
Map Date: August 27, 2021	Map #: BLU20021-018
<small>This document is created solely for the use of BER Hand Hills Wind LP. Maskwa Environmental Consulting Ltd. assumes no liability to any other third party for any representations contained in this drawing. Although there is no reason to believe that there are any errors associated with the data used to create this map product, users of this data are advised that errors may be present. Scale of the map is 1:5,000, when printed at 11" by 17". Coordinate System: NAD 1983 UTM Zone 12N Path: S:\Client\BLU\Earth\BLU20021_HandHills\003_Mapping\20210805_EngagementMapping_R21</small>	
Sheet 15	



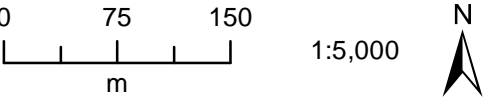


**BER**  
**Hand Hills Wind LP**  
Hand Hills Wind Connection Project

**Potential Route**  
**Alignment Details**  
**Sheet 16**

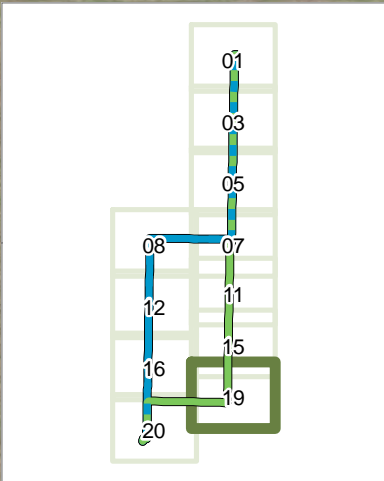
- Legend**
- Alternate Transmission Line
  - Tangent Structure - Alternate Route
  - Permanent Easement
  - Temporary Workspace
  - Unpaved Road
  - Parcel Boundary

**Note:**  
Only one transmission line would be constructed. Temporary and permanent easements will be refined as routing decisions are made.



Produced For: BER Hand Hills Wind LP	Revision #: 0
Produced By: Maskwa Environmental Consulting Ltd.	Map Creator: W. Meinen
Map Date: August 27, 2021	Map #: BLU20021-018





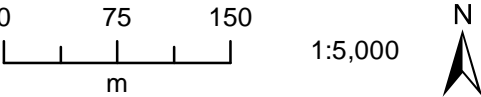
**BER**  
**Hand Hills Wind LP**

Hand Hills Wind Connection Project

**Potential Route**  
**Alignment Details**  
**Sheet 19**

- Legend**
- Preferred Transmission Line
  - Tangent Structure - Preferred Route
  - Dead-end Structure
  - Guy Anchor
  - Permanent Easement
  - Temporary Workspace
  - Unpaved Road
  - Parcel Boundary

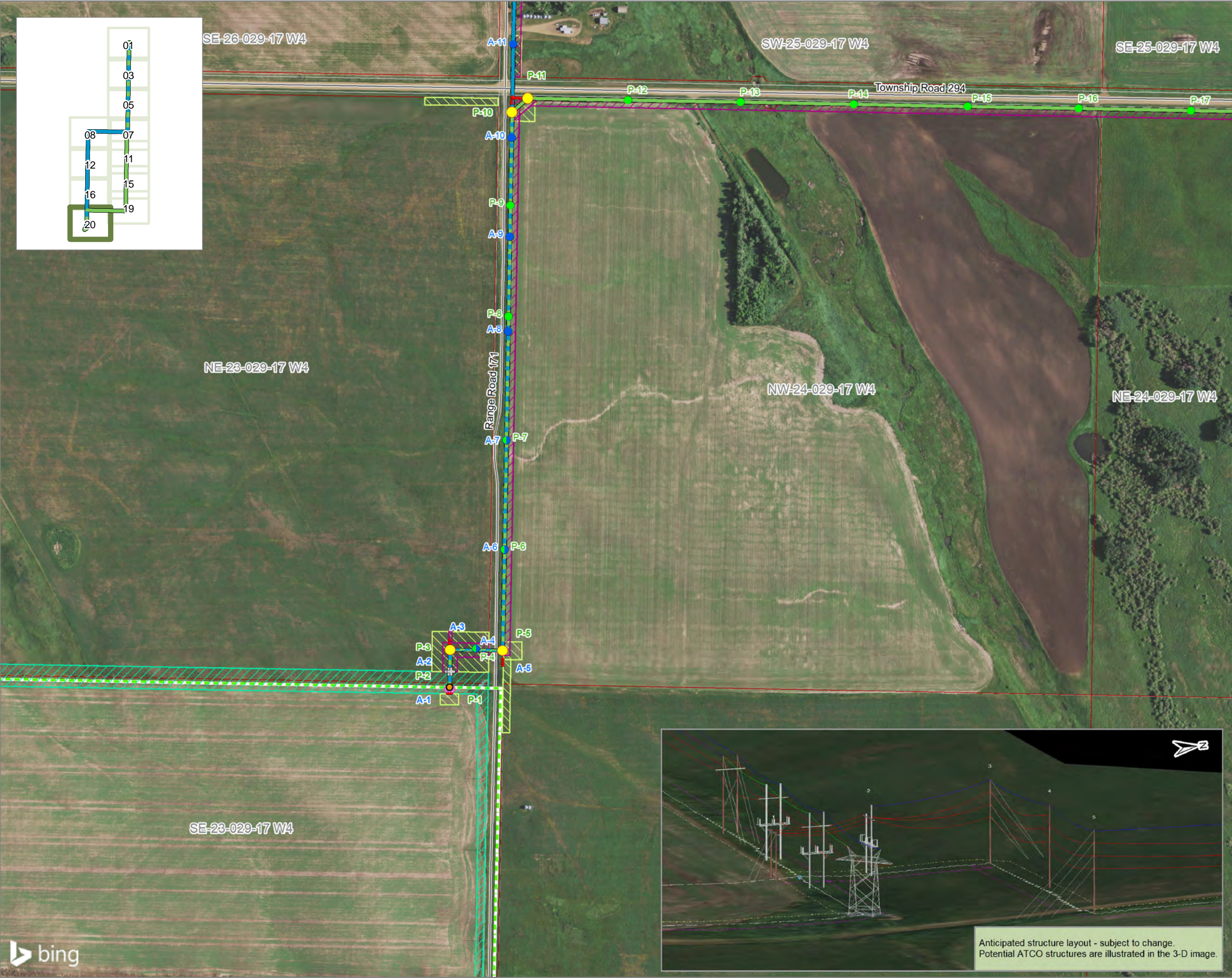
**Note:**  
Only one transmission line would be constructed. Temporary and permanent easements will be refined as routing decisions are made.



Produced For: BER Hand Hills Wind LP	Revision #: 0
Produced By: Maskwa Environmental Consulting Ltd.	Map Creator: W. Meinen
Map Date: August 27, 2021	Map #: BLU20021-018

This document is created solely for the use of BER Hand Hills Wind LP. Maskwa Environmental Consulting Ltd. assumes no liability to any other third party for any representations contained in this drawing. Although there is no reason to believe that there are any errors associated with the data used to create this map product, users of this data are advised that errors may be present. Scale of the map is 1:5,000, when printed at 11" by 17".  
Coordinate System: NAD 1983 UTM Zone 12N Path:  
S:\Client\BLU\Earth\BLU20021\_HandHills\003\_Mapping\20210805\_EngagementMapping\_R21





**BER**  
**Hand Hills Wind LP**

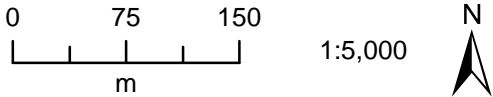
Hand Hills Wind Connection Project

**Potential Route  
Alignment Details  
Sheet 20**

- Legend**
- Transmission Line Point of Interconnection
  - Preferred Transmission Line
  - Alternate Transmission Line
  - Tangent Structure - Preferred Route
  - Tangent Structure - Alternate Route
  - Dead-end Structure
  - H-Frame Structure
  - Switch Structure
  - Guy Anchor
  - Permanent Easement
  - Temporary Workspace
  - ATCO 144 kV Transmission Line
  - ATCO 144 kV Transmission ROW
  - Unpaved Road
  - Parcel Boundary

**Note:**  
Only one transmission line would be constructed. Temporary and permanent easements will be refined as routing decisions are made.

Landowners in the area of the ATCO transmission line will be notified directly by ATCO regarding work necessary at the interconnection point.



Produced For: BER Hand Hills Wind LP	Revision #: 0
Produced By: Maskwa Environmental Consulting Ltd.	Map Creator: W. Meinen
Map Date: August 30, 2021	Map #: BLU20021-018

This document is created solely for the use of BER Hand Hills Wind LP. Maskwa Environmental Consulting Ltd. assumes no liability to any other third party for any representations contained in this drawing. Although there is no reason to believe that there are any errors associated with the data used to create this map product, users of this data are advised that errors may be present. Scale of the map is 1:5,000, when printed at 11" by 17".  
Coordinate System: NAD 1983 UTM Zone 12N Path:  
S:\Client\BLU\Earth\BLU20021\_HandHills\003\_Mapping\20210805\_EngagementMapping\_R21