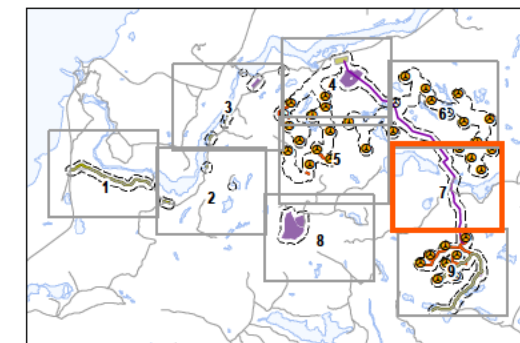


Legend

- 120m Zone of Investigation
- Turbine Location
- Gate Location
- Meteorological Tower
- Proposed Water Extraction Location
- Access Road (New)
- Access Road (Upgrade)
- Overhead/Underground Collector Line
- Access Road Corridor
- Collector Line Corridor
- Turbine Sweep Area
- Turbine Laydown Area
- Construction Compound
- Construction Compound & Welfare Building
- Construction Compound & Transformer Station/Operations & Maintenance Building
- Existing Features
 - Expressway / Highway
 - Road
 - Elevation Contour
 - Existing Transmission Line
 - Watercourse
 - Waterbody
 - Patent Land
- Natural Features
 - Catchment Boundary
 - Vegetation Community Boundary
- Wetlands (delineated by Stantec - SWET)
 - Previously Significant Wetland - PSW
 - Previously Evaluated Wetland - Non-PSW
 - Previously Unidentified Wetland
 - Previously Unidentified Wetland Recommended for Inclusion in PSW



Notes

- Coordinate System: NAD 1983 UTM Zone 16N
- Base features produced under license with the Ontario Ministry of Natural Resources © Queen's Printer for Ontario, 2013.
- Orthographic imagery provided by © USGS, 2013. Imagery taken in 2008.



Stantec

January 2013
160960771

Client/Project

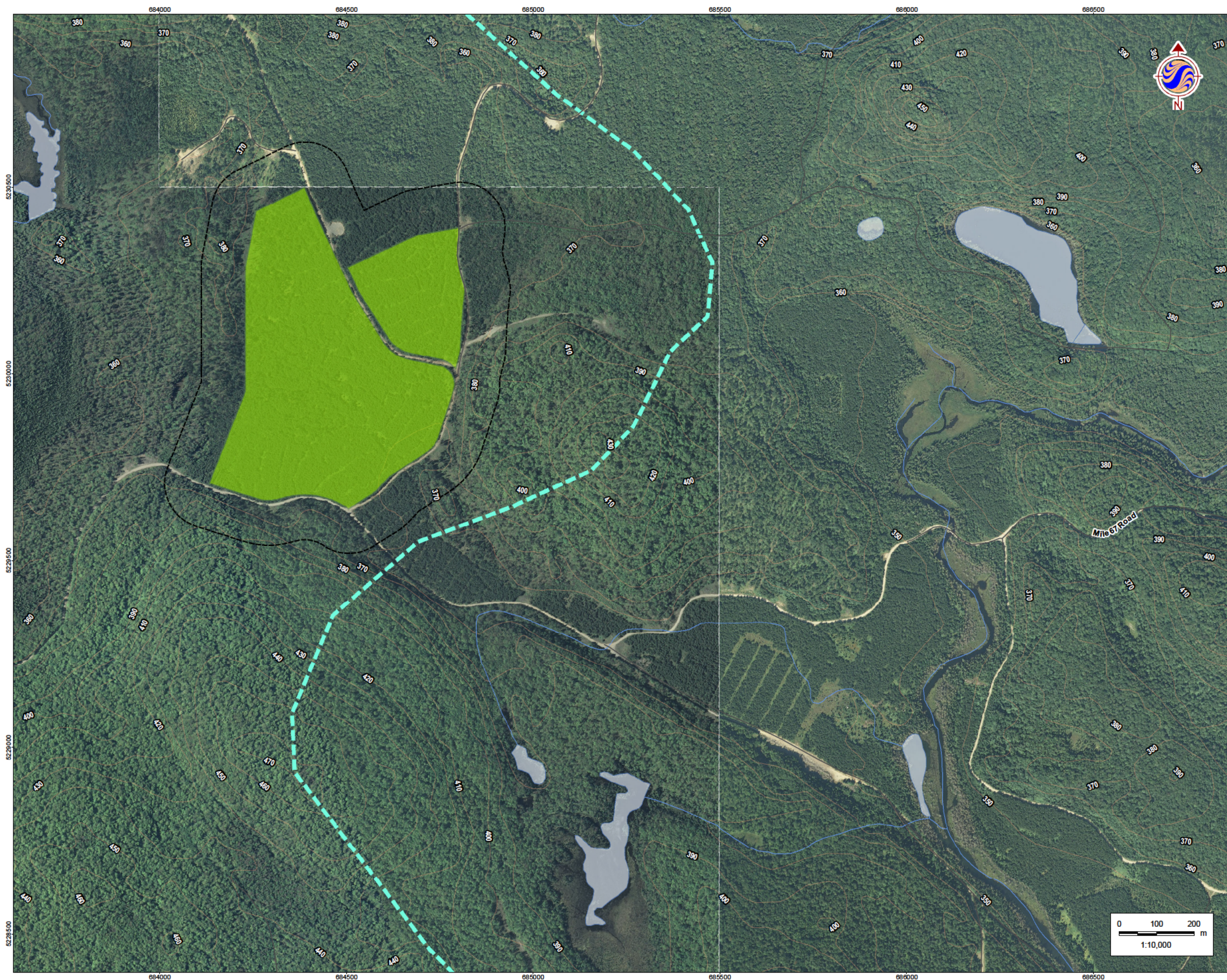
Bow Lake Wind Farm
Nodin Kitagan Limited Partnership and Nodin Kitagan 2
Limited Partnership, through their General Partners
Shongwish Nodin Kitagan GP Corp. and Shongwish
Nodin Kitagan 2 GP Corp.

Figure No.

4.7

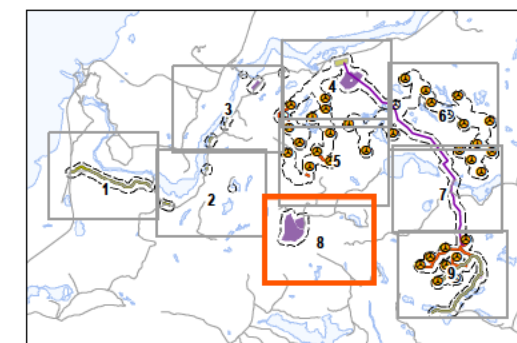
Title

Wetlands



Legend

- 120m Zone of Investigation
- Turbine Location
- Gate Location
- Meteorological Tower
- Proposed Water Extraction Location
- Access Road (New)
- Access Road (Upgrade)
- Overhead/Underground Collector Line
- Access Road Corridor
- Collector Line Corridor
- Turbine Sweep Area
- Turbine Laydown Area
- Construction Compound
- Construction Compound & Welfare Building
- Construction Compound & Transformer Station/Operations & Maintenance Building
- Existing Features
 - Expressway / Highway
 - Road
 - Elevation Contour
 - Existing Transmission Line
 - Watercourse
 - Waterbody
 - Patent Land
- Natural Features
 - Catchment Boundary
 - Vegetation Community Boundary
- Wetlands (delineated by Stantec - SWET)
 - Previously Significant Wetland - PSW
 - Previously Evaluated Wetland - Non-PSW
 - Previously Unidentified Wetland
 - Previously Unidentified Wetland Recommended for Inclusion in PSW



Notes

- Coordinate System: NAD 1983 UTM Zone 16N
- Base features produced under license with the Ontario Ministry of Natural Resources © Queen's Printer for Ontario, 2013.
- Orthographic imagery provided by © USGS, 2013. Imagery taken in 2008.



Stantec

January 2013
160960771

Client/Project

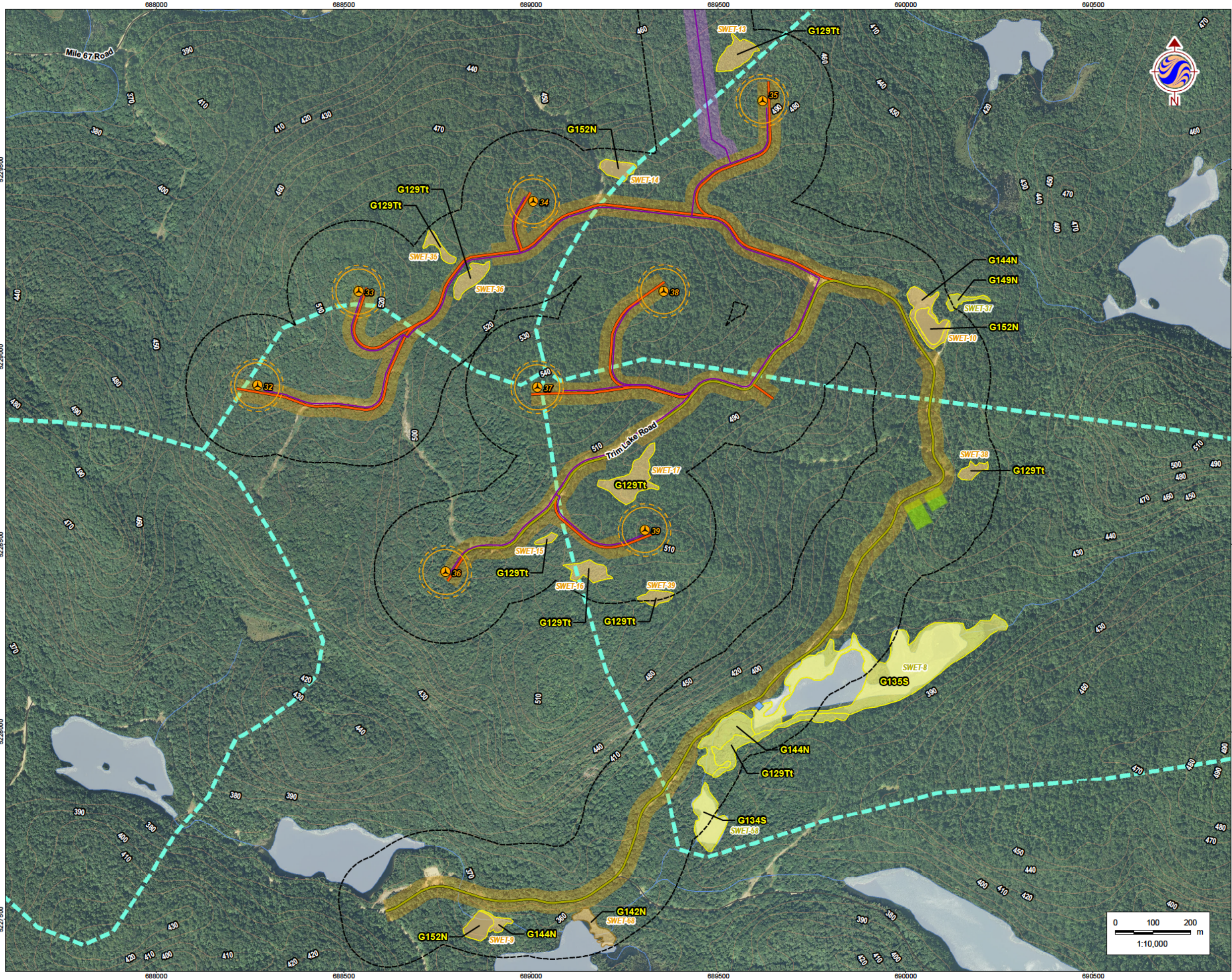
Bow Lake Wind Farm
Nodin Kitagan Limited Partnership and Nodin Kitagan 2
Limited Partnership, through their General Partners
Shongwish Nodin Kitagan GP Corp. and Shongwish
Nodin Kitagan 2 GP Corp.

Figure No.

4.8

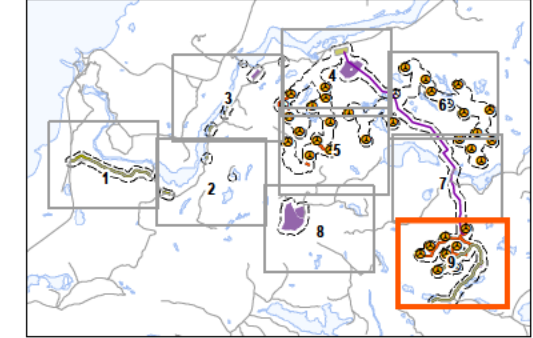
Title

Wetlands



Legend

- 120m Zone of Investigation
- Turbine Location
- Gate Location
- Meteorological Tower
- Proposed Water Extraction Location
- Access Road (New)
- Access Road (Upgrade)
- Overhead/Underground Collector Line
- Access Road Corridor
- Collector Line Corridor
- Turbine Sweep Area
- Turbine Laydown Area
- Construction Compound
- Construction Compound & Welfare Building
- Construction Compound & Transformer Station/Operations & Maintenance Building
- Existing Features
 - Expressway / Highway
 - Road
 - Elevation Contour
 - Existing Transmission Line
 - Watercourse
 - Waterbody
 - Patent Land
- Natural Features
 - Catchment Boundary
 - Vegetation Community Boundary
- Wetlands (delineated by Stantec - SWET)
 - Previously Significant Wetland - PSW
 - Previously Evaluated Wetland - Non-PSW
 - Previously Unidentified Wetland
 - Previously Unidentified Wetland Recommended for Inclusion in PSW



- Notes**
- Coordinate System: NAD 1983 UTM Zone 16N
 - Base features produced under license with the Ontario Ministry of Natural Resources © Queen's Printer for Ontario, 2013.
 - Orthographic imagery provided by © USGS, 2013. Imagery taken in 2008.



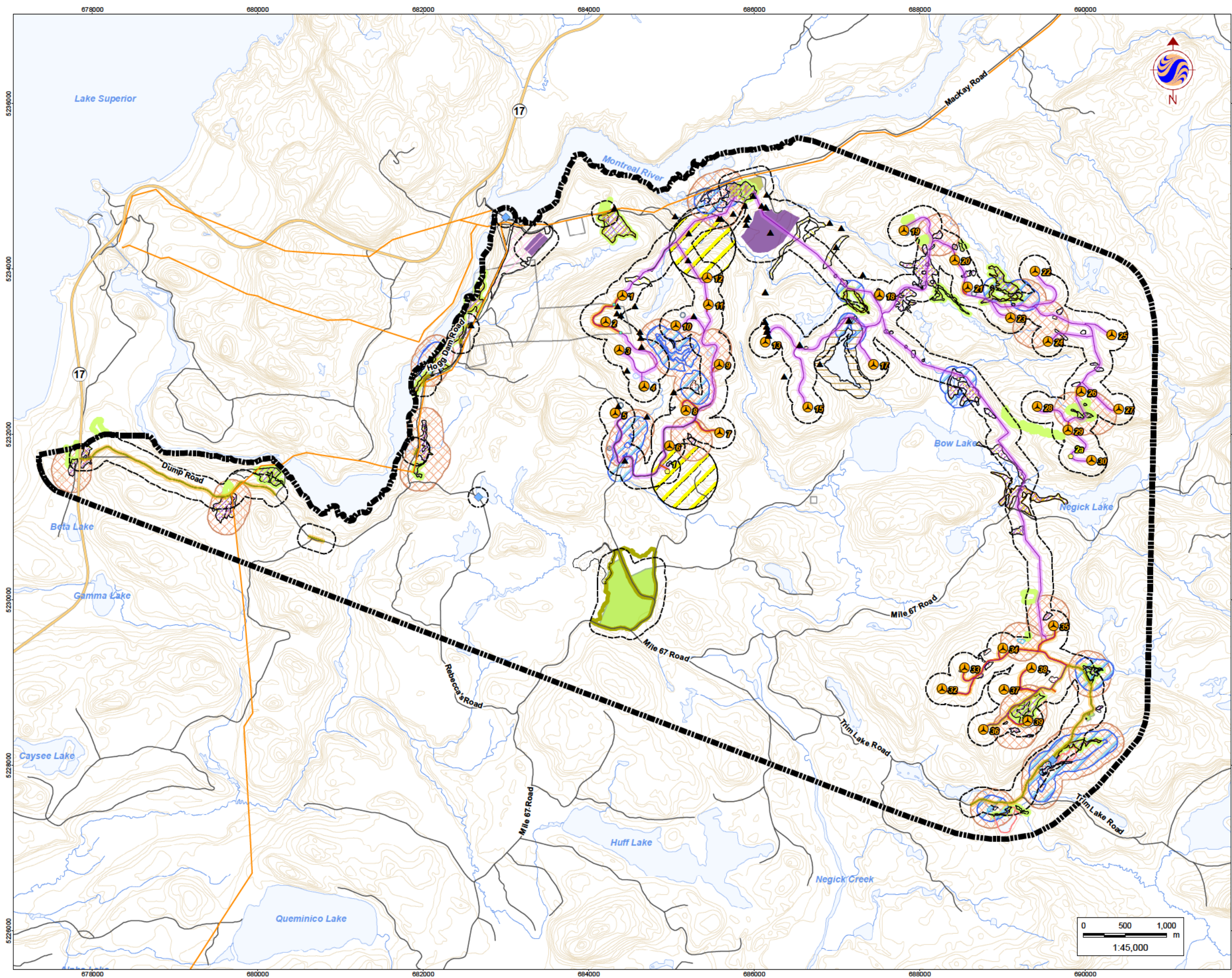
Stantec

January 2013
160960771

Client/Project
Bow Lake Wind Farm
Nodin Kitagan Limited Partnership and Nodin Kitagan 2 Limited Partnership, through their General Partners Shongwish Nodin Kitagan GP Corp. and Shongwish Nodin Kitagan 2 GP Corp.

Figure No.
4.9

Title
Wetlands



Legend

- Study Area
- 120m Zone of Investigation
- Project Components**
 - Turbine Location
 - Gate Location
 - Meteorological Tower
 - Proposed Water Extraction Location
 - Access Road (New)
 - Access Road (Upgrade)
 - Overhead/Underground Collector Line
 - Access Road Corridor
 - Collector Line Corridor
 - Construction Compound
 - Construction Compound & Welfare Building
 - Construction Compound & Transformer Station/Operations & Maintenance Building
- Existing Features**
 - Expressway / Highway
 - Road
 - Elevation Contour
 - Existing Transmission Line
 - Watercourse
 - Waterbody
 - Patent Land
 - Seep
- Candidate Significant Wildlife Habitat**
 - Amphibian Breeding Habitat – Woodlands (ABHW)
 - Blue Wild Rye Habitat (BWRH)
 - Boreal Bedstraw Habitat (BBH)
 - Braun's Holly Fern Habitat (BHFH)
 - Canada Warbler Habitat (CWH)
 - Marsh Bird Breeding Habitat (MBBH)
 - Moose Aquatic Feeding Area (MAFA)
 - Mountain Fir-moss Habitat (MFH)
 - Olive-sided Flycatcher Habitat (OFH)
 - Oval-leaved Bilberry Habitat (OBH)
 - Quill Spike-rush Habitat (QSH)
 - Snake Hibernaculum (SH)
 - Turtle Overwintering Area (TWA)
 - Waterfowl Nesting Area (WNA)
 - Woolly Beach Heath Habitat (WBBH)
 - Woodland Pinedrops Habitat (WPH)
 - Woodland Raptor Nesting Habitat (WRNH)

Notes

- Coordinate System: NAD 1983 UTM Zone 16N
- Base features produced under license with the Ontario Ministry of Natural Resources © Queen's Printer for Ontario, 2013.



Stantec

January 2013
160960771

Client/Project
Bow Lake Wind Farm
Nodin Kitagan Limited Partnership and Nodin Kitagan 2 Limited Partnership, through their General Partners Shongwish Nodin Kitagan GP Corp. and Shongwish Nodin Kitagan 2 GP Corp.

Figure No.
5.0

Title
Candidate Significant Wildlife Habitat - Overview



Legend

- 120m Zone of Investigation**
- Project Components**
- Turbine Location
 - Gate Location
 - Meteorological Tower
 - Proposed Water Extraction Location
 - Access Road (New)
 - Access Road (Upgrade)
 - Overhead/Underground Collector Line
 - Access Road Corridor
 - Collector Line Corridor
 - Turbine Sweep Area
 - Turbine Laydown Area
 - Construction Compound
 - Construction Compound & Welfare Building
 - Construction Compound & Transformer Station/Operations & Maintenance Building
- Existing Features**
- Expressway / Highway
 - Road
 - Elevation Contour
 - Existing Transmission Line
 - Watercourse
 - Waterbody
 - Patent Land
 - Seep
- Candidate Significant Wildlife Habitat**
- Amphibian Breeding Habitat – Woodlands (ABHW)
 - Blue Wild Rye Habitat (BWRH)
 - Boreal Bedstraw Habitat (BBH)
 - Braun's Holly Fern Habitat (BHFH)
 - Canada Warbler Habitat (CWH)
 - Marsh Bird Breeding Habitat (MBBH)
 - Moose Aquatic Feeding Area (MAFA)
 - Mountain Fir-moss Habitat (MFH)
 - Olive-sided Flycatcher Habitat (OFH)
 - Oval-leaved Bilberry Habitat (OBH)
 - Quill Spike-rush Habitat (QSH)
 - Snake Hibernaculum (SH)
 - Turtle Overwintering Area (TWA)
 - Waterfowl Nesting Area (WNA)
 - Woolly Beach Heath Habitat (WBBH)
 - Woodland Pinedrops Habitat (WPH)
 - Woodland Raptor Nesting Habitat (WRNH)

Notes

- Coordinate System: NAD 1983 UTM Zone 16N
- Base features produced under license with the Ontario Ministry of Natural Resources © Queen's Printer for Ontario, 2013.
- Orthographic imagery provided by © USGS, 2013. Imagery taken in 2008.



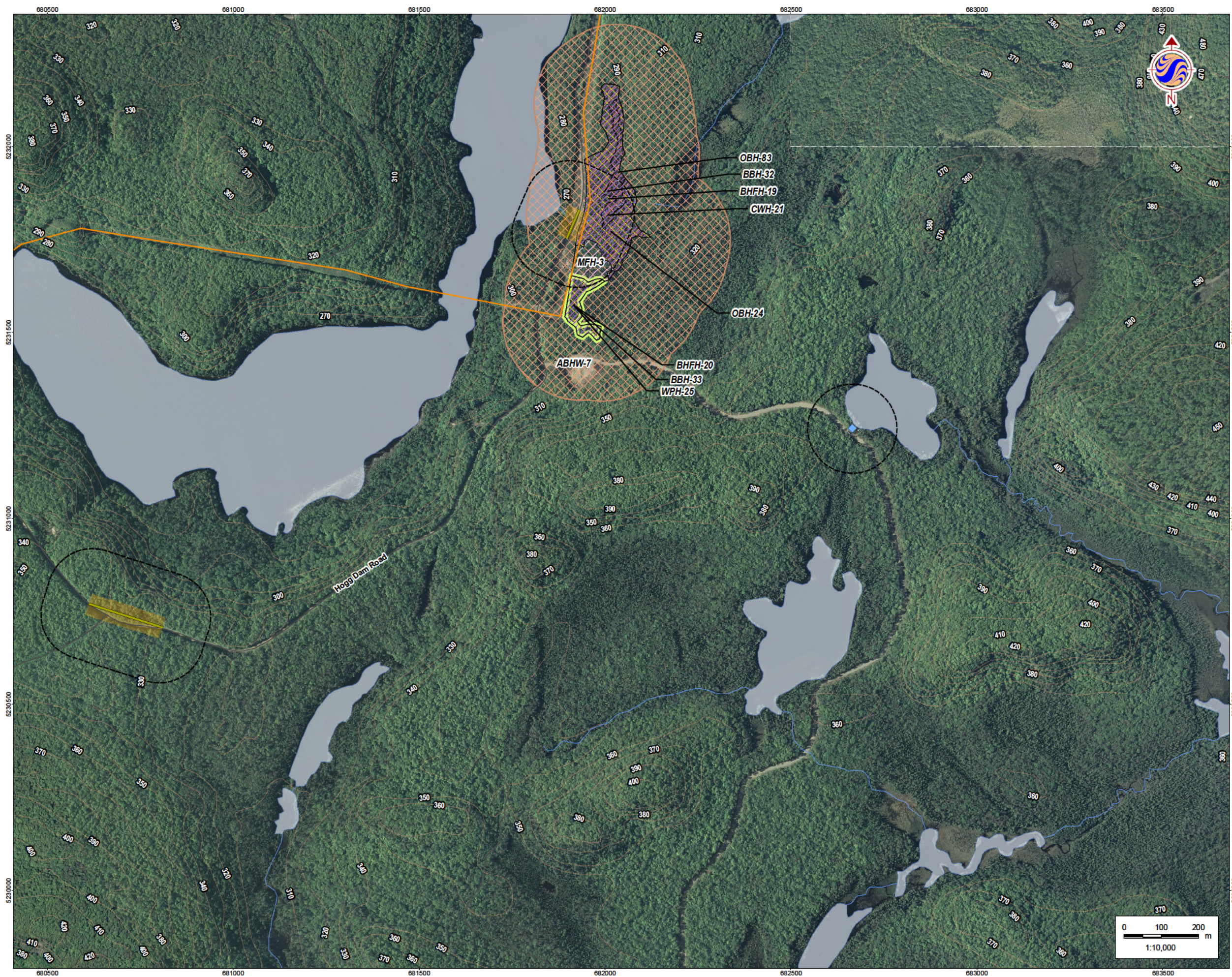
Stantec

January 2013
160960771

Client/Project
Bow Lake Wind Farm
Nodin Kitagan Limited Partnership and Nodin Kitagan 2 Limited Partnership, through their General Partners Shongwish Nodin Kitagan GP Corp. and Shongwish Nodin Kitagan 2 GP Corp.

Figure No.
5.1

Title
Candidate Significant Wildlife Habitat



Legend

- 120m Zone of Investigation
- Project Components**
- Turbine Location
 - Gate Location
 - Meteorological Tower
 - Proposed Water Extraction Location
 - Access Road (New)
 - Access Road (Upgrade)
 - Overhead/Underground Collector Line
 - Access Road Corridor
 - Collector Line Corridor
 - Turbine Sweep Area
 - Turbine Laydown Area
 - Construction Compound
 - Construction Compound & Welfare Building
 - Construction Compound & Transformer Station/Operations & Maintenance Building
- Existing Features**
- Expressway / Highway
 - Road
 - Elevation Contour
 - Existing Transmission Line
 - Watercourse
 - Waterbody
 - Patent Land
 - Seep
- Candidate Significant Wildlife Habitat**
- Amphibian Breeding Habitat – Woodlands (ABHW)
 - Blue Wild Rye Habitat (BWRH)
 - Boreal Bedstraw Habitat (BBH)
 - Braun's Holly Fern Habitat (BHFH)
 - Canada Warbler Habitat (CWH)
 - Marsh Bird Breeding Habitat (MBBH)
 - Moose Aquatic Feeding Area (MAFA)
 - Mountain Fir-moss Habitat (MFH)
 - Olive-sided Flycatcher Habitat (OFH)
 - Oval-leaved Bilberry Habitat (OBH)
 - Quill Spike-rush Habitat (QSH)
 - Snake Hibernaculum (SH)
 - Turtle Overwintering Area (TWA)
 - Waterfowl Nesting Area (WNA)
 - Woolly Beach Heath Habitat (WBBH)
 - Woodland Pinedrops Habitat (WPH)
 - Woodland Raptor Nesting Habitat (WRNH)

Notes

- Coordinate System: NAD 1983 UTM Zone 16N
- Base features produced under license with the Ontario Ministry of Natural Resources © Queen's Printer for Ontario, 2013.
- Orthographic imagery provided by © USGS, 2013. Imagery taken in 2008.



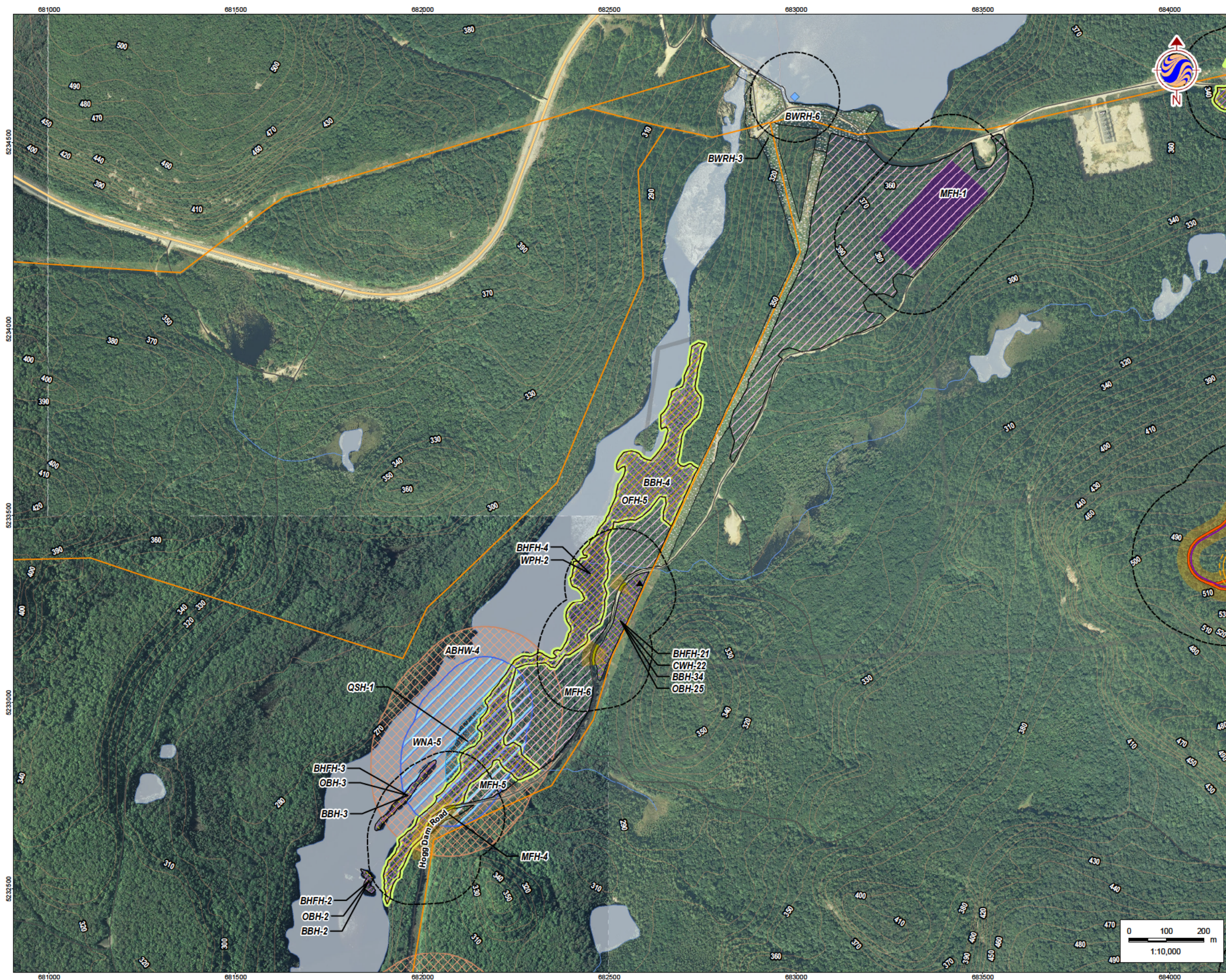
Stantec

January 2013
160960771

Client/Project
Bow Lake Wind Farm
Nodin Kitagan Limited Partnership and Nodin Kitagan 2 Limited Partnership, through their General Partners Shongwish Nodin Kitagan GP Corp. and Shongwish Nodin Kitagan 2 GP Corp.

Figure No.
5.2

Title
Candidate Significant Wildlife Habitat



Legend

- 120m Zone of Investigation
- Project Components**
- Turbine Location
 - Gate Location
 - Meteorological Tower
 - Proposed Water Extraction Location
 - Access Road (New)
 - Access Road (Upgrade)
 - Overhead/Underground Collector Line
 - Access Road Corridor
 - Collector Line Corridor
 - Turbine Sweep Area
 - Turbine Laydown Area
 - Construction Compound
 - Construction Compound & Welfare Building
 - Construction Compound & Transformer Station/Operations & Maintenance Building
- Existing Features**
- Expressway / Highway
 - Road
 - Elevation Contour
 - Existing Transmission Line
 - Watercourse
 - Waterbody
 - Patent Land
 - Seep
- Candidate Significant Wildlife Habitat**
- Amphibian Breeding Habitat – Woodlands (ABHW)
 - Blue Wild Rye Habitat (BWRH)
 - Boreal Bedstraw Habitat (BBH)
 - Braun's Holly Fern Habitat (BHFH)
 - Canada Warbler Habitat (CWH)
 - Marsh Bird Breeding Habitat (MBBH)
 - Moose Aquatic Feeding Area (MAFA)
 - Mountain Fir-moss Habitat (MFH)
 - Olive-sided Flycatcher Habitat (OFH)
 - Oval-leaved Bilberry Habitat (OBH)
 - Quill Spike-rush Habitat (QSH)
 - Snake Hibernaculum (SH)
 - Turtle Overwintering Area (TWA)
 - Waterfowl Nesting Area (WNA)
 - Woolly Beach Heath Habitat (WBBH)
 - Woodland Pinedrops Habitat (WPH)
 - Woodland Raptor Nesting Habitat (WRNH)

Notes

- Coordinate System: NAD 1983 UTM Zone 16N
- Base features produced under license with the Ontario Ministry of Natural Resources © Queen's Printer for Ontario, 2013.
- Orthographic imagery provided by © USGS, 2013. Imagery taken in 2008.



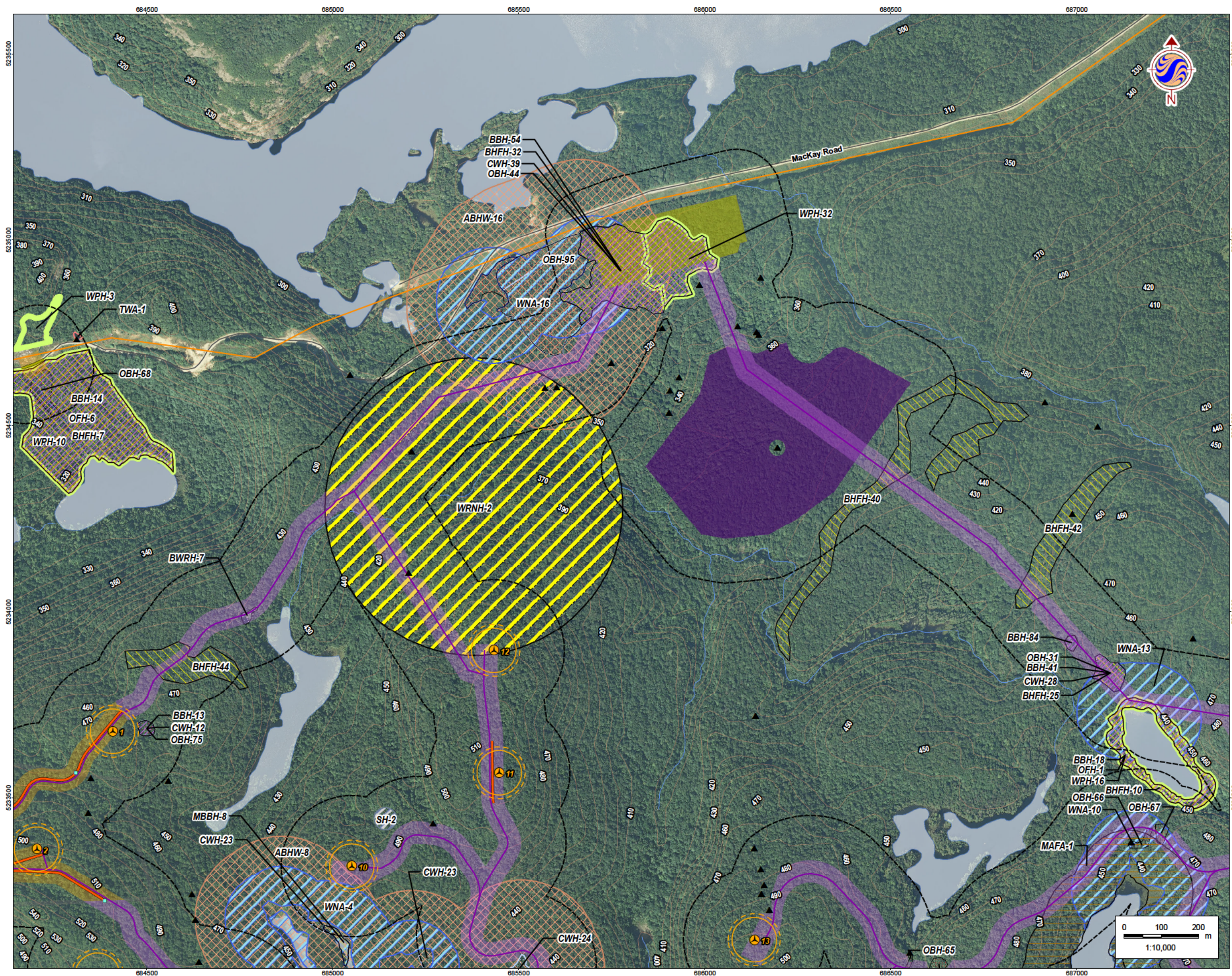
Stantec

January 2013
160960771

Client/Project
Bow Lake Wind Farm
Nodin Kitagan Limited Partnership and Nodin Kitagan 2 Limited Partnership, through their General Partners Shongwish Nodin Kitagan GP Corp. and Shongwish Nodin Kitagan 2 GP Corp.

Figure No.
5.3

Title
Candidate Significant Wildlife Habitat

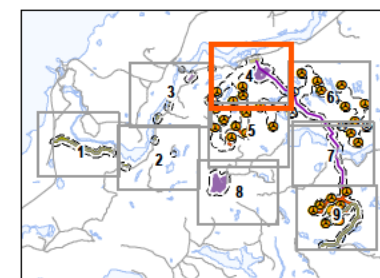


Legend

- 120m Zone of Investigation**
- Project Components**
- Turbine Location
 - Gate Location
 - Meteorological Tower
 - Proposed Water Extraction Location
 - Access Road (New)
 - Access Road (Upgrade)
 - Overhead/Underground Collector Line
 - Access Road Corridor
 - Collector Line Corridor
 - Turbine Sweep Area
 - Turbine Laydown Area
 - Construction Compound
 - Construction Compound & Welfare Building
 - Construction Compound & Transformer Station/Operations & Maintenance Building
- Existing Features**
- Expressway / Highway
 - Road
 - Elevation Contour
 - Existing Transmission Line
 - Watercourse
 - Waterbody
 - Patent Land
 - Seep
- Candidate Significant Wildlife Habitat**
- Amphibian Breeding Habitat – Woodlands (ABHW)
 - Blue Wild Rye Habitat (BWRH)
 - Boreal Bedstraw Habitat (BBH)
 - Braun's Holly Fern Habitat (BHFH)
 - Canada Warbler Habitat (CWH)
 - Marsh Bird Breeding Habitat (MBBH)
 - Moose Aquatic Feeding Area (MAFA)
 - Mountain Fir-moss Habitat (MFH)
 - Olive-sided Flycatcher Habitat (OFH)
 - Oval-leaved Bilberry Habitat (OBH)
 - Quill Spike-rush Habitat (QSH)
 - Snake Hibernaculum (SH)
 - Turtle Overwintering Area (TWA)
 - Waterfowl Nesting Area (WNA)
 - Woolly Beach Heath Habitat (WBBH)
 - Woodland Pinedrops Habitat (WPH)
 - Woodland Raptor Nesting Habitat (WRNH)

Notes

- Coordinate System: NAD 1983 UTM Zone 16N
- Base features produced under license with the Ontario Ministry of Natural Resources © Queen's Printer for Ontario, 2013.
- Orthographic imagery provided by © USGS, 2013. Imagery taken in 2008.



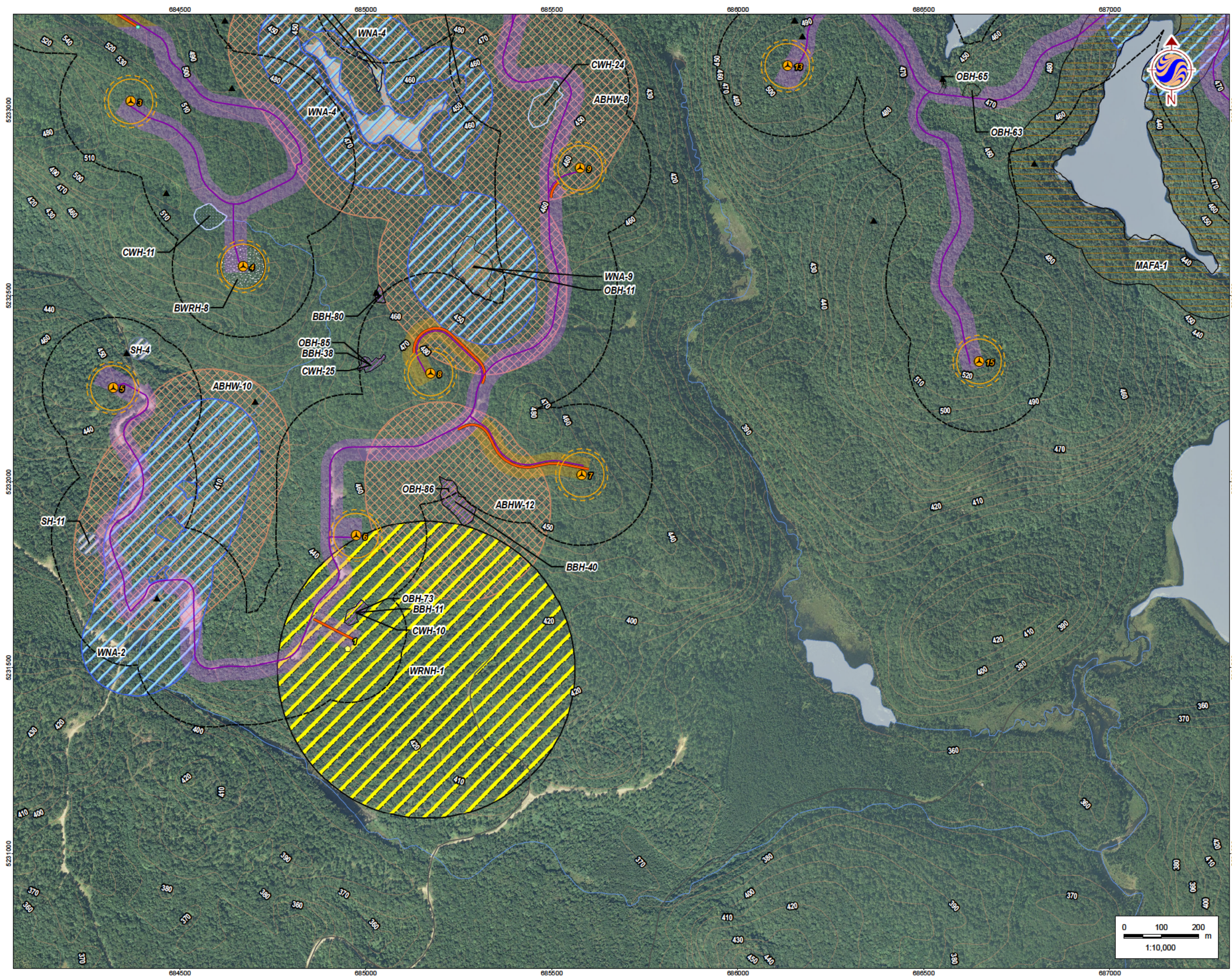
Stantec

January 2013
160960771

Client/Project
Bow Lake Wind Farm
Nodin Kitagan Limited Partnership and Nodin Kitagan 2 Limited Partnership, through their General Partners Shongwish Nodin Kitagan GP Corp. and Shongwish Nodin Kitagan 2 GP Corp.

Figure No.
5.4

Title
Candidate Significant Wildlife Habitat

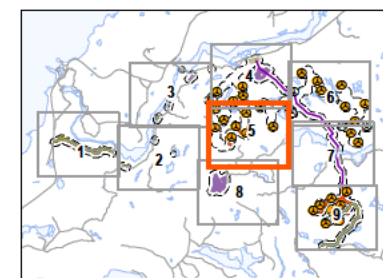


Legend

- 120m Zone of Investigation
- Project Components**
- Turbine Location
 - Gate Location
 - Meteorological Tower
 - Proposed Water Extraction Location
 - Access Road (New)
 - Access Road (Upgrade)
 - Overhead/Underground Collector Line
 - Access Road Corridor
 - Collector Line Corridor
 - Turbine Sweep Area
 - Turbine Laydown Area
 - Construction Compound
 - Construction Compound & Welfare Building
 - Construction Compound & Transformer Station/Operations & Maintenance Building
- Existing Features**
- Expressway / Highway
 - Road
 - Elevation Contour
 - Existing Transmission Line
 - Watercourse
 - Waterbody
 - Patent Land
 - Seep
- Candidate Significant Wildlife Habitat**
- Amphibian Breeding Habitat – Woodlands (ABHW)
 - Blue Wild Rye Habitat (BWRH)
 - Boreal Bedstraw Habitat (BBH)
 - Braun's Holly Fern Habitat (BHFH)
 - Canada Warbler Habitat (CWH)
 - Marsh Bird Breeding Habitat (MBBH)
 - Moose Aquatic Feeding Area (MAFA)
 - Mountain Fir-moss Habitat (MFH)
 - Olive-sided Flycatcher Habitat (OFH)
 - Oval-leaved Bilberry Habitat (OBH)
 - Quill Spike-rush Habitat (QSH)
 - Snake Hibernaculum (SH)
 - Turtle Overwintering Area (TWA)
 - Waterfowl Nesting Area (WNA)
 - Woolly Beach Heath Habitat (WBBH)
 - Woodland Pinedrops Habitat (WPH)
 - Woodland Raptor Nesting Habitat (WRNH)

Notes

- Coordinate System: NAD 1983 UTM Zone 16N
- Base features produced under license with the Ontario Ministry of Natural Resources © Queen's Printer for Ontario, 2013.
- Orthographic imagery provided by © USGS, 2013. Imagery taken in 2008.



Stantec

January 2013
160960771

Client/Project

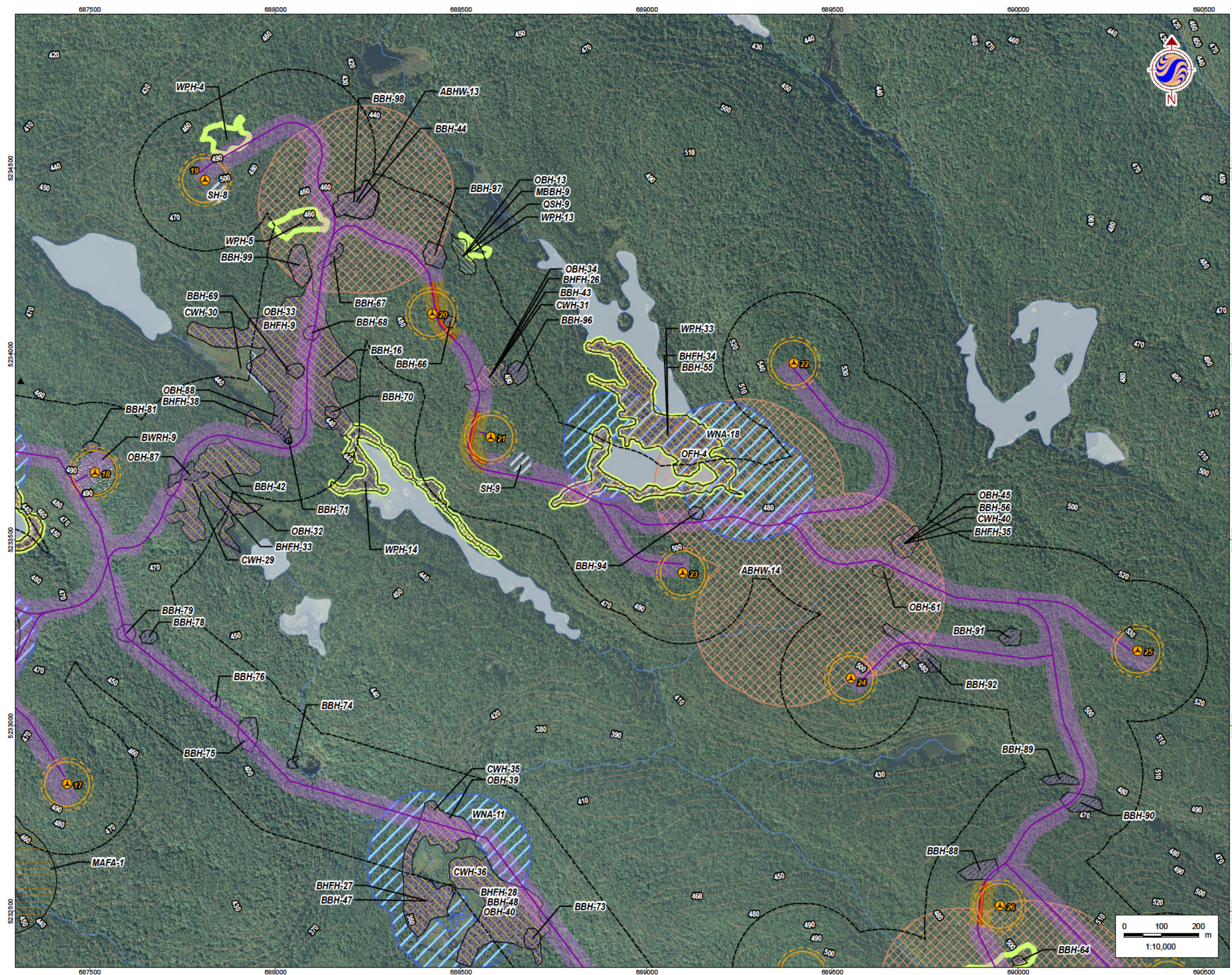
Bow Lake Wind Farm
Nodin Kitagan Limited Partnership and Nodin Kitagan 2
Limited Partnership, through their General Partners
Shongwish Nodin Kitagan GP Corp. and Shongwish
Nodin Kitagan 2 GP Corp.

Figure No.

5.5

Title

**Candidate Significant Wildlife
Habitat**



Legend

- 120m Zone of Investigation
- Project Components**
- Turbine Location
 - Gate Location
 - Meteorological Tower
 - Proposed Water Extraction Location
 - Access Road (New)
 - Access Road (Upgrade)
 - Overhead/Underground Collector Line
 - Access Road Corridor
 - Collector Line Corridor
 - Turbine Sweep Area
 - Turbine Laydown Area
 - Construction Compound
 - Construction Compound & Welfare Building
 - Construction Compound & Transformer Station/Operations & Maintenance Building
- Existing Features**
- Expressway / Highway
 - Road
 - Elevation Contour
 - Existing Transmission Line
 - Watercourse
 - Waterbody
 - Patent Land
 - Seep
- Candidate Significant Wildlife Habitat**
- Amphibian Breeding Habitat – Woodlands (ABHW)
 - Blue Wild Rye Habitat (BWRH)
 - Boreal Bedstraw Habitat (BBH)
 - Braun's Holly Fern Habitat (BHFH)
 - Canada Warbler Habitat (CWH)
 - Marsh Bird Breeding Habitat (MBBH)
 - Moose Aquatic Feeding Area (MAFA)
 - Mountain Fir-moss Habitat (MFH)
 - Olive-sided Flycatcher Habitat (OFH)
 - Oval-leaved Bilberry Habitat (OBH)
 - Quill Spike-rush Habitat (QSH)
 - Snake Hibernaculum (SH)
 - Turtle Overwintering Area (TWA)
 - Waterfowl Nesting Area (WNA)
 - Woolly Beach Heath Habitat (WBBH)
 - Woodland Pinedrops Habitat (WPH)
 - Woodland Raptor Nesting Habitat (WRNH)

Notes

- Coordinate System: NAD 1983 UTM Zone 16N
- Base features produced under license with the Ontario Ministry of Natural Resources © Queen's Printer for Ontario, 2013.
- Orthographic imagery provided by © USGS, 2013. Imagery taken in 2008.



Stantec

January 2013
160960771

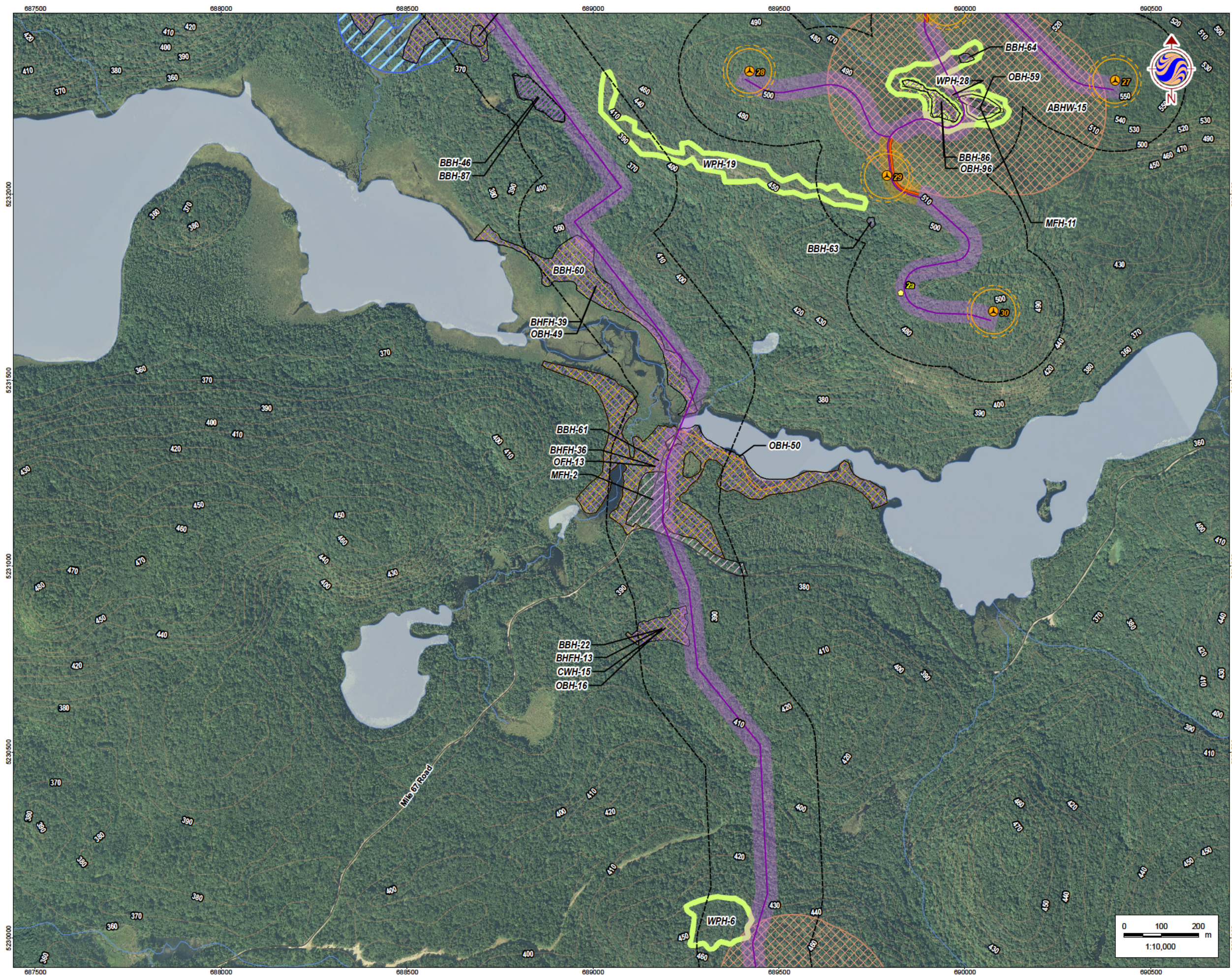
Client/Project

Bow Lake Wind Farm
Nodin Kitagan Limited Partnership and Nodin Kitagan 2
Limited Partnership, through their General Partners
Shongwish Nodin Kitagan GP Corp. and Shongwish
Nodin Kitagan 2 GP Corp.

Figure No.
5.6

Title

**Candidate Significant Wildlife
Habitat**

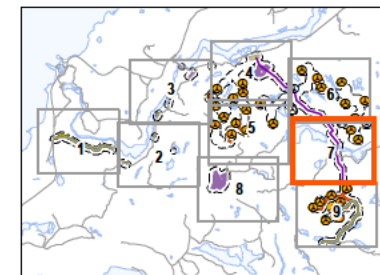


Legend

- 120m Zone of Investigation
- Project Components**
- Turbine Location
 - Gate Location
 - Meteorological Tower
 - Proposed Water Extraction Location
 - Access Road (New)
 - Access Road (Upgrade)
 - Overhead/Underground Collector Line
 - Access Road Corridor
 - Collector Line Corridor
 - Turbine Sweep Area
 - Turbine Laydown Area
 - Construction Compound
 - Construction Compound & Welfare Building
 - Construction Compound & Transformer Station/Operations & Maintenance Building
- Existing Features**
- Expressway / Highway
 - Road
 - Elevation Contour
 - Existing Transmission Line
 - Watercourse
 - Waterbody
 - Patent Land
 - Seep
- Candidate Significant Wildlife Habitat**
- Amphibian Breeding Habitat – Woodlands (ABHW)
 - Blue Wild Rye Habitat (BWRH)
 - Boreal Bedstraw Habitat (BBH)
 - Braun's Holly Fern Habitat (BHFH)
 - Canada Warbler Habitat (CWH)
 - Marsh Bird Breeding Habitat (MBBH)
 - Moose Aquatic Feeding Area (MAFA)
 - Mountain Fir-moss Habitat (MFH)
 - Olive-sided Flycatcher Habitat (OFH)
 - Oval-leaved Bilberry Habitat (OBH)
 - Quill Spike-rush Habitat (QSH)
 - Snake Hibernaculum (SH)
 - Turtle Overwintering Area (TWA)
 - Waterfowl Nesting Area (WNA)
 - Woolly Beach Heath Habitat (WBBH)
 - Woodland Pinedrops Habitat (WPH)
 - Woodland Raptor Nesting Habitat (WRNH)

Notes

- Coordinate System: NAD 1983 UTM Zone 16N
- Base features produced under license with the Ontario Ministry of Natural Resources © Queen's Printer for Ontario, 2013.
- Orthographic imagery provided by © USGS, 2013. Imagery taken in 2008.



January 2013
160960771

Client/Project

Bow Lake Wind Farm
Nodin Kitagan Limited Partnership and Nodin Kitagan 2
Limited Partnership, through their General Partners
Shongwish Nodin Kitagan GP Corp. and Shongwish
Nodin Kitagan 2 GP Corp.

Figure No.

5.7

Title

**Candidate Significant Wildlife
Habitat**

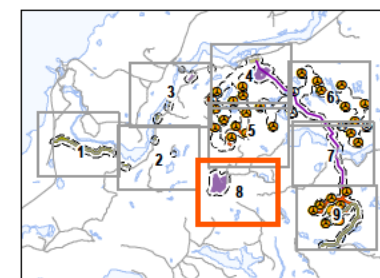


Legend

- 120m Zone of Investigation
- Project Components**
- Turbine Location
 - Gate Location
 - Meteorological Tower
 - Proposed Water Extraction Location
 - Access Road (New)
 - Access Road (Upgrade)
 - Overhead/Underground Collector Line
 - Access Road Corridor
 - Collector Line Corridor
 - Turbine Sweep Area
 - Turbine Laydown Area
 - Construction Compound
 - Construction Compound & Welfare Building
 - Construction Compound & Transformer Station/Operations & Maintenance Building
- Existing Features**
- Expressway / Highway
 - Road
 - Elevation Contour
 - Existing Transmission Line
 - Watercourse
 - Waterbody
 - Patent Land
 - Seep
- Candidate Significant Wildlife Habitat**
- Amphibian Breeding Habitat – Woodlands (ABHW)
 - Blue Wild Rye Habitat (BWRH)
 - Boreal Bedstraw Habitat (BBH)
 - Braun's Holly Fern Habitat (BHFH)
 - Canada Warbler Habitat (CWH)
 - Marsh Bird Breeding Habitat (MBBH)
 - Moose Aquatic Feeding Area (MAFA)
 - Mountain Fir-moss Habitat (MFH)
 - Olive-sided Flycatcher Habitat (OFH)
 - Oval-leaved Bilberry Habitat (OBH)
 - Quill Spike-rush Habitat (QSH)
 - Snake Hibernaculum (SH)
 - Turtle Overwintering Area (TWA)
 - Waterfowl Nesting Area (WNA)
 - Woolly Beach Heath Habitat (WBHH)
 - Woodland Pinedrops Habitat (WPH)
 - Woodland Raptor Nesting Habitat (WRNH)

Notes

- Coordinate System: NAD 1983 UTM Zone 16N
- Base features produced under license with the Ontario Ministry of Natural Resources © Queen's Printer for Ontario, 2013.
- Orthographic imagery provided by © USGS, 2013. Imagery taken in 2008.



Stantec

January 2013
160960771

Client/Project

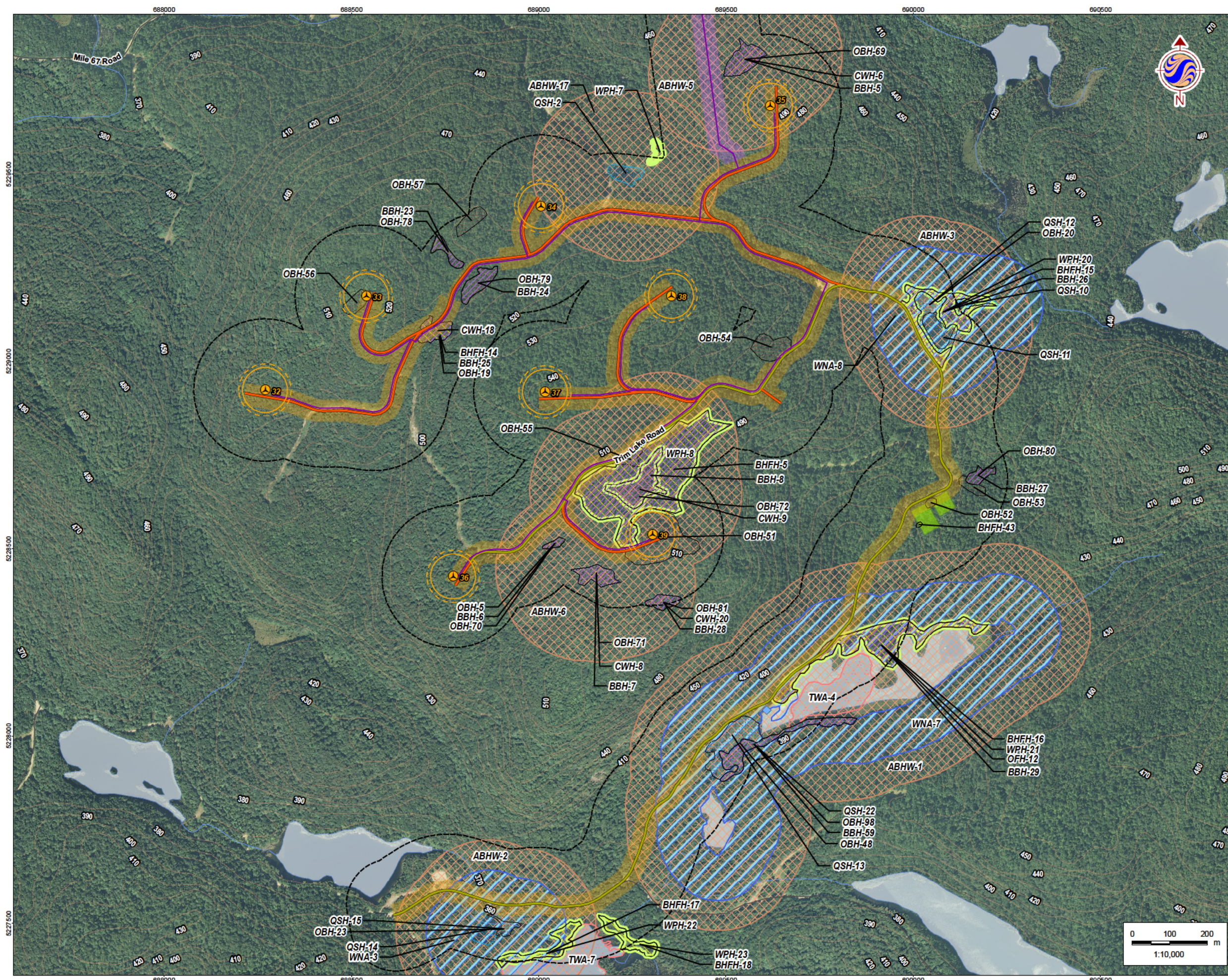
Bow Lake Wind Farm
Nodin Kitagan Limited Partnership and Nodin Kitagan 2
Limited Partnership, through their General Partners
Shongwish Nodin Kitagan GP Corp. and Shongwish
Nodin Kitagan 2 GP Corp.

Figure No.

5.8

Title

**Candidate Significant Wildlife
Habitat**



Legend

- 120m Zone of Investigation
- Project Components**
- Turbine Location
 - Gate Location
 - Meteorological Tower
 - Proposed Water Extraction Location
 - Access Road (New)
 - Access Road (Upgrade)
 - Overhead/Underground Collector Line
 - Access Road Corridor
 - Collector Line Corridor
 - Turbine Sweep Area
 - Turbine Laydown Area
 - Construction Compound
 - Construction Compound & Welfare Building
 - Construction Compound & Transformer Station/Operations & Maintenance Building
- Existing Features**
- Expressway / Highway
 - Road
 - Elevation Contour
 - Existing Transmission Line
 - Watercourse
 - Waterbody
 - Patent Land
 - Seep
- Candidate Significant Wildlife Habitat**
- Amphibian Breeding Habitat – Woodlands (ABHW)
 - Blue Wild Rye Habitat (BWRH)
 - Boreal Bedstraw Habitat (BBH)
 - Braun's Holly Fern Habitat (BHFH)
 - Canada Warbler Habitat (CWH)
 - Marsh Bird Breeding Habitat (MBBH)
 - Moose Aquatic Feeding Area (MAFA)
 - Mountain Fir-moss Habitat (MFH)
 - Olive-sided Flycatcher Habitat (OFH)
 - Oval-leaved Bilberry Habitat (OBH)
 - Quill Spike-rush Habitat (QSH)
 - Snake Hibernaculum (SH)
 - Turtle Overwintering Area (TWA)
 - Waterfowl Nesting Area (WNA)
 - Woolly Beach Heath Habitat (WBBH)
 - Woodland Pinedrops Habitat (WPH)
 - Woodland Raptor Nesting Habitat (WRNH)

Notes

- Coordinate System: NAD 1983 UTM Zone 16N
- Base features produced under license with the Ontario Ministry of Natural Resources © Queen's Printer for Ontario, 2013.
- Orthographic imagery provided by © USGS, 2013. Imagery taken in 2008.



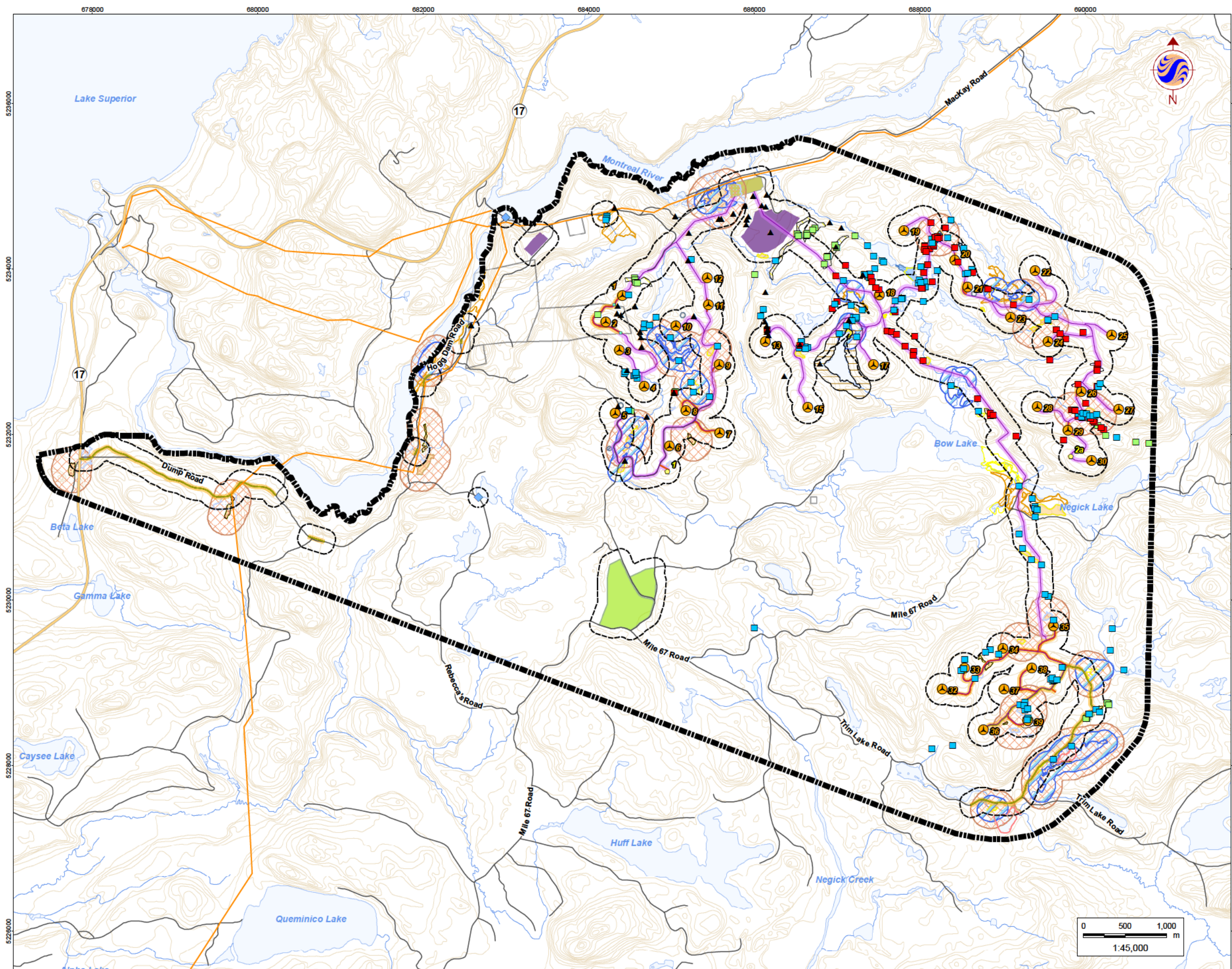
Stantec

January 2013
160960771

Client/Project
Bow Lake Wind Farm
Nodin Kitagan Limited Partnership and Nodin Kitagan 2 Limited Partnership, through their General Partners Shongwish Nodin Kitagan GP Corp. and Shongwish Nodin Kitagan 2 GP Corp.

Figure No.
5.9

Title
Candidate Significant Wildlife Habitat



Legend

- Study Area
- 120m Zone of Investigation
- Project Components**
 - Turbine Location
 - Gate Location
 - Meteorological Tower
 - Proposed Water Extraction Location
 - Access Road (New)
 - Access Road (Upgrade)
 - Overhead/Underground Collector Line
 - Access Road Corridor
 - Collector Line Corridor
 - Construction Compound
 - Construction Compound & Welfare Building
 - Construction Compound & Transformer Station/Operations & Maintenance Building
- Existing Features**
 - Expressway / Highway
 - Road
 - Elevation Contour
 - Existing Transmission Line
 - Watercourse
 - Waterbody
 - Patent Land
 - Vegetation Community Boundary
- Wetlands (delineated by Stantec - SWET)**
 - Previously Significant Wetland - PSW
 - Previously Evaluated Wetland - Non-PSW
 - Previously Unidentified Wetland
 - Previously Unidentified Wetland Recommended for Inclusion in PSW
- Wildlife Habitat - Seasonal Concentration Areas**
 - Snake Hibernaculum (SH)
 - Turtle Overwintering Area (TWA)
- Wildlife Habitat - Rare Vegetation Communities or Specialized Habitat for Wildlife**
 - Moose Aquatic Feeding Area (MAFA)
 - Waterfowl Nesting Area (WNA)
 - Canada Warbler Habitat (CWH)
 - Olive-sided Flycatcher Habitat (OFH)
 - Boreal Bedstraw Habitat (BBH)
 - Braun's Holly Fern Habitat (BHFFH)
 - Oval-leaved Bilberry Habitat (OBH)
- Attributes Supporting Significant Wildlife Habitat**
 - Seep
 - Boreal Bedstraw
 - Braun's Holly Fern
 - Oval-leaved Bilberry
 - Amphibian Breeding Habitat - Woodlands (ABHW)
- Species of Conservation Concern or Rare Birds**
 - Marsh Bird Breeding Habitat (MBBH)

Notes

- Coordinate System: NAD 1983 UTM Zone 16N
 - Base features produced under license with the Ontario Ministry of Natural Resources © Queen's Printer for Ontario, 2013.
- * Breeding ponds in woodland habitats assumed throughout Zone of Investigation (not illustrated).
 - ** Forested breeding habitats throughout Zone of Investigation (not illustrated).



Stantec

January 2013
160960771

Client/Project
Bow Lake Wind Farm
Nodin Kitagan Limited Partnership and Nodin Kitagan 2
Limited Partnership, through their General Partners
Shongwish Nodin Kitagan GP Corp. and Shongwish
Nodin Kitagan 2 GP Corp.

Figure No.
6.0

Title
**Significant Natural Heritage
Features and Attributes - Overview**



Legend

120m Zone of Investigation

Project Components

- Turbine Location
- Gate Location
- Meteorological Tower
- Proposed Water Extraction Location
- Access Road (New)
- Access Road (Upgrade)
- Overhead/Underground Collector Line
- Access Road Corridor
- Collector Line Corridor
- Turbine Sweep Area
- Turbine Laydown Area
- Construction Compound
- Construction Compound & Welfare Building
- Construction Compound & Transformer
- Station/Operations & Maintenance Building

Existing Features

- Expressway / Highway
- Road
- Elevation Contour
- Existing Transmission Line
- Watercourse
- Waterbody
- Patent Land
- Vegetation Community Boundary
- Wetlands (delineated by Stantec - SWET)**
 - Previously Significant Wetland - PSW
 - Previously Evaluated Wetland - Non-PSW
 - Previously Unidentified Wetland
 - Previously Unidentified Wetland Recommended for Inclusion in PSW

Wildlife Habitat – Seasonal Concentration Areas

- Snake Hibernaculum (SH)
- Turtle Overwintering Area (TWA)

Wildlife Habitat – Rare Vegetation Communities or

Specialized Habitat for Wildlife

- Moose Aquatic Feeding Area (MAFA)
- Waterfowl Nesting Area (WNA)
- Canada Warbler Habitat (CWH)
- Olive-sided Flycatcher Habitat (OFH)

Attributes Supporting Significant Wildlife Habitat

- Seep
- Boreal Bedstraw
- Braun's Holly Fern
- Oval-leaved Bilberry
- Amphibian Breeding Habitat – Woodlands (ABHW)
- Species of Conservation Concern or Rare Birds
- Marsh Bird Breeding Habitat (MBBH)

ABHW-1 Black text, white halo = Confirmed Significant Feature

CWH-1 White text, grey halo = Assumed Significant Feature

Notes

- Coordinate System NAD 1983 UTM Zone 16N
- Base features produced under license with the Ontario Ministry of Natural Resources
- Queen's Printer for Ontario, 2013.
- Orthographic imagery provided by © USGS, 2013. Imagery taken in 2008.
- Breeding ponds in woodland habitats assumed throughout Zone of Investigation (not illustrated).
- Forested breeding habitats throughout Zone of Investigation (not illustrated)



Stantec

January 2013
160960771

Client/Project

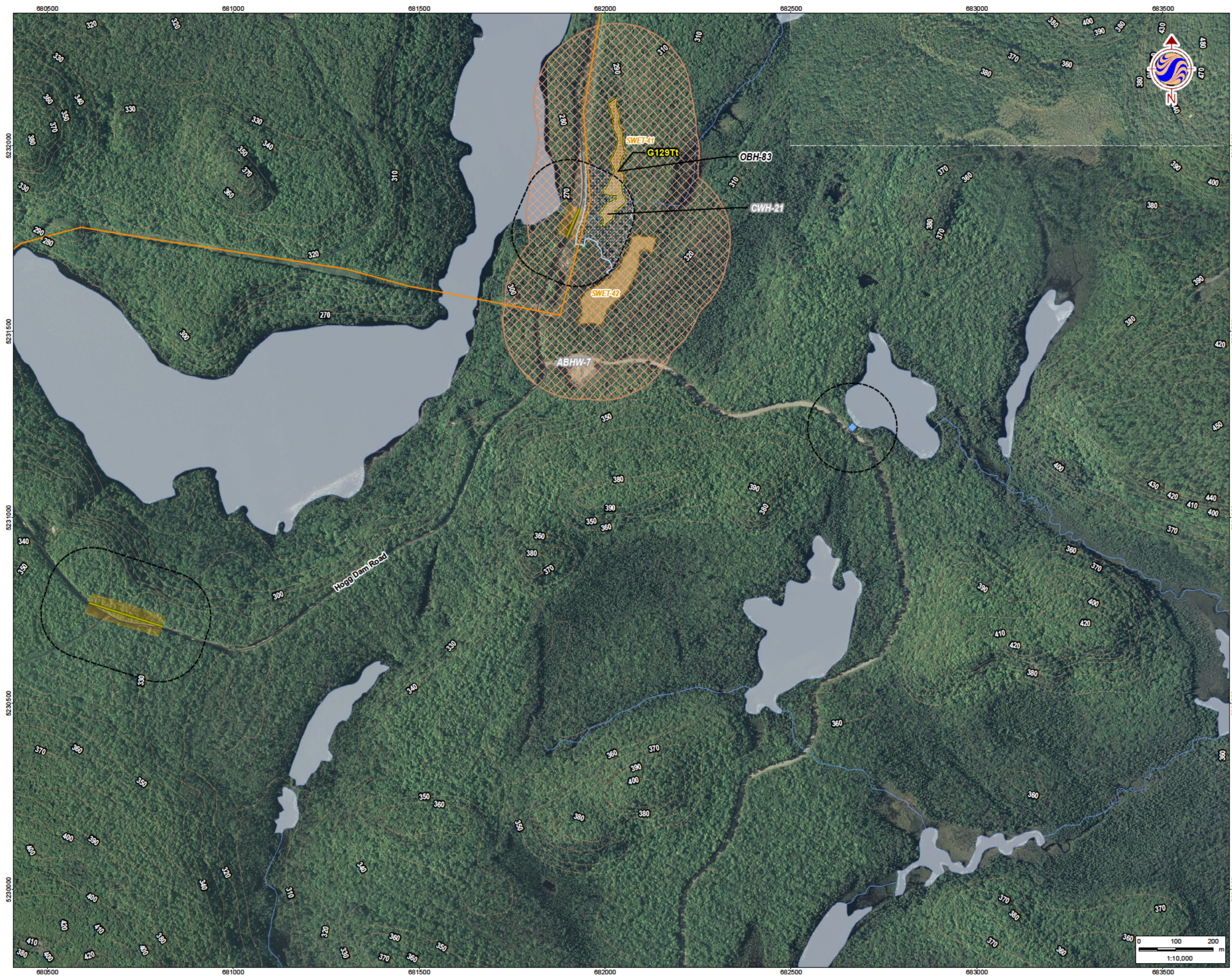
Bow Lake Wind Farm
Nodin Kitagan Limited Partnership and Nodin Kitagan 2
Limited Partnership, through their General Partners
Shongwish Nodin Kitagan GP Corp. and Shongwish
Nodin Kitagan 2 GP Corp.

Figure No.

6.1

Title

**Significant Natural Heritage
Features and Attributes**



Legend

- 120m Zone of Investigation
- Project Components**
- Turbine Location
 - Gate Location
 - Meteorological Tower
 - Proposed Water Extraction Location
 - Access Road (New)
 - Access Road (Upgrade)
 - Overhead/Underground Collector Line
 - Access Road Corridor
 - Collector Line Corridor
 - Turbine Sweep Area
 - Turbine Laydown Area
 - Construction Compound
 - Construction Compound & Welfare Building
 - Construction Compound & Transformer
 - Station/Operations & Maintenance Building
- Existing Features**
- Expressway / Highway
 - Road
 - Elevation Contour
 - Existing Transmission Line
 - Watercourse
 - Waterbody
 - Patent Land
 - Vegetation Community Boundary
- Wetlands (delineated by Stantec - SWET)**
- Previously Significant Wetland - PSW
 - Previously Evaluated Wetland - Non-PSW
 - Previously Unidentified Wetland
 - Previously Unidentified Wetland Recommended for Inclusion in PSW
- Wildlife Habitat – Seasonal Concentration Areas**
- Snake Hibernaculum (SH)
 - Turtle Overwintering Area (TWA)
- Wildlife Habitat – Rare Vegetation Communities or Specialized Habitat for Wildlife**
- Moose Aquatic Feeding Area (MAFA)
 - Waterfowl Nesting Area (WNA)
 - Canada Warbler Habitat (CWH)
 - Olive-sided Flycatcher Habitat (OFH)
- Attributes Supporting Significant Wildlife Habitat**
- Seep
 - Boreal Bedstraw
 - Braun's Holly Fern
 - Oval-leaved Bilberry
- Species of Conservation Concern or Rare Birds**
- Amphibian Breeding Habitat – Woodlands (ABHW)
 - Marsh Bird Breeding Habitat (MBBH)

ABHW-1 Black text, white halo = Confirmed Significant Feature
CWH-1 White text, grey halo = Assumed Significant Feature

- Notes**
- Coordinate System NAD 1983 UTM Zone 18N
 - Base features produced under license with the Ontario Ministry of Natural Resources © Queen's Printer for Ontario, 2013.
 - Orthographic imagery provided by © USGS, 2013. Imagery taken in 2008.
 - * Breeding ponds in woodland habitats assumed throughout Zone of Investigation (not illustrated).
 - ** Forested breeding habitats throughout Zone of Investigation (not illustrated)



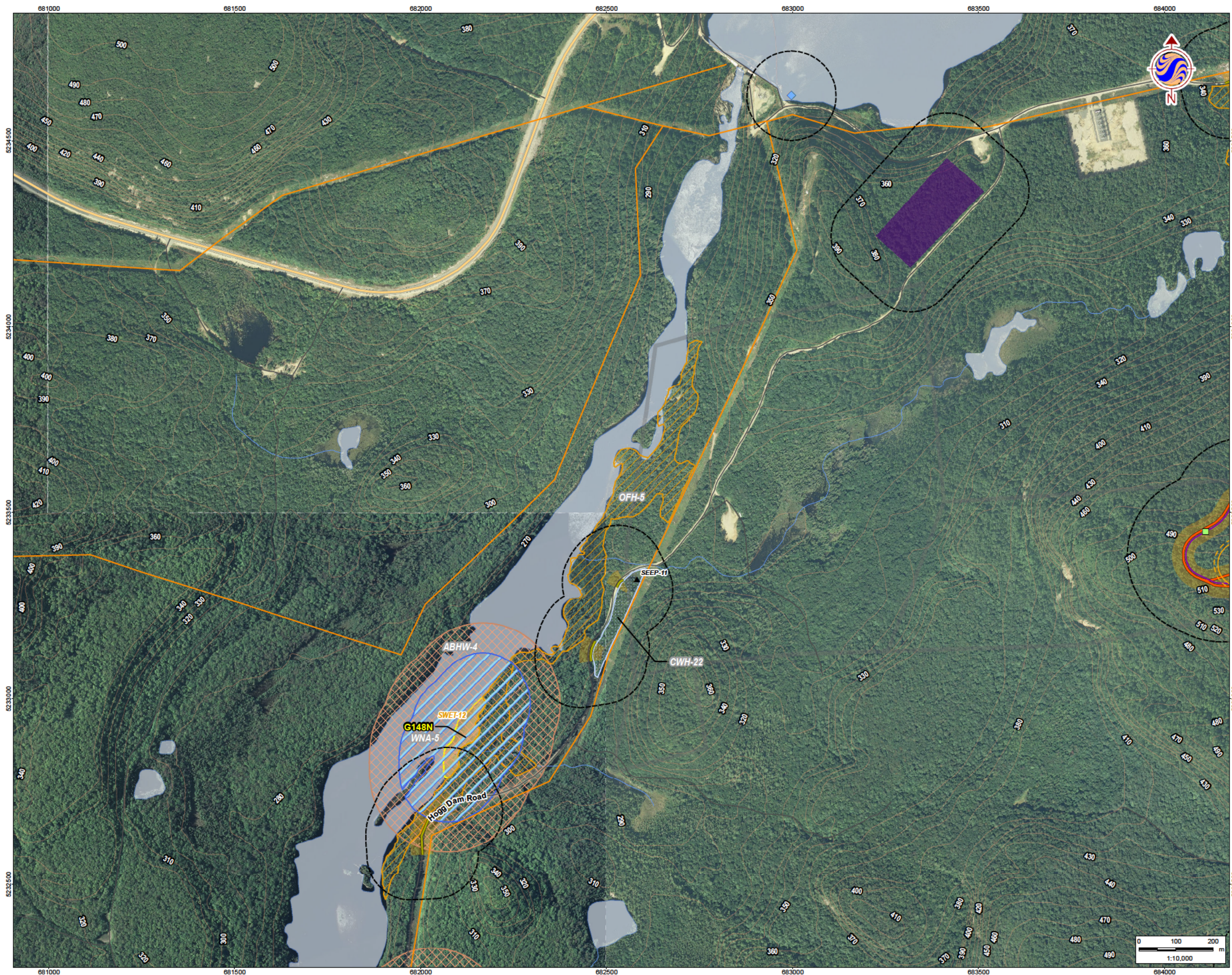
Stantec

January 2013
160960771

Client/Project
Bow Lake Wind Farm
Nodin Kitagan Limited Partnership and Nodin Kitagan 2 Limited Partnership, through their General Partners Shongwish Nodin Kitagan GP Corp. and Shongwish Nodin Kitagan 2 GP Corp.

Figure No.
6.2

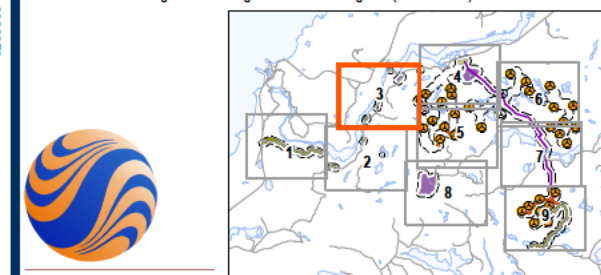
Title
Significant Natural Heritage Features and Attributes



Legend

- 120m Zone of Investigation**
- Project Components**
- Turbine Location
 - Gate Location
 - Meteorological Tower
 - Proposed Water Extraction Location
 - Access Road (New)
 - Access Road (Upgrade)
 - Overhead/Underground Collector Line
 - Access Road Corridor
 - Collector Line Corridor
 - Turbine Sweep Area
 - Turbine Laydown Area
 - Construction Compound
 - Construction Compound & Welfare Building
 - Construction Compound & Transformer
 - Station/Operations & Maintenance Building
- Existing Features**
- Expressway / Highway
 - Road
 - Elevation Contour
 - Existing Transmission Line
 - Watercourse
 - Waterbody
 - Patent Land
 - Vegetation Community Boundary
- Wetlands (delineated by Stantec - SWET)**
- Previously Significant Wetland - PSW
 - Previously Evaluated Wetland - Non-PSW
 - Previously Unidentified Wetland
 - Previously Unidentified Wetland Recommended for Inclusion in PSW
- Wildlife Habitat – Seasonal Concentration Areas**
- Snake Hibernaculum (SH)
 - Turtle Overwintering Area (TWA)
- Wildlife Habitat – Rare Vegetation Communities or Specialized Habitat for Wildlife**
- Moose Aquatic Feeding Area (MAFA)
 - Waterfowl Nesting Area (WNA)
 - Canada Warbler Habitat (CWH)
 - Olive-sided Flycatcher Habitat (OFH)
- Attributes Supporting Significant Wildlife Habitat**
- Seep
 - Boreal Bedstraw
 - Braun's Holly Fern
 - Oval-leaved Bilberry
- Amphibian Breeding Habitat – Woodlands (ABHW)**
- Species of Conservation Concern or Rare Birds**
- Marsh Bird Breeding Habitat (MBBH)
- ABHW-1** Black text, white halo = Confirmed Significant Feature
- CWH-1** White text, grey halo = Assumed Significant Feature

- Notes**
- Coordinate System: NAD 1983 UTM Zone 16N
 - Base features produced under license with the Ontario Ministry of Natural Resources © Queen's Printer for Ontario, 2013.
 - Orthographic imagery provided by © USGS, 2013. Imagery taken in 2008.
 - Breeding ponds in woodland habitats assumed throughout Zone of Investigation (not illustrated).
 - For forested breeding habitats throughout Zone of Investigation (not illustrated).



Stantec

January 2013
160960771

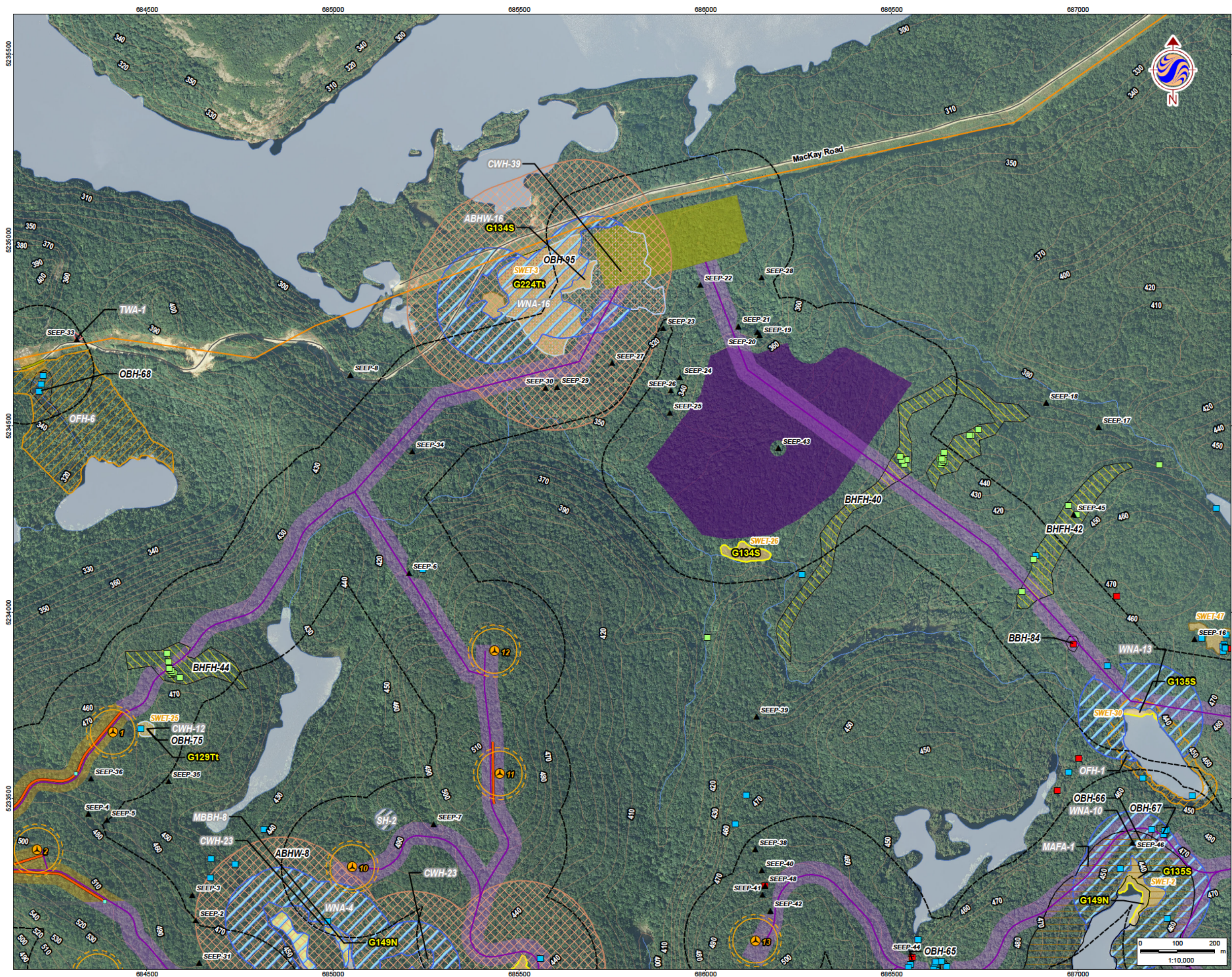
Client/Project

Bow Lake Wind Farm
Nodin Kitagan Limited Partnership and Nodin Kitagan 2 Limited Partnership, through their General Partners Shongwish Nodin Kitagan GP Corp. and Shongwish Nodin Kitagan 2 GP Corp.

Figure No.
6.3

Title

Significant Natural Heritage Features and Attributes

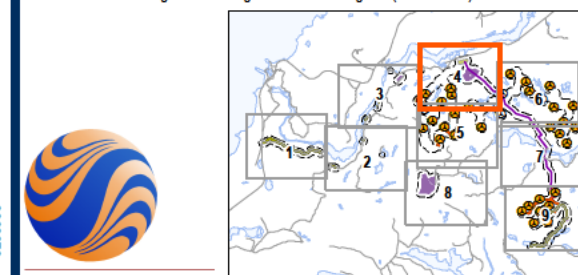


Legend

- 120m Zone of Investigation
- Project Components
 - Turbine Location
 - Gate Location
 - Meteorological Tower
 - Proposed Water Extraction Location
 - Access Road (New)
 - Access Road (Upgrade)
 - Overhead/Underground Collector Line
 - Access Road Corridor
 - Collector Line Corridor
 - Turbine Sweep Area
 - Turbine Laydown Area
 - Construction Compound
 - Construction Compound & Welfare Building
 - Construction Compound & Transformer
 - Station/Operations & Maintenance Building
- Existing Features
 - Expressway / Highway
 - Road
 - Elevation Contour
 - Existing Transmission Line
 - Watercourse
 - Waterbody
 - Patent Land
 - Vegetation Community Boundary
- Wetlands (delineated by Stantec - SWET)
 - Previously Significant Wetland - PSW
 - Previously Evaluated Wetland - Non-PSW
 - Previously Unidentified Wetland
 - Previously Unidentified Wetland Recommended for Inclusion in PSW
- Wildlife Habitat – Seasonal Concentration Areas
 - Snake Hibernaculum (SH)
 - Turtle Overwintering Area (TWA)
- Wildlife Habitat – Rare Vegetation Communities or Specialized Habitat for Wildlife
 - Moose Aquatic Feeding Area (MAFA)
 - Waterfowl Nesting Area (WNA)
 - Canada Warbler Habitat (CWH)
 - Olive-sided Flycatcher Habitat (OFH)
- Attributes Supporting Significant Wildlife Habitat
 - Seep
 - Boreal Bedstraw
 - Braun's Holly Fern
 - Oval-leaved Bilberry
 - Amphibian Breeding Habitat – Woodlands (ABHW)
- Species of Conservation Concern or Rare Birds
 - Marsh Bird Breeding Habitat (MBBH)

ABHW-1 Black text, white halo = Confirmed Significant Feature
CWH-1 White text, grey halo = Assumed Significant Feature

- Notes
1. Coordinate System: NAD 1983 UTM Zone 18N
 2. Base features produced under license with the Ontario Ministry of Natural Resources
 3. Queen's Printer for Ontario, 2013
 4. Orthographic imagery provided by © USGS, 2013. Imagery taken in 2008.
 5. Breeding ponds in woodland habitats assumed throughout Zone of Investigation (not illustrated).
 6. Forested breeding habitats throughout Zone of Investigation (not illustrated).



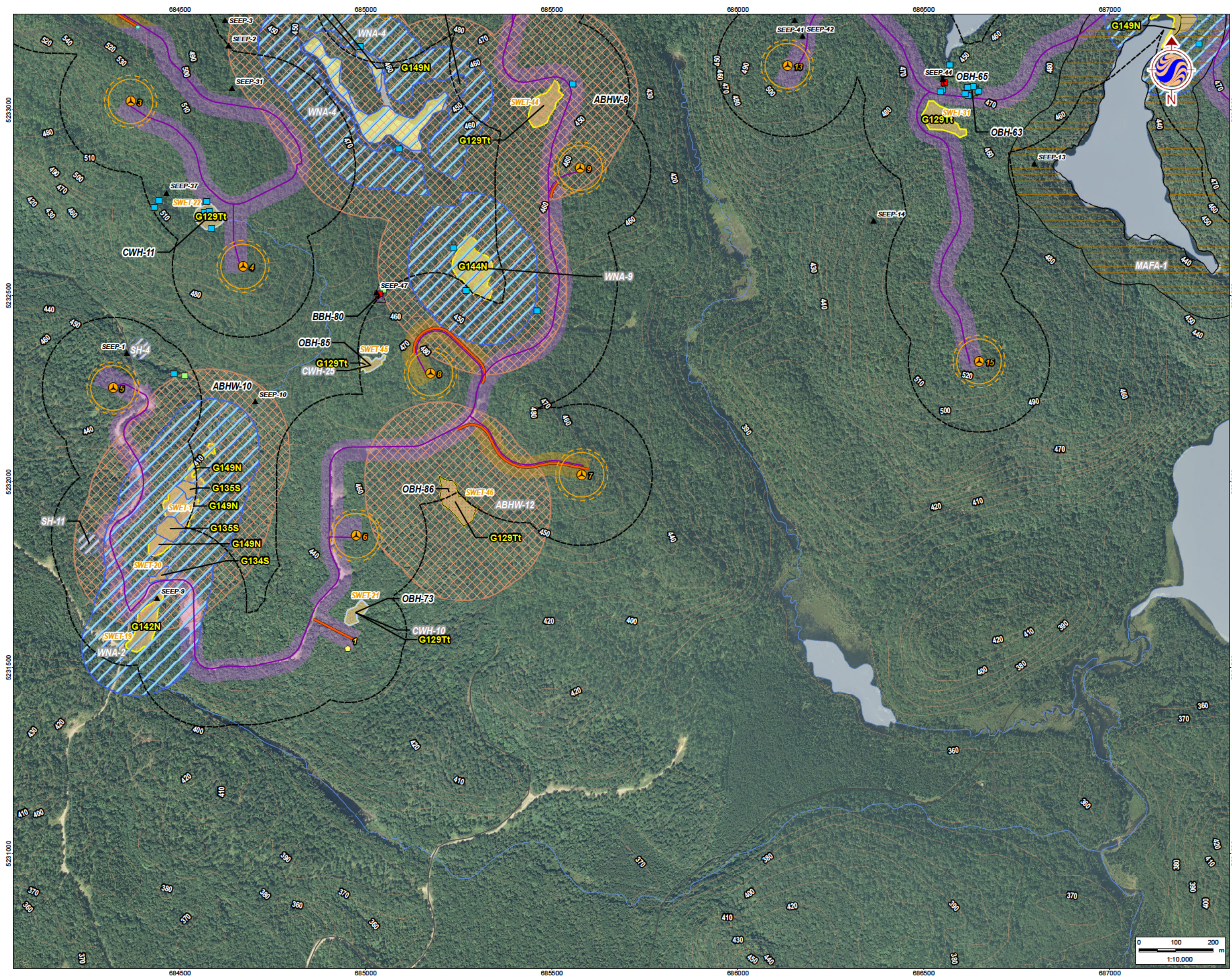
Stantec

January 2013
160960771

Client/Project
Bow Lake Wind Farm
Nodin Kitagan Limited Partnership and Nodin Kitagan 2
Limited Partnership, through their General Partners
Shongwish Nodin Kitagan GP Corp. and Shongwish
Nodin Kitagan 2 GP Corp.

Figure No.
6.4

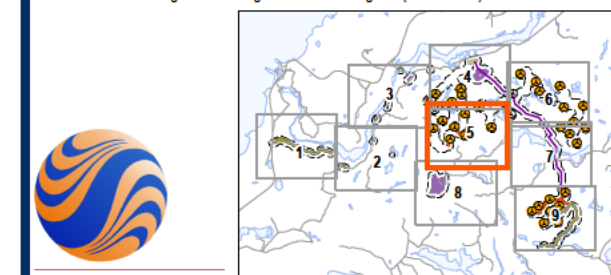
Title
**Significant Natural Heritage
Features and Attributes**



Legend

- 120m Zone of Investigation
- Project Components**
- Turbine Location
 - Gate Location
 - Meteorological Tower
 - Proposed Water Extraction Location
 - Access Road (New)
 - Access Road (Upgrade)
 - Overhead/Underground Collector Line
 - Access Road Corridor
 - Collector Line Corridor
 - Turbine Sweep Area
 - Turbine Laydown Area
 - Construction Compound
 - Construction Compound & Welfare Building
 - Construction Compound & Transformer
 - Station/Operations & Maintenance Building
- Existing Features**
- Expressway / Highway
 - Road
 - Elevation Contour
 - Existing Transmission Line
 - Watercourse
 - Waterbody
 - Patent Land
 - Vegetation Community Boundary
- Wetlands (delineated by Stantec - SWET)**
- Previously Significant Wetland - PSW
 - Previously Evaluated Wetland - Non-PSW
 - Previously Unidentified Wetland
 - Previously Unidentified Wetland Recommended for Inclusion in PSW
- Wildlife Habitat – Seasonal Concentration Areas**
- Snake Hibernaculum (SH)
 - Turtle Overwintering Area (TWA)
- Wildlife Habitat – Rare Vegetation Communities or Specialized Habitat for Wildlife**
- Moose Aquatic Feeding Area (MAFA)
 - Waterfowl Nesting Area (WNA)
 - Canada Warbler Habitat (CWH)
 - Olive-sided Flycatcher Habitat (OFH)
- Attributes Supporting Significant Wildlife Habitat**
- Seep
 - Boreal Bedstraw
 - Braun's Holly Fern
 - Oval-leaved Bilberry
 - Amphibian Breeding Habitat – Woodlands (ABHW)
- Species of Conservation Concern or Rare Birds**
- Marsh Bird Breeding Habitat (MBBH)
- ABHW-1** Black text, white halo = Confirmed Significant Feature
CWH-1 White text, grey halo = Assumed Significant Feature

- Notes**
- Coordinate System NAD 1983 UTM Zone 18N
 - Base features produced under license with the Ontario Ministry of Natural Resources © Queen's Printer for Ontario, 2013.
 - Orthographic imagery provided by © USGS, 2013. Imagery taken in 2008.
 - Breeding ponds in woodland habitats assumed throughout Zone of Investigation (not illustrated).
 - Forested breeding habitats throughout Zone of Investigation (not illustrated).



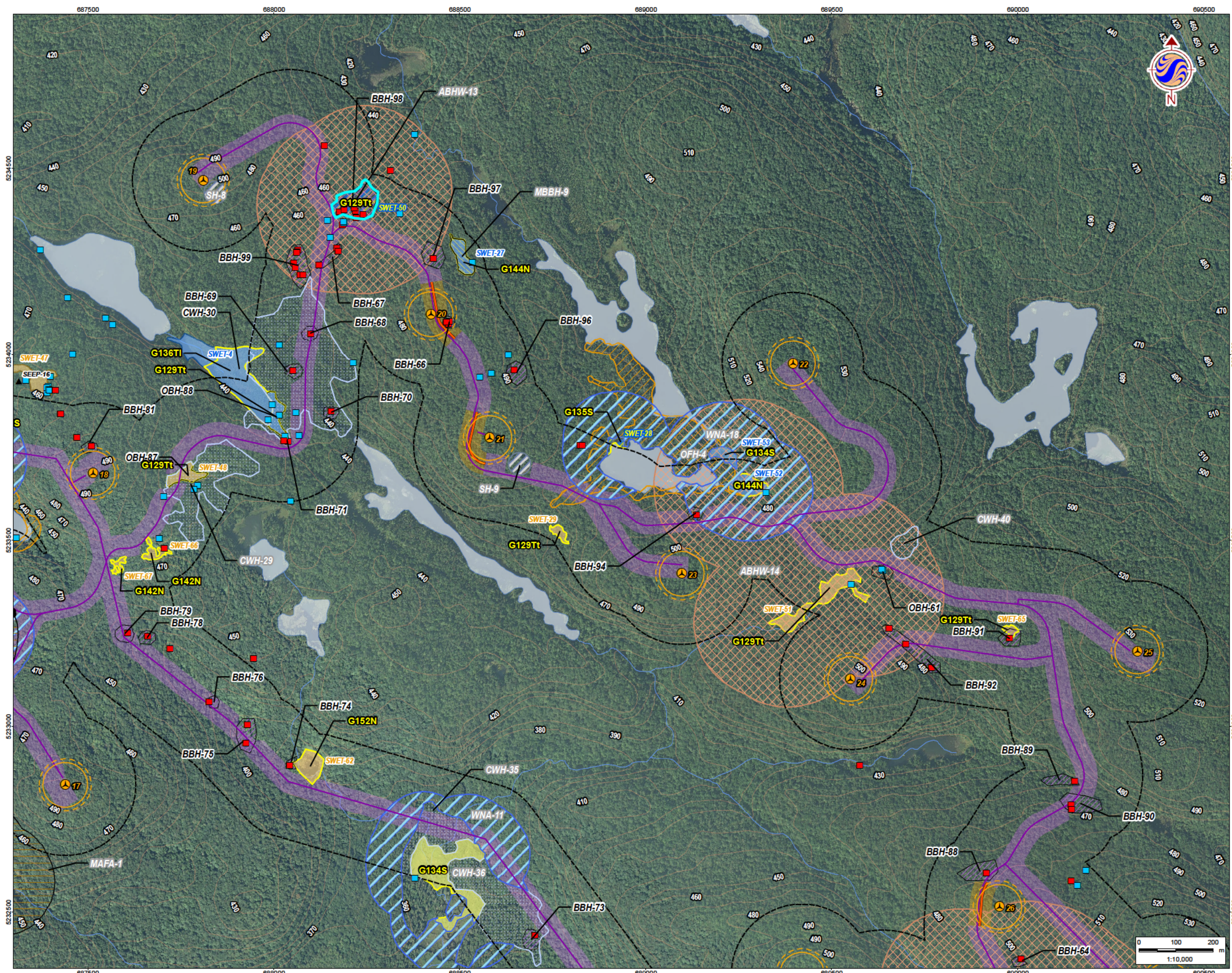
Stantec

January 2013
160960771

Client/Project
Bow Lake Wind Farm
Nodin Kitagan Limited Partnership and Nodin Kitagan 2
Limited Partnership, through their General Partners
Shongwish Nodin Kitagan GP Corp. and Shongwish
Nodin Kitagan 2 GP Corp.

Figure No.
6.5

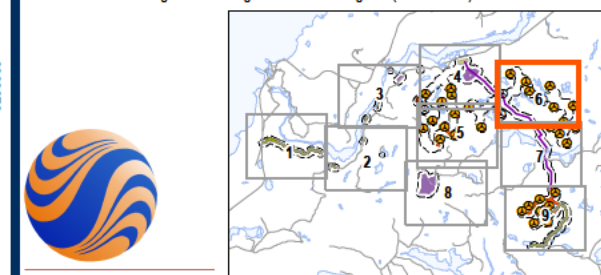
Title
**Significant Natural Heritage
Features and Attributes**



Legend

- 120m Zone of Investigation
- Project Components**
- Turbine Location
 - Gate Location
 - Meteorological Tower
 - Proposed Water Extraction Location
 - Access Road (New)
 - Access Road (Upgrade)
 - Overhead/Underground Collector Line
 - Access Road Corridor
 - Collector Line Corridor
 - Turbine Sweep Area
 - Turbine Laydown Area
 - Construction Compound
 - Construction Compound & Welfare Building
 - Construction Compound & Transformer
 - Station/Operations & Maintenance Building
- Existing Features**
- Expressway / Highway
 - Road
 - Elevation Contour
 - Existing Transmission Line
 - Watercourse
 - Waterbody
 - Patent Land
 - Vegetation Community Boundary
- Wetlands (delineated by Stantec - SWET)**
- Previously Significant Wetland - PSW
 - Previously Evaluated Wetland - Non-PSW
 - Previously Unidentified Wetland
 - Previously Unidentified Wetland Recommended for Inclusion in PSW
- Wildlife Habitat - Seasonal Concentration Areas**
- Snake Hibernaculum (SH)
 - Turtle Overwintering Area (TWA)
- Wildlife Habitat - Rare Vegetation Communities or Specialized Habitat for Wildlife**
- Moose Aquatic Feeding Area (MAFA)
 - Waterfowl Nesting Area (WNA)
 - Canada Warbler Habitat (CWH)
 - Olive-sided Flycatcher Habitat (OFH)
- Attributes Supporting Significant Wildlife Habitat**
- Seep
 - Boreal Bedstraw
 - Braun's Holly Fern
 - Oval-leaved Bilberry
- Species of Conservation Concern or Rare Birds**
- Amphibian Breeding Habitat - Woodlands (ABHW)
 - Marsh Bird Breeding Habitat (MBBH)
- ABHW-1** Black text, white halo = Confirmed Significant Feature
- CWH-1** White text, grey halo = Assumed Significant Feature

- Notes**
- Coordinate System: NAD 1983 UTM Zone 18N
 - Base features produced under license with the Ontario Ministry of Natural Resources
 - Queen's Printer for Ontario, 2013
 - Orthographic imagery provided by © USGS, 2013. Imagery taken in 2008.
 - Breeding ponds in woodland habitats assumed throughout Zone of Investigation (not illustrated).
 - Forested breeding habitats throughout Zone of Investigation (not illustrated).



Stantec

January 2013
160960771

Client/Project
Bow Lake Wind Farm
Nodin Kitagan Limited Partnership and Nodin Kitagan 2
Limited Partnership, through their General Partners
Shongwish Nodin Kitagan GP Corp. and Shongwish
Nodin Kitagan 2 GP Corp.

Figure No.
6.6

Title
**Significant Natural Heritage
Features and Attributes**