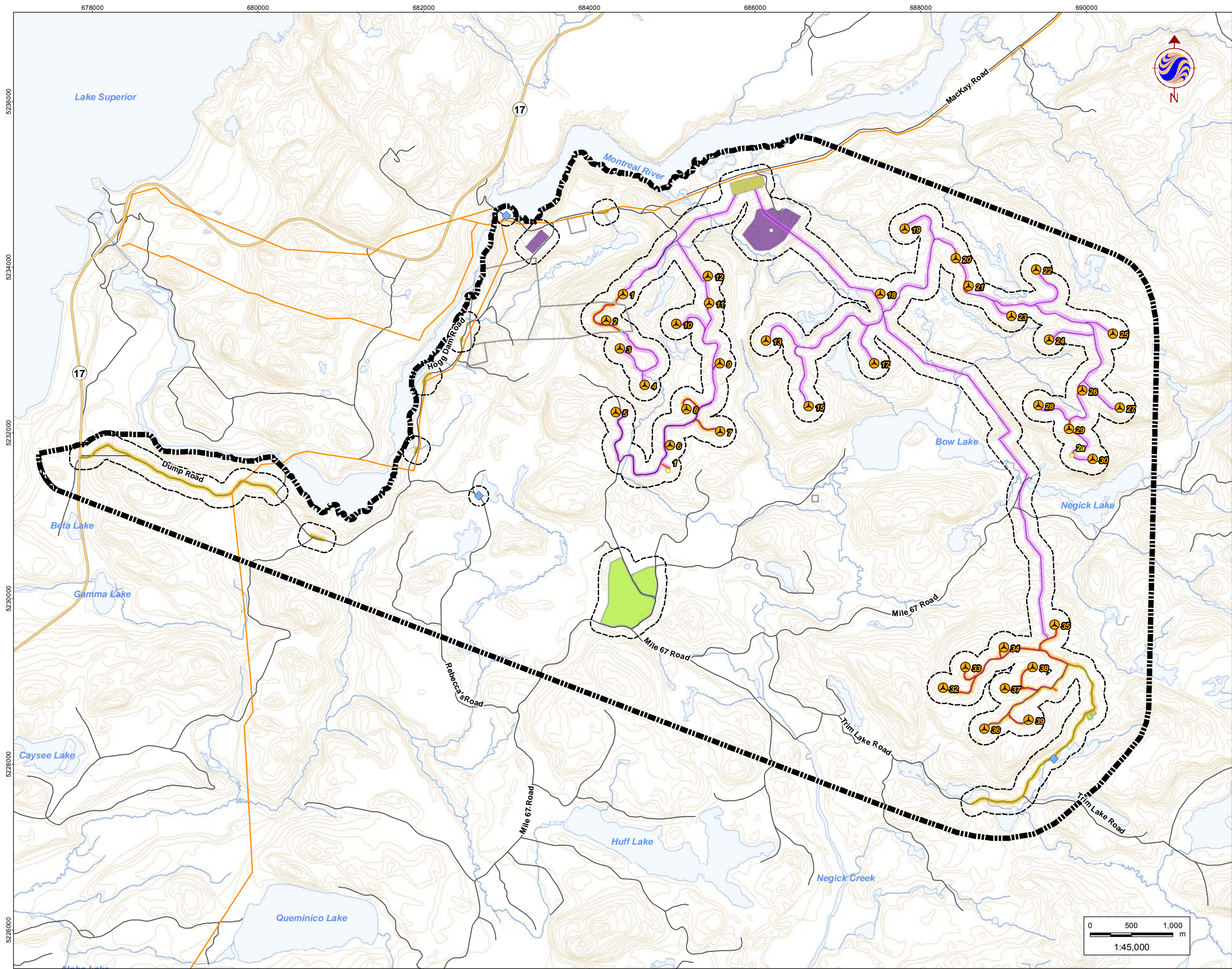


# **Appendix A**

## **Figures**





W:\active\60960734\drawing\MXD\Aquatics\WaterReport\160960771\_Fig1\_ProjectLocation\_20130123.mxd  
Revised: 2013-01-23 By: pworsell

## Legend

- Study Area
- 120m Zone of Investigation
- Project Components**
  - Turbine Location
  - Gate Location
  - Meteorological Tower
  - Proposed Water Extraction Location
  - Access Road (New)
  - Access Road (Upgrade)
  - Overhead/Underground Collector Line
  - Access Road Corridor
  - Collector Line Corridor
  - Construction Compound
  - Construction Compound & Welfare Building
  - Construction Compound & Transformer Station/Operations & Maintenance Building
- Existing Features**
  - Expressway / Highway
  - Road
  - Elevation Contour
  - Existing Transmission Line
  - Watercourse
  - Waterbody
  - Patent Land

## Notes

- Coordinate System: NAD 1983 UTM Zone 16N
- Base features produced under license with the Ontario Ministry of Natural Resources © Queen's Printer for Ontario, 2013.



**Stantec**

January 2013  
160960771

Client/Project  
Bow Lake Wind Farm  
Nodin Kitagan Limited Partnership and Nodin Kitagan 2  
Limited Partnership, through their General Partners  
Shongwish Nodin Kitagan GP Corp. and Shongwish  
Nodin Kitagan 2 GP Corp.

Figure No.  
1.0

Title  
**Project Location & Study Area -  
Overview**









## Legend

120m Zone of Investigation

### Project Components

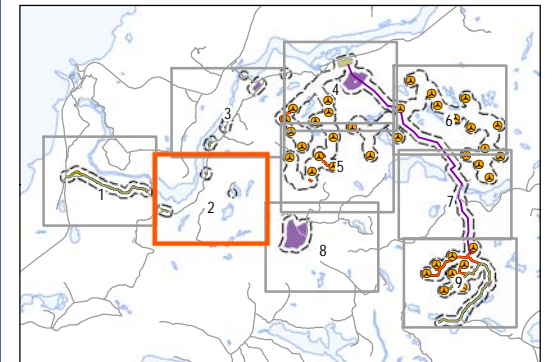
- Turbine Location
- Gate Location
- Meteorological Tower
- Proposed Water Extraction Location
- Access Road (New)
- Access Road (Upgrade)
- Overhead/Underground Collector Line
- Access Road Corridor
- Collector Line Corridor
- Turbine Sweep Area
- Turbine Laydown Area
- Construction Compound
- Construction Compound & Welfare Building
- Construction Compound & Transformer Station/Operations & Maintenance Building

### Existing Features

- Expressway / Highway
- Road
- Elevation Contour
- Existing Transmission Line
- Watercourse
- Waterbody
- Patent Land

### Water Bodies

- REA Water Body
- Not a REA Water Body



## Notes

- Coordinate System: NAD 1983 UTM Zone 16N
- Base features produced under license with the Ontario Ministry of Natural Resources © Queen's Printer for Ontario, 2013.
- Orthographic imagery provided by © USGS, 2013. Imagery taken in 2008.



**Stantec**

January 2013  
160960771

Client/Project

Bow Lake Wind Farm  
Nodin Kitagan Limited Partnership and Nodin Kitagan 2  
Limited Partnership, through their General Partners  
Shongwish Nodin Kitagan GP Corp. and Shongwish  
Nodin Kitagan 2 GP Corp.

Figure No.

2.2

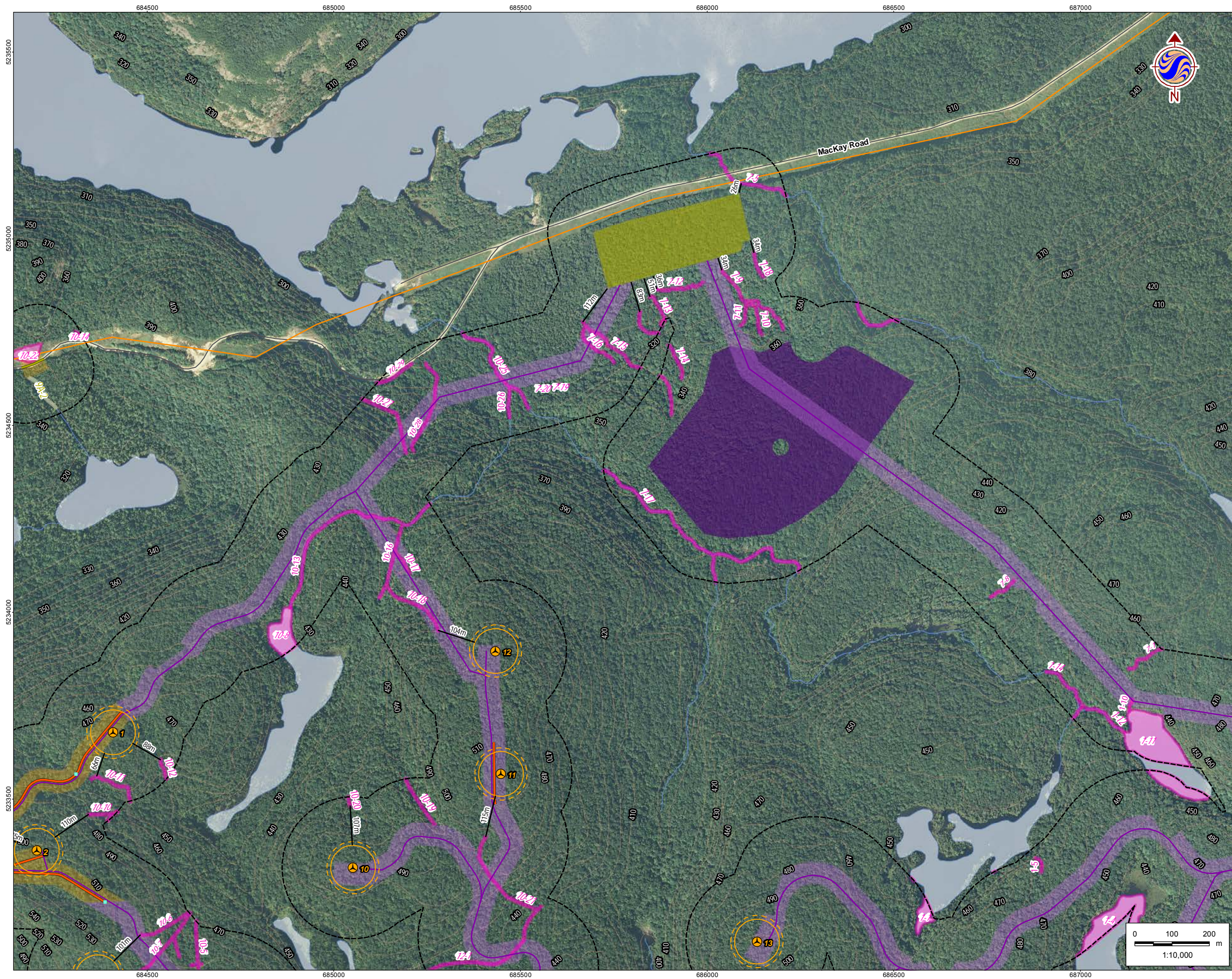
Title

**Water Body Assessment**



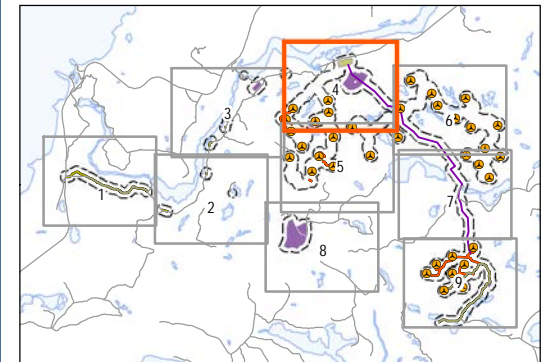






## Legend

- 120m Zone of Investigation
- Project Components**
  - Turbine Location
  - Gate Location
  - Meteorological Tower
  - Proposed Water Extraction Location
  - Access Road (New)
  - Access Road (Upgrade)
  - Overhead/Underground Collector Line
  - Access Road Corridor
  - Collector Line Corridor
  - Turbine Sweep Area
  - Turbine Laydown Area
  - Construction Compound
  - Construction Compound & Welfare Building
  - Construction Compound & Transformer Station/Operations & Maintenance Building
- Existing Features**
  - Expressway / Highway
  - Road
  - Elevation Contour
  - Existing Transmission Line
  - Watercourse
  - Waterbody
  - Patent Land
- Water Bodies**
  - REA Water Body
  - Not a REA Water Body



## Notes

- Coordinate System: NAD 1983 UTM Zone 16N
- Base features produced under license with the Ontario Ministry of Natural Resources © Queen's Printer for Ontario, 2013.
- Orthographic imagery provided by © USGS, 2013. Imagery taken in 2008.



**Stantec**

January 2013  
160960771

Client/Project

Bow Lake Wind Farm  
Nodin Kitagan Limited Partnership and Nodin Kitagan 2  
Limited Partnership, through their General Partners  
Shongwish Nodin Kitagan GP Corp. and Shongwish  
Nodin Kitagan 2 GP Corp.

Figure No.

**2.4**

Title

**Water Body Assessment**





## Legend

120m Zone of Investigation

### Project Components

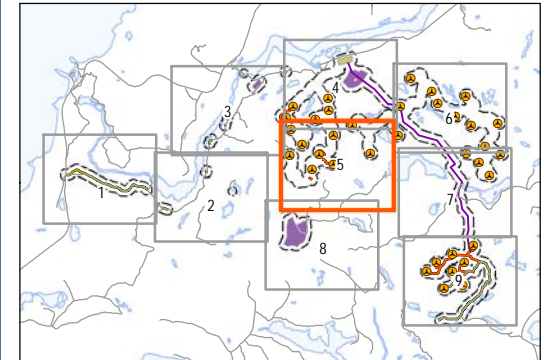
- Turbine Location
- Gate Location
- Meteorological Tower
- Proposed Water Extraction Location
- Access Road (New)
- Access Road (Upgrade)
- Overhead/Underground Collector Line
- Access Road Corridor
- Collector Line Corridor
- Turbine Sweep Area
- Turbine Laydown Area
- Construction Compound
- Construction Compound & Welfare Building
- Construction Compound & Transformer Station/Operations & Maintenance Building

### Existing Features

- Expressway / Highway
- Road
- Elevation Contour
- Existing Transmission Line
- Watercourse
- Waterbody
- Patent Land

### Water Bodies

- REA Water Body
- Not a REA Water Body



### Notes

- Coordinate System: NAD 1983 UTM Zone 16N
- Base features produced under license with the Ontario Ministry of Natural Resources © Queen's Printer for Ontario, 2013.
- Orthographic imagery provided by © USGS, 2013. Imagery taken in 2008.



**Stantec**

January 2013  
160960771

Client/Project

Bow Lake Wind Farm  
Nodin Kitagan Limited Partnership and Nodin Kitagan 2  
Limited Partnership, through their General Partners  
Shongwish Nodin Kitagan GP Corp. and Shongwish  
Nodin Kitagan 2 GP Corp.

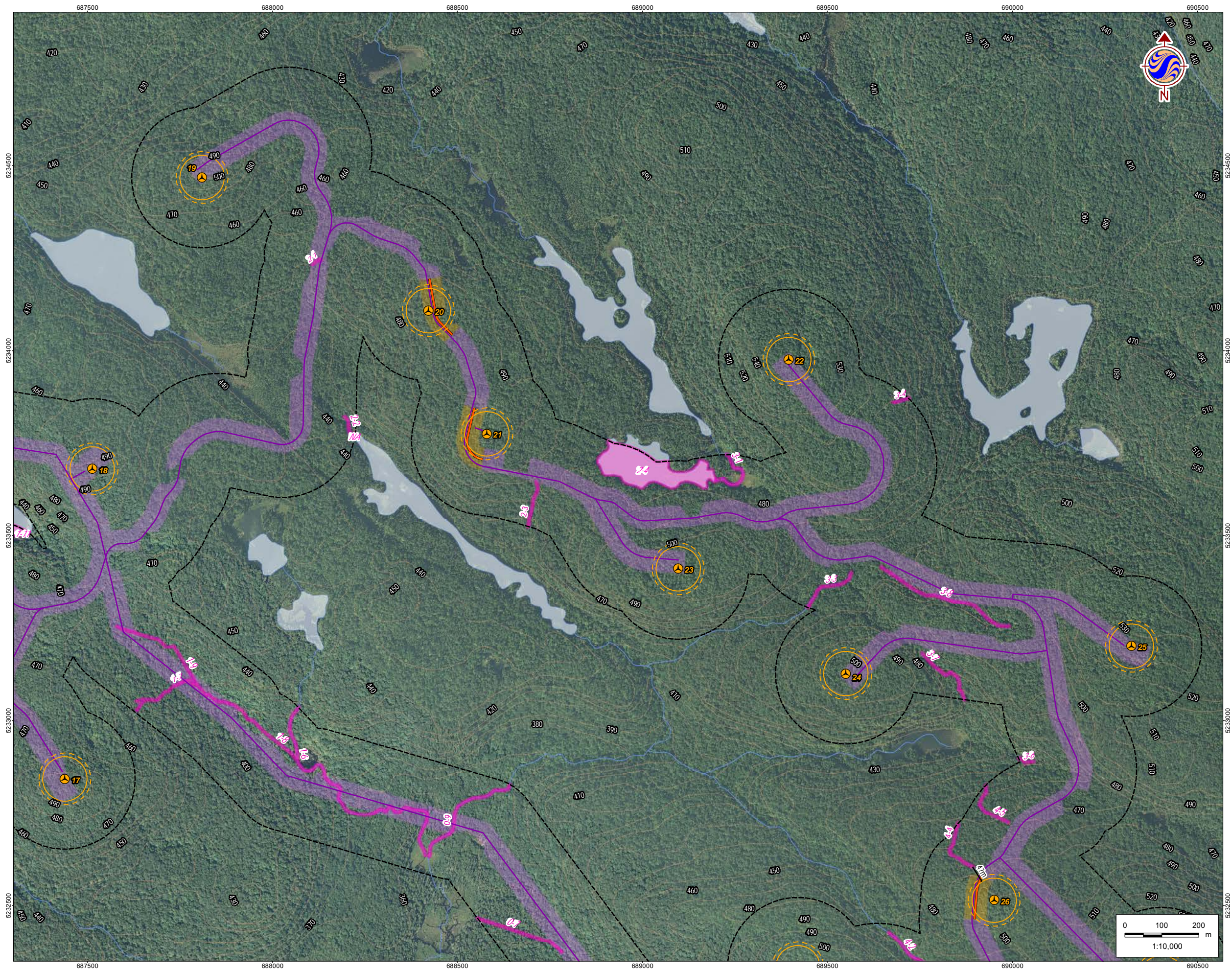
Figure No.

**2.5**

Title

**Water Body Assessment**





## Legend

120m Zone of Investigation

### Project Components

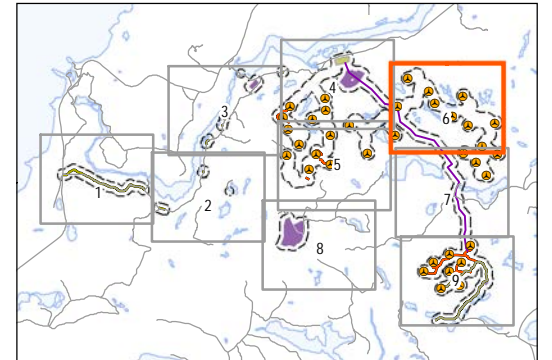
- Turbine Location
- Gate Location
- Meteorological Tower
- Proposed Water Extraction Location
- Access Road (New)
- Access Road (Upgrade)
- Overhead/Underground Collector Line
- Access Road Corridor
- Collector Line Corridor
- Turbine Sweep Area
- Turbine Laydown Area
- Construction Compound
- Construction Compound & Welfare Building
- Construction Compound & Transformer Station/Operations & Maintenance Building

### Existing Features

- Expressway / Highway
- Road
- Elevation Contour
- Existing Transmission Line
- Watercourse
- Waterbody
- Patent Land

### Water Bodies

- REA Water Body
- Not a REA Water Body



## Notes

- Coordinate System: NAD 1983 UTM Zone 16N
- Base features produced under license with the Ontario Ministry of Natural Resources © Queen's Printer for Ontario, 2013.
- Orthographic imagery provided by © USGS, 2013. Imagery taken in 2008.



**Stantec**

January 2013  
160960771

Client/Project

Bow Lake Wind Farm  
Nodin Kitagan Limited Partnership and Nodin Kitagan 2  
Limited Partnership, through their General Partners  
Shongwish Nodin Kitagan GP Corp. and Shongwish  
Nodin Kitagan 2 GP Corp.

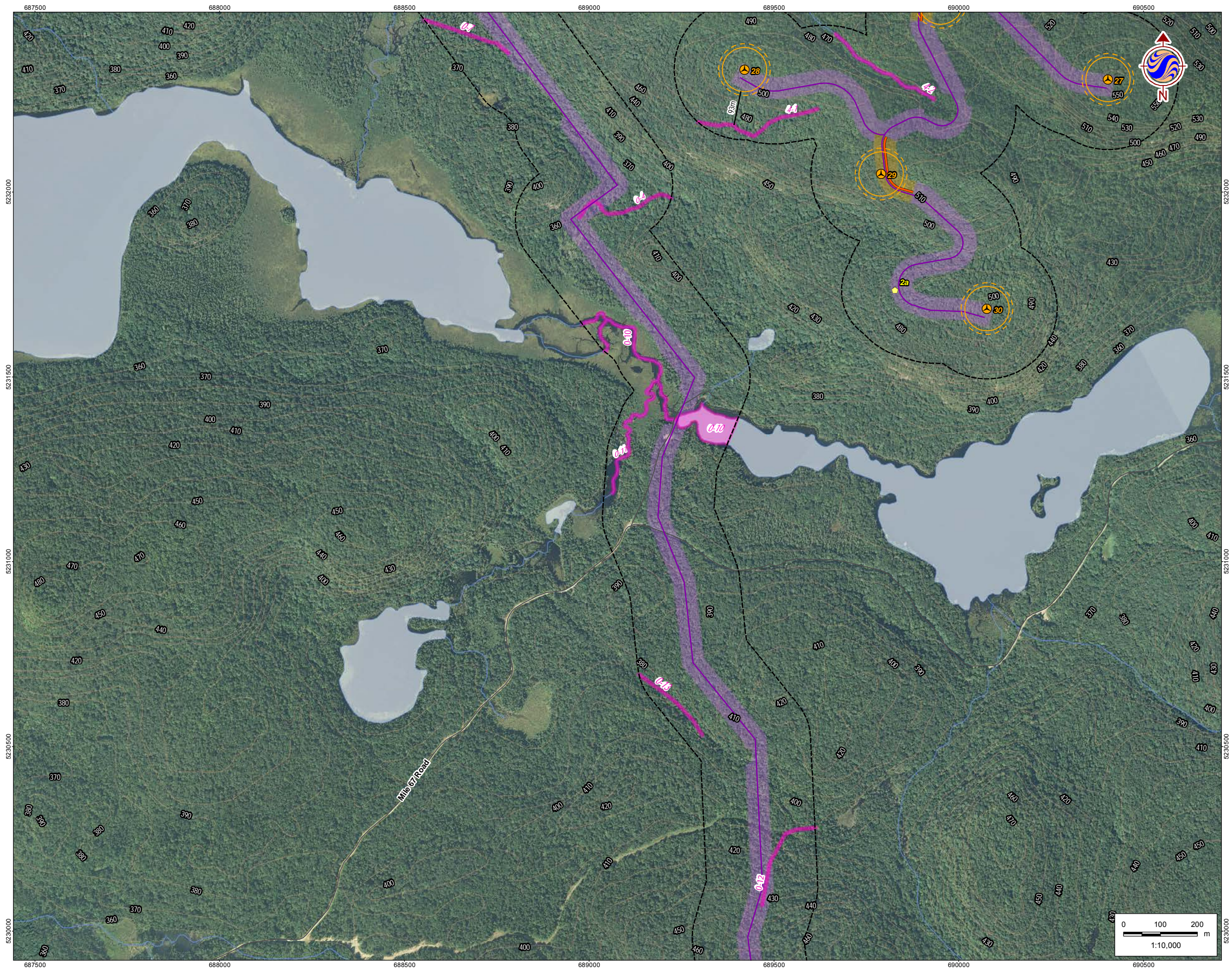
Figure No.

2.6

Title

**Water Body Assessment**





### Legend

120m Zone of Investigation

Turbine Location

Gate Location

Meteorological Tower

Proposed Water Extraction Location

Access Road (New)

Access Road (Upgrade)

Overhead/Underground Collector Line

Access Road Corridor

Collector Line Corridor

Turbine Sweep Area

Turbine Laydown Area

Construction Compound

Construction Compound & Welfare Building

Construction Compound & Transformer Station/Operations & Maintenance Building

Expressway / Highway

Road

Elevation Contour

Existing Transmission Line

Watercourse

Waterbody

Patent Land

Water Bodies

REA Water Body

Not a REA Water Body

### Notes

1. Coordinate System: NAD 1983 UTM Zone 16N

2. Base features produced under license with the Ontario Ministry of Natural Resources © Queen's Printer for Ontario, 2013.

3. Orthographic imagery provided by © USGS, 2013. Imagery taken in 2008.

January 2013  
160960771

Client/Project

Bow Lake Wind Farm  
Nodin Kitagan Limited Partnership and Nodin Kitagan 2  
Limited Partnership, through their General Partners  
Shongwish Nodin Kitagan GP Corp. and Shongwish  
Nodin Kitagan 2 GP Corp.

Figure No.

2.7

Title

Water Body Assessment

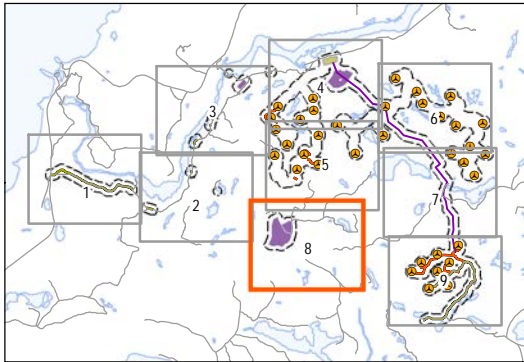
W:\active\160960734\drawing\MXD\Aquatics\WaterReport\160960771\_Fig2\_WaterBodies\_20130123.mxd  
Revised: 2013-01-24 By: pworsell





## Legend

- 120m Zone of Investigation
- Project Components**
- Turbine Location
  - Gate Location
  - Meteorological Tower
  - Proposed Water Extraction Location
  - Access Road (New)
  - Access Road (Upgrade)
  - Overhead/Underground Collector Line
  - Access Road Corridor
  - Collector Line Corridor
  - Turbine Sweep Area
  - Turbine Laydown Area
  - Construction Compound
  - Construction Compound & Welfare Building
  - Construction Compound & Transformer Station/Operations & Maintenance Building
- Existing Features**
- Expressway / Highway
  - Road
  - Elevation Contour
  - Existing Transmission Line
  - Watercourse
  - Waterbody
  - Patent Land
- Water Bodies**
- REA Water Body
  - Not a REA Water Body



## Notes

- Coordinate System: NAD 1983 UTM Zone 16N
- Base features produced under license with the Ontario Ministry of Natural Resources © Queen's Printer for Ontario, 2013.
- Orthographic imagery provided by © USGS, 2013. Imagery taken in 2008.



**Stantec**

January 2013  
160960771

Client/Project

Bow Lake Wind Farm  
Nodin Kitagan Limited Partnership and Nodin Kitagan 2  
Limited Partnership, through their General Partners  
Shongwish Nodin Kitagan GP Corp. and Shongwish  
Nodin Kitagan 2 GP Corp.

Figure No.

2.8

Title

**Water Body Assessment**





## Legend

120m Zone of Investigation

### Project Components

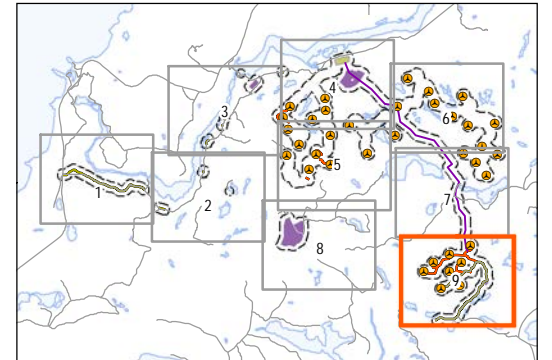
- Turbine Location
- Gate Location
- Meteorological Tower
- Proposed Water Extraction Location
- Access Road (New)
- Access Road (Upgrade)
- Overhead/Underground Collector Line
- Access Road Corridor
- Collector Line Corridor
- Turbine Sweep Area
- Turbine Laydown Area
- Construction Compound
- Construction Compound & Welfare Building
- Construction Compound & Transformer Station/Operations & Maintenance Building

### Existing Features

- Expressway / Highway
- Road
- Elevation Contour
- Existing Transmission Line
- Watercourse
- Waterbody
- Patent Land

### Water Bodies

- REA Water Body
- Not a REA Water Body



## Notes

- Coordinate System: NAD 1983 UTM Zone 16N
- Base features produced under license with the Ontario Ministry of Natural Resources © Queen's Printer for Ontario, 2013.
- Orthographic imagery provided by © USGS, 2013. Imagery taken in 2008.



**Stantec**

January 2013  
160960771

Client/Project

Bow Lake Wind Farm  
Nodin Kitagan Limited Partnership and Nodin Kitagan 2  
Limited Partnership, through their General Partners  
Shongwish Nodin Kitagan GP Corp. and Shongwish  
Nodin Kitagan 2 GP Corp.

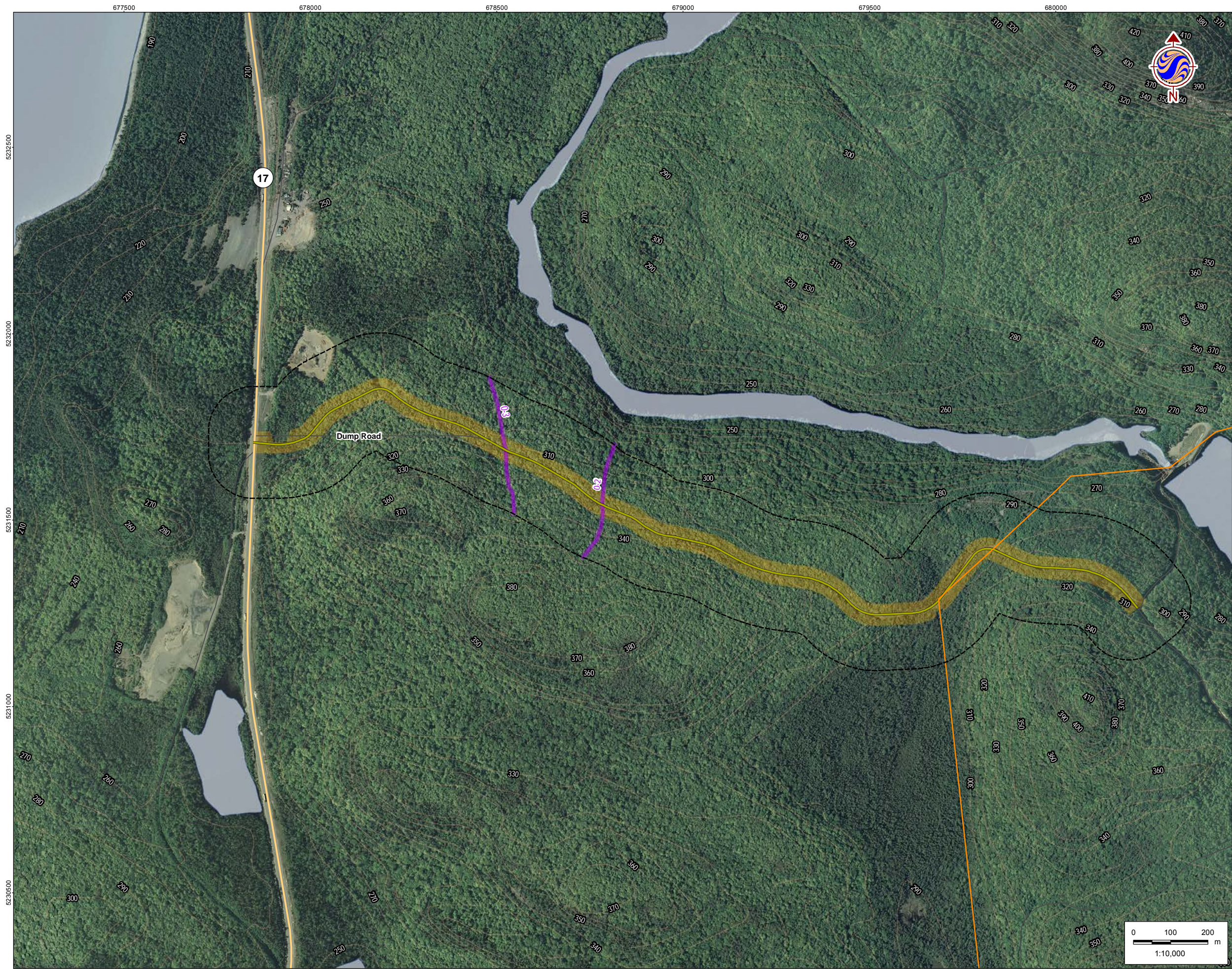
Figure No.

2.9

Title

**Water Body Assessment**





**Legend**

120m Zone of Investigation

**Project Components**

Turbine Location

Gate Location

Meteorological Tower

Proposed Water Extraction Location

Access Road (New)

Access Road (Upgrade)

Overhead/Underground Collector Line

Access Road Corridor

Collector Line Corridor

Turbine Sweep Area

Turbine Laydown Area

Construction Compound

Construction Compound & Welfare Building

Construction Compound & Transformer Station/Operations & Maintenance Building

**Existing Features**

Expressway / Highway

Road

Elevation Contour

Existing Transmission Line

Watercourse

Waterbody

Patent Land

**Fish Habitat**

Directly Contributes to Fish Habitat

An inset map shows the project area's location within a larger regional context. The map is divided into numbered boxes (1-8). Box 1, highlighted with an orange border, indicates the specific area shown in the main map. Other boxes show surrounding areas and features.

**Notes**

1. Coordinate System: NAD 1983 UTM Zone 16N

2. Base features produced under license with the Ontario Ministry of Natural Resources © Queen's Printer for Ontario, 2013.

3. Orthographic imagery provided by © USGS, 2013. Imagery taken in 2008.

The Stantec logo, featuring a stylized blue and orange globe icon above the word 'Stantec' in a bold, sans-serif font.

Client/Project

Bow Lake Wind Farm  
Nodin Kitagan Limited Partnership and Nodin Kitagan 2  
Limited Partnership, through their General Partners  
Shongwish Nodin Kitagan GP Corp. and Shongwish  
Nodin Kitagan 2 GP Corp.

Figure No.

3.1

Title

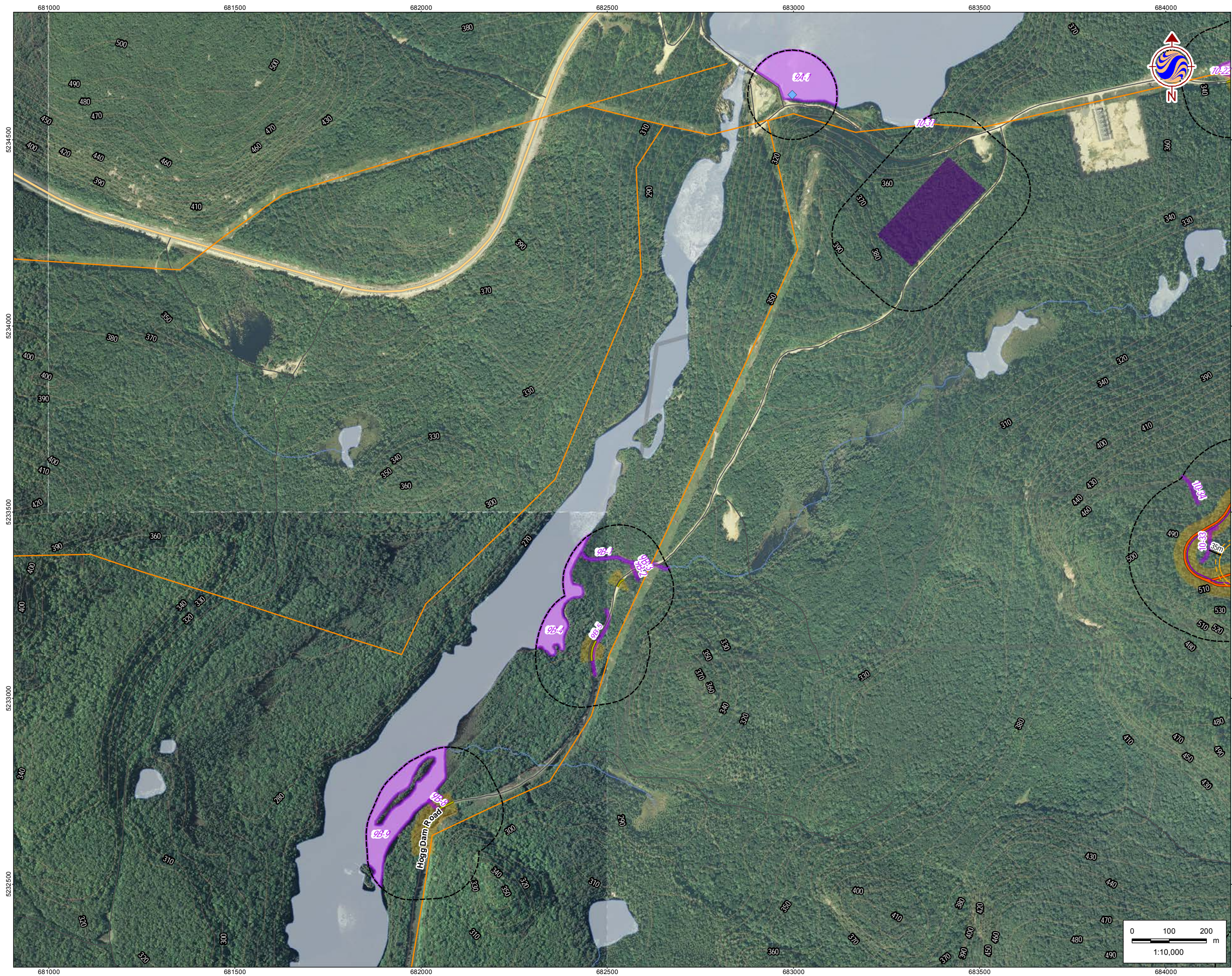
Fish Habitat

W:\active\60960734\drawing\MXD\Aquatics\WaterReport\160960771\_Fig3\_FishHabitat\_20130123.mxd  
Revised: 2013-01-24 By: pworsell









**Legend**

120m Zone of Investigation

Turbine Location

Gate Location

Meteorological Tower

Proposed Water Extraction Location

Access Road (New)

Access Road (Upgrade)

Overhead/Underground Collector Line

Access Road Corridor

Collector Line Corridor

Turbine Sweep Area

Turbine Laydown Area

Construction Compound

Construction Compound & Welfare Building

Construction Compound & Transformer Station/Operations & Maintenance Building

Expressway / Highway

Road

Elevation Contour

Existing Transmission Line

Watercourse

Waterbody

Patent Land

Fish Habitat

Directly Contributes to Fish Habitat

1

2

3

4

5

6

7

8

9

10

11

12

13

14

15

16

17

18

19

20

21

22

23

24

25

26

27

28

29

30

31

32

33

34

35

36

37

38

39

40

41

42

43

44

45

46

47

48

49

50

51

52

53

54

55

56

57

58

59

60

61

62

63

64

65

66

67

68

69

70

71

72

73

74

75

76

77

78

79

80

81

82

83

84

85

86

87

88

89

90

91

92

93

94

95

96

97

98

99

100

1

2

3

4

5

6

7

8

9

10

11

12

13

14

15

16

17

18

19

20

21

22

23

24

25

26

27

28

29

30

31

32

33

34

35

36

37

38

39

40

41

42

43

44

45

46

47

48

49

50

51

52

53

54

55

56

57

58

59

60

61

62

63

64

65

66

67

68

69

70

71

72

73

74

75

76

77

78

79

80

81

82

83

84

85

86

87

88

89

90

91

92

93

94

95

96

97

98

99

100

1

2

3

4

5

6

7

8

9

10

11

12

13

14

15

16

17

18

19

20

21

22

23

24

25

26

27

28

29

30

31

32

33

34

35

36

37

38

39

40

41

42

43

44

45

46

47

48

49

50

51

52

53

54

55

56

57

58

59

60

61

62

63

64

65

66

67

68

69

70

71

72

73

74

75

76

77

78

79

80

81

82

83

84

85

86

87

88

89

90

91

92

93

94

95

96

97

98

99

100

1

2

3

4

5

6

7

8

9

10

11

12

13

14

15

16

17

18

19

20

21

22

23

24

25

26

27

28

29

30

31

32

33

34

35

36

37

38

39

40

41

42

43

44

45

46

47

48

49

50

51

52

53

54

55

56

57

58

59

60

61

62

63

64

65

66

67

68

69

70

71

72

73

74

75

76

77

78

79

80

81

82

83

84

85

86

87

88

89

90

91

92

93

94

95

96

97

98

99

100

1

2

3

4

5

6

7

8

9

10

11

12

13

14

15

16

17

18

19

20

21

22

23

24

25

26

27

28

29

30

31

32

33

34

35

36

37

38

39

40

41

42

43

44

45

46

47

48

49

50

51

52

53

54

55

56

57

58

59

60

61

62

63

64

65

66

67

68

69

70

71

72

73

74

75

76

77

78

79

80

81

82

83

84

85

86

87

88

89

90

91

92

93

94

95

96

97

98

99

100

1

2

3

4

5

6

7

8

9

10

11

12

13

14

15

16

17

18

19

20

21

22

23

24

25

26

27

28

29

30

31

32

33

34

35

36

37

38

39

40

41

42

43

44

45

46

47

48

49

50

51

52

53

54

55

56

57

58

59

60

61

62

63

64

65

66

67

68

69

70

71

72

73

74

75

76

77

78

79

80

81

82

83

84

85

86

87

88

89

90

91

92

93

94

95

96

97

98

99

100

1

2

3

4

5

6

7

8

9

10

11

12

13

14

15

16

17

18

19

20

21

22

23

24

25

26

27

28

29

30

31

32

33

34

35

36

37

38

39

40

41

42

43

44

45

46

47

48

49

50

51

52

53

54

55

56

57

58

59

60

61

62

63

64

65

66

67

68

69

70

71

72

73

74

75

76

77

78

79

80

81

82

83

84

85

86

87

88

89

90

91

92

93

94

95

96

97

98

99

100

1

2

3

4

5

6

7

8

9

10

11

12

13

14

15

16

17

18

19

20

21

22

23

24

25

26

27

28

29

30

31

32

33

34

35

36

37

38

39

40

41

42

43

44

45

46

47

48

49

50

51

52

53

54

55

56

57

58

59

60

61

62

63

64

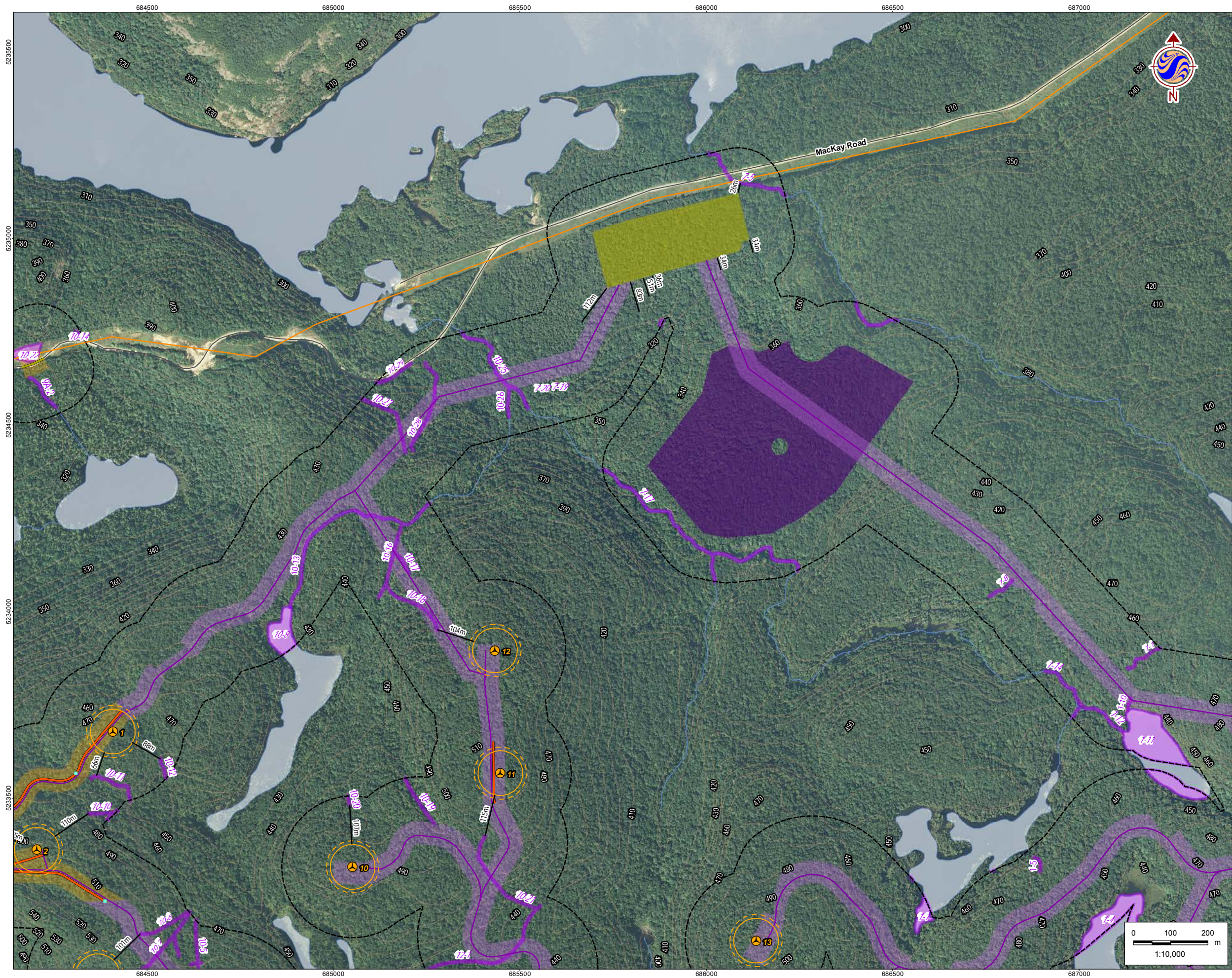
65

66

67

68





## Legend

120m Zone of Investigation

### Project Components

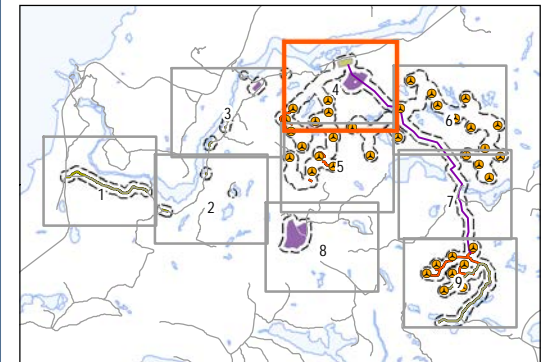
- Turbine Location
- Gate Location
- Meteorological Tower
- Proposed Water Extraction Location
- Access Road (New)
- Access Road (Upgrade)
- Overhead/Underground Collector Line
- Access Road Corridor
- Collector Line Corridor
- Turbine Sweep Area
- Turbine Laydown Area
- Construction Compound
- Construction Compound & Welfare Building
- Construction Compound & Transformer Station/Operations & Maintenance Building

### Existing Features

- Expressway / Highway
- Road
- Elevation Contour
- Existing Transmission Line
- Watercourse
- Waterbody
- Patent Land

### Fish Habitat

- Directly Contributes to Fish Habitat



## Notes

- Coordinate System: NAD 1983 UTM Zone 16N
- Base features produced under license with the Ontario Ministry of Natural Resources © Queen's Printer for Ontario, 2013.
- Orthographic imagery provided by © USGS, 2013. Imagery taken in 2008.



**Stantec**

January 2013  
160960771

Client/Project

Bow Lake Wind Farm  
Nodin Kitagan Limited Partnership and Nodin Kitagan 2  
Limited Partnership, through their General Partners  
Shongwish Nodin Kitagan GP Corp. and Shongwish  
Nodin Kitagan 2 GP Corp.

Figure No.

**3.4**

Title

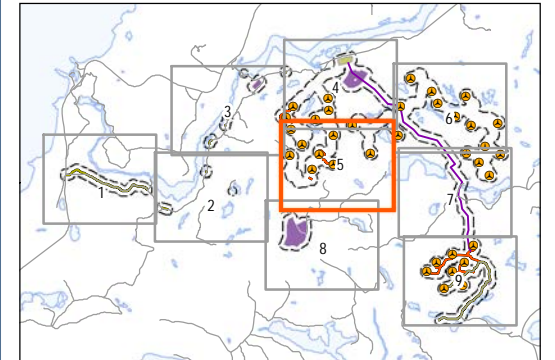
**Fish Habitat**





## Legend

- 120m Zone of Investigation
- Project Components**
- Turbine Location
  - Gate Location
  - Meteorological Tower
  - Proposed Water Extraction Location
  - Access Road (New)
  - Access Road (Upgrade)
  - Overhead/Underground Collector Line
  - Access Road Corridor
  - Collector Line Corridor
  - Turbine Sweep Area
  - Turbine Laydown Area
  - Construction Compound
  - Construction Compound & Welfare Building
  - Construction Compound & Transformer Station/Operations & Maintenance Building
- Existing Features**
- Expressway / Highway
  - Road
  - Elevation Contour
  - Existing Transmission Line
  - Watercourse
  - Waterbody
  - Patent Land
- Fish Habitat**
- Directly Contributes to Fish Habitat



## Notes

- Coordinate System: NAD 1983 UTM Zone 16N
- Base features produced under license with the Ontario Ministry of Natural Resources © Queen's Printer for Ontario, 2013.
- Orthographic imagery provided by © USGS, 2013. Imagery taken in 2008.



**Stantec**

January 2013  
160960771

Client/Project

Bow Lake Wind Farm  
Nodin Kitagan Limited Partnership and Nodin Kitagan 2  
Limited Partnership, through their General Partners  
Shongwish Nodin Kitagan GP Corp. and Shongwish  
Nodin Kitagan 2 GP Corp.

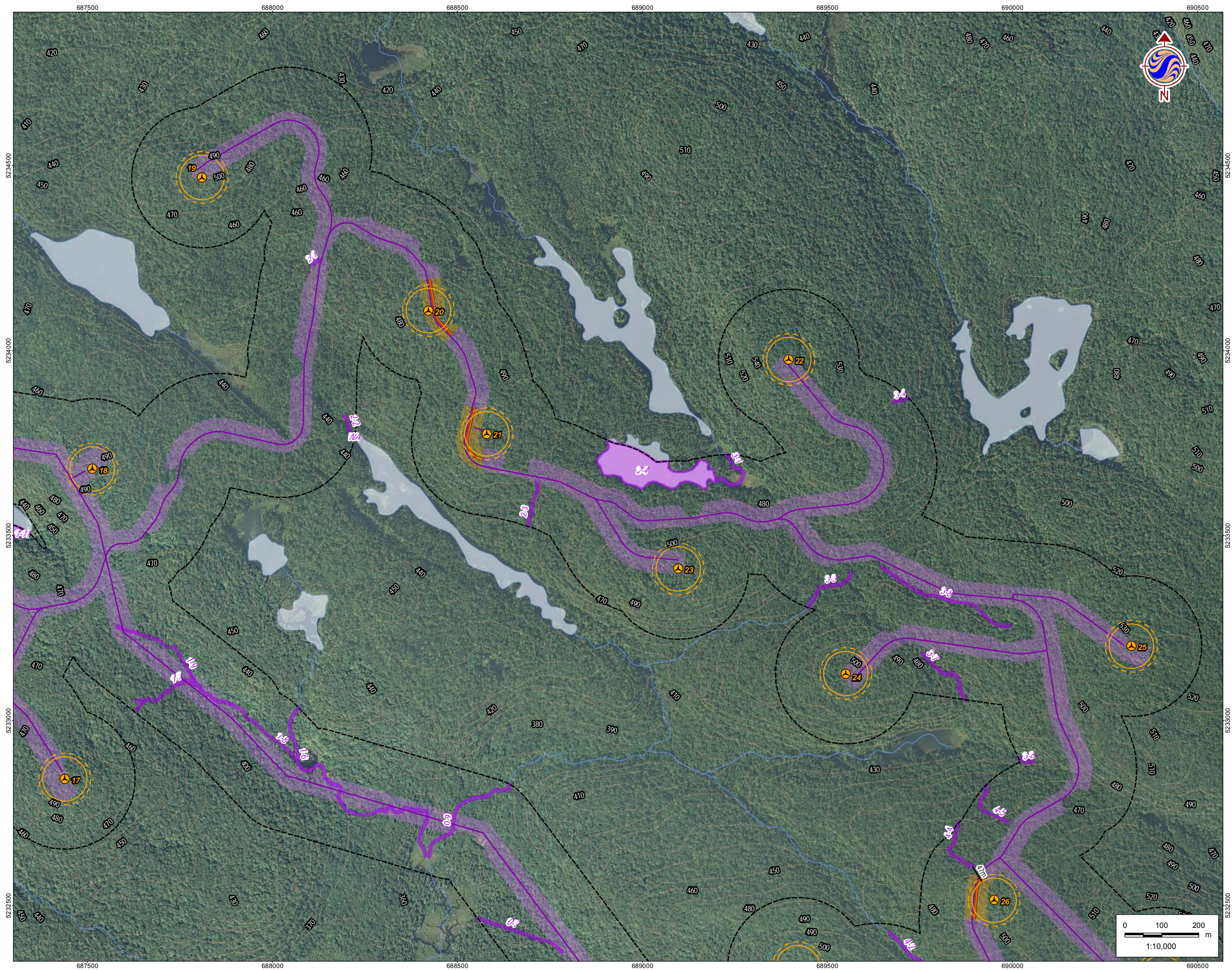
Figure No.

**3.5**

Title

**Fish Habitat**





## Legend

120m Zone of Investigation

### Project Components

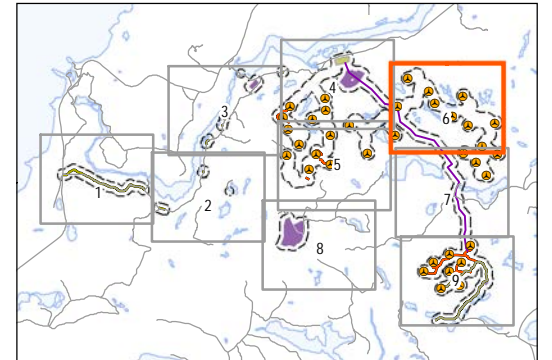
- Turbine Location
- Gate Location
- Meteorological Tower
- Proposed Water Extraction Location
- Access Road (New)
- Access Road (Upgrade)
- Overhead/Underground Collector Line
- Access Road Corridor
- Collector Line Corridor
- Turbine Sweep Area
- Turbine Laydown Area
- Construction Compound
- Construction Compound & Welfare Building
- Construction Compound & Transformer Station/Operations & Maintenance Building

### Existing Features

- Expressway / Highway
- Road
- Elevation Contour
- Existing Transmission Line
- Watercourse
- Waterbody
- Patent Land

### Fish Habitat

- Directly Contributes to Fish Habitat



## Notes

- Coordinate System: NAD 1983 UTM Zone 16N
- Base features produced under license with the Ontario Ministry of Natural Resources © Queen's Printer for Ontario, 2013.
- Orthographic imagery provided by © USGS, 2013. Imagery taken in 2008.



**Stantec**

January 2013  
160960771

Client/Project

Bow Lake Wind Farm  
Nodin Kitagan Limited Partnership and Nodin Kitagan 2  
Limited Partnership, through their General Partners  
Shongwish Nodin Kitagan GP Corp. and Shongwish  
Nodin Kitagan 2 GP Corp.

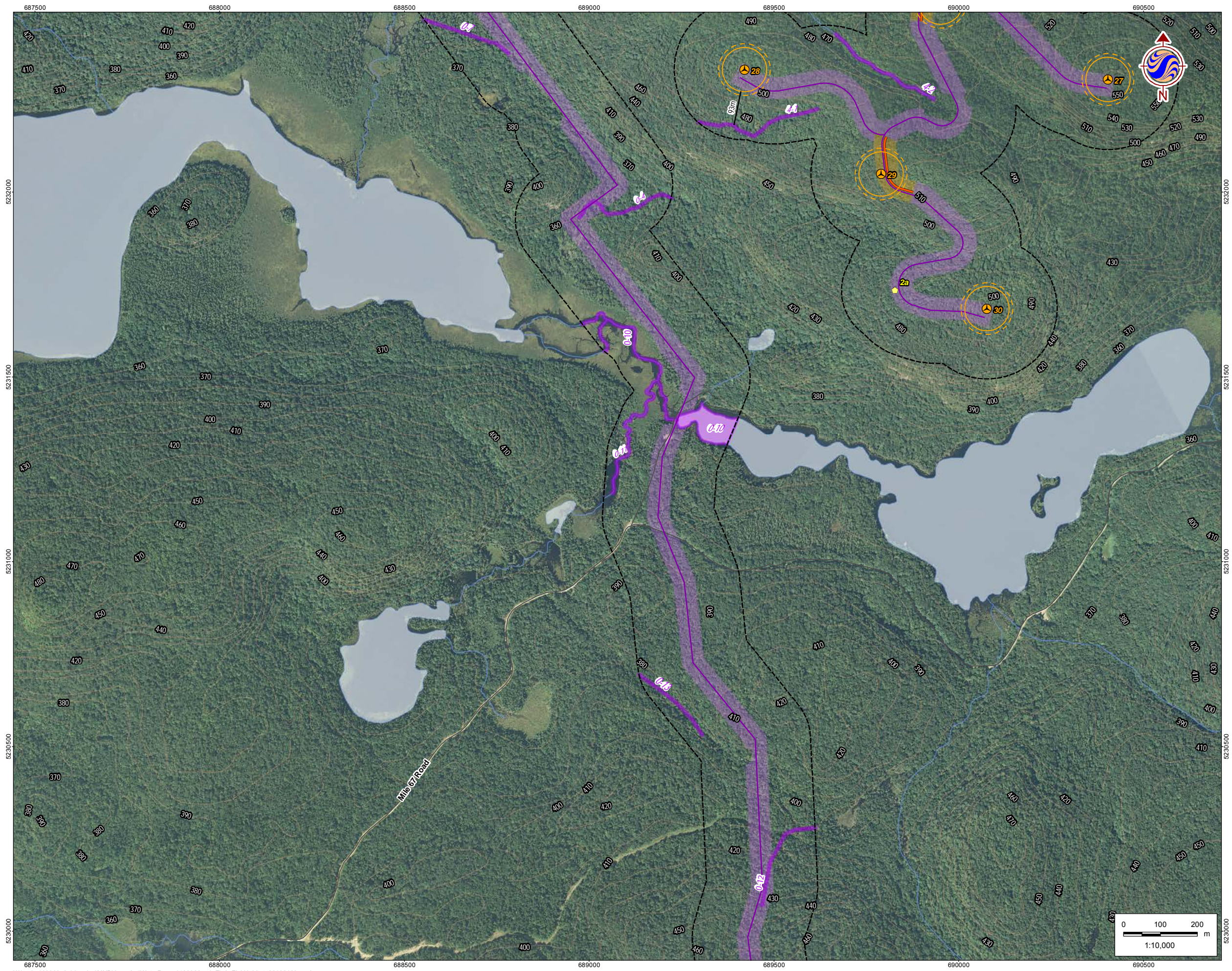
Figure No.

**3.6**

Title

**Fish Habitat**





### Legend

120m Zone of Investigation

Turbine Location

Gate Location

Meteorological Tower

Proposed Water Extraction Location

Access Road (New)

Access Road (Upgrade)

Overhead/Underground Collector Line

Access Road Corridor

Collector Line Corridor

Turbine Sweep Area

Turbine Laydown Area

Construction Compound

Construction Compound & Welfare Building

Construction Compound & Transformer Station/Operations & Maintenance Building

Expressway / Highway

Road

Elevation Contour

Existing Transmission Line

Watercourse

Waterbody

Patent Land

**Fish Habitat**

Directly Contributes to Fish Habitat

### Notes

1. Coordinate System: NAD 1983 UTM Zone 16N

2. Base features produced under license with the Ontario Ministry of Natural Resources © Queen's Printer for Ontario, 2013.

3. Orthographic imagery provided by © USGS, 2013. Imagery taken in 2008.

January 2013  
160960771

Client/Project

Bow Lake Wind Farm  
Nodin Kitagan Limited Partnership and Nodin Kitagan 2  
Limited Partnership, through their General Partners  
Shongwish Nodin Kitagan GP Corp. and Shongwish  
Nodin Kitagan 2 GP Corp.

Figure No.

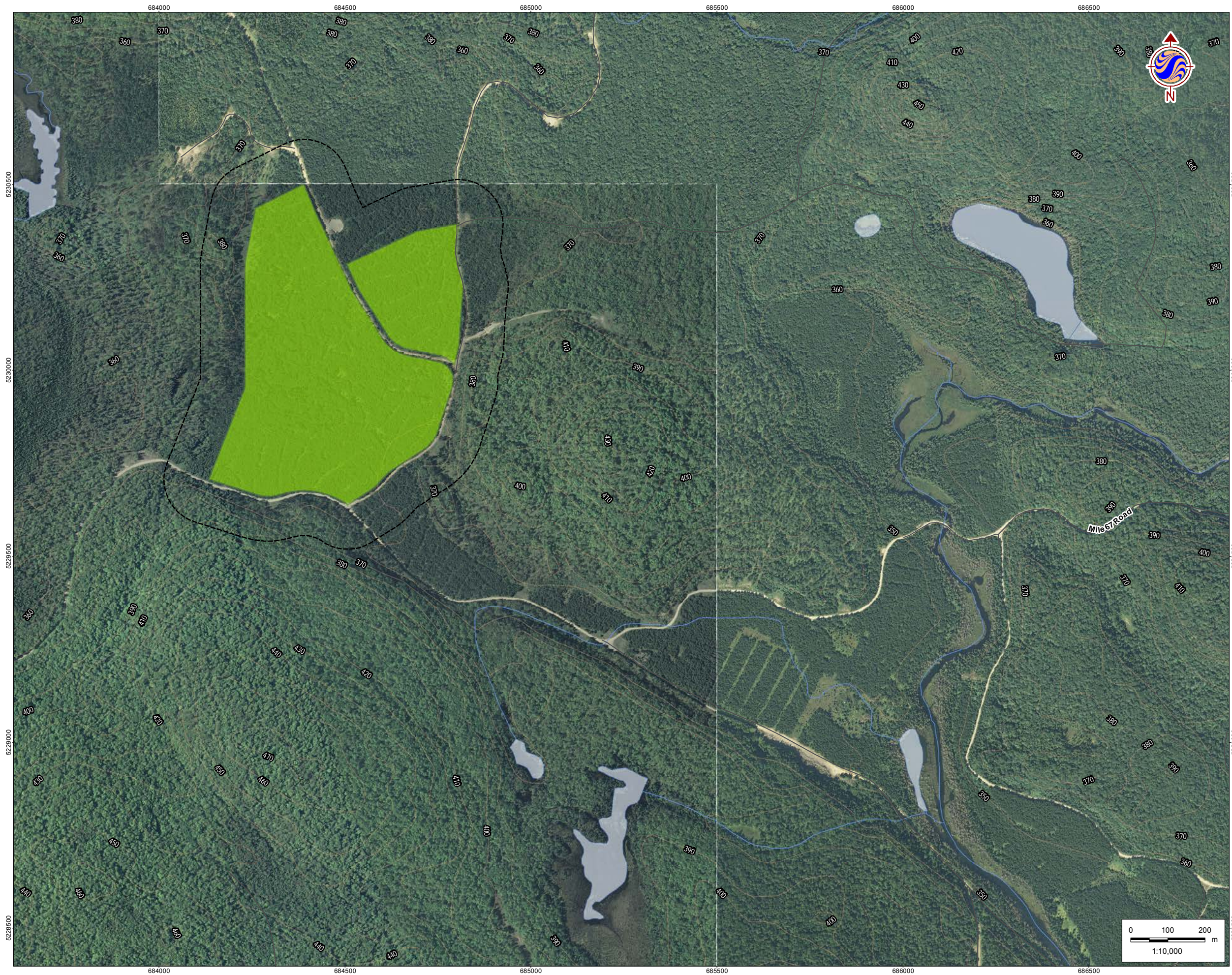
3.7

Title

**Fish Habitat**

W:\active\160960734\drawing\MXD\Aquatics\WaterReport\160960771\_Fig3\_FishHabitat\_20130123.mxd  
Revised: 2013-01-24 By: pworsell





## Legend

120m Zone of Investigation

### Project Components

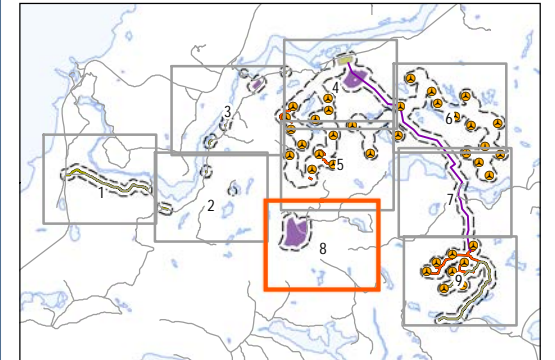
- Turbine Location
- Gate Location
- Meteorological Tower
- Proposed Water Extraction Location
- Access Road (New)
- Access Road (Upgrade)
- Overhead/Underground Collector Line
- Access Road Corridor
- Collector Line Corridor
- Turbine Sweep Area
- Turbine Laydown Area
- Construction Compound
- Construction Compound & Welfare Building
- Construction Compound & Transformer Station/Operations & Maintenance Building

### Existing Features

- Expressway / Highway
- Road
- Elevation Contour
- Existing Transmission Line
- Watercourse
- Waterbody
- Patent Land

### Fish Habitat

- Directly Contributes to Fish Habitat



## Notes

- Coordinate System: NAD 1983 UTM Zone 16N
- Base features produced under license with the Ontario Ministry of Natural Resources © Queen's Printer for Ontario, 2013.
- Orthographic imagery provided by © USGS, 2013. Imagery taken in 2008.



**Stantec**

January 2013  
160960771

Client/Project

Bow Lake Wind Farm  
Nodin Kitagan Limited Partnership and Nodin Kitagan 2  
Limited Partnership, through their General Partners  
Shongwish Nodin Kitagan GP Corp. and Shongwish  
Nodin Kitagan 2 GP Corp.

Figure No.

**3.8**

Title

**Fish Habitat**





**Legend**

120m Zone of Investigation

**Project Components**

Turbine Location

Gate Location

Meteorological Tower

Proposed Water Extraction Location

Access Road (New)

Access Road (Upgrade)

Overhead/Underground Collector Line

Access Road Corridor

Collector Line Corridor

Turbine Sweep Area

Turbine Laydown Area

Construction Compound

Construction Compound & Welfare Building

Construction Compound & Transformer Station/Operations & Maintenance Building

**Existing Features**

Expressway / Highway

Road

Elevation Contour

Existing Transmission Line

Watercourse

Waterbody

Patent Land

**Fish Habitat**

Directly Contributes to Fish Habitat

**Notes**

1.

Coordinate System: NAD 1983 UTM Zone 16N

2.

Base features produced under license with the Ontario Ministry of Natural Resources © Queen's Printer for Ontario, 2013.

3.

Orthographic imagery provided by © USGS, 2013. Imagery taken in 2008.

Client/Project

Bow Lake Wind Farm  
Nodin Kitagan Limited Partnership and Nodin Kitagan 2  
Limited Partnership, through their General Partners  
Shongwish Nodin Kitagan GP Corp. and Shongwish  
Nodin Kitagan 2 GP Corp.

Figure No.

3.9

Title

Fish Habitat

W:\active\160960734\drawing\MXD\Aquatics\WaterReport\160960771\_Fig3\_FishHabitat\_20130123.mxd  
Revised: 2013-01-24 By: pworsell