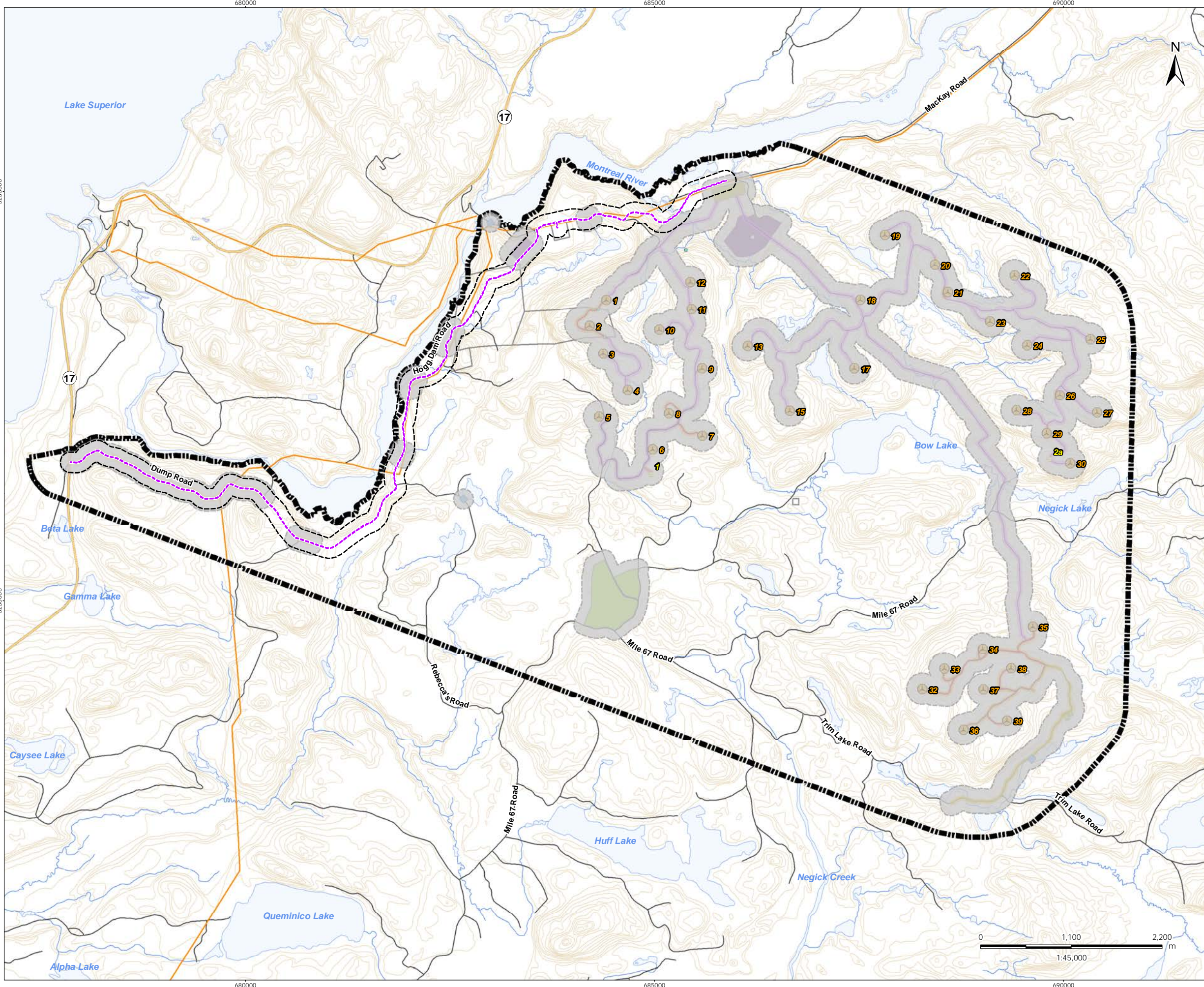


Appendix A: Figures



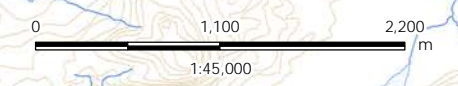
- Legend**
- Study Area
 - Fibre Optic Cable 120m Zone of Investigation
 - Previously Assessed 120m Zone of Investigation
 - Fibre Optic Line/ Project Location
- Previously Assessed Project Components**
- Turbine Location
 - Gate Location
 - Meteorological Tower
 - Proposed Water Extraction Location
 - Access Road (New)
 - Access Road (Upgrade)
 - Overhead/Underground Collector Line
 - Access Road Corridor
 - Collector Line Corridor
 - Construction Compound
 - Construction Compound & Welfare Building
 - Construction Compound & Transformer Station/Operations & Maintenance Building
- Existing Features**
- Expressway / Highway
 - Road
 - Elevation Contour
 - Existing Transmission Line
 - Watercourse
 - Waterbody
 - Patent Land

- Notes**
1. Coordinate System: NAD 1983 UTM Zone 16N
 2. Base features produced under license with the Ontario Ministry of Natural Resources © Queen's Printer for Ontario, 2013.

Client/Project
 Bow Lake Wind Farm
 Nodin Kitagan Limited Partnership and Nodin Kitagan 2 Limited Partnership, through their General Partners Shongwish Nodin Kitagan GP Corp. and Shongwish Nodin Kitagan 2 GP Corp.

Figure No.
1.0

Title
Project Location & Study Area - Overview



W:\active\60960734\drawing\MXD\REA_Addendum\NHA\160960771_Fig_1_ProjectLocation_20140128.mxd
 Revised: 2014-01-28 By: awhite

680000 685000 690000

680000 685000 690000

5235000 5230000

5235000 5230000

January 2014
 160960771