

- Notes**
1. Coordinate System: NAD 1983 UTM Zone 18N
 2. Base features produced under license with the Ontario Ministry of Natural Resources © Queen's Printer for Ontario, 2013.
 3. Orthographic imagery provided by © USGS, 2013. Imagery taken in 2008.

January 2013
 160960771



Stantec

Legend

120m Zone of Investigation

Feature Avoidance Line

Project Components

- Turbine Location
- Gate Location
- Meteorological Tower
- Proposed Water Extraction Location
- Access Road (New)
- Access Road (Upgrade)
- Overhead/Underground Collector Line
- Access Road Corridor
- Collector Line Corridor
- Turbine Sweep Area
- Turbine Laydown Area

- Construction Compound
- Construction Compound & Welfare Building
- Construction Compound & Transformer Station/Operations & Maintenance Building
- Culvert Location
- Expressway / Highway
- Road
- Elevation Contour
- Existing Transmission Line
- Watercourse
- Waterbody
- Patent Land

- Wetlands (delineated by Stantec - SWET)**
- Previously Significant Wetland - PSW
 - Previously Evaluated Wetland - Non-PSW
 - Previously Unidentified Wetland
 - Recommended for Inclusion in PSW

- Significant Features**
- Boreal Bedstraw Habitat
 - Braun's Holly Fern Habitat
 - Oval-leaved Bilberry Habitat

Rare Plant Observations

- Seep
- Boreal Bedstraw
- Braun's Holly Fern
- Oval-leaved Bilberry

Client/Project

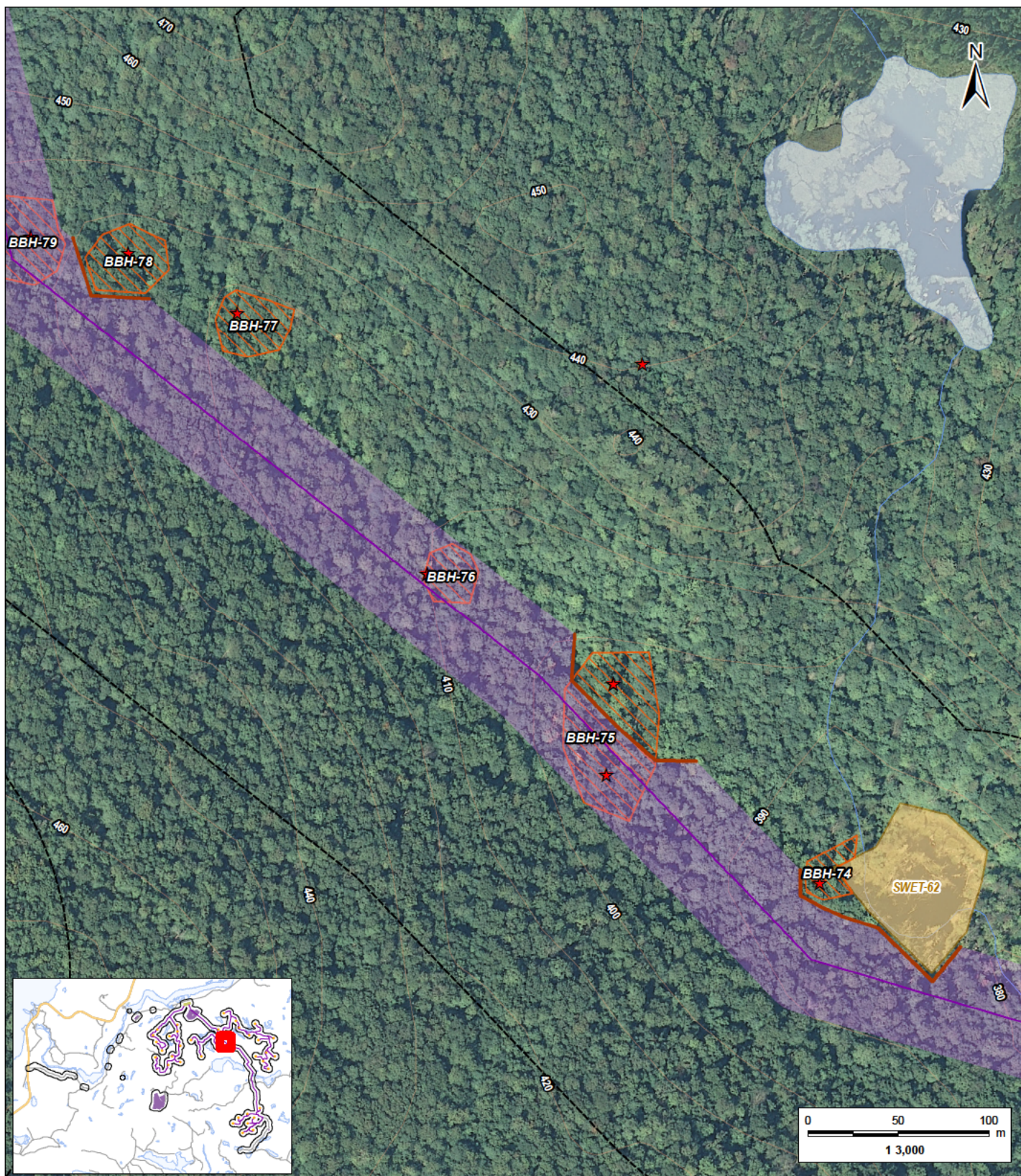
Bow Lake Wind Farm
 Nodin Kitagan Limited Partnership and Nodin Kitagan 2
 Limited Partnership, through their General Partners
 Shongwish Nodin Kitagan GP Corp. and Shongwish
 Nodin Kitagan 2 GP Corp.

Figure No.

7.18

Title

**Avoidance and Mitigation
 of Significant Wildlife
 Habitat and Wetlands**



Notes
 1. Coordinate System: NAD 1983 UTM Zone 18N
 2. Base features produced under license with the Ontario Ministry of Natural Resources © Queen's Printer for Ontario, 2013.
 3. Orthographic imagery provided by © USGS, 2013. Imagery taken in 2008.

January 2013
 160960771



Stantec

Legend

120m Zone of Investigation

Feature Avoidance Line

Project Components

- Turbine Location
- Gate Location
- Meteorological Tower
- Proposed Water Extraction Location
- Access Road (New)
- Access Road (Upgrade)
- Overhead/Underground Collector Line
- Access Road Corridor
- Collector Line Corridor
- Turbine Sweep Area
- Turbine Laydown Area

- Construction Compound
- Construction Compound & Welfare Building
- Construction Compound & Transformer Station/Operations & Maintenance Building
- Culvert Location
- Existing Features
- Expressway / Highway
- Road
- Elevation Contour
- Existing Transmission Line
- Watercourse
- Waterbody
- Patent Land

Wetlands (delineated by Stantec - SWET)

- Previously Significant Wetland - PSW
- Previously Evaluated Wetland - Non-PSW
- Previously Unidentified Wetland
- Previously Unidentified Wetland Recommended for Inclusion in PSW

Significant Features

- Boreal Bedstraw Habitat
- Braun's Holly Fern Habitat
- Oval-leaved Bilberry Habitat
- Seep

Rare Plant Observations

- Boreal Bedstraw
- Braun's Holly Fern
- Oval-leaved Bilberry

Client/Project

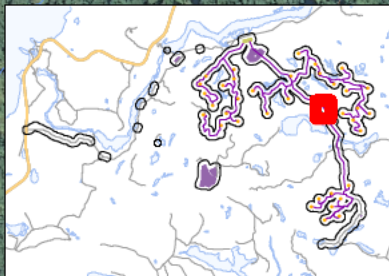
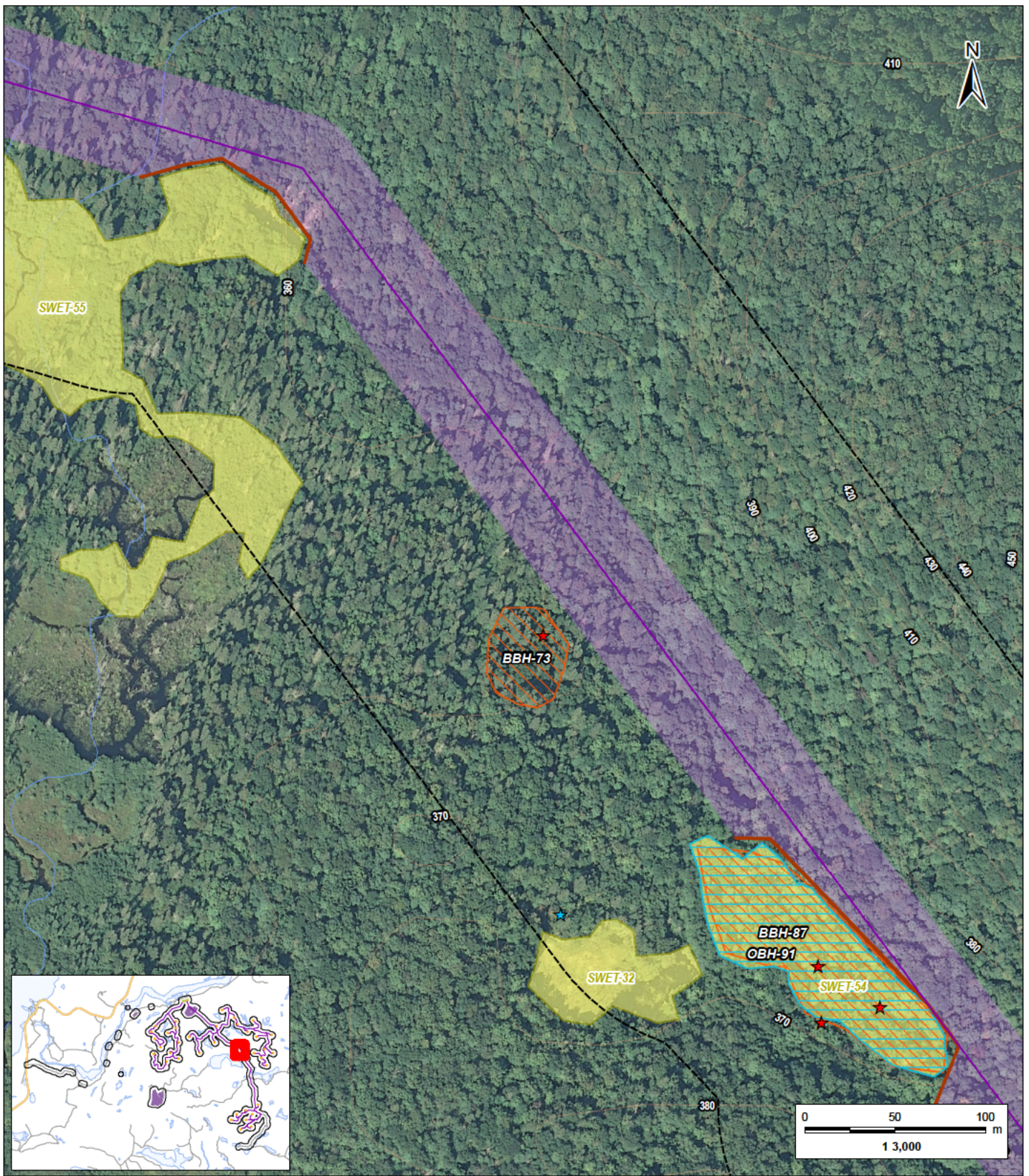
Bow Lake Wind Farm
 Nodin Kitagan Limited Partnership and Nodin Kitagan 2 Limited Partnership, through their General Partners Shongwish Nodin Kitagan GP Corp. and Shongwish Nodin Kitagan 2 GP Corp.

Figure No.

7.19

Title

Avoidance and Mitigation of Significant Wildlife Habitat and Wetlands



- Notes**
1. Coordinate System: NAD 1983 UTM Zone 18N
 2. Base features produced under license with the Ontario Ministry of Natural Resources © Queen's Printer for Ontario, 2013.
 3. Orthographic imagery provided by © USGS, 2013. Imagery taken in 2008.

January 2013
 160960771



Stantec

Legend

120m Zone of Investigation

Feature Avoidance Line

Project Components

- Turbine Location
- Gate Location
- Meteorological Tower
- Proposed Water Extraction Location
- Access Road (New)
- Access Road (Upgrade)
- Overhead/Underground Collector Line
- Access Road Corridor
- Collector Line Corridor
- Turbine Sweep Area
- Turbine Laydown Area

- Construction Compound
- Construction Compound & Welfare Building
- Construction Compound & Transformer Station/Operations & Maintenance Building
- Culvert Location

Existing Features

- Expressway / Highway
- Road
- Elevation Contour
- Existing Transmission Line
- Watercourse
- Waterbody
- Patent Land

Wetlands (delineated by Stantec - SWET)

- Previously Significant Wetland - PSW
- Previously Evaluated Wetland - Non-PSW
- Previously Unidentified Wetland
- Previously Unidentified Wetland Recommended for Inclusion in PSW

Significant Features

- Boreal Bedstraw Habitat
- Braun's Holly Fern Habitat
- Oval-leaved Bilberry Habitat

Rare Plant Observations

- Boreal Bedstraw
- Braun's Holly Fern
- Oval-leaved Bilberry

Client/Project

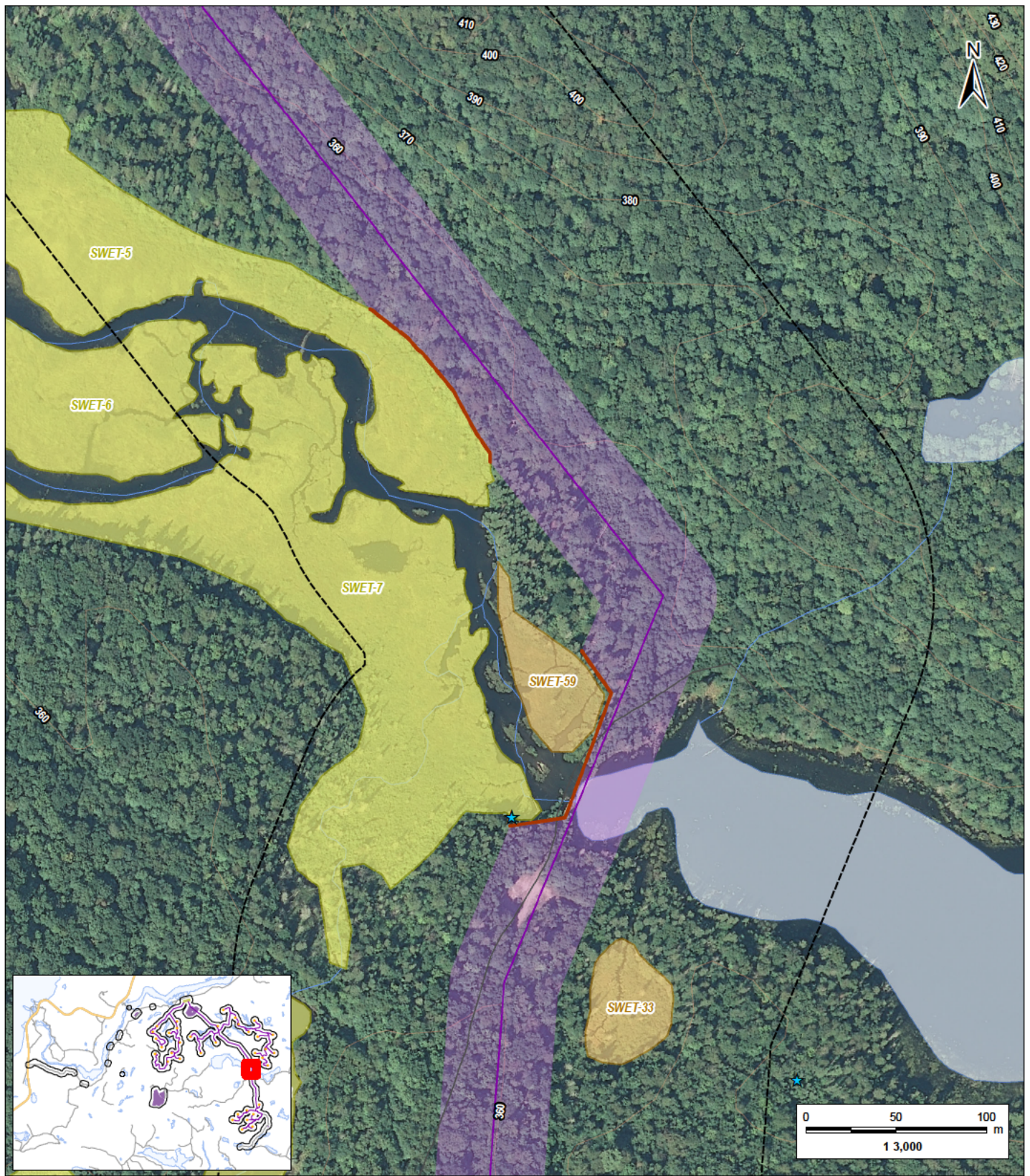
Bow Lake Wind Farm
 Nodin Kitagan Limited Partnership and Nodin Kitagan 2 Limited Partnership, through their General Partners Shongwish Nodin Kitagan GP Corp. and Shongwish Nodin Kitagan 2 GP Corp.

Figure No.

7.20

Title

Avoidance and Mitigation of Significant Wildlife Habitat and Wetlands



Notes
 1. Coordinate System: NAD 1983 UTM Zone 18N
 2. Base features produced under license with the Ontario Ministry of Natural Resources © Queen's Printer for Ontario, 2013.
 3. Orthographic imagery provided by © USGS, 2013. Imagery taken in 2008.

January 2013
 160960771



Stantec

Legend

120m Zone of Investigation

Feature Avoidance Line

Project Components

- Turbine Location
- Gate Location
- Meteorological Tower
- Proposed Water Extraction Location
- Access Road (New)
- Access Road (Upgrade)
- Overhead/Underground Collector Line
- Access Road Corridor
- Collector Line Corridor
- Turbine Sweep Area
- Turbine Laydown Area

- Construction Compound
- Construction Compound & Welfare Building
- Construction Compound & Transformer Station/Operations & Maintenance Building
- Culvert Location

Existing Features

- Expressway / Highway
- Road
- Elevation Contour
- Existing Transmission Line
- Watercourse
- Waterbody
- Patent Land

Wetlands (delineated by Stantec - SWET)

- Previously Significant Wetland - PSW
- Previously Evaluated Wetland - Non-PSW
- Previously Unidentified Wetland
- Previously Unidentified Wetland Recommended for Inclusion in PSW

Significant Features

- Boreal Bedstraw Habitat
- Braun's Holly Fern Habitat
- Oval-leaved Bilberry Habitat
- Seep

Rare Plant Observations

- Boreal Bedstraw
- Braun's Holly Fern
- Oval-leaved Bilberry

Client/Project

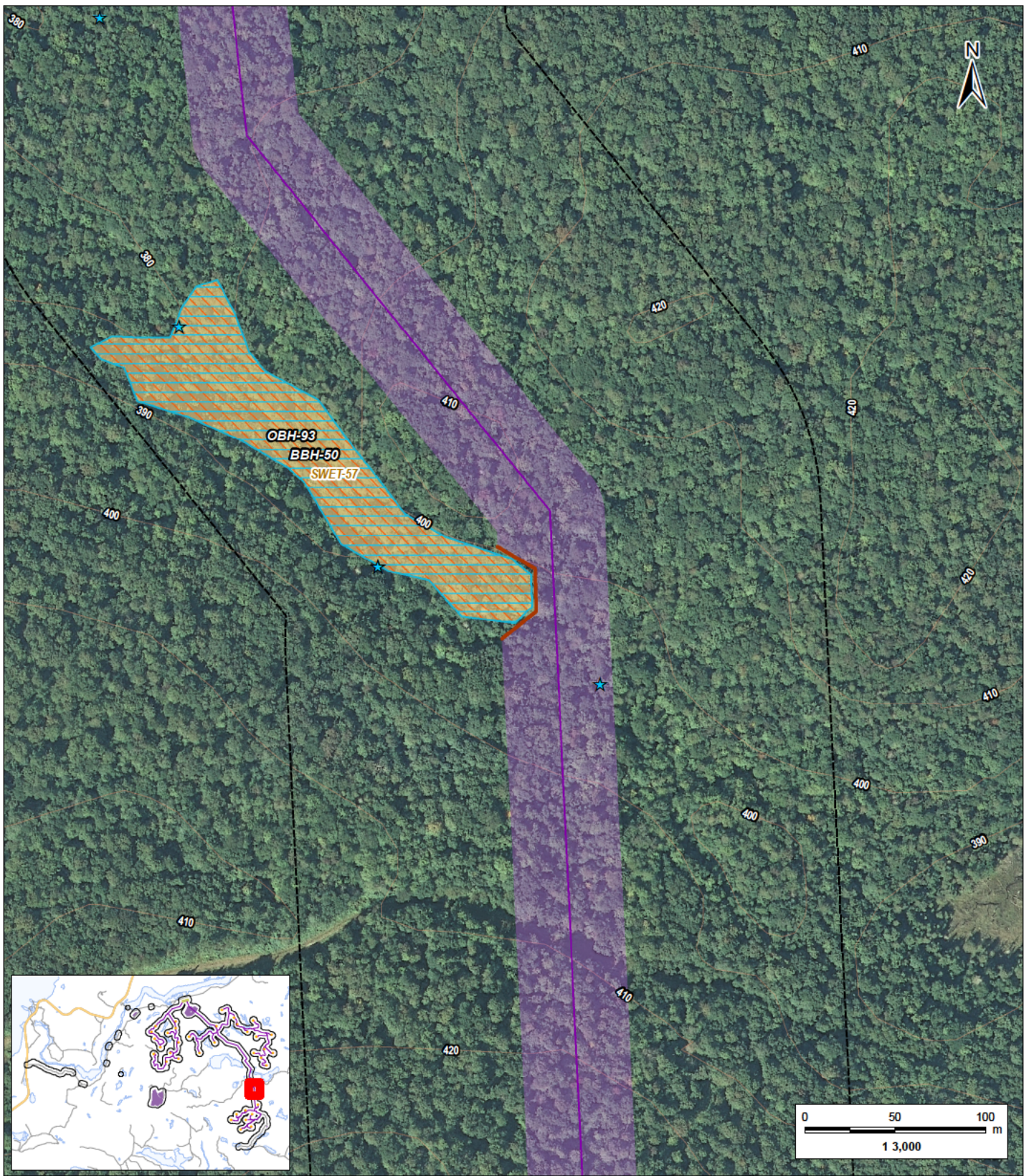
Bow Lake Wind Farm
 Nodin Kitagan Limited Partnership and Nodin Kitagan 2 Limited Partnership, through their General Partners Shongwish Nodin Kitagan GP Corp. and Shongwish Nodin Kitagan 2 GP Corp.

Figure No.

7.21

Title

Avoidance and Mitigation of Significant Wildlife Habitat and Wetlands



Notes
 1. Coordinate System: NAD 1983 UTM Zone 18N
 2. Base features produced under license with the Ontario Ministry of Natural Resources © Queen's Printer for Ontario, 2013.
 3. Orthographic imagery provided by © USGS, 2013. Imagery taken in 2008.

January 2013
 160960771



Stantec

Legend

120m Zone of Investigation

Feature Avoidance Line

Project Components

- Turbine Location
- Gate Location
- Meteorological Tower
- Proposed Water Extraction Location
- Access Road (New)
- Access Road (Upgrade)
- Overhead/Underground Collector Line
- Access Road Corridor
- Collector Line Corridor
- Turbine Sweep Area
- Turbine Laydown Area

Construction Compound
 Construction Compound & Welfare Building
 Construction Compound & Transformer Station/Operations & Maintenance Building

Culvert Location

Existing Features

- Expressway / Highway
- Road
- Elevation Contour
- Existing Transmission Line
- Watercourse
- Waterbody
- Patent Land

Wetlands (delineated by Stantec - SWET)

- Previously Significant Wetland - PSW
- Previously Evaluated Wetland - Non-PSW
- Previously Unidentified Wetland
- Previously Unidentified Wetland Recommended for Inclusion in PSW

Significant Features

- Boreal Bedstraw Habitat
- Braun's Holly Fern Habitat
- Oval-leaved Bilberry Habitat

Rare Plant Observations

- Boreal Bedstraw
- Braun's Holly Fern
- Oval-leaved Bilberry

Client/Project

Bow Lake Wind Farm
 Nodin Kitagan Limited Partnership and Nodin Kitagan 2 Limited Partnership, through their General Partners Shongwish Nodin Kitagan GP Corp. and Shongwish Nodin Kitagan 2 GP Corp.

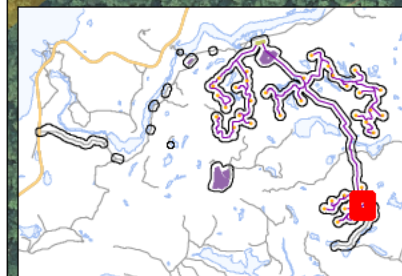
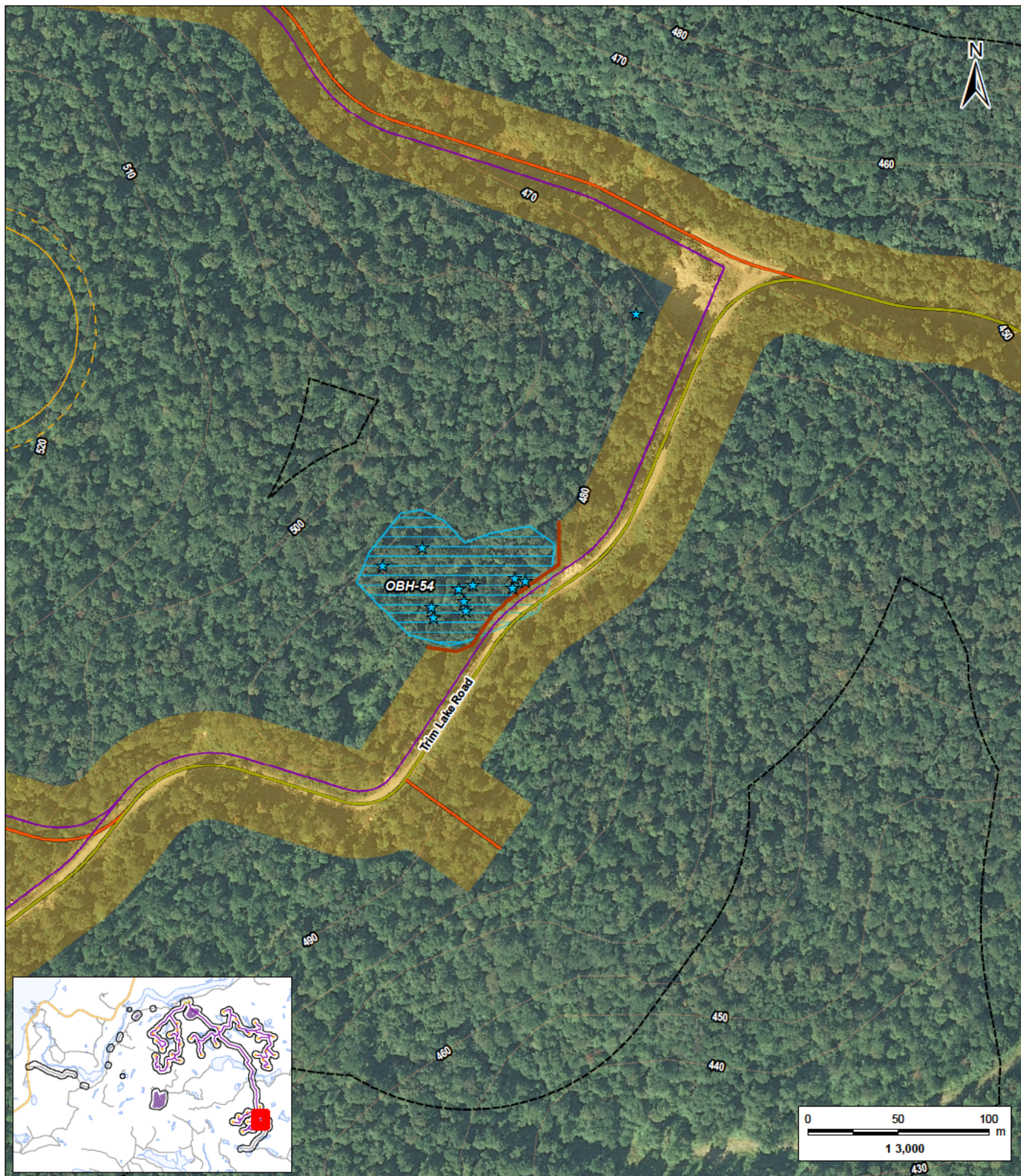
Figure No.

7.22

Title

Avoidance and Mitigation of Significant Wildlife Habitat and Wetlands

W:\active\60960734\Drawing\MXD\Terrestrial\NHA\160960771_Fig7_AvoidanceMitigation\SWH_20130123.mxd
 Revised: 2013-01-23 By: jworseil



- Notes**
1. Coordinate System: NAD 1983 UTM Zone 18N
 2. Base features produced under license with the Ontario Ministry of Natural Resources © Queen's Printer for Ontario, 2013.
 3. Orthographic imagery provided by © USGS, 2013. Imagery taken in 2008.

January 2013
 160960771



Stantec

Legend

120m Zone of Investigation

Feature Avoidance Line

Project Components

- Turbine Location
- Gate Location
- Meteorological Tower
- Proposed Water Extraction Location
- Access Road (New)
- Access Road (Upgrade)
- Overhead/Underground Collector Line
- Access Road Corridor
- Collector Line Corridor
- Turbine Sweep Area
- Turbine Laydown Area

- Construction Compound
- Construction Compound & Welfare Building
- Construction Compound & Transformer Station/Operations & Maintenance Building
- Culvert Location

Existing Features

- Expressway / Highway
- Road
- Elevation Contour
- Existing Transmission Line
- Watercourse
- Waterbody
- Patent Land

Wetlands (delineated by Stantec - SWET)

- Previously Significant Wetland - PSW
- Previously Evaluated Wetland - Non-PSW
- Previously Unidentified Wetland
- Previously Unidentified Wetland Recommended for Inclusion in PSW

Significant Features

- Boreal Bedstraw Habitat
- Braun's Holly Fern Habitat
- Oval-leaved Bilberry Habitat

Rare Plant Observations

- Boreal Bedstraw
- Braun's Holly Fern
- Oval-leaved Bilberry

Client/Project

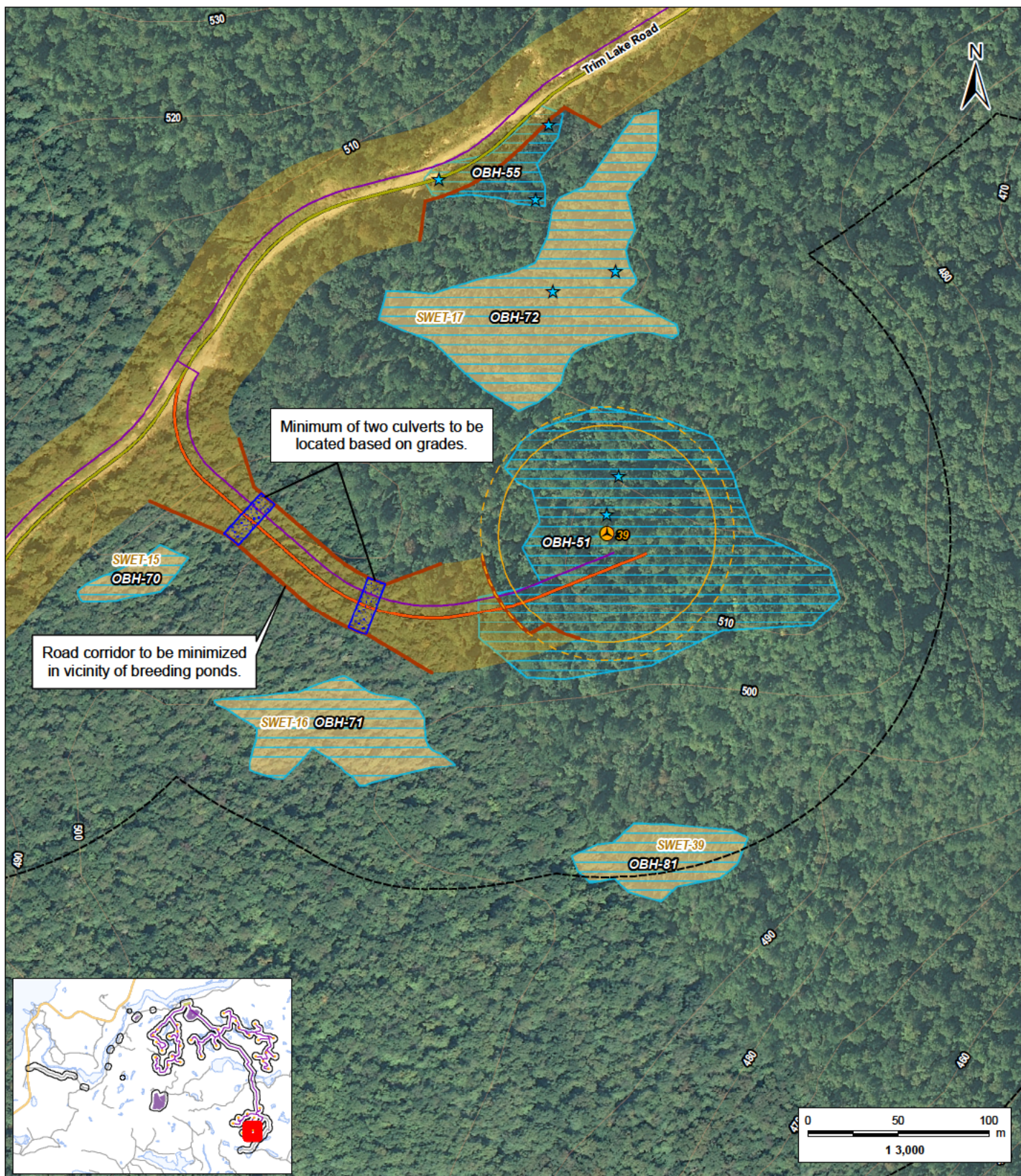
Bow Lake Wind Farm
 Nodin Kitagan Limited Partnership and Nodin Kitagan 2 Limited Partnership, through their General Partners Shongwish Nodin Kitagan GP Corp. and Shongwish Nodin Kitagan 2 GP Corp.

Figure No.

7.23

Title

Avoidance and Mitigation of Significant Wildlife Habitat and Wetlands



Notes
 1. Coordinate System: NAD 1983 UTM Zone 18N
 2. Base features produced under license with the Ontario Ministry of Natural Resources © Queen's Printer for Ontario, 2013.
 3. Orthographic imagery provided by © USGS, 2013. Imagery taken in 2008.

January 2013
 160960771



Stantec

Legend

120m Zone of Investigation

Feature Avoidance Line

Project Components

- Turbine Location
- Gate Location
- Meteorological Tower
- Proposed Water Extraction Location
- Access Road (New)
- Access Road (Upgrade)
- Overhead/Underground Collector Line
- Access Road Corridor
- Collector Line Corridor
- Turbine Sweep Area
- Turbine Laydown Area

- Construction Compound
- Construction Compound & Welfare Building
- Construction Compound & Transformer Station/Operations & Maintenance Building
- Culvert Location

Existing Features

- Expressway / Highway
- Road
- Elevation Contour
- Existing Transmission Line
- Watercourse
- Waterbody
- Patent Land

Wetlands (delineated by Stantec - SWET)

- Previously Significant Wetland - PSW
- Previously Evaluated Wetland - Non-PSW
- Previously Unidentified Wetland
- Previously Unidentified Wetland Recommended for Inclusion in PSW

Significant Features

- Boreal Bedstraw Habitat
- Braun's Holly Fern Habitat
- Oval-leaved Bilberry Habitat

Rare Plant Observations

- Boreal Bedstraw
- Braun's Holly Fern
- Oval-leaved Bilberry

Client/Project

Bow Lake Wind Farm
 Nodin Kitagan Limited Partnership and Nodin Kitagan 2 Limited Partnership, through their General Partners Shongwish Nodin Kitagan GP Corp. and Shongwish Nodin Kitagan 2 GP Corp.

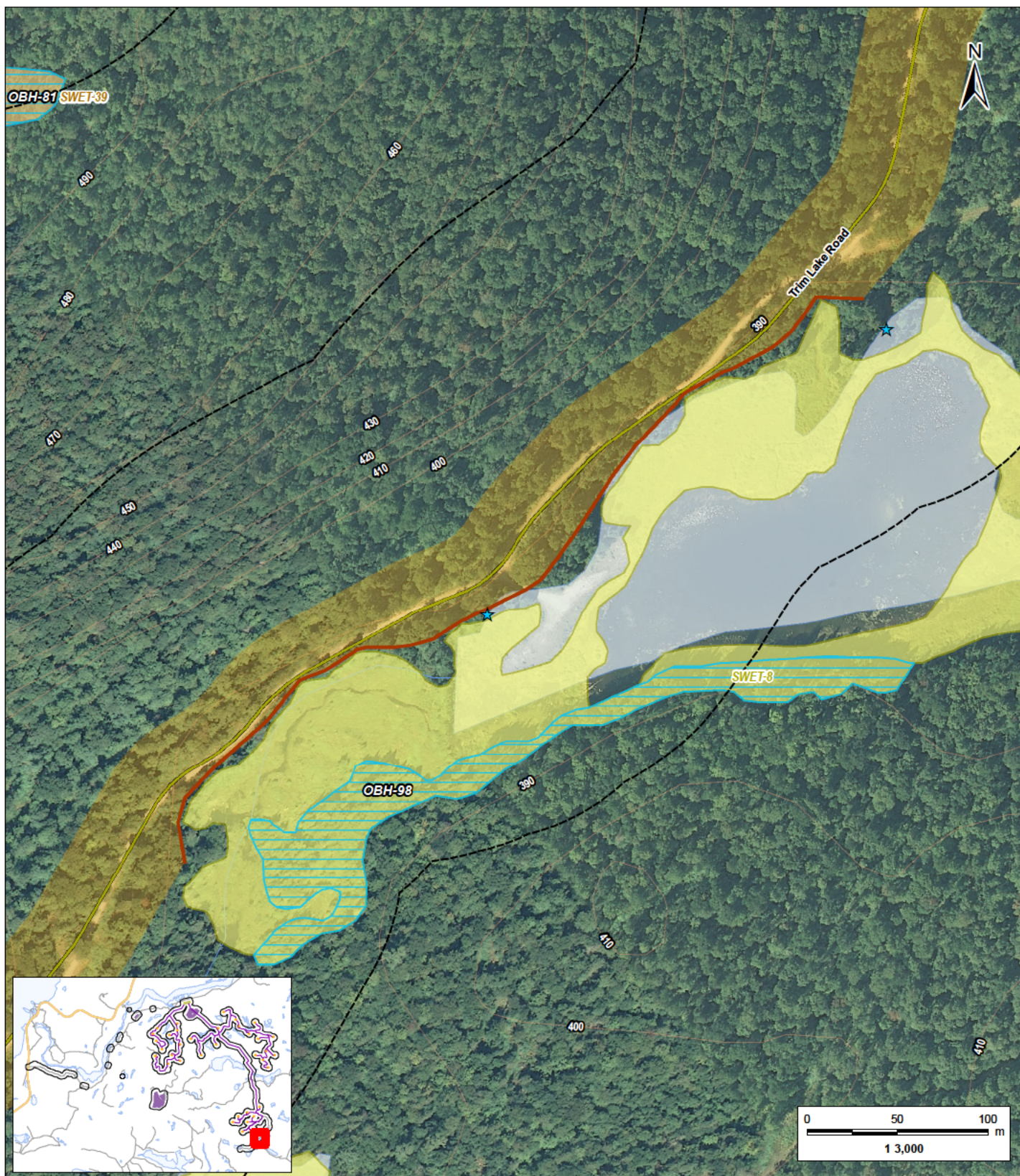
Figure No.

7.24

Title

Avoidance and Mitigation of Significant Wildlife Habitat and Wetlands

W:\active\60960734\Drawing\MXD\Terrestrial\NHA\160960771_Fig7_AvoidanceMitigationSWH_20130123.mxd
 Revised: 2013-01-23 By: jworse



Notes
 1. Coordinate System: NAD 1983 UTM Zone 18N
 2. Base features produced under license with the Ontario Ministry of Natural Resources © Queen's Printer for Ontario, 2013.
 3. Orthographic imagery provided by © USGS, 2013. Imagery taken in 2008.

January 2013
 160960771



Stantec

Legend

120m Zone of Investigation

Feature Avoidance Line

Project Components

- Turbine Location
- Gate Location
- Meteorological Tower
- Proposed Water Extraction Location
- Access Road (New)
- Access Road (Upgrade)
- Overhead/Underground Collector Line
- Access Road Corridor
- Collector Line Corridor
- Turbine Sweep Area
- Turbine Laydown Area

- Construction Compound
- Construction Compound & Welfare Building
- Construction Compound & Transformer Station/Operations & Maintenance Building
- Culvert Location
- Existing Features
- Expressway / Highway
- Road
- Elevation Contour
- Existing Transmission Line
- Watercourse
- Waterbody
- Patent Land

Wetlands (delineated by Stantec - SWET)

- Previously Significant Wetland - PSW
- Previously Evaluated Wetland - Non-PSW
- Previously Unidentified Wetland
- Previously Unidentified Wetland Recommended for Inclusion in PSW

Significant Features

- Boreal Bedstraw Habitat
- Braun's Holly Fern Habitat
- Oval-leaved Bilberry Habitat
- Seep

Rare Plant Observations

- Boreal Bedstraw
- Braun's Holly Fern
- Oval-leaved Bilberry

Client/Project

Bow Lake Wind Farm
 Nodin Kitagan Limited Partnership and Nodin Kitagan 2 Limited Partnership, through their General Partners Shongwish Nodin Kitagan GP Corp. and Shongwish Nodin Kitagan 2 GP Corp.

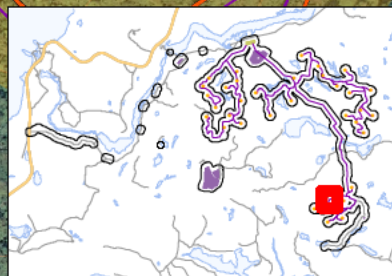
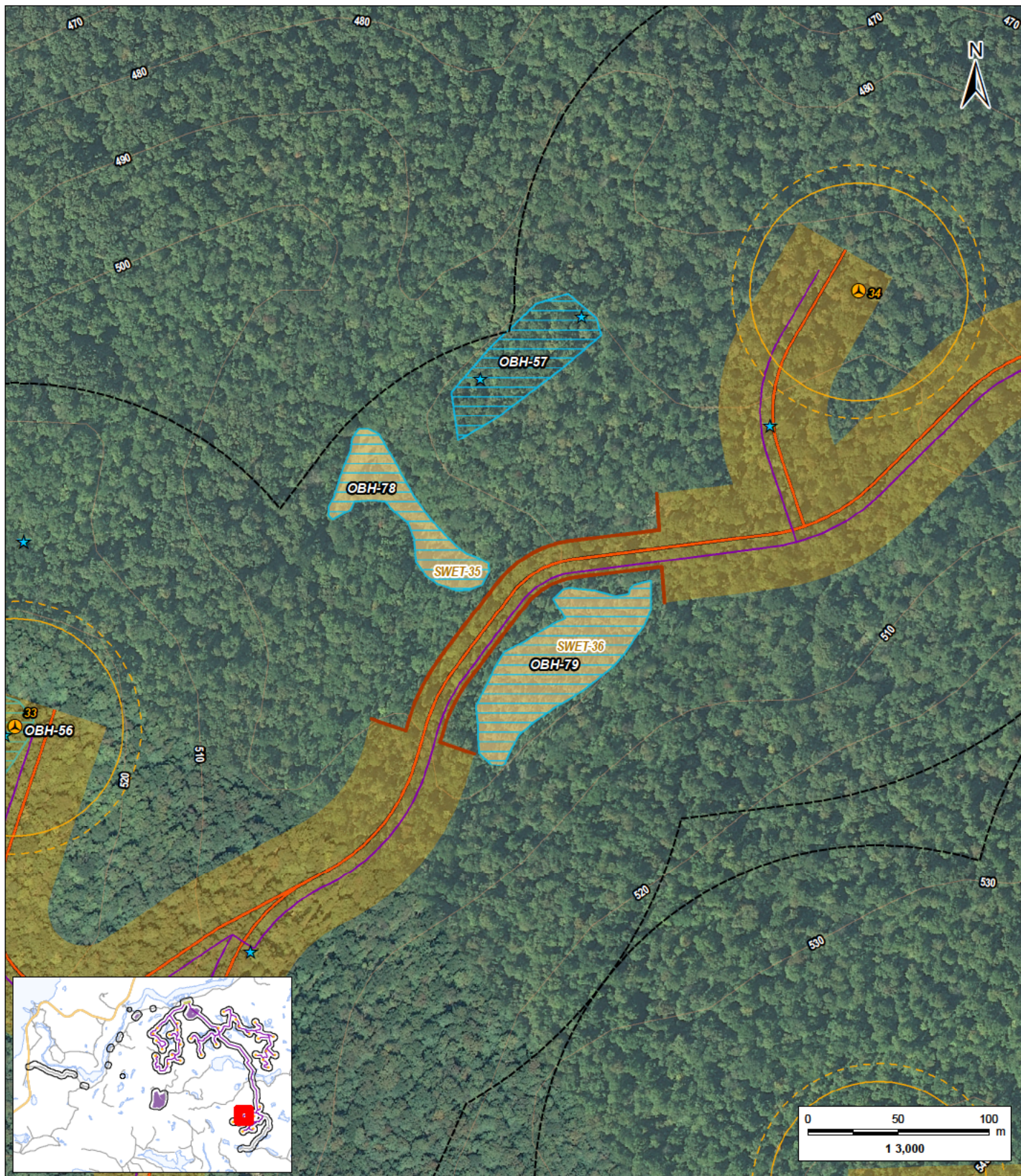
Figure No.

7.25

Title

Avoidance and Mitigation of Significant Wildlife Habitat and Wetlands

W:\active\60960734\Drawing\MXD\Terrestrial\NHA\160960771_Fig7_AvoidanceMitigation\SWH_20130123.mxd
 Revised: 2013-01-23 By: pwiseall



- Notes**
1. Coordinate System: NAD 1983 UTM Zone 18N
 2. Base features produced under license with the Ontario Ministry of Natural Resources © Queen's Printer for Ontario, 2013.
 3. Orthographic imagery provided by © USGS, 2013. Imagery taken in 2008.

January 2013
 160960771



Stantec

Legend

120m Zone of Investigation

Feature Avoidance Line

Project Components

- Turbine Location
- Gate Location
- Meteorological Tower
- Proposed Water Extraction Location
- Access Road (New)
- Access Road (Upgrade)
- Overhead/Underground Collector Line
- Access Road Corridor
- Collector Line Corridor
- Turbine Sweep Area
- Turbine Laydown Area

- Construction Compound
- Construction Compound & Welfare Building
- Construction Compound & Transformer Station/Operations & Maintenance Building
- Culvert Location

Existing Features

- Expressway / Highway
- Road
- Elevation Contour
- Existing Transmission Line
- Watercourse
- Waterbody
- Patent Land

Wetlands (delineated by Stantec - SWET)

- Previously Significant Wetland - PSW
- Previously Evaluated Wetland - Non-PSW
- Previously Unidentified Wetland
- Previously Unidentified Wetland Recommended for Inclusion in PSW

Significant Features

- Boreal Bedstraw Habitat
- Braun's Holly Fern Habitat
- Oval-leaved Bilberry Habitat

Rare Plant Observations

- Boreal Bedstraw
- Braun's Holly Fern
- Oval-leaved Bilberry

Client/Project

Bow Lake Wind Farm
 Nodin Kitagan Limited Partnership and Nodin Kitagan 2
 Limited Partnership, through their General Partners
 Shongwish Nodin Kitagan GP Corp. and Shongwish
 Nodin Kitagan 2 GP Corp.

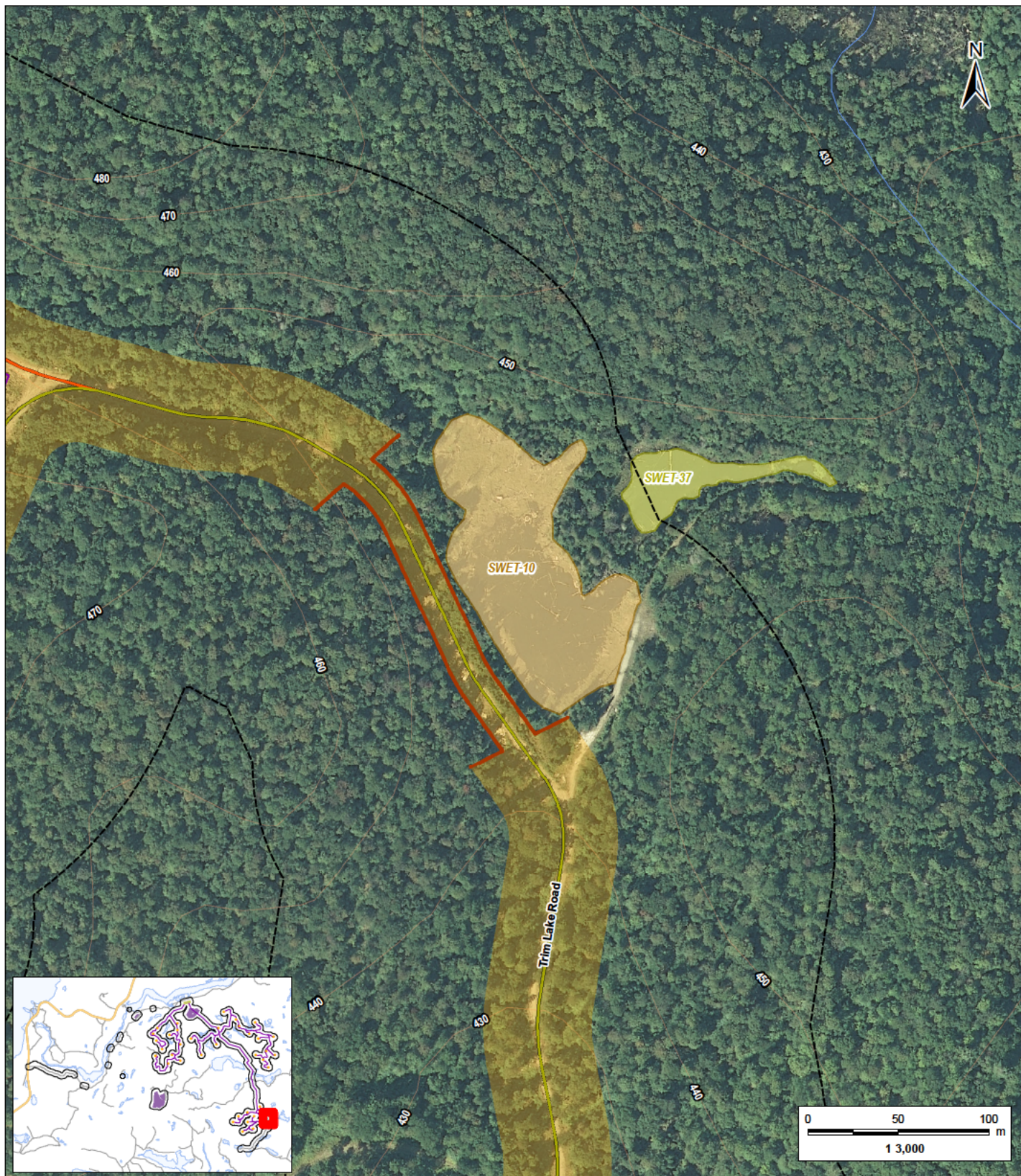
Figure No.

7.26

Title

**Avoidance and Mitigation
 of Significant Wildlife
 Habitat and Wetlands**

W:\active\60960734\Drawing\MXD\Terrestrial\NHA\160960771_Fig7_AvoidanceMitigation\SWH_20130123.mxd
 Revised: 2013-01-23 By: jworseal



Notes
 1. Coordinate System: NAD 1983 UTM Zone 18N
 2. Base features produced under license with the Ontario Ministry of Natural Resources © Queen's Printer for Ontario, 2013.
 3. Orthographic imagery provided by © USGS, 2013. Imagery taken in 2008.

January 2013
 160960771



Stantec

Legend

120m Zone of Investigation

Feature Avoidance Line

Project Components

- Turbine Location
- Gate Location
- Meteorological Tower
- Proposed Water Extraction Location
- Access Road (New)
- Access Road (Upgrade)
- Overhead/Underground Collector Line
- Access Road Corridor
- Collector Line Corridor
- Turbine Sweep Area
- Turbine Laydown Area

- Construction Compound
- Construction Compound & Welfare Building
- Construction Compound & Transformer Station/Operations & Maintenance Building
- Culvert Location

Existing Features

- Expressway / Highway
- Road
- Elevation Contour
- Existing Transmission Line
- Watercourse
- Waterbody
- Patent Land

Wetlands (delineated by Stantec - SWET)

- Previously Significant Wetland - PSW
- Previously Evaluated Wetland - Non-PSW
- Previously Unidentified Wetland
- Previously Unidentified Wetland Recommended for Inclusion in PSW

Significant Features

- Boreal Bedstraw Habitat
- Braun's Holly Fern Habitat
- Oval-leaved Bilberry Habitat
- Seep

Rare Plant Observations

- Boreal Bedstraw
- Braun's Holly Fern
- Oval-leaved Bilberry

Client/Project

Bow Lake Wind Farm
 Nodin Kitagan Limited Partnership and Nodin Kitagan 2 Limited Partnership, through their General Partners Shongwish Nodin Kitagan GP Corp. and Shongwish Nodin Kitagan 2 GP Corp.

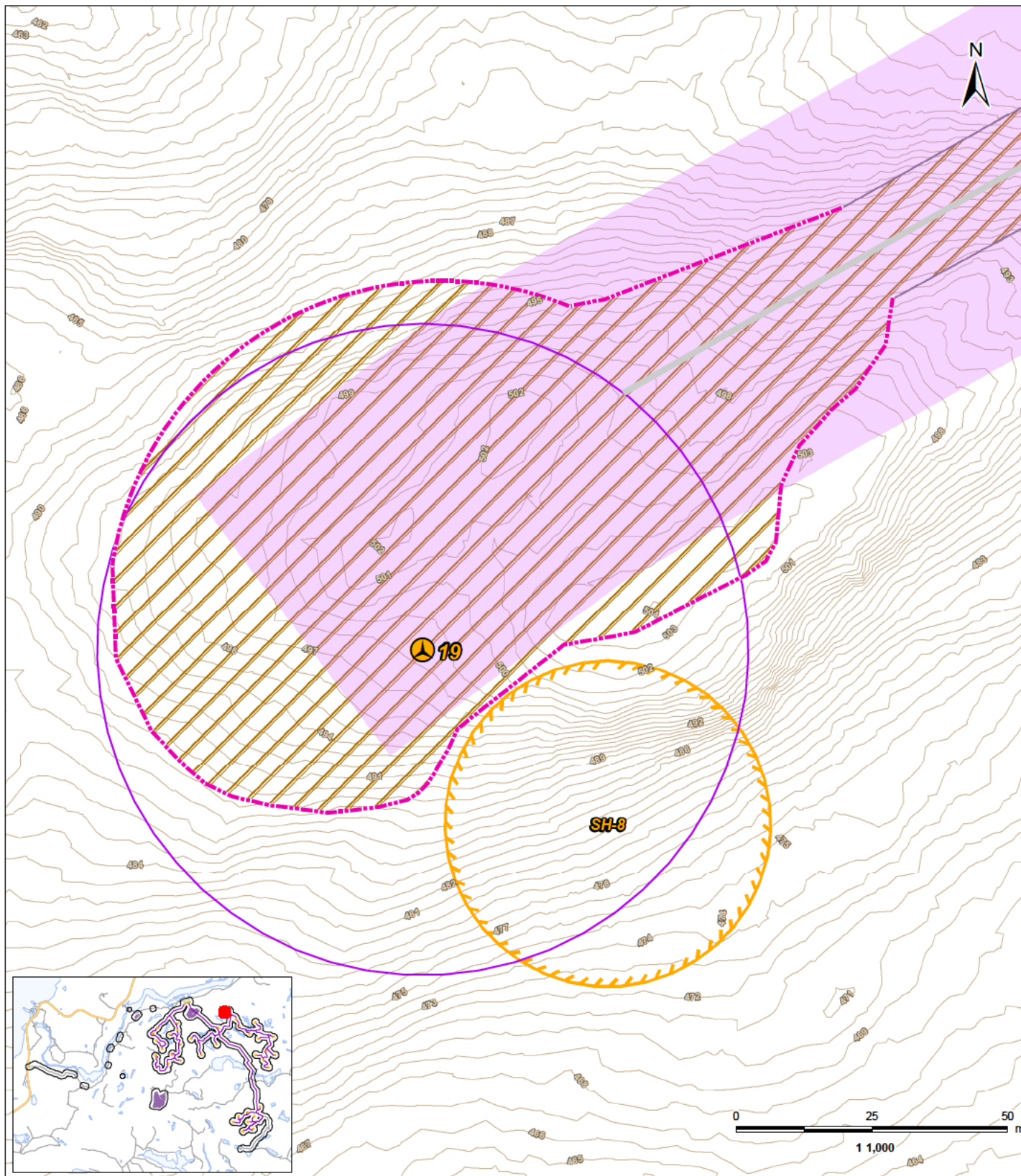
Figure No.

7.27

Title

Avoidance and Mitigation of Significant Wildlife Habitat and Wetlands

W:\active\60960734\Drawing\MXD\Terrestrial\NHA\160960771_Fig8_AvoidanceMitigationSWH_20130123.mxd
 Revised: 2013-01-23 By: pwiseall



January 2013
 160960771



Stantec

Legend

- | | | | |
|--|--------------------|--|-----------------------------------|
| | Turbine Location | | Silt Fencing |
| | Turbine Sweep Area | | Snake Hibernaculum |
| | Elevation Contour | | Approximate Limit of Cleared Area |
| | Access Road | | Collector Line Corridor |

Notes

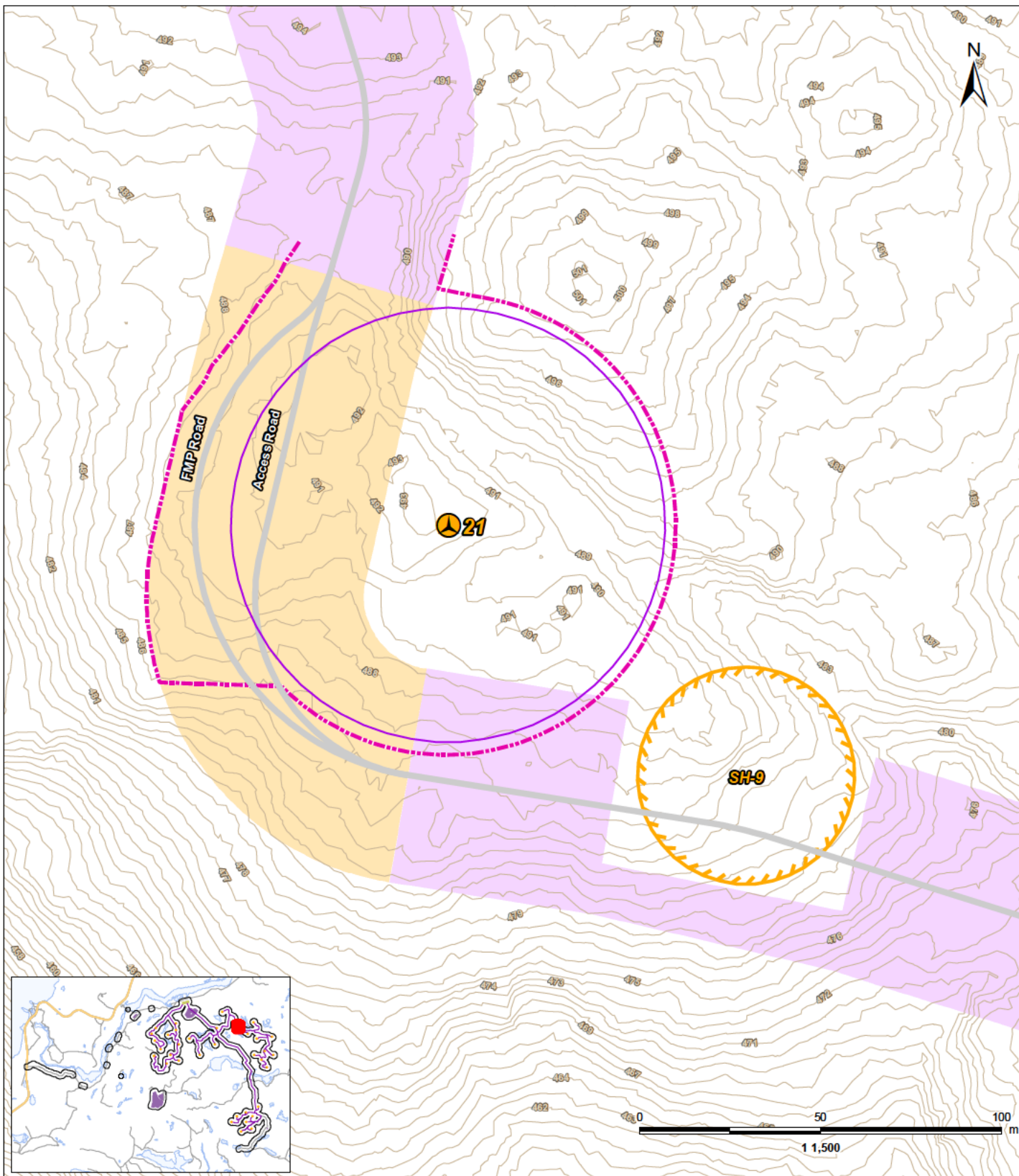
1. Coordinate System: NAD 1983 UTM Zone 16N
2. Base features produced under license with the Ontario Ministry of Natural Resources © Queen's Printer for Ontario, 2013.

Client/Project
 Bow Lake Wind Farm
 Nodin Kitagan Limited Partnership and Nodin Kitagan 2
 Limited Partnership, through their General Partners
 Shongwish Nodin Kitagan GP Corp. and Shongwish
 Nodin Kitagan 2 GP Corp.

Figure No.
 8.0

Title

**Avoidance and Mitigation
 of Significant Wildlife
 Habitat and Wetlands**


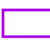







January 2013
 160960771



Stantec

Legend

-  Turbine Location
-  Turbine Sweep Area
-  Silt Fencing

-  Elevation Contour
-  Snake Hibernaculum
-  Access Road Corridor
-  Collector Line Corridor

Notes

1. Coordinate System: NAD 1983 UTM Zone 16N
2. Base features produced under license with the Ontario Ministry of Natural Resources © Queen's Printer for Ontario, 2013.

Client/Project

Bow Lake Wind Farm
 Nodin Kitagan Limited Partnership and Nodin Kitagan 2
 Limited Partnership, through their General Partners
 Shongwish Nodin Kitagan GP Corp. and Shongwish
 Nodin Kitagan 2 GP Corp.

Figure No.

9.0

Title

**Avoidance and Mitigation
 of Significant Wildlife
 Habitat and Wetlands**