

Bow Lake Wind Project



Community Liaison Committee
May 26, 2015

Project Update



- Schedule Update
- Project Location
- Project construction update
- Start of Operations for Phase 1
- Community investment

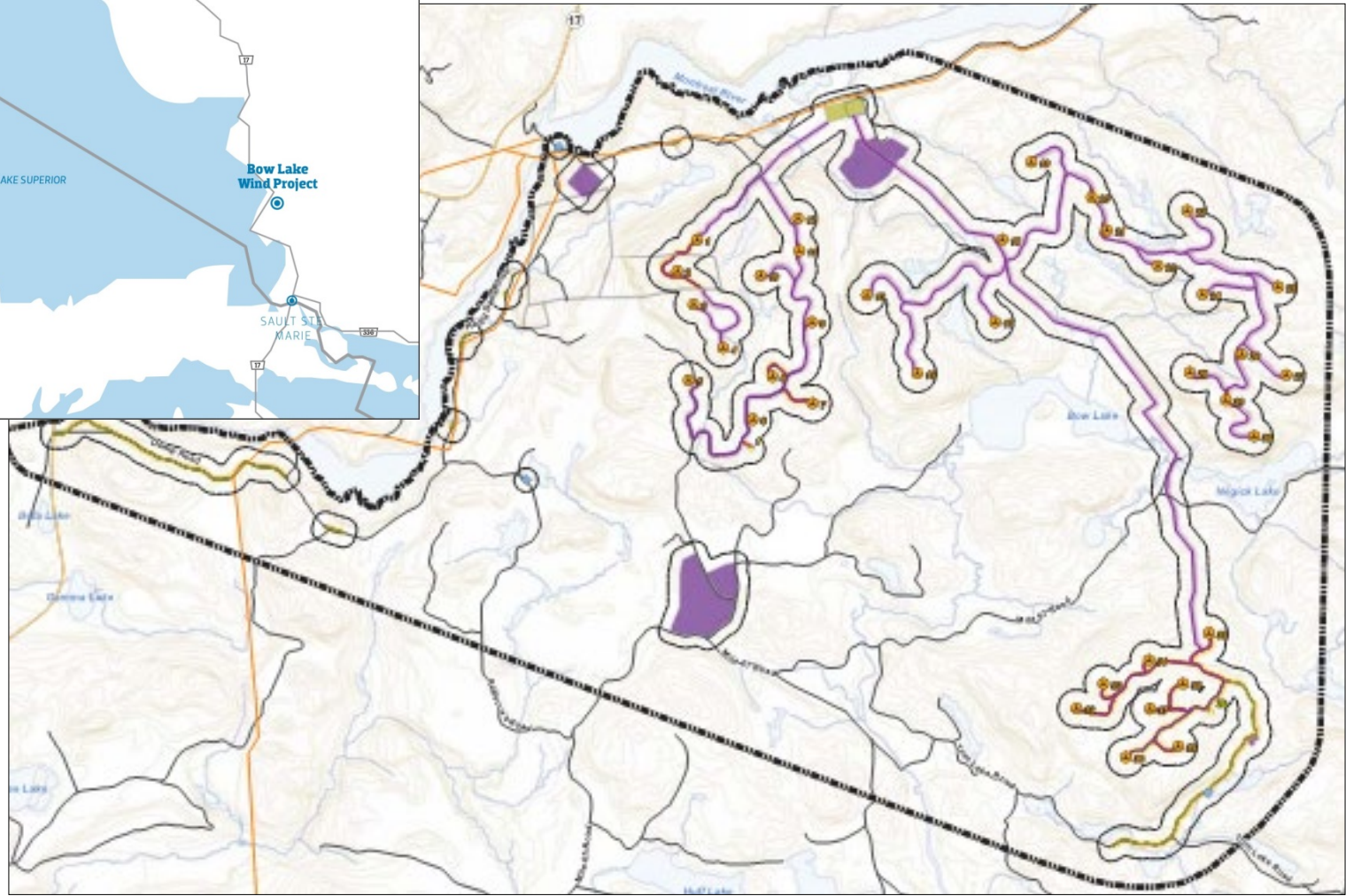
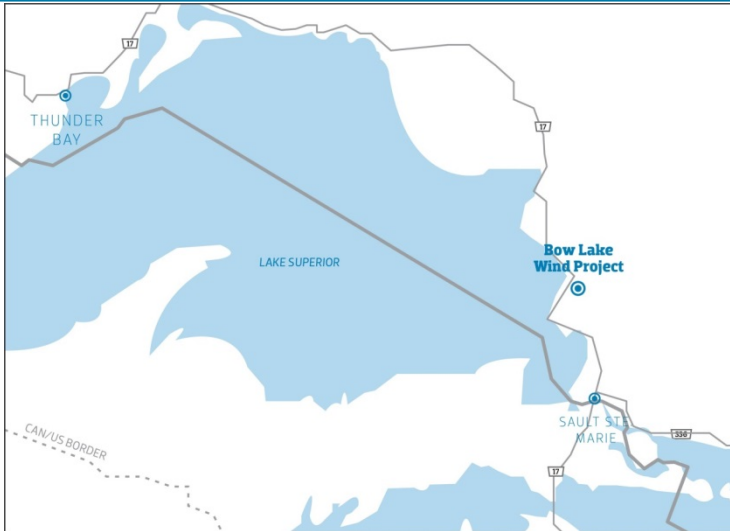


Project Schedule



| Details | Schedule |
|----------------------------------------------------|-------------------------------------------------|
| Construction Surveying & Site Preparation | January 2014 – April 2014 |
| Access Road Construction & Foundation Installation | May 2014 – May 2015 |
| Wind Turbine Installation | October 2014 – July 2015 |
| Commercial Operation | Phase 1 – June 2015 Phase 2 - September 2015 |

Bow Lake Project Location



Construction Activities



- Phase 1 turbine installation complete
- Phase 1 roads and collector system complete
- Testing and commissioning of Phase 1 anticipated in Early June
- Phase 2 Road construction nearing completion
- Foundation work well underway
- Phase 2B tower installation started in mid May.

Project Activities



Foundation Construction



Foundation Construction



Turbine Transport



Phase 1 Turbine Install



Phase 1 Turbines





Road Safety

- Project specific construction roads are closed to the public until Project is completed
- Public multi-use roads on Crown Lands are open to the public - please use with caution
- Large construction, snow clearing equipment and logging trucks on the Crown Land public roads
 - MacKay Road, Hogg Dam Road, Rebecca's Road, Trim Lake Road and Mile 67 Road
- Monitoring employee and contractor driving behaviour – follow posted speed limits
- Vehicles and ATVs should be driven on public roads with caution around project workers and equipment





Phase 1 Operations



- Phase 1 commercial operations anticipated to commence in June
- Operations staff hired and in place, one site supervisor and 4 wind turbine technicians.
- Operations and Maintenance building to be constructed onsite near transformer station
- Consultants retained to start post construction monitoring program
- Restoration and reclamation activities started on Phase 1 roads and construction area

Community Investment

Community Investment Update

- Lake Superior Provincial Park Interpretive Programming and educational support. First meetings held with LSPP.
- Montreal River Harbour rest stop with interpretive boards
 - Consideration for parking area for recreational users of crown land
 - Consider feasibility for washrooms for highway travellers
 - Evaluating potential locations and feasibility
- Tourism enhancement – guided or self guided tours (i.e. road/trail maps and interpretive guide for ATV, Snowmobile, cross country skiing)



Contacts



1-844-214-2578

bowlakewind@bluearth.ca

Bryan Tripp 519-821-7319

EMERGENCY

Michael Kristiansen

MasTec Renewables Construction

888-272-4205

michael.kristiansen@mastec.com

Questions?

