

Bow Lake Wind Project



Community Liaison Committee
November 26, 2014

Project Update



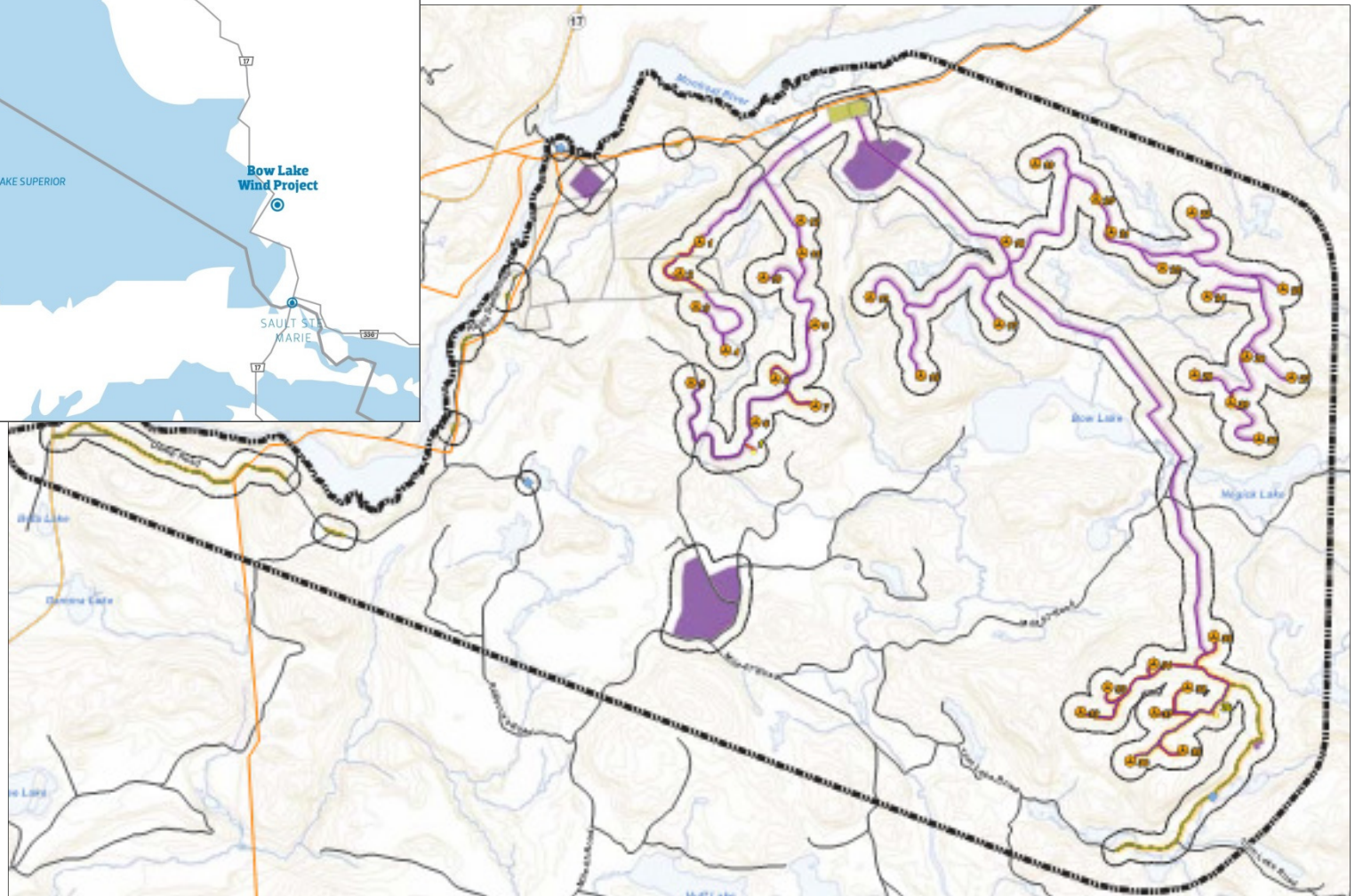
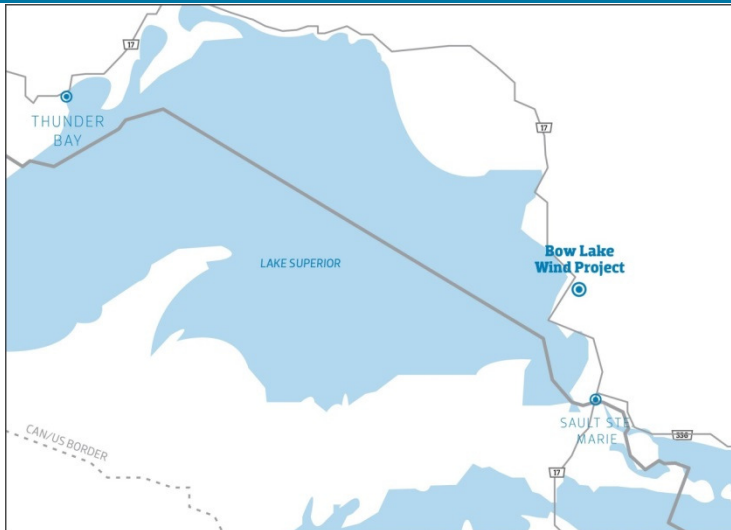
- Project construction update
- Schedule
- Road safety
- Hunting restriction
- Community investment

Project Schedule



Details	Schedule
Construction Surveying & Site Preparation	January 2014 – April 2014
Access Road Construction & Foundation Installation	May 2014 – May 2015
Wind Turbine Installation	October 2014 – July 2015
Commercial Operation	Phase 1 - January 2015 Phase 2 - September 2015

Bow Lake Project Location



Construction Activities



- Road entrance off of Hwy 17N
- Building access roads
- Turbine foundations
- Collection system installation
- Electrical transformer installation
- Turbine installation

Project Activities



- Road entrance off of Hwy 17N and access road construction



Foundation Construction



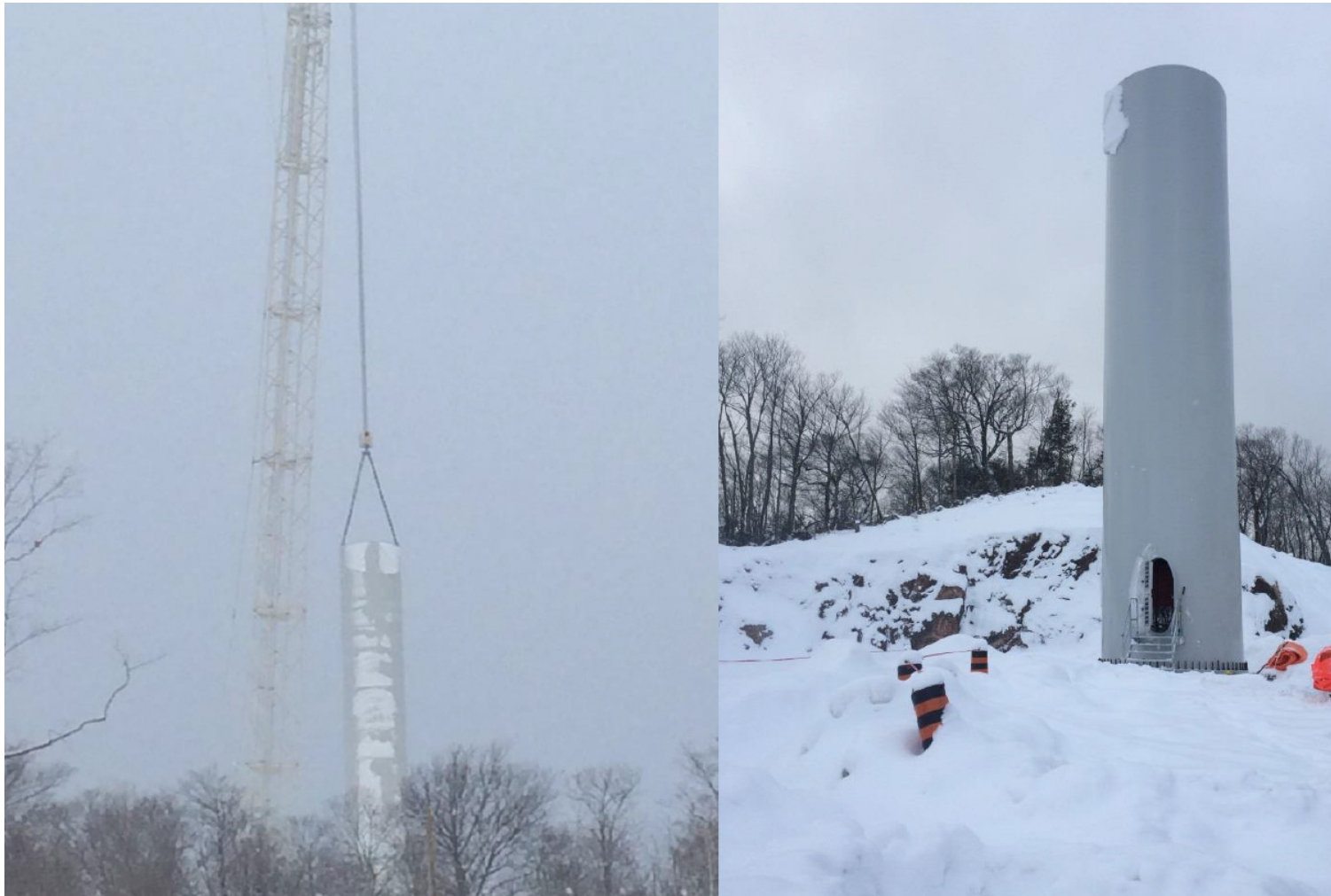
Turbine Transport



Nacelles & Transformers



Turbine Install started



Road Safety



- Project specific construction roads are closed to the public
- Public multi-use roads on Crown Lands are open to the public - please use with caution
- Large construction, snow clearing equipment and logging trucks on the Crown Land public roads
 - MacKay Road, Hogg Dam Road, Rebecca's Road, Trim Lake Road and Mile 67 Road
- Monitoring employee and contractor driving behaviour – follow posted speed limits
- Vehicles and ATVs should be driven on public roads with caution around project workers and equipment
- Blasting
 - Follow all signs posted
 - Stay out of designated blast areas
 - Be aware of audible warnings



Safety – Hunting



- To ensure the mutual safety of hunters and site workers, a temporary hunting restriction has been enacted by MNR in the vicinity of Project construction areas.
- The Project worked with MNR and incorporated feedback from local Crown Land users to refine and minimize the hunting restriction area.
- Hunting prohibited from September 15 to December 31, 2014 in the areas adjacent to the Project
- Hunting restrictions will not be required during operations of the facility.

**The safety of public users of
Crown land and Project
workers is top priority.**

Community Investment



Community Investment Ideas from first CLC meeting

- Lake Superior Provincial Park Interpretive Programming and educational support.
- Montreal River Harbour rest stop with interpretive boards
 - Consideration for parking area for recreational users of crown land
 - Consider feasibility for washrooms for highway travellers
- Tourism enhancement – guided or self guided tours (i.e. road/trail maps and interpretive guide for ATV, Snowmobile, cross country skiing)
- Group of Seven tourism enhancement – Algoma tour train, sponsorship of Group of Seven box car replica.

We're seeking out ideas for community investment opportunities.



Contacts



1-844-214-2578

bowlakewind@bluearth.ca

Bryan Tripp 519-821-7319

EMERGENCY

Michael Kristiansen

MasTec Renewables Construction

888-272-4205

michael.kristiansen@mastec.com

Questions?

