

Bow Lake Wind Project



Community Liaison Committee
July 23, 2014

Project Update

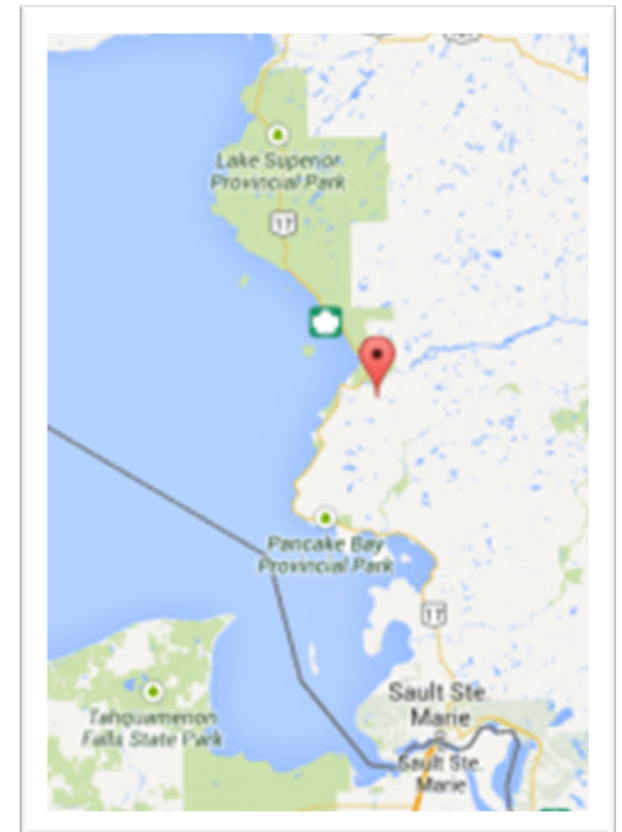


-
- Bow Lake Wind Project overview
 - Wind power overview
 - Construction
 - Schedule
 - Project status update
 - Safety (road safety, hunting)
 - Community investment intro

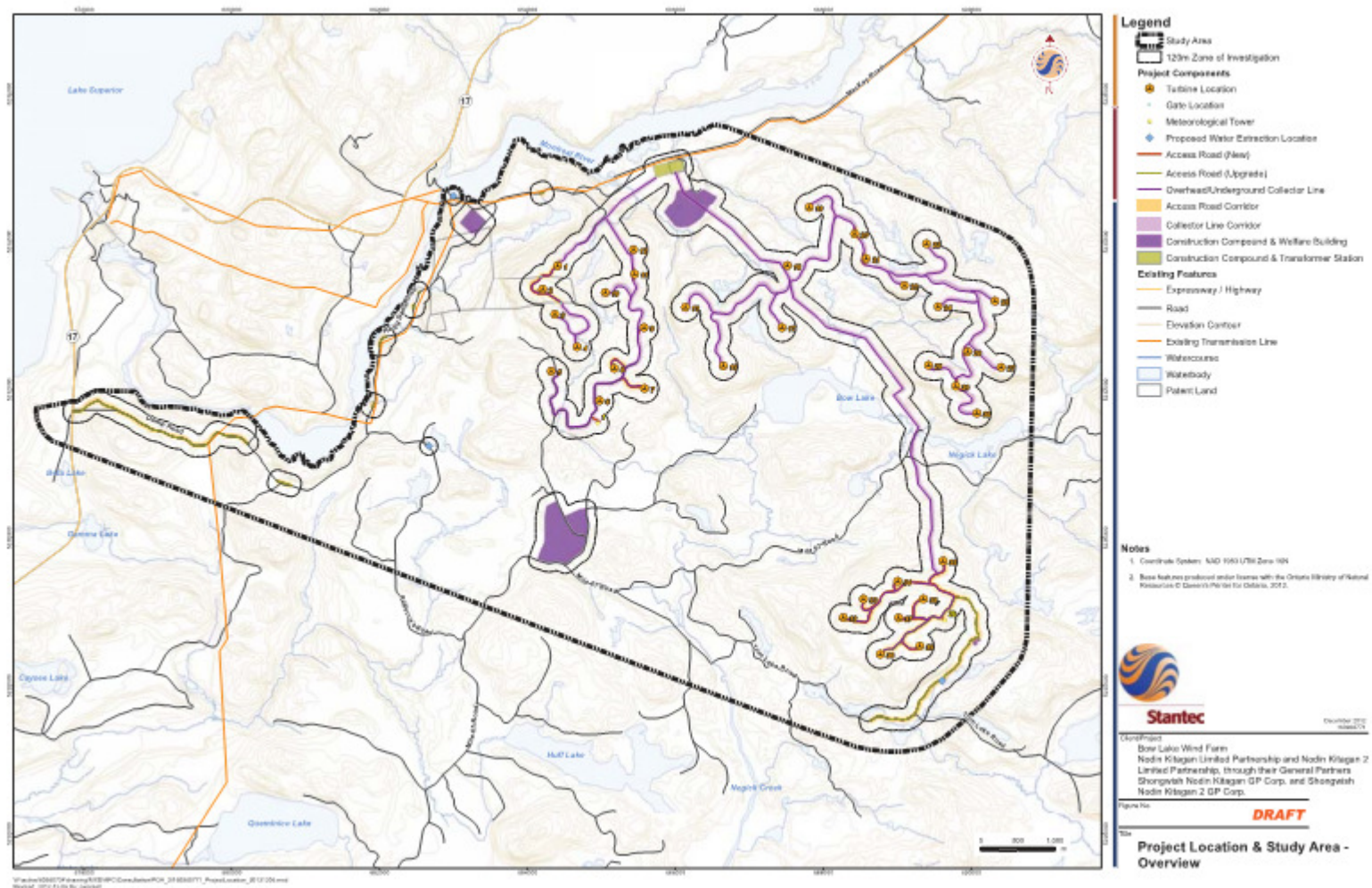
Bow Lake Wind Project



- Mostly on Crown Land approx. 80 km northwest of Sault Ste. Marie
- Capacity to generate about 60 MW renewable electricity
- 36 - 1.6 MW wind turbines
- Partnership between Batchewana First Nation and BluEarth
- One of the largest economic partnership between a First Nation and a wind energy developer in Canada



Bow Lake Wind Project: Site Plan



About BluEarth



- Renewable power developer & operator
 - Focused on commercial-scale solar, wind and hydro development in Canada
- Canada's most experienced and successful renewable energy team
- Privately-owned
 - 48% ARC Financial
 - 45% Ontario Teachers Pension Plan
 - 7% Management, friends & family





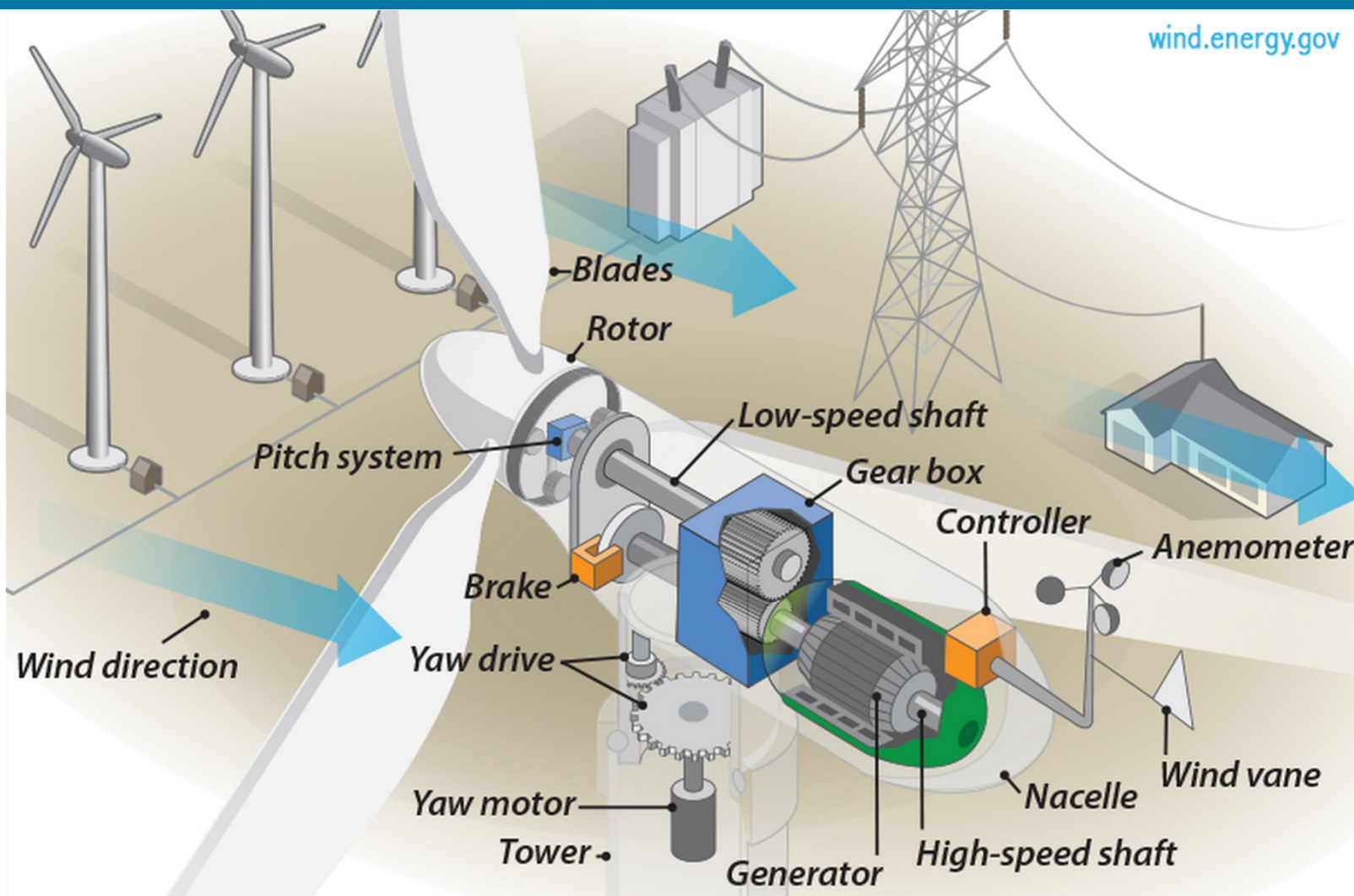
Batchewana First Nation



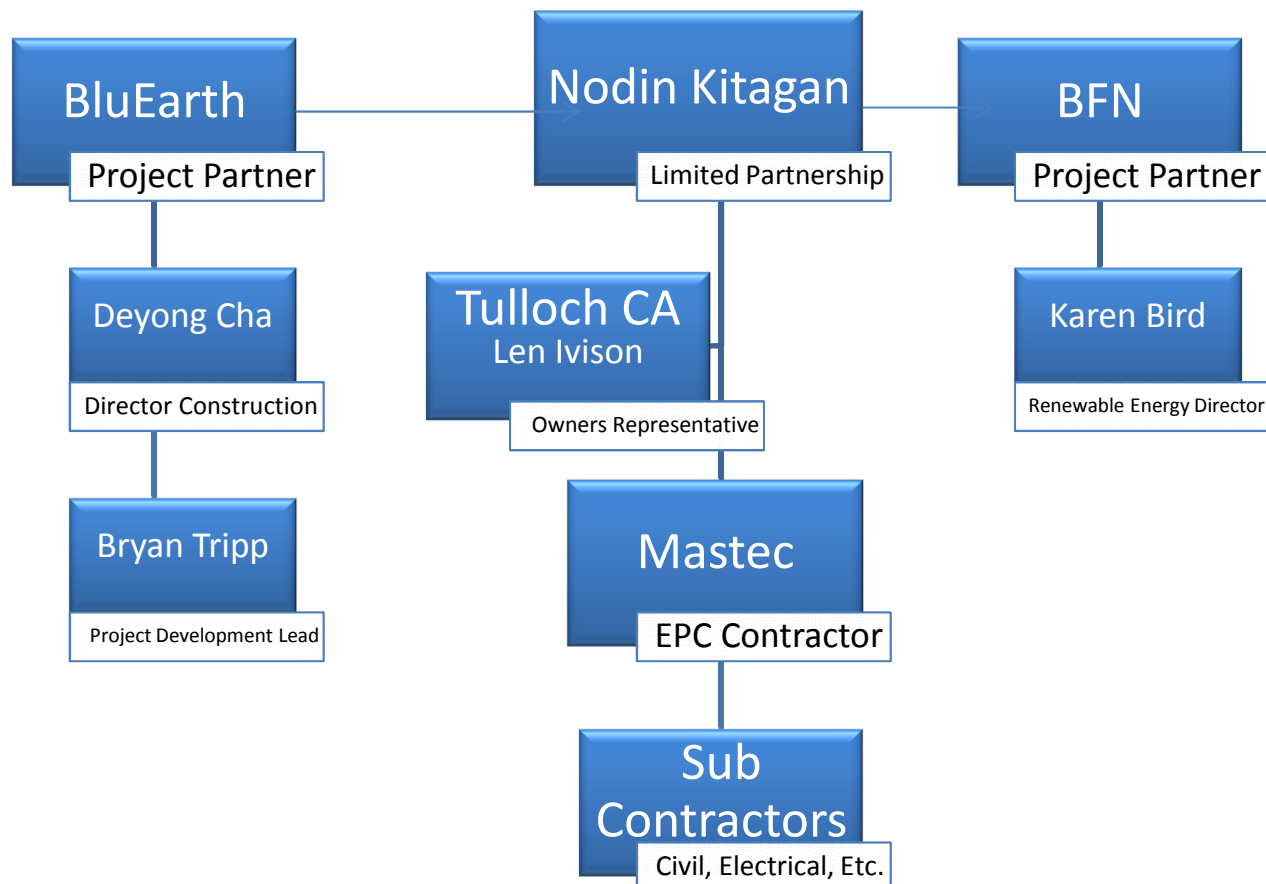
- Supports the development of the Project and as a government has issued a permit for use of land within its traditional territory
- An economic partner through equity participation in NKLP and will be active participants in the development, construction and operation of the Project
- Batchewana Natural Resources conducted traditional knowledge assessments, environmental assessments, wildlife & wetland evaluations
- There will be significant local benefits to the BFN:
 - Stable long term source of revenue to support social, educational and housing programs
 - Direct employment and contracting opportunities
 - Direct involvement in construction and operations
 - Education and training opportunity

Wind Power Overview

wind.energy.gov



Project Team



Project Schedule



Details	Schedule
Construction Surveying and Site Preparation	January 2014 – April 2014
Access Road Construction and Foundation Installation	May 2014 – October 2014
Wind Turbine Installation	October 2014 – July 2015
Commercial Operation	Phase 1 January 2015 Phase 2 September 2015

Project Update



- Site preparation activities continue
 - Sorting timber
 - Road construction
 - Preparation of Foundation sites
- Environmental protection measures
 - Erosion control matting
 - seeding
 - Silt fencing



Construction Activities



- Road entrance off of Hwy 17N
- Building access roads
- Turbine foundations
- Collection system installation
- Electrical transformer installation
- Turbine installation
- Site reclamation





Safety – Traffic & Road



- Large construction equipment and logging trucks on the Crown Land public roads
 - MacKay Road, Hogg Dam Road, Rebecca's Road, Trim Lake Road and Mile 67 Road
- Monitoring employee and contractor driving behaviour – follow posted speed limits
- Vehicles and ATVs should be driven with caution around project workers and equipment
- Blasting
 - Follow all signs posted
 - Stay out of designated blast areas
 - Be aware of audible warnings



Safety – Hunting



- Hunters should be cautious and follow standard hunting safety practices and Ontario hunting regulations
 - Stay a safe distance from the construction area
 - Be aware that there are people on site at all times, so consider their safety

Regional Investment and Employment



- Expected job creation during construction, operations, and decommissioning.
 - 80 FTE during Construction
 - 6-7 direct FTE during Operations
- Local investment during entire Project lifecycle including the procurement of supplies, materials, contracting services and specialized services
- Upgrades and maintenance of public multi-use roads for recreational users
- Creation of electricity through the use of a renewable resource
- Economic Partnership with Batchewana First Nation

Community Investment



- Support of non-profit activities and events by providing financial assistance, product or in-kind contributions throughout our project areas in Canada
- Employees donate their time and energy into programs that build our team and strengthen the communities where we work

We're seeking out ideas for community investment opportunities.



Contacts



1-844-214-2578

bowlakewind@bluearth.ca

Bryan Tripp 519-821-7319

EMERGENCY

Shane Corbett, Construction Manager

MasTec Renewables Construction

705-256-0129

shane.corbett@mastec.com

Questions?

