

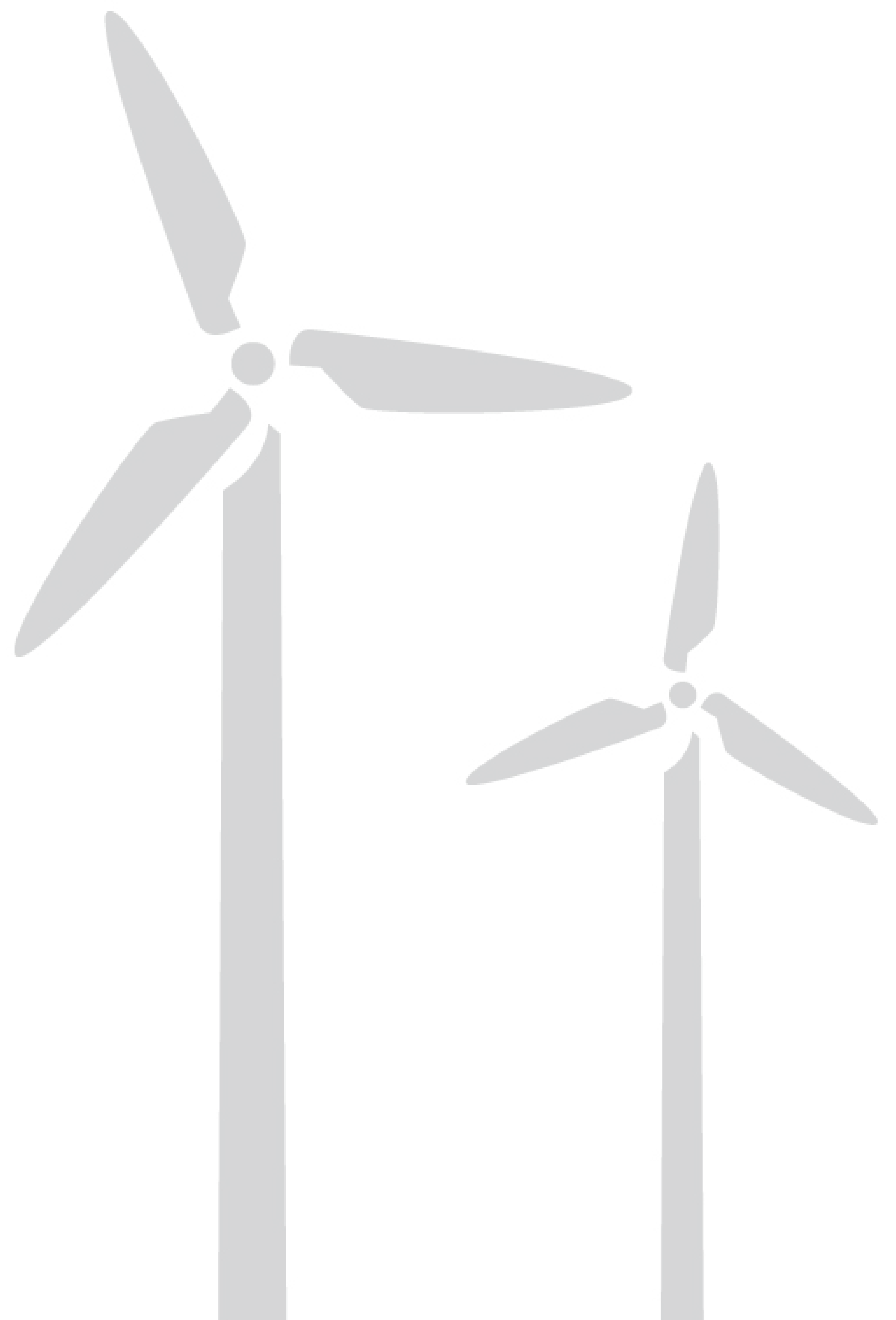
Community Meeting

Please sign in at the front desk and provide your contact information if you would like to receive project updates.

We invite you to walk around and look at the displays.

If you have questions or comments, please ask one of our representatives.

Thank you for attending!



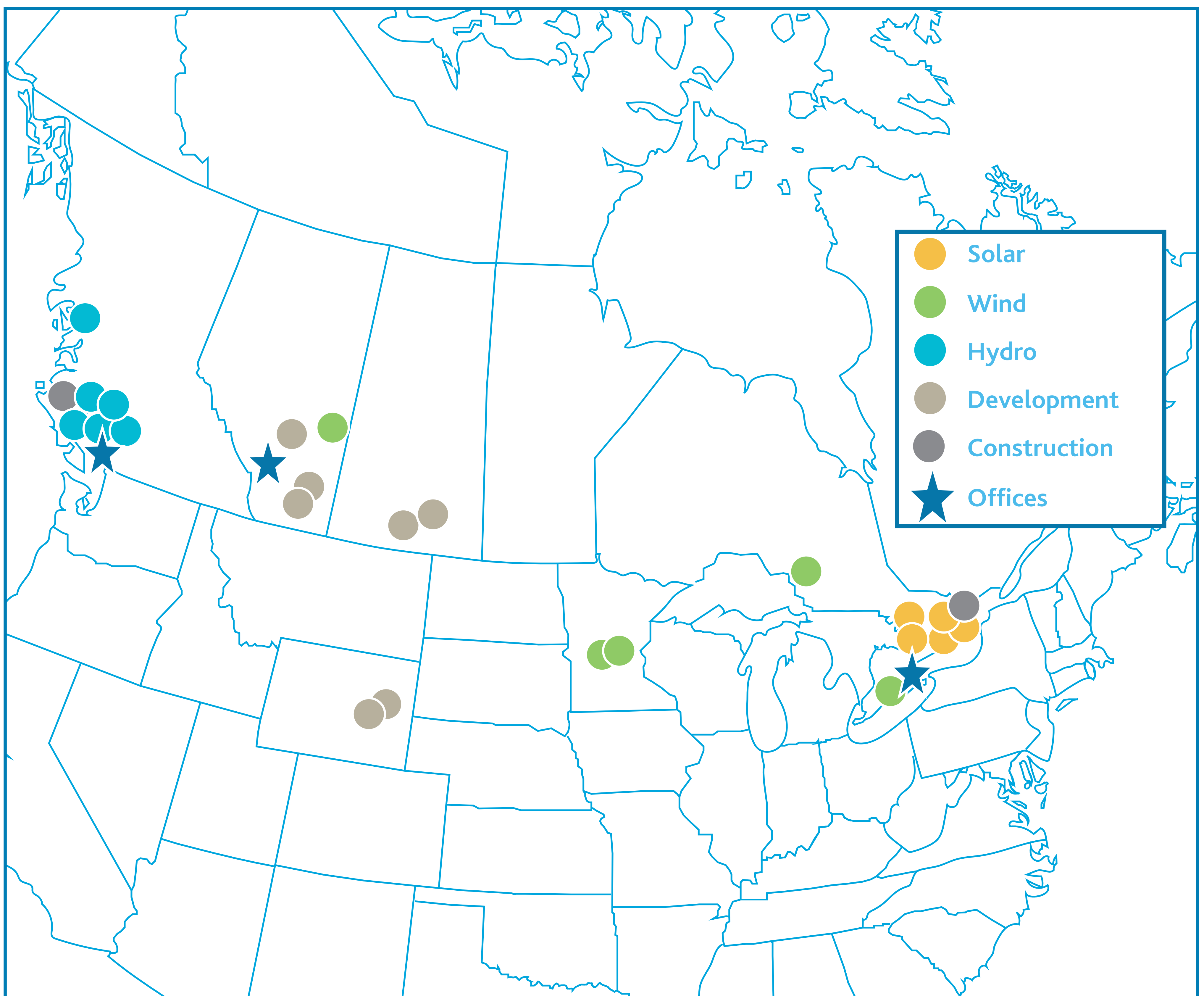
BluEarth Renewables

BluEarth Renewables US LLC is the US affiliate of BluEarth Renewables LP.

BluEarth Renewables brings together extraordinary people with the power to change the future™ by delivering renewable energy to the power grid every day. We are a leading, power producer that develops, builds, owns and operates wind, hydro and solar facilities across North America. Our portfolio includes 325 MW net (565 MW gross) of nameplate capacity in operation and under construction and over 1,000 MW under development.

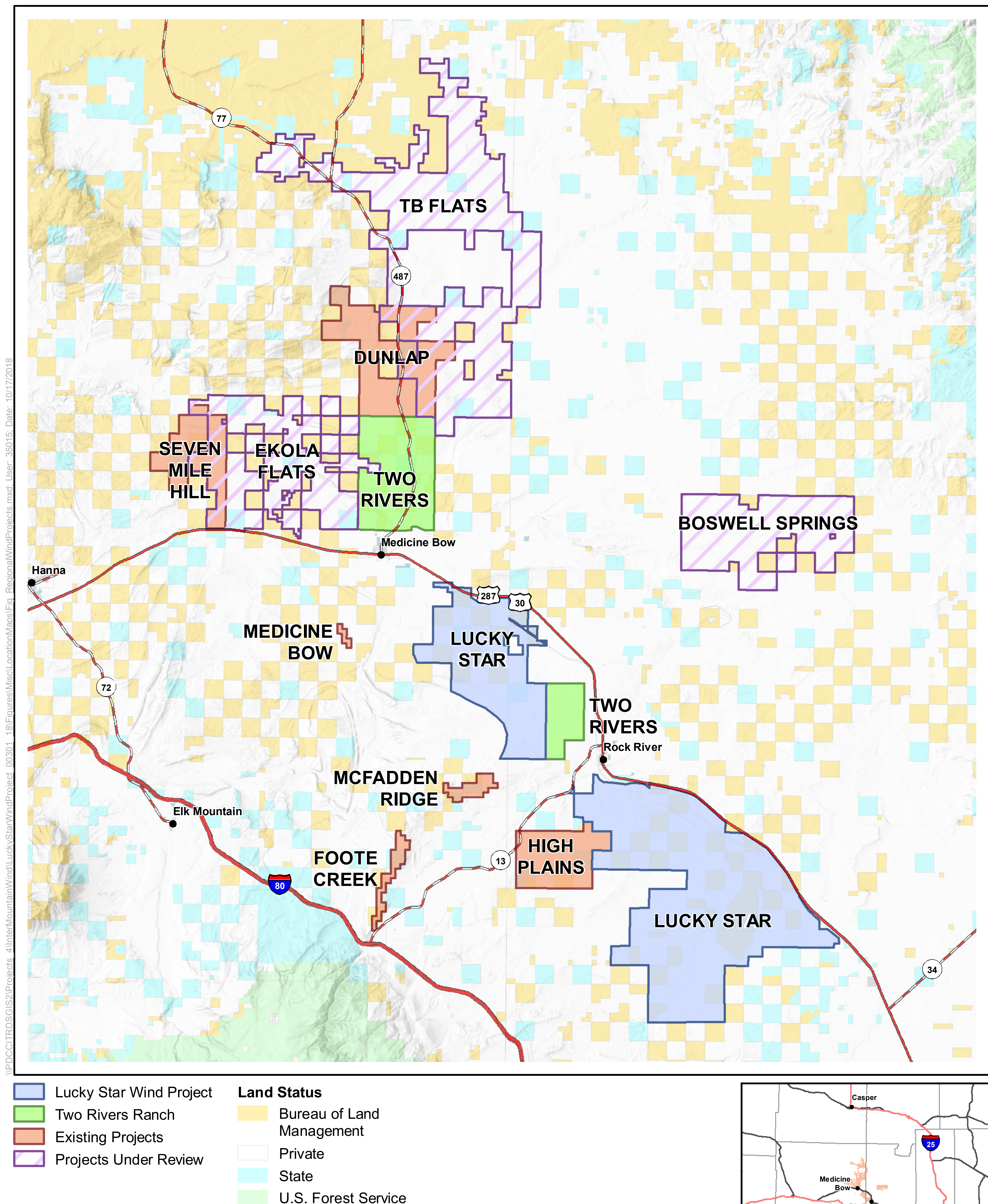
For more information, visit bluearthrenewables.com

Our Portfolio



Regional Overview

An overview of existing and proposed wind energy projects in the region.



Source: Albany County 2018, Carbon County 2018.

Project Description

We are planning to submit local and state permit applications required to construct and operate the Lucky Star Wind Project across two private ranches in Carbon and Albany Counties, Wyoming. Permits required for the project include Conditional Use Permits from the counties as well as an Industrial Siting Council (ISC) Permit from the Wyoming Department of Environmental Quality.

Project Details	
Location	South of Highway 30 and Medicine Bow
Point of Interconnection	Aeolus substation
Project Area	78,000 acres
Expected Capacity	500 MW
Preliminary Site Plan	Up to 100 wind turbines on Medicine Bow River Ranch and up to 200 wind turbines on Lookout Ranch

*Estimated



Project Description

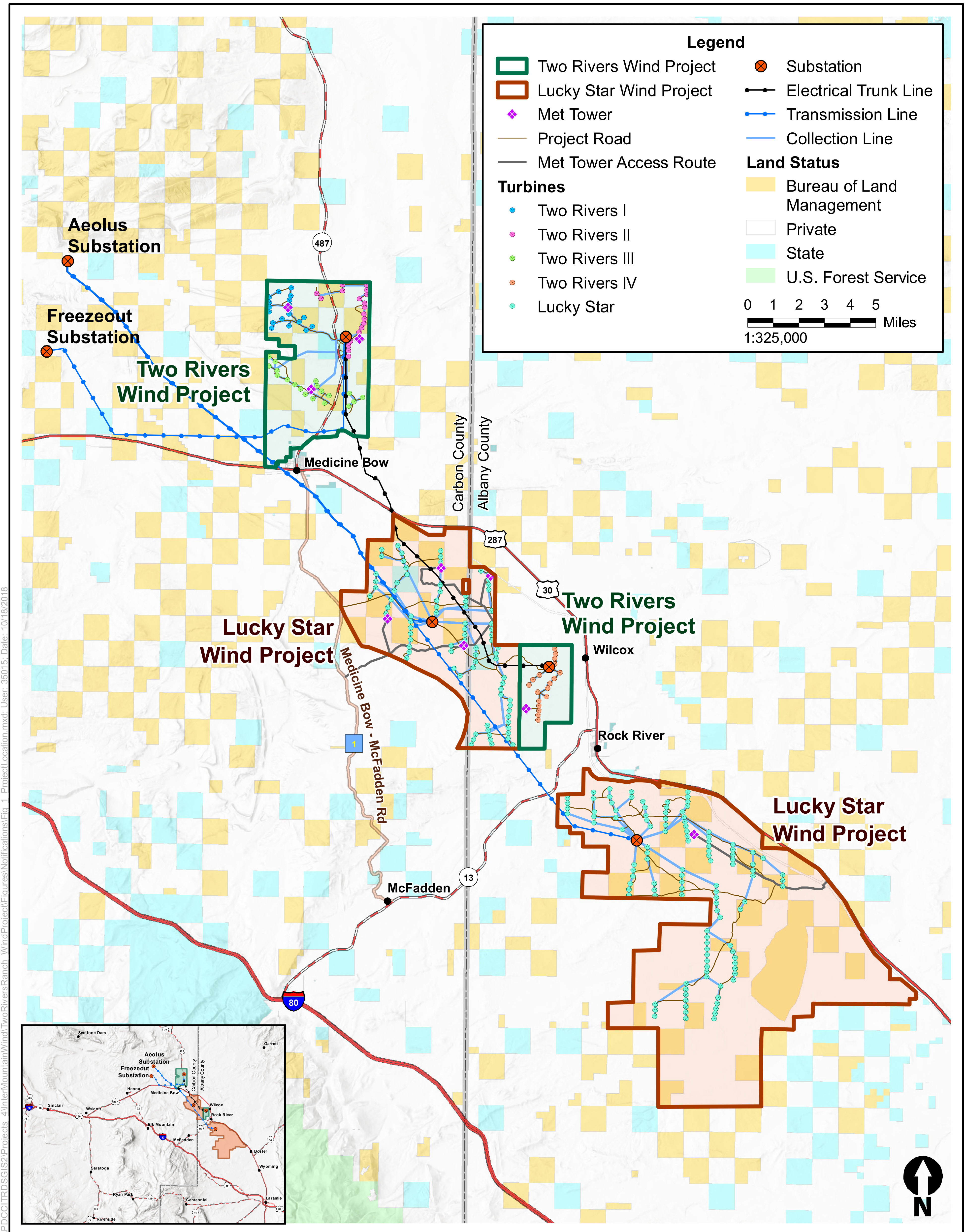
We are planning to submit local and state permit applications required to construct and operate the Two Rivers Wind Project across two private ranches in Carbon and Albany Counties, Wyoming. Permits required for the project include Conditional Use Permits from the counties as well as an Industrial Siting Council (ISC) Permit from the Wyoming Department of Environmental Quality.

Project Details	
Location	North of Highway 30 and Medicine Bow
Point of Interconnection	Freezeout substation
Project Area	19,500 acres
Expected Capacity	280 MW
Preliminary Site Plan	Up to 80 wind turbines on Two Rivers Ranch and up to 20 wind turbines on Medicine Bow River Ranch

*Estimated



Project Plans

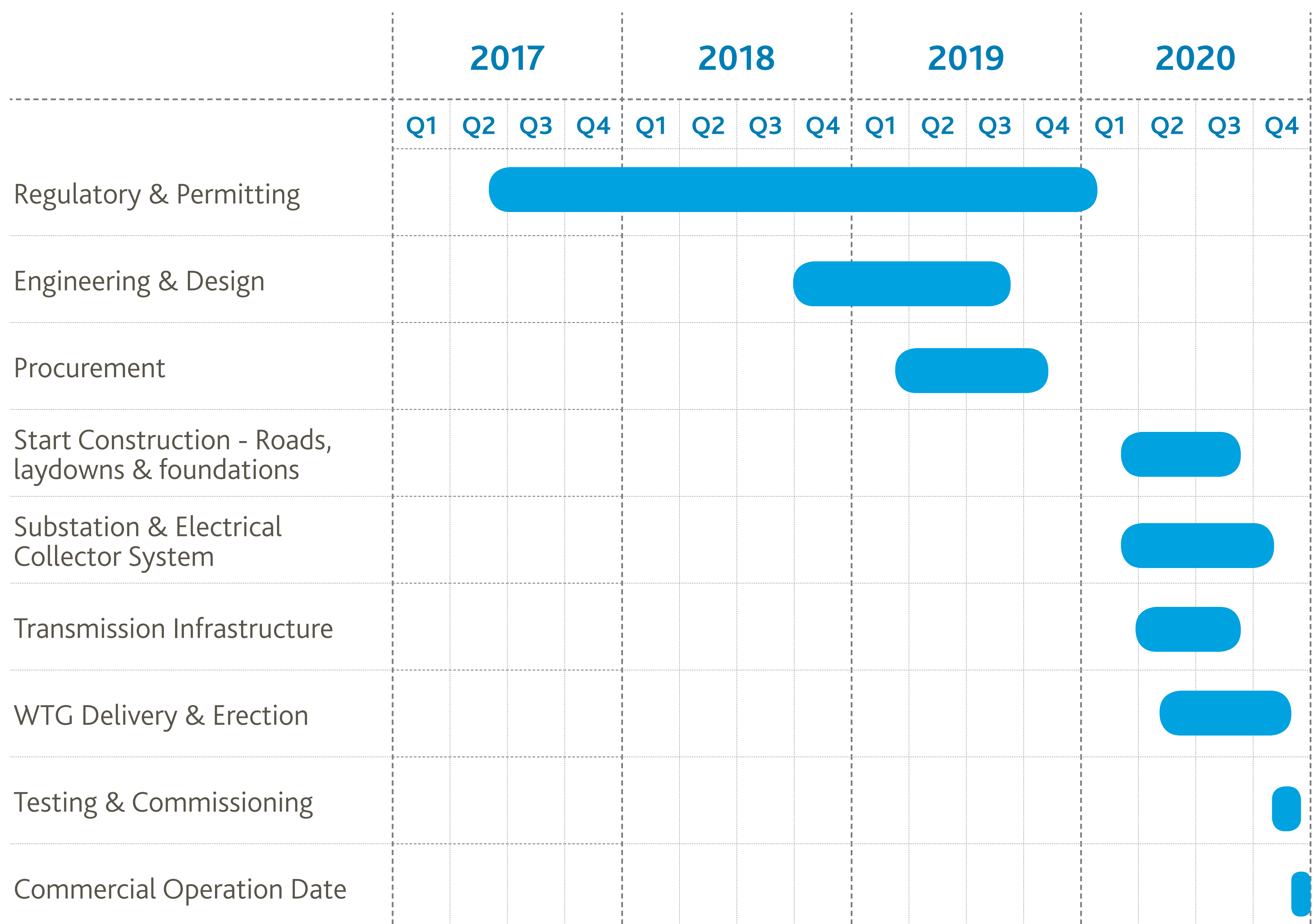


Two Rivers Wind Project



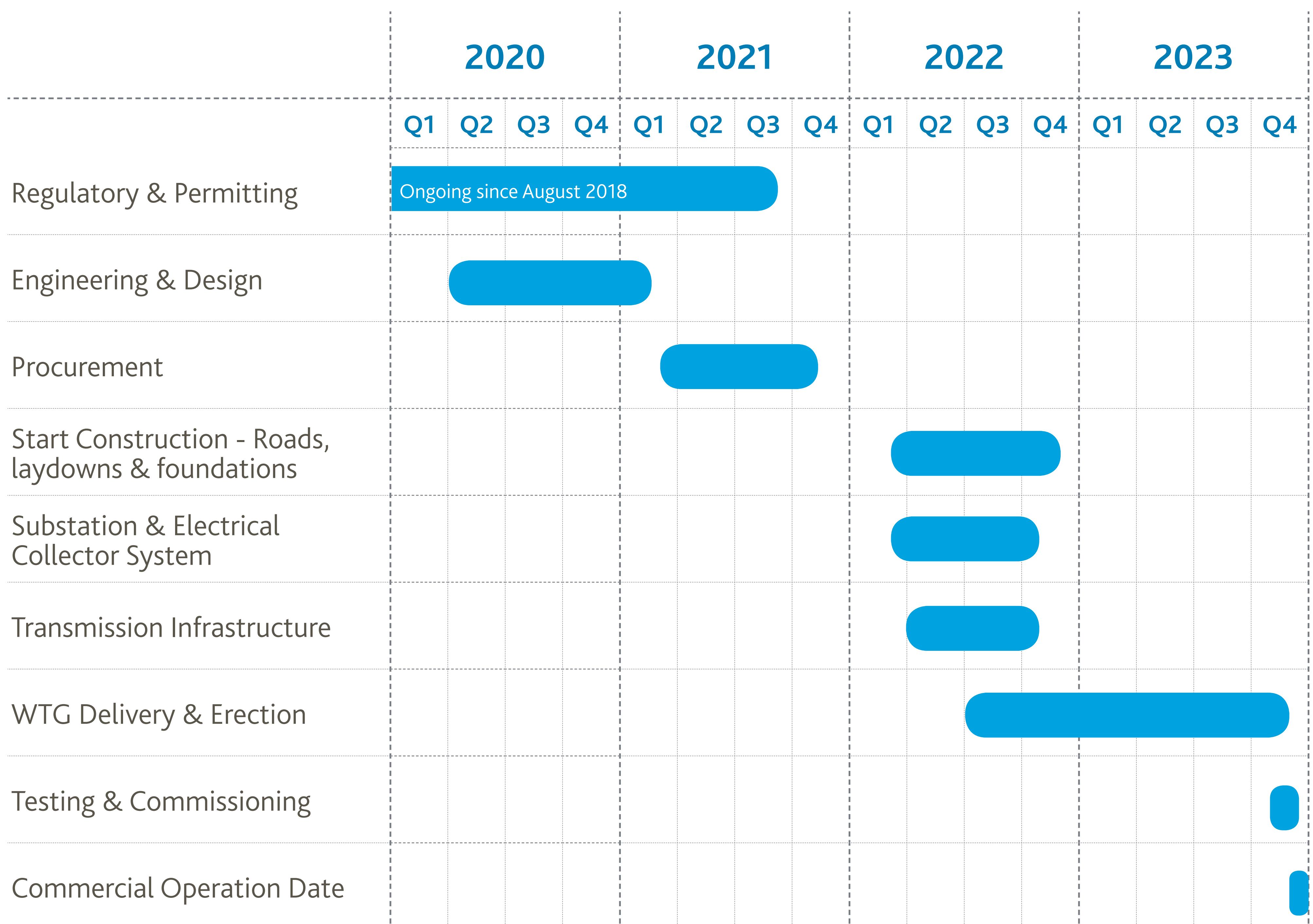
Construction Schedule

We anticipate that construction would begin on Two Rivers I, II and III, followed by phase IV. Construction would begin with road improvements, road construction, and geotechnical investigations and would be followed by construction of foundations, the electric collection systems, and installation of wind turbine generators. The preliminary site plan consists of two substations, electrical collector systems and roads, and a 230-345 kv transmission line to the point of interconnection.



Construction Schedule

Construction would begin with road improvements, road construction, and geotechnical investigations and would be followed by construction of foundations, the electric collection systems, and installation of wind turbine generators. The preliminary site plan consists of two substations, electrical collector systems and roads, and a 230 kv transmission line to the point of interconnection.



Community Benefits

The Lucky Star and Two Rivers wind projects will bring benefits to the local community through additional long-term tax revenue, employment during construction and operations, and boosts to the local economy with the procurements of goods and services.

	Two Rivers	Lucky Star
Fiscal Benefits & Tax Revenue		
Cost of Construction	\$364 million	\$650 million
Material Cost	\$262 million	\$468 million
Local & State Sales Taxes	\$15 million	\$27 million
Lifetime Property Tax	\$30 million	\$48 million
Wind Energy Production Tax	\$30 million over 30-year project life	\$60 million over 30-year project life
Employment Benefits		
Construction Employment	Up to 170	Up to 250
Average Monthly Wage (Construction)	\$3,800 / worker	\$3,800 / worker
Operations Employment	Up to 10	Up to 14
Average Monthly Wage (Operations)	\$3,360 / worker	\$3,360 / worker



Permits & Coordination

We are actively coordinating with local, state, and federal authorities to minimize any disturbance to the environment that may come as a result of construction and operation of the Projects, to obtain the appropriate environmental permits, and to develop species-specific survey and conservation plans, as necessary.

Some of the following items are required, and some are voluntary commitments worked on in coordination with federal, state, and local authorities:

- Wyoming Department of Environmental Quality, Industrial Siting Council Section 109 Permit
- Carbon and Albany County Conditional Use Permits for a Wind Energy Conversion System
- County Road Use Agreements
- Eagle Conservation Plan and Eagle Take Permit from U.S. Fish and Wildlife Service
- Bird and Bat Conservation Strategy
- Monitoring Plan for Wyoming Game and Fish Department
- US Army Corps of Engineers Clean Water Act Section 404 Permit
- Pre-Construction Permits (e.g. Wyoming Department of Environmental Quality Large Construction General Permit)



Environmental Studies

Pre-construction wildlife surveys are being conducted consistent with the U.S. Fish and Wildlife Service Land-based Wind Energy Guidelines. We are coordinating extensively with state and federal environmental agencies to gather all necessary baseline data to permit the project. Meetings with the Wyoming Game and Fish Department and U.S. Fish and Wildlife Service have been initiated to determine the level of baseline survey information needed and coordination will continue.

The following environmental studies have been completed, are currently underway, or are planned to be completed for the Projects:

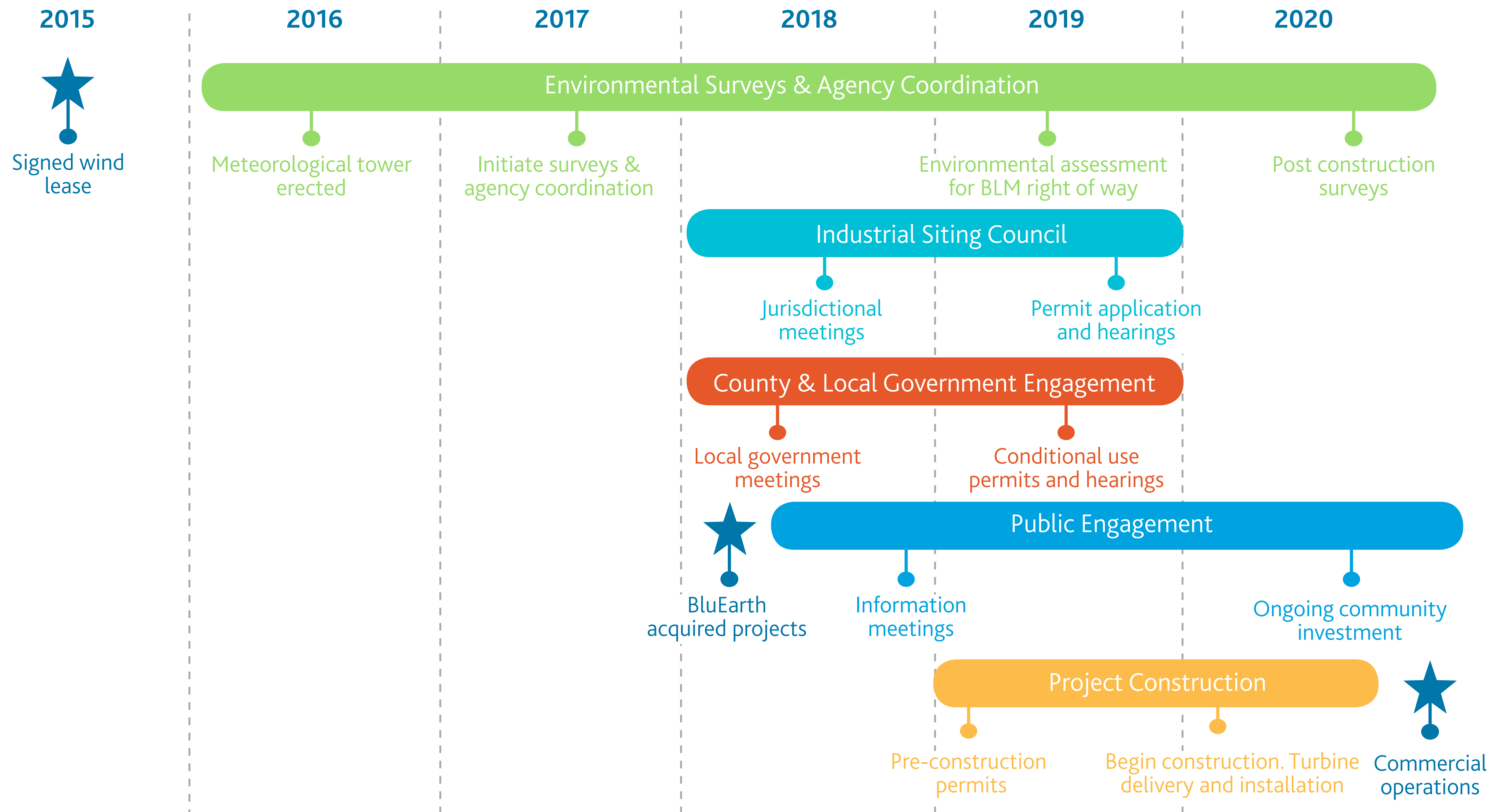
- Site Characterization – anticipated completion Nov. 2018
- Avian Use/Eagle Point Count Surveys– ongoing through summer 2020
- Raptor Nest Surveys – ongoing through summer 2020
- Eagle Activity/Flight Path – ongoing through summer 2020
- Sage Grouse Lek Surveys – ongoing through spring 2020
- Bat Acoustic Monitoring – anticipated completion 2020
- White Tailed Prairie Dog Colony Mapping – anticipated completion summer 2019
- Big Game Fixed Routes – anticipated completion summer 2020
- Wetland/Waters of the U.S. Delineations – desktop review initiated, anticipated completion 2019
- Ecological Site Description Mapping –anticipated completion 2018
- Cultural Resource Surveys – anticipated completion 2019
- Erosion Potential Assessment – anticipated completion 2018
- Sensitive Wildlife Species surveys – planned for 2019



Two Rivers Wind Project



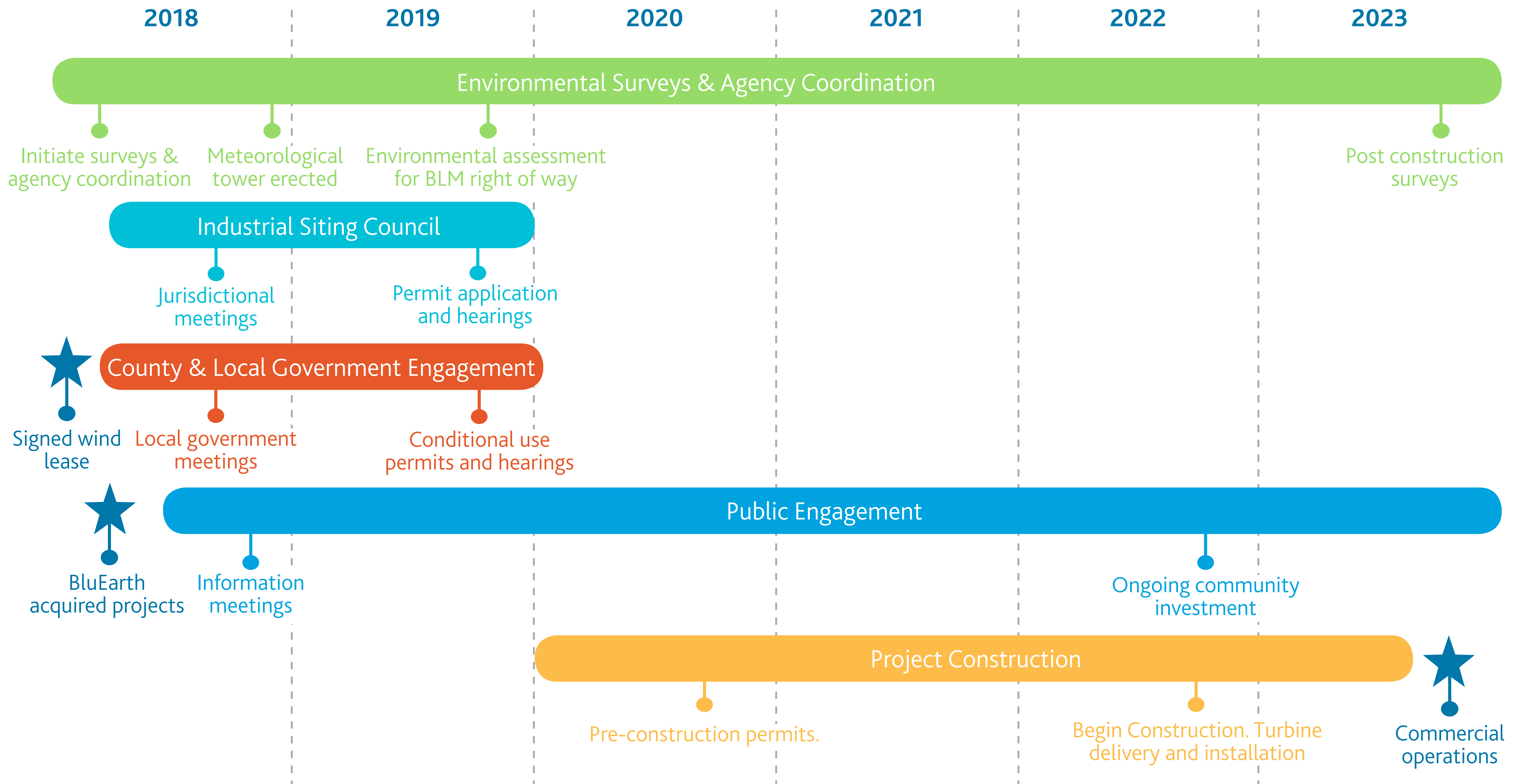
Project Timeline



Lucky Star Wind Project



Project Timeline





Thank you for attending!

Please fill out a comment form and provide your feedback on the two proposed projects.

If you would like to receive updates, please provide us with your name and contact information.

bluearthrenewables.com/tworivers

bluearthrenewables.com/luckystar

projects@bluearth.ca

1.844.214.2578



BlueEarthTM
RENEWABLES • US